

GENERAL
<div>1. THIS SET OF DOCUMENTS DESCRIBES THE TECHNOLOGY SCOPE OF WORK FOR THE CONSTRUCTION PROJECT.</div> <div>2. THERE ARE MULTIPLE INSTALLERS WITH WORK THAT CAN BE DESCRIBED IN THESE DOCUMENTS:</div> <div>AVC: AUDIOVISUAL CONTRACTOR EC: ELECTRICAL CONTRACTOR GC: GENERAL CONTRACTOR LVC: LOW VOLTAGE CONTRACTOR SC: SECURITY CONTRACTOR</div> <div>3. ALL WORK REQUIRED TO ELECTRICALLY COMPLETE AND FUNCTIONAL SYSTEM IS REQUIRED INCLUDING BUT NOT LIMITED TO:<ul style="list-style-type: none">FINAL DESIGNFURNISH MATERIALSPERMITTESTINGTRAININGWARRANTY & SUPPORT</div>
STANDARD REFERENCES
ALL WORK MUST ABIDE BY ALL APPLICABLE SECTIONS OF THE MOST CURRENT VERSION OF THE FOLLOWING: <div>ADA: AMERICANS WITH DISABILITIES ACT AHJ: LOCAL AUTHORITY HAVING JURISDICTION INCLUDING LOCAL LAWS AND LABOR REGULATIONS AIA: AMERICAN INSTITUTE OF ARCHITECTS ANSI: AMERICAN NATIONAL STANDARDS INSTITUTE ASIS: ASIS INTERNATIONAL AVIXA: AUDIOVISUAL AND INTEGRATED EXPERIENCE ASSOCIATION BISCI: BUILDING INDUSTRY CONSULTING SERVICES INTERNATIONAL CEC: CHICAGO ELECTRICAL CODE EIA: ELECTRONIC INDUSTRIES ALLIANCE FCC: FEDERAL COMMUNICATIONS COMMISSION IBC: INTERNATIONAL BUILDING CODE IEEE: INSTITUTE OF ELECTRICAL AND ELECTRONICS ENGINEERS ISO: INTERNATIONAL ORGANIZATION FOR STANDARDIZATION NEC: NATIONAL ELECTRICAL CODE OSHA: OCCUPATIONAL HEALTH AND SAFETY ASSOCIATION TIA: TELECOMMUNICATIONS INDUSTRY ALLIANCE</div>
FOR ANY INSTANCE THAT MULTIPLE ORGANIZATIONS PROVIDE DIRECTION ON A SPECIFIC SCOPE, THE STRICTEST GUIDELINE SHALL BE FOLLOWED.
QUALITY ASSURANCE & QUALIFICATION
<div>1. CAREFULLY EXAMINE THE DRAWINGS, SPECIFICATIONS, VISIT THE SITE AND BECOME FAMILIAR WITH THE LOCAL CONDITIONS RELATING TO THE WORK.</div> <div>2. DISCOVERY OF ANY CONFLICTING DESIGN INFORMATION OR ANY DESIGN INTENTIONS WHICH ARE NOT READILY INTERPRETTED SHALL BE REFERRED TO THE ENGINEER FOR FURTHER DESCRIPTION OR ILLUSTRATION PRIOR TO ANY PRODUCT SELECTION OR EXECUTION OF WORK.</div> <div>3. DISCOVERY OF ANY MATERIALS OR EQUIPMENT WHICH ARE DAMAGED, UNSUITABLE, INCOMPATIBLE, OR NON-COMPLIANT WITH APPLICABLE CODES, LAWS, ORDINANCES, OR REGULATIONS SHALL BE BROUGHT TO THE DIRECT ATTENTION OF THE ENGINEER.</div> <div>4. MANUFACTURER: COMPANY SPECIALIZING IN THE MANUFACTURING OF THE PRODUCTS SPECIFIED IN THIS SECTION WITH A MINIMUM OF SEVEN YEARS OF DOCUMENTED EXPERIENCE, ISO 9001 OR EQUAL CERTIFICATION, AND WITH FACILITIES WITHIN 100 MILES OF THE PROJECT LOCATION.</div> <div>5. SUPPLIER: AUTHORIZED DISTRIBUTOR OF SPECIFIED MANUFACTURER WITH A MINIMUM OF TEN YEARS DOCUMENTED EXPERIENCE WITH LOCAL STOCK FOR SERVICE AND MAINTENANCE OF SPECIFIED COMPONENTS.</div> <div>6. INSTALLER: COMPANY SPECIALIZED IN THE INSTALLATION OF THE PRODUCTS SPECIFIED WITH A MINIMUM OF FIVE YEARS OF DOCUMENTED EXPERIENCE AND THREE PROJECTS OF SIMILAR SIZE AND SCOPE WITHIN THE PAST 24-MONTHS.</div> <div>7. SERVICES: AUTHORIZED FACTORY-TRAINED FULL TIME STAFFED SERVICE DEPARTMENT WITH A MINIMUM OF FIVE YEARS OF DOCUMENTED EXPERIENCE SPECIALIZING IN THE SERVICING OF THE PRODUCTS SPECIFIED WITH SERVICE FACILITIES WITHIN 50 MILES OF THE PROJECT.</div> <div>8. CERTIFIED DEALERS: THE PRIME CONTRACTOR MUST BE CERTIFIED BY THE MANUFACTURER TO FURNISH, INSTALL, AND SERVICE ALL SPECIFIED PRODUCTS.</div> <div>9. INSURANCE: MUST BE INSURED TO THE REQUIREMENTS SET AT THE GREATEST EXTENT OF THE BUILDING OWNER, LANDLORD, GENERAL CONTRACTOR OR CLIENT.</div> <div>10. CERTIFIED PRACTITIONERS: AT LEAST ONE FULL TIME STAFF MEMBER ASSIGNED TO THE PROJECT TEAM BY THE CERTIFYING AUTHORITY REPRESENTATIVE OF THE DISCIPLINE OF WORK BEING PREFORMED: STRUCTURED CABLING: BISCI RCDD AV DESIGN: AVIXA CTS-I AV INSTALLATION: AVIXA PPSR OR CPP (PLUS LOCAL LICENSE REQUIREMENTS) SECURITY: ASIS PSR OR CPP (PLUS LOCAL LICENSE REQUIREMENTS)</div>
SUBMITTAL REQUIREMENTS
<div>PROPOSAL<div>1. WRITTEN PROPOSAL: NARRATIVE SCOPE OF WORK</div><div>2. EQUIPMENT LIST: MANUFACTURERS, MODELS, QUANTITIES</div><div>3. PRICING BREAKDOWN: LABOR, MATERIALS, TAX, PERMIT FOR EACH SYSTEM</div><div>4. UNIT PRICING: TYPICAL LOCATION FOR EACH STANDARD SYMBOL ON THE DRAWING INCLUDING EQUIPMENT, CABLING, AND INSTALLATION LABOR.</div><div>5. PRODUCT CUT SHEETS: FOR ALL SUBSTITUTED PRODUCTS</div><div>6. CERTIFICATIONS: PROVIDE COPIES OF MANUFACTURER CERTIFICATIONS FOR ALL PRODUCTS PROPOSED WITHIN THE PROJECT SCOPE.</div><div>7. EXTENDED WARRANTY: PRICING FOR EXTENDING THE FULL WARRANTY PERIOD FROM 12 MONTHS TO 60 MONTHS ON AN ANNUAL BASIS WITH RECOMMENDED PREVENTATIVE MAINTENANCE VISITS INCLUDED.</div><div>8. INSURANCE: CERTIFICATE PROVIDED WITH THE PROJECT NAMED.</div><div>9. REFERENCES: PROVIDED WITH CONTACT NAME, PHONE NUMBER AND EMAIL FOR THREE PROJECTS OF SIMILAR SIZE AND SCOPE COMPLETED WITHIN THE PAST THREE YEARS</div><div>10. PROJECT TEAM: ORGANIZATIONAL CHART WITH APPLICABLE CERTIFICATIONS FOR ALL TEAM MEMBERS TO BE ASSIGNED TO THE PROJECT.</div></div> <div>PROJECT KICKOFF<div>1. MOCK-UP SUBMITTAL: OF PHYSICAL SAMPLES FOR CLIENT APPROVAL, WITH FACELATE COLORS AND LABELS, JACK COLORS, AND CABLE COLORS AND LABELS.</div><div>2. PRODUCT DATA: FOR ALL PRODUCTS, EQUIPMENT, CABLING, AND MATERIALS PROPOSED TO BE INSTALLED ON THE PROJECT. ALL BE APPROVED PRIOR TO ORDERING.</div><div>3. SHOP DRAWINGS: SUBMITTAL CONTAINING DIMENSIONED INSTALLATION DRAWINGS FOR ALL COMPONENTS WITH INTERCONNECTION DETAILS AND REQUIRED SEQUENCE OF OPERATIONS.</div><div>4. SEISMIC QUALIFICATION CERTIFICATES: AS REQUIRED BY LOCAL JURISDICTION.</div></div> <div>PROJECT CLOSE OUT<div>15. TEST REPORTS: INDICATING SATISFACTORY COMPLETION OF TESTS AND INSPECTIONS REQUIRED BY THIS SPECIFICATION AND THE STANDARDS REFERENCED HEREIN.</div><div>16. MANUFACTURER'S INSTRUCTIONS: INDICATING APPLICATION CONDITIONS AND LIMITATIONS OF THE USE STIPULATED BY PRODUCT TESTING AGENCY SPECIFIED UNDER REGULATORY REQUIREMENTS, INCLUDE INSTRUCTIONS FOR STORAGE, HANDLING, PROTECTION, EXAMINATION, PREPARATION, AND INSTALLATION OF PRODUCT.</div><div>17. RECORD DOCUMENTS: OF ACTUAL LOCATIONS OF EQUIPMENT, DEVICES, AND INTERCONNECTING WIRING WITH FIELD IDENTIFYING LABELS. PROVIDE ONE LAMINATED COPY TO BE HUNG AT EACH HEAD END (MDR/IDF) LOCATION.</div><div>18. LETTER OF WARRANTY: WITH CONTACT INFORMATION FOR SERVICE AND SUPPORT.</div><div>19. EXTENDED WARRANTY: OF MANUFACTURER'S EXTENDED WARRANTY OF PRODUCTS.</div><div>20. MAINTENANCE DATA: INCLUDING INSTRUCTIONS FOR SAFE OPERATING PROCEDURES, REPLACEMENT PARTS, AND TROUBLESHOOTING DIAGNOSTICS.</div><div>21. USER GUIDE: CUSTOM DOCUMENT LAMINATED WITH STEP-BY-STEP INSTRUCTIONS FOR ALL CUSTOMIZED PROGRAMS, SOFTWARE, INTERFACES, SYSTEMS.</div></div>
WARRANTY & SERVICE
<div>1. UPON SUBSTANTIAL COMPLETION OF THE PROJECT, A FULL 12-MONTH LABOR, WORKMANSHIP, AND MATERIAL WARRANTY SHALL APPLY TO ALL NEW COMPONENTS.</div> <div>2. THE CABLING SYSTEM SHALL BE WARRANTED LABOR AND MATERIALS FOR NO LESS THAN 15-YEARS BY THE MANUFACTURER.</div> <div>3. DURING THE 12-MONTH WARRANTY PERIOD, THE INSTALLER SHALL REPLACE DEFECTIVE OR MALFUNCTIONING ITEMS SUBJECTED TO NORMAL USE AT NO COST TO THE OWNER WITHIN A 24-HOUR PERIOD.</div> <div>4. WITHIN THE PERIOD 30-60 DAYS AFTER THE TURNOVER OF THE PROJECT, THE INSTALLER SHALL VISIT THE SITE TO VERIFY ALL COMPONENTS ARE SATISFACTORY TO THE CLIENT AND ALL SYSTEMS ARE PERFORMING AS DESIGNED. AT THIS TIME, SERVICE PACKS AND FIRMWARE SHALL BE UPDATED WHILE ADDITIONAL TRAINING PROVIDED.</div> <div>5. SLA: SERVICE LEVEL AGREEMENT MUST BE PROVIDED BY THE INSTALLER FOR THE WARRANTY PERIOD: WORKING HOURS (M-F 8AM - 5PM) LIVE PERSON TELEPHONE RESPONSE WITHIN 1-HOUR ON-SITE SUPPORT WITHIN 4-HOURS NON-WORKING HOUR (M-F 6PM - 8AM AND WEEKENDS) LIVE PERSON TELEPHONE RESPONSE WITHIN 4-HOURS ON-SITE SUPPORT NEXT BUSINESS DAY</div>

PROJECT MANAGEMENT, SCHEDULE & COORDINATION
<div>1. THE INSTALLER SHALL PROVIDE A SINGLE POINT OF CONTACT FOR THE PROJECT TEAM FOR COORDINATION OF SCHEDULE AND INTERDISCIPLINARY ITEMS. THE DATES FOR COMPLETION OF, ROUGH-IN, CABLING, TERMINATIONS, TESTING, PROGRAMMING, COMMISSIONING, THE PROJECT SCHEDULE MUST BE COMPLETED IN A FORMAT THAT CAN BE IMPORTED INTO THE MASTER PROJECT SCHEDULE.</div> <div>2. CONTINUITY OF ALL SERVICE WILL BE MAINTAINED IN ALL AREAS THAT WILL BE OCCUPIED OR TEMPORARILY RELOCATED DURING THE PROJECT.</div> <div>3. ANY SERVICE INTERRUPTION MUST BE SCHEDULED WITH AT LEAST SEVEN DAYS OF NOTICE TO THE PROJECT MANAGER.</div> <div>4. INCLUDE PREMIUM TIME FOR ANY WORK REQUIRED TO COMPLY WITH THE PROJECT SCHEDULE.</div> <div>5. FIELD LOCATIONS: VERIFY LOCATIONS OF OUTLETS, CLOSETS, EQUIPMENT ROOMS, RACEWAYS, ETC. PRIOR TO ROUGH-IN.</div> <div>6. THE INSTALLER SHALL COORDINATE WITH THE OWNER, PROJECT MANAGER AND/OR GENERAL CONTRACTOR ON THE SEQUENCING OF THE TRADES REQUIRED WITHIN THESE DOCUMENTS, SUPPORTING THESE, AND REQUIRED BY THESE FOR THE ENTIRE LIFECYCLE OF THE PROJECT.</div> <div>7. COOPERATION AND COORDINATION IS REQUIRED WITH ALL TRADES:<div>a. THE WORK WILL BE PERFORMED SO THAT THE PROGRESS OF THE ENTIRE PROJECT WILL NOT BE DELAYED OR INTERFERED WITH.</div><div>b. KEEP FULLY INFORMED AS TO THE SHAPE, SIZE, AND POSITION OF ALL OPENINGS REQUIRED FOR ALL APPARATUS AND GIVE INFORMATION IN ADVANCE TO BUILDING OPENINGS INTO THE SPACE.</div><div>c. FURNISH AND SET IN PLACE ALL SLEEVES, POCKETS, SUPPORTS, AND INCIDENTALS.</div><div>d. COORDINATE EXACT LOCATIONS AND ROUGH-IN DIMENSIONS OF ALL WORK BEFORE INSTALLATION AND MAKE ALL FINAL CONNECTIONS AS REQUIRED.</div><div>e. ATTEND PROJECT COORDINATION MEETINGS TO COORDINATE WORK OF THIS SECTION, PATHWAYS, AND WORK OF OTHER TRADES PHASING AND PROJECT REQUIREMENTS.</div></div>

PROJECT CONDITIONS
<div>1. ENVIRONMENTAL CONSIDERATIONS SHALL BE MADE DURING EVERY PHASE OF THE PROJECT. THIS INCLUDES RECYCLING AND LIMITING OF WASTE ON THE PROJECT. REFER TO LEAD PROJECT MANAGER IS ADDITIONAL REQUIREMENTS EXIST FOR THIS PROJECT.</div> <div>2. EXISTING CONDITIONS MUST BE REVIEWED PRIOR TO COMMENCING WORK. REFER TO SEPARATE SECTIONS AND NOTES WITHIN THE SPECIFICATIONS AND DRAWINGS FOR SPECIAL REQUIREMENTS OF EXISTING LOCATIONS, MATERIALS, AND EQUIPMENT.</div> <div>3. FIELD MEASUREMENTS MUST BE CONFIRMED BY THE INSTALLER. ALL DRAWING BACKGROUNDS AND MODEL S ARE ISSUED TO SCALE AS RECEIVED BY OTHERS. INCORRECT TAKEOFF MEASUREMENTS ARE THE RESPONSIBILITY OF THE INSTALLER.</div> <div>4. ALL FINISHED WORK BY OTHER TRADES OR EXISTING CONDITIONS MUST BE PROTECTED FROM DAMAGE. THE INSTALLER IS LIABLE FOR ANY COSTS TO REPAIR OR REPLACE DAMAGE CAUSED.</div>

TECHNOLOGY CABLING RACEWAY NOTES
<div>1. PROVIDE RACEWAY, BOXES, AND GROUNDING FOR COMMUNICATIONS SYSTEMS INCLUDING TELECOMMUNICATIONS, SECURITY, AUDIOVISUAL, AND OTHER TECHNOLOGY DEVICES. VERIFY REQUIREMENTS WITH TECHNOLOGY CONSULTANTS AND CONTRACTORS.</div> <div>2. TECHNOLOGY RACEWAY SHALL ADHERE TO THE FOLLOWING GENERAL CRITERIA:<div>a. HORIZONTAL CONDUIT DISTANCE BETWEEN BOXES SHALL NOT EXCEED 100 FEET</div><div>b. TOTAL NUMBER OF CONDUIT BENDS SHALL NOT EXCEED TWO EQUIVALENT 90 DEGREE BENDS BETWEEN BOXES</div><div>c. BRANCH CONDUIT SIZE SHALL BE BASED ON THE QUANTITY OF CABLES ROUTED TO EACH LOCATION</div><div>d. CONFIRM ACTUAL CABLE TYPE AND PHYSICAL SIZE PRIOR TO CONDUIT INSTALLATION</div><div>e. FINAL CONDUIT LAYOUT SHALL BE PROVIDED BY THE ELECTRICAL CONTRACTOR BASED UPON THIS INFORMATION.</div><div>f. ALL CONDUITS SHALL INCLUDE PULL STRINGS WITH LENGTH MARKING.</div><div>g. ALL CONDUIT OF UDS SHALL INCLUDE INSULATING BUSHINGS.</div><div>h. CONDUIT FROM UDS SHALL BE BOXED IN.</div><div>i. CONDUITS SHALL BE SIZED TO A MAXIMUM FILL OF 31% BASED UPON THE FOLLOWING CHART OR SIMILAR CALCULATION BASED UPON THE EXACT CABLING TO BE INSTALLED.</div></div>

PRODUCTS
<div>1. CONDITION: ALL PRODUCTS SHALL BE NEW UNLESS SPECIFICALLY CALLED OUT OTHERWISE.</div> <div>2. ACCESS & CUSTOMIZATION: ALL PRODUCTS SHALL BE STANDARD OFF THE SHELF PRODUCTS READILY AVAILABLE.</div> <div>3. EQUIPMENT SCHEDULES: MAJOR COMPONENTS ARE INCLUDED IN THE EQUIPMENT SCHEDULES. THE INSTALLER IS REQUIRED TO PROVIDE ANY ADDITIONAL COMPONENTS NECESSARY TO PROVIDE A FULLY FUNCTIONAL SYSTEM.</div> <div>4. ALTERNATES: ALL COMPONENTS REFERENCE A SPECIFIC MANUFACTURER AND MODEL NUMBER OR SERIES. ANY INSTALLER DESIRED ALTERNATES MAY BE ACCEPTED IF PROOF OF THE EQUIVALENT SPECIFICATION IS PROVIDED AND WRITTEN OWNER APPROVAL OBTAINED.</div> <div>5. EXTRA MATERIAL: SUBMIT EXTRA MATERIALS UNDER PROVISIONS OF DIVISION 01 AND/OR AS NOTED IN THE EQUIPMENT LISTS.</div>

LABELING & ADMINISTRATION
<div>1. CABLE, EQUIPMENT, AND ROOM IDENTIFICATIONS SHALL MEET THE REQUIREMENTS OF THE TIA/EIA-606, THE ADMINISTRATION STANDARD FOR THE TELECOMMUNICATIONS INFRASTRUCTURE.</div> <div>2. PROVIDE TELECOMMUNICATIONS CABLING IDENTIFICATION AND IDENTIFIED IN THE DRAWINGS.</div>

EXAMINATION, PREPARATION, & DEMOLITION
<div>EXAMINATION<div>1. VERIFY THAT THE INTERIOR OF THE BUILDING HAS BEEN PROTECTED FROM THE WEATHER.</div><div>2. VERIFY THAT THE CABLE TRAY SYSTEM AND CONDUIT RACEWAY SYSTEM IS COMPLETE AND SUPPORTED.</div><div>3. VERIFY THAT CONDUIT STUBS ARE INSTALLED WITH BUSHINGS.</div></div> <div>PREPARATION<div>COMPLETELY AND THOROUGHLY SWAP RACEWAY PRIOR TO PULLING CABLE.</div><div>2. PREPARE ALL ROOMS, FLOORS, WALLS, AND FURNITURE TO ENSURE THE CONDITION IS SUITABLE FOR THE INSTALLATION OF NEW COMPONENTS.</div></div> <div>ALTERATIONS & DEMOLITION<div>1. REFER TO DRAWINGS FOR ALTERATIONS AND DEMOLITION REQUIRED.</div><div>2. REFER TO DRAWINGS FOR EQUIPMENT REUSE.</div></div>

FIRE STOPPING
<div>1. PENETRATIONS THROUGH FIRE RATED BUILDINGS STRUCTURES, WALLS, AND FLOORS SHALL BE SEALED WITH AN APPROPRIATE FIRESTOP SYSTEM. THIS REQUIREMENT APPLIES TO THROUGH PENETRATIONS AND MEMBRANE PENETRATIONS. ANY PENETRATING ITEMS SHALL BE PROPERLY FIRE STOPPED.</div> <div>2. FIRESTOP SYSTEMS SHALL BE UL CLASSIFIED TO ASTM E814 (UL 1479) AND APPROVED BY THE LOCAL AUTHORITY HAVING JURISDICTION.</div> <div>3. FIRESTOP SYSTEMS SHALL BE INSTALLED IN ACCORDANCE WITH THE MANUFACTURER'S RECOMMENDATIONS AND SHALL BE COMPLETELY INSTALLED AND AVAILABLE FOR INSPECTION BY THE LOCAL INSPECTION AUTHORITIES PRIOR TO CABLE SYSTEM ACCEPTANCE.</div>

TESTING
<div>1. ALL PROVIDED SCOPE SHALL BE TESTED AND REPORTED WITH AH CERTIFICATION FROM THE INSTALLER AND THE DATE AND TIME THE TESTING TOOK PLACE.</div> <div>2. ALL ACTIVE COMPONENTS SHALL BE TESTED BASED UPON THE DESIGNED CRITERIA FOR THE SYSTEM AND A PASS/FAIL TEST FOR ALL FEATURES SHALL BE PROVIDED.</div> <div>3. ALL SYSTEMS SHALL BE FULLY COMMISSIONED BY THE INSTALLER. FOLLO THE AVIXA STANDARD ROOM COMMISSIONING FORM FOR EACH SPACE WITH AV.</div> <div>4. ALL CABLING SHALL BE TESTED TO THE DOCUMENTED CRITERIA OF THE CABLING BY THE MANUFACTURER. THE CABLING SHALL BE TESTED BY A DEVICE CALIBRATED WITHIN THE PAST 12-MONTHS, FLUXE DSO OR EQUAL. AN ELECTRONIC COPY OF THE FULL REPORT SHALL BE PROVIDED WITH ALL PERMANENT LINKS SHOWING PASS: UTP CABLING: LENGTH, NEAR END CROSS-TALK, ATTENUATION, AMBIENT NOISE, AND ATTENUATION TO CROSS-TALK. FIBER CABLING: MAXIMUM FIBER LOSS, MINIMUM BANDWIDTH, MAXIMUM ATTENUATION, POWER METER TEST, AND OTDR TRACES. COAXIAL CABLING: CONTINUITY, ATTENUATION, AND AMBIENT NOISE. SWEEP TEST REQUIRED FOR ALL ANTENNA LOCATIONS. OTHER CABLING: CONTINUITY</div>

TECHNOLOGY CONTRACTOR NOTES
<div>1. WHERE CABLE TRAY IS PRESENT AND EXPOSED THEY WILL NEED TO BE PAINTED TO MATCH OPEN SPACE COLOR.</div> <div>2. WHERE CABLE TRAY IS NOT PRESENT, CONTRACTOR IS TO ROUTE CABLING ON J-HOOKS SPACE A MAXIMUM OF 48" O.C. CONTRACTOR IS TO PROVIDE AND INSTALL ALL J-HOOKS.</div> <div>3. WITH THE EXCEPTION OF OUTLETS TERMINATING ABOVE CEILING, CONTRACTOR SHALL PROVIDE 12" OF SLACK CABLE ABOVE CEILING AT DATA OUTLET LOCATION. THE DATES FOR COMPLETION OF, ROUGH-IN, CABLING, TERMINATIONS, TESTING, PROGRAMMING, COMMISSIONING, THE PROJECT SCHEDULE MUST BE COMPLETED IN A FORMAT THAT CAN BE IMPORTED INTO THE MASTER PROJECT SCHEDULE.</div> <div>4. FOR OUTLETS TERMINATING ABOVE CEILING, CONTRACTOR SHALL PROVIDE 30" OF SLACK CABLE ABOVE CEILING AT DATA OUTLET LOCATION. THE CABLE PROVIDED SHALL BE OF A SINGLE OR NON-CONCENTRIC LOOPS. ALL OUTLETS SHALL BE SURFACED MOUNTED BOXES MOUNTED TO THREADED ROD. DO NOT MOUNT TO ACT CEILING SUPPORT CABLES OR REST ON CEILING TILE.</div> <div>5. NOTICE TO THE CONTRACTOR: THE ADDITIONAL EZ-PATH SLEEVES NOT SHOWN ON PLANS TO MAINTAIN WALL RATINGS.</div> <div>6. CONTRACTOR SHALL PROVIDE 1" CONDUIT SLEEVED ABOVE CEILING THROUGH FIRE, SMOKE, OR SOUND BARRIER WALLS WHEN CABLE NEEDS TO ROUTE BETWEEN A CORRIDOR AND AN OFFICE OR OTHER SINGLE USE SPACES.</div>

CABLING REQUIREMENTS
<div>1. INSTALL CABLE IN PATHWAYS</div> <div>2. UTP CABLE LENGTH SHALL BE INSTALLED WITH NO LENGTH EXCEEDING 275-FEET.</div> <div>3. ARRANGE CABLE TO MAINTAIN HEADROOM AND PRESENT A NEAT APPEARANCE.</div> <div>4. ROUTE CABLE, EXPOSED OR ABOVE ACCESSIBLE CEILING, PARALLEL AND PERPENDICULAR TO WALLS AND BUILDING STRUCTURES.</div> <div>5. MAINTAIN ADEQUATE CLEARANCE, MINIMUM OF 12-INCHES, BETWEEN VENTILATING DUCTS, PIPING, SUSPENDED CEILINGS, AND HIGH TEMPERATURES</div> <div>6. PROVIDE VELCRO STRAPS ON ALL CABLE BUNDLES - ZIP TIES ARE NOT ACCEPTABLE</div> <div>7. PROVIDE CABLE SUPPORTS AT 60-INCH ON CENTER MINIMUM.</div> <div>8. SERVICE LOOPS:<div>a. PROVIDE 180-INCH SERVICE LOOP AT ALL CEILING DEVICES</div><div>b. PROVIDE 24-INCH SERVICE LOOP AT ALL WALL AND FLOOR DEVICES</div></div> <div>9. OBSERVE PROPER CLEARANCES FROM POWER, EQUIPMENT AND LIGHTING.</div> <div>10. ALL FIBER CABLING SHALL BE FUSION SPLICED.</div>

WIRELESS ACCESS POINTS
<div>1. WIRELESS ACCESS POINTS SHALL BE PROVIDED BY THE OWNER AND INSTALLED BY THE CABLING INSTALLER.</div> <div>2. ENCLOSURES ARE NOT REQUIRED FOR THIS PROJECT.</div>

RISER MANAGEMENT
<div>1. THE CABLING INSTALLER SHALL COORDINATE ALL RISER CABLING WITH THE OWNER AND ANY RISER MANAGEMENT COMPANY OR STANDARDS THEREWITH.</div>

CONNECTING CORDS, DEVICES AND ADAPTERS
<div>1. ALL SWITCH TO PATCH PANEL PATCH CABLES SHALL BE FURNISHED AND INSTALLED BY THE CABLING INSTALLER.</div> <div>2. FINAL QUANTITIES, LENGTHS, AND COLORS SHALL BE SUBMITTED AND APPROVED BY THE PROJECT MANAGER PRIOR TO ORDERING.</div> <div>3. THE INSTALLER SHALL PROVIDE THE FOLLOWING ADDITIONAL PACKAGE FOR STARTUP REQUIREMENTS:<div>QTY: 8 - 3M FIBER PATCH CORDS</div><div>QTY: 16 - 5-FOOT VOICE PATCH CORDS</div><div>QTY: 10 - 5-FOOT DATA PATCH CORDS</div><div>QTY: 12 - 15-FOOT DATA PATCH CORDS</div></div> <div>4. PATCH PANEL TO SWITCH PATCH CORD AND INSTALLATION IS REQUIRED BY THE CABLING INSTALLER:<div>WORKSTATION PRIMARY DATA: 100% BLUE</div><div>WORKSTATION SECONDARY DATA: 100% WHITE</div><div>WALL PHONE LOCATIONS: 100% BLACK</div><div>WIRELESS ACCESS POINTS: 100% YELLOW</div><div>SECURITY DEVICE: 100% RED</div></div> <div>5. FIELD PATCHING FROM DEVICE TO JACK PATCH CORD AND INSTALLATION SHALL BE PRICED AS AND ALTERNATE BY THE CABLING INSTALLER WITH A TYPICAL MINIMUM LENGTH OF 7'-FEET.<div>WORKSTATION PRIMARY DATA: 100% WHITE</div><div>WORKSTATION SECONDARY DATA: 100% WHITE</div><div>PRINTER STATIONS: 100% WHITE</div><div>CONFERENCE ROOMS: 100% WHITE</div><div>PHONE ROOMS: 100% WHITE</div><div>WIRELESS ACCESS POINTS: 100% WHITE</div><div>SECURITY DEVICE: 100% WHITE</div></div>

TELECOMMUNICATIONS BONDING SYSTEM
<div>1. TELECOMMUNICATIONS EQUIPMENT AND RACEWAYS SHALL BE PROPERLY GROUNDED AND BONDED IN ACCORDANCE WITH TIA/EIA-607 AND THE NEC.</div> <div>2. THE BONDING AND GROUNDING AND BONDING SYSTEM SHALL BE TESTED WITH AN "EARTH GROUND RESISTANCE TESTER, AMPROBE GP-1" USING THE "TWO-POINT TEST METHOD."</div>

SOUND MASKING REQUIREMENTS
<div>1. APPROXIMATE LOCATIONS SHOWN FOR SOUND MASKING DEVICES.</div> <div>2. COMPLETE, FUNCTIONAL, TURNKEY SYSTEM REQUIRED BY INSTALLER.</div> <div>3. FINAL DESIGN TO BE PROVIDED BY THE MANUFACTURER.</div> <div>4. THE FOLLOWING GENERAL CRITERIA ARE TO BE FOLLOWED:<div>a. OPEN OFFICE: 100% COVERAGE</div><div>b. CLOSED OFFICES: 100% COVERAGE</div><div>c. HALLWAYS: NO COVERAGE</div><div>d. CONFERENCE ROOMS: NO COVERAGE</div><div>e. BATHROOMS: NO COVERAGE</div><div>f. PAGING REQUIRED: NO</div><div>g. BACKGROUND MUSIC: NO</div></div> <div>5. TESTING REQUIREMENTS: FULL TEST AND BALANCE OF THE SYSTEM IS REQUIRED BY FACTORY AUTHORIZED STAFF WITH CERTIFICATION REPORT.</div> <div>6. TRAINING REQUIREMENTS: END USER TRAINING FOR LEVEL AND ZONE CONTROL REQUIRED.</div>

THE SOUND MASKING SYSTEM MUST BE INSTALLED AND OPERATIONAL PRIOR TO MOVE-IN.

PROJECT EXECUTION
<div>GENERAL<div>1. ALL INSTALLATION SHALL BE COMPLETED IN A NEAT, EFFICIENT, AND WORKMANLIKE MANNER.</div><div>2. DO NOT INSTALL EQUIPMENT AND MATERIALS THAT HAVE NOT BEEN SUBMITTED TO, REVIEWED AND APPROVED BY THE ENGINEER.</div><div>3. ALL INSTALLATION SHALL BE COMPLETED IN ACCORDANCE WITH MANUFACTURER'S RECOMMENDATION AND INDUSTRY BEST PRACTICES.</div><div>4. ALL INSTALLATION SHALL TAKE PLACE ONLY AFTER FULL COORDINATION IS COMPLETED.</div></div> <div>SITE OBSERVATION<div>1. THE ENGINEER SHALL PERFORM SITE OBSERVATIONS THROUGHOUT THE PROJECT.</div><div>2. REPORTS GENERATED FROM OBSERVATIONS SHALL NOTIFY INSTALLERS OF ISSUES AND DEFICIENCIES.</div><div>3. THE INSTALLER SHALL NOTIFY THE ENGINEER AT LEAST TEN DAYS PRIOR TO CLOSING WALLS, CEILINGS, AND RAISED FLOOR, ETC. TO ENSURE INSPECTIONS CAN BE COMPLETED.</div></div> <div>CHANGE ORDERS, MODIFICATIONS, REVISIONS AND DIRECTIVES<div>1. WHEN REVISIONS ARE MADE TO THE DRAWINGS, A CHANGE ORDER MUST BE SUBMITTED AND APPROVED IN ACCORDANCE WITH THE INSTALLER'S CONTRACT PRIOR TO ANY WORK COMMENCING.</div><div>2. CHANGE ORDERS MUST INCLUDE A FULL LISTING OF DEDUCTIONS AND ADDITIONS FOR LABOR AND MATERIALS AT THE SAME RATES PROPOSED ON THE ORIGINAL CONTRACT.</div><div>3. FIDELITY PROTECTION BY THE OWNER OR ENGINEER SHALL NOT BE CONSIDERED APPROVAL FOR ADDITIONAL COST. ALL ADDITIONS TO THE SCOPE MUST BE PRESENTED IN A FORMAL CHANGE OF CONTRACT REQUEST.</div><div>4. UNIT COSTS MUST BE EQUAL FOR THE PROJECT DURATION TO ADDS, CHANGES, AND DEDUCTS.</div></div>

TRAINING
<div>1. THE INSTALLER SHALL PROVIDE FULL END USER TRAINING OF ALL DEVICES, COMPONENTS, AND SYSTEMS.</div> <div>2. THE TRAINING SESSION(S) MUST BE SCHEDULED IN ADVANCE WITH A SYLLABUS OF ALL TOPICS.</div> <div>3. THE TRAINING MUST BE PRESENTED BY A FACTORY TRAINED AND CERTIFIED TECHNICAL EXPERT.</div> <div>4. TRAINING SHALL BE INCLUDED AT NO ADDITIONAL COST TO THE OWNER AND SATISFIED UPON ACCEPTANCE AND FULL UNDERSTANDING OF THE SYSTEM BY THE OWNER.</div> <div>5. MINIMUM TRAINING COMPONENTS SHALL INCLUDE:<div>REVIEW SYSTEM CAPABILITIES AND FEATURES</div><div>REVIEW DEVICE LOCATIONS AND RECORD DRAWINGS</div><div>REVIEW EACH SYSTEM</div><div>REVIEW EACH FUNCTION OF EACH SYSTEM</div><div>IDENTIFY PROCEDURES FOR ALL STANDARD OWNER FUNCTIONS</div><div>PRESENT ADVANCES FUNCTIONS AND USER CUSTOMIZATIONS AS REQUIRED</div><div>WHAT TO DO IF SOMETHING GOES WRONG</div></div>

SECURITY REQUIREMENTS
<div>GENERAL PROGRAMMING AND INTEGRATION<div>1. ALL SYSTEMS SHALL BE PROGRAMMED TO A FULLY FUNCTIONAL POINT BY THE SECURITY INSTALLER. THIS INCLUDES COMPUTER AND SERVER SETUP, NETWORK COORDINATION, SOFTWARE INSTALLATION, SOFTWARE CONFIGURATION OF ALL COMPONENTS TO ACHIEVE OPTIMUM PERFORMANCE OF THE INSTALLED COMPONENTS.</div><div>2. ALL SYSTEMS SHALL BE INTEGRATED UNLESS NOTED OTHERWISE.</div></div> <div>ACCESS CONTROL AND MANAGEMENT SYSTEM<div>1. HARDWARE: VERKADA</div><div>2. SOFTWARE: VERKADA - MUST INCLUDE BLUBOX PROGRAMMING & COMMISSIONING</div><div>3. CREDENTIALS: PROVIDE 200 ICCLASS CARDS</div><div>4. PRINTING: PROVIDE MONOCHROME PRINTER AND SUPPLIES FOR 200 BADGES</div><div>5. MOBILE CREDENTIALS: PROVIDE ALTERNATE PRICE FOR 200 MOBILE</div><div>6. VISITOR MANAGEMENT: FULLY INTEGRATED VISITOR MANAGEMENT REQUIRED</div><div>7. LOOKING HARDWARE: BY GC <\$C TO REVIEW ALL SUBMITTALS > 8-HOUR BATTERY BACKUP REQUIRED</div><div>8. BATTERY BACKUP: *MAGNETIC LOCKS NOT ON BATTERY BACKUP*</div></div> <div>HLTOWER LOCKING SYSTEM<div>1. LOCKING HARDWARE FOR STAIRS MUST POSITIVELY LATCH - FAIL SAFE</div><div>2. POWER SUPPLIES & CABLE TO BE PROVIDED BY THE SECURITY CONTRACTOR</div><div>3. FIRE RELAY BY ELECTRICAL CONTRACTOR</div><div>4. LOCKING HARDWARE TO BE PROVIDED AS SPECIFIED IN DIVISION 08</div><div>5. STAIRWELL LOCKS TO UNLOCK IMMEDIATELY UPON SIGNAL</div><div>6. ROUGH-IN REQUIRED FOR TENANT CARD READER TO BE INSTALLED ON EACH STAIR DOOR</div><div>7. LEVEL 1 & 2 STAIRWELL ENTRY IS PART OF THE BASE BUILDING ACCESS CONTROL SYSTEM</div></div> <div>VIDEO SURVEILLANCE SYSTEM<div>1. CAMERAS: IP BASED</div><div>2. FUNCTION: RECORD & LIVE MONITORING</div><div>3. SOFTWARE: COORDINATE WITH OWNER</div><div>4. SERVER: BY SECURITY VENDOR (MOUNT IN LEVEL 1 IDF RACK)</div><div>5. LAN SWITCHES: BUILDING NETWORK (UPS BY IT VENDOR)</div><div>6. PATCHING: BY SECURITY VENDOR</div><div>7. RECORDING DAYS: 30 DAYS</div><div>8. RECORDING QUALITY: 7 FPS 1080P H.265 HIGH QUALITY</div><div>9. RECORD ON: 24-HRS 7-DAYS</div><div>10. EXTERNAL VIEW: REMOTE VIEW & MOBILE APP REQUIRED</div></div> <div>ALARM SYSTEM<div>1. PANEL: ALARM PANEL WITH 8-HOUR BATTERY BACKUP REQUIRED</div><div>2. CENTRAL MONITORING: UL LISTED CENTRAL STATION MONITORING REQUIRED</div><div>3. COMMUNICATIONS: INTERNET PRIMARY CELLULAR BACKUP</div><div>4. BATTERY BACKUP: 8-HOUR BATTERY BACKUP REQUIRED</div></div> <div>SECURITY SYSTEM TESTING REQUIREMENTS<div>1. ALL PROVIDED SCOPE SHALL BE TESTED AND REPORTED WITH AH CERTIFICATION FROM THE INSTALLER AND THE DATE AND TIME THE TESTING TOOK PLACE.</div><div>2. ALL ACTIVE COMPONENTS SHALL BE TESTED BASED UPON THE DESIGNED CRITERIA FOR THE SYSTEM AND A PASS/FAIL TEST FOR ALL FEATURES SHALL BE PROVIDED.</div><div>3. SCREEN SHOTS OF ALL CAMERAS TO BE PROVIDED TO THE OWNER AFTER FINAL INSTALLATION AND FOCUS UP TO ONE ADJUSTMENT FOR EACH CAMERA MUST BE FIGURED TO ENSURE THAT THE OWNER HAS ACCEPTABLE VIEWS.</div><div>4. ALARM DEVICES TO BE TESTED LOCALLY AND AT CENTRAL STATION UPON COMPLETION WITH A REPORT</div><div>5. INTERCOM SHALL BE TESTED FROM ALL UNITS WITH OWNERSHIP PRESENT.</div><div>6. CARD ACCESS PORTALS SHALL BE TESTED AND DOCUMENTED WITH THE FOLLOWING AT EACH OPENING:<ul style="list-style-type: none">VALID CARD READINVALID CARD DENYDOOR FORCED OPEN (AS APPLICABLE)DOOR HELD OPEN (AS APPLICABLE)</div></div>

PROJECT TURNOVER PREMIUM TIME
<div>1. DURING THE MOVE-IN OF THE SPACE, THE CABLING INSTALLER SHALL PROVIDE A TECHNICIAN ON PREMIUM TIME TO BE ON SITE TO RESOLVE INSTALLATION AND/OR PATCHING ISSUES FOR AT LEAST 8-HOURS.</div> <div>2. FOR MULTIPLE PHASES WITH MULTIPLE MOVES, 8-HOURS OF PREMIUM TIME SHALL BE PROVIDED PER PHASE.</div> <div>3. THE CABLING INSTALLER SHALL PROVIDE ON STRAIGHT TIME THE INSTALLATION OF OWNER PROVIDED EQUIPMENT IN THE TELECOMMUNICATION SPACES. A MINIMUM OF 2-HOURS PER MDF/IDF ROOM SHALL BE INCLUDED.</div>

SHEET LIST	
SHEET NUMBER	SHEET NAME
T-001	TECHNOLOGY GENERAL
T-121	TECHNOLOGY PLAN - FIRST FLOOR
T-122	TECHNOLOGY PLAN - SECOND FLOOR
T-123	TECHNOLOGY PLAN - THIRD FLOOR
T-300	TECHNOLOGY UNIT PLANS

SCOPE DELINEATION MATRIX	GC / OTHER	AV	SECURITY	DATA CABLING	ELECTRICAL	FURNITURE	OWNERS IT TEAM
RESPONSIBILITY: X - FURNISH & INSTALL F - FURNISH I - INSTALL V - VERIFY (UNKNOWN AT TIME OF ISSUANCE)							
POWER, BACK BOXES, & CONDUIT					X		
TELECOMMUNICATIONS BONDING SYSTEM					X		
BONDING OF TELECOMMUNICATIONS RACKS & DEVICES				X			
DATA RACKS & CABINETS				X			
CABLE TRAY / WIRE MANAGEMENT				X			
DATA CABLING				X			
DATA CABLE LABELING, TESTING & CERTIFICATION				X			
WIRELESS ACCESS POINTS				I		F	
PATCH CORDS IN IDF				X			
PATCH CORDS AT DEVICE LOCATIONS				F		I	
NETWORK & PHONE EQUIPMENT				I		F	
UPS				V			
FIRESTOPPING		X					
CONFERENCE ROOM TABLE BOXES						X	
CONFERENCE ROOM TABLE INSERTS						X	
SOUND MASKING SYSTEM				X			
AV EQUIPMENT		X					
AV CABLING							
CARD ACCESS DEVICES & CABLING				X			
ACCESS CARDS/CREDENTIALS				X			
CARD ACCESS SERVER & SOFTWARE				X			
ELECTRIFIED LOCKING HARDWARE	X						
ALARM DEVICES & CABLING			X				
ALARM MONITORING			X				
VIDEO SURVEILLANCE DEVICES			X				
VIDEO SURVEILLANCE RECORDING & SOFTWARE			X				
PERMIT FOR SECURITY		X					
VOIP/DATA OUTLET, MOUNT AT 18" AFF. PROVIDE TWO (2) CATEGORY 6/23 AWG/UTP CABLES FOR DATA SERVICE. TERMINATE CABLES ON CATEGORY 6 PATCH PANELS. SUPPORT CABLES IN CEILING SPACE WITH J-HOOKS ON 4'-0" CENTERS OR EXISTING PATHWAYS. (#) INDICATES QUANTITY IF GREATER THAN 2.							
VOICE OUTLET, MOUNT AT 18" AFF. PROVIDE ONE (1) CATEGORY 6/23 AWG/UTP CABLES FOR DATA SERVICE. TERMINATE VOICE CABLES ON CATEGORY 6 PATCH PANELS. SUPPORT CABLES IN CEILING SPACE WITH J-HOOKS ON 4'-0" CENTERS OR EXISTING PATHWAYS. (#) INDICATES QUANTITY IF GREATER THAN 1.							
DATA OUTLET, MOUNT AT 18" AFF. PROVIDE ONE (1) CATEGORY 6/23 AWG/UTP CABLES FOR DATA SERVICES. TERMINATE CABLES ON CATEGORY 6 PATCH PANELS. SUPPORT CABLES IN CEILING SPACE WITH J-HOOKS ON 4'-0" CENTERS OR EXISTING PATHWAYS. (#) INDICATES QUANTITY IF GREATER THAN 1.							
WIRELESS DATA ACCESS POINT. PROVIDE ONE (1) NEW CATEGORY 6/23 AWG/UTP CABLES FOR DATA SERVICES. TERMINATE VOICE CABLES ON CATEGORY 6 PATCH PANELS. SUPPORT CABLES IN CEILING SPACE WITH J-HOOKS ON 4'-0" CENTERS. STATION OUTLET MOUNTED IN CEILING SPACE.							
CATV / MATV / IPTV OUTLET. COORDINATE MOUNTING HEIGHT WITH AV CONTRACTOR. PROVIDE ONE (1) RG-6 COAX CABLE AND ONE (1) CATEGORY 6/23 AWG/UTP CABLE FOR DATA SERVICE FROM STATION OUTLET TO DESIGNATED TELECOM ROOM. TERMINATE CABLES ON CATEGORY 6 PATCH PANELS. PROVIDE 1" CONNECTOR ON SINGLE GANG WALL PLATE. PROVIDE RG-11 CABLE FOR CABLE DISTANCES OVER 150'-0".							
CCTV PROVIDED BY STRUCTURED CABLING CONTRACTOR. PROVIDE ONE (1) CATEGORY 6/23 AWG/UTP CABLES FOR DATA SERVICES. TERMINATE CABLES ON CATEGORY 6 PATCH PANELS. SUPPORT CABLES IN CEILING SPACE WITH J-HOOKS ON 4'-0" CENTERS. GROUP CAMERAS TOGETHER ON PATCH PANEL.							
CEILING SPEAKER. PROVIDE ONE (1) 14 AWG/UTP PAIR CABLES FOR AUDIO SERVICES. COORDINATE WITH OWNER FOR HEAD END LOCATION. SUPPORT CABLES IN CEILING SPACE WITH J-HOOKS ON 4'-0" CENTERS. GROUP CAMERAS TOGETHER ON PATCH PANEL.							
WALL SPEAKER. PROVIDE ONE (1) 14 AWG/UTP PAIR CABLES FOR AUDIO SERVICES. COORDINATE WITH OWNER FOR HEAD END LOCATION. SUPPORT CABLES IN CEILING SPACE WITH J-HOOKS ON 4'-0" CENTERS. GROUP CAMERAS TOGETHER ON PATCH PANEL.							
CARD READER. PROVIDE ONE (1) 226 AWG/UTP CABLE FROM READER OUTLET MOUNTED ON WALL TO LOCAL MDF / IDF ROOM. MOUNT OUTLET IN SINGLE GANG BOX COORDINATE WITH ELECTRICAL CONTRACTOR. SEE ARCHITECTURAL PLANS FOR DOOR HARDWARE MOUNTING OPTIONS.							
MEDIA DISTRIBUTION UNIT. PROVIDE ENCLOSURE TO DISTRIBUTE CABLING FOR RESIDENT DWELLING. PROVIDE CATEGORY 6 AND RG-6 COAX CABLES TO LOCATIONS SHOWN IN ROOM DETAIL.							
AUDIO / VIDEO LOCATION. COORDINATE DEVICE / OUTLET REQUIREMENTS. AV = HDMI INPUT, C = VOLUME CONTROL. COORDINATE WITH OWNER FOR HEAD END LOCATION. SUPPORT CABLES IN CEILING SPACE WITH J-HOOKS ON 4'-0" CENTERS.							
TRACKING GATE WAY. PROVIDE ONE (1) CATEGORY 6/23 AWG/UTP CABLE FOR DATA SERVICES. COORDINATE WITH OWNER FOR HEAD END LOCATION. SUPPORT CABLES IN CEILING SPACE WITH J-HOOKS ON 4'-0" CENTERS.							

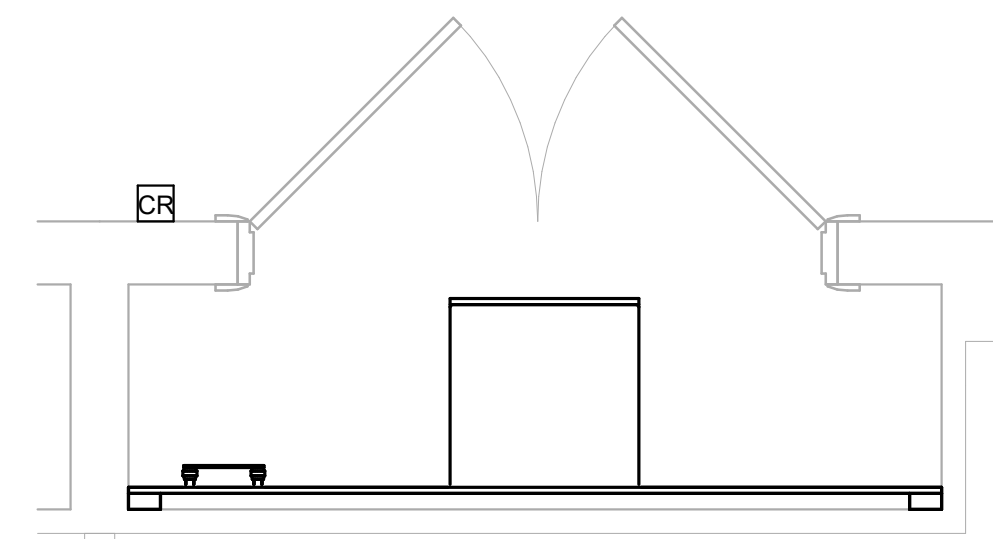
Autodesk Docs://MCP - Stage 2 - MC_AL_LU/2024-03276 - MEP - MC-AL.rvt



1 TECHNOLOGY PLAN - FIRST FLOOR
T-121/ 1/8" = 1'-0"

GENERAL NOTES:

1. DATA CONNECTIONS AND J-BOXES ARE SHOWN IN THEIR APPROXIMATE REQUIRED LOCATION. CONTRACTOR SHALL COORDINATE WITH OTHER TRADES FOR ACTUAL HEIGHTS AND LOCATIONS PRIOR TO INSTALLATION.
2. ANY CABLES INSTALLED IN CABLE TRAY SYSTEMS NOT SPECIFICALLY SHOWN ON THESE DRAWINGS SHALL BE APPROVED BY THE OWNER PRIOR TO INSTALLATIONS. COORDINATE CABLE TRAY INSTALLATION WITH MECHANICAL EQUIPMENT, ELECTRICAL EQUIPMENT, DUCTWORK, CONDUIT, PIPING, AND ALL OTHER TRADES PRIOR TO ORDERING AND INSTALLING.
3. INSTALL ALL EQUIPMENT IN ACCORDANCE WITH MANUFACTURERS WRITTEN INSTRUCTIONS.
4. REMOVE ALL BURRS AND SHARP EDGES.
5. FIRESTOP AT PENETRATIONS OF FIRE AND SMOKE BARRIERS.
6. ALL CABLE NOT IN CONDUIT AND LOCATED IN PLENUM SPACES SHALL BE PLENUM RATED, EXCLUDING CABLING WITH PLENUM RATED CEILING EQUIPMENT ENCLOSURES.



2 TECHNOLOGY PLAN - FIRST FLOOR - IT 140
T-121/ 1/2" = 1'-0"

Salas O'Brien

salasobrien.com
Atlanta
3200 Windy Hill Road, SE, Suite 200E
Atlanta, GA 30339

Project Number: 2024-03276

8/22/2025 5:25:19 PM

**WATERFORD CAMPUS - ASSISTED
LIVING MEMORY CARE BUILDING**
601 UNIVERSE BLVD JUNO BEACH, FL 33048



THW
DESIGN

COPYRIGHT ©2017
THOMPSON HANCOCK WITTE
& ASSOCIATES, INC.

2100 RiverEdge Parkway
Suite 900
Atlanta, GA 30328

PH: 770 916 2220
FAX: 770 916 2299

www.thw.com

PRELIMINARY
DRAWINGS. NOT TO BE
USED FOR
RECORDING,
IMPLEMENTATION,
REGULATORY
APPROVAL,
PERMITTING, OR

**DESIGN
DEVELOPMENT**

Project No.: 2021009
Date: 08/22/2025

**TECHNOLOGY
PLAN - FIRST
FLOOR**

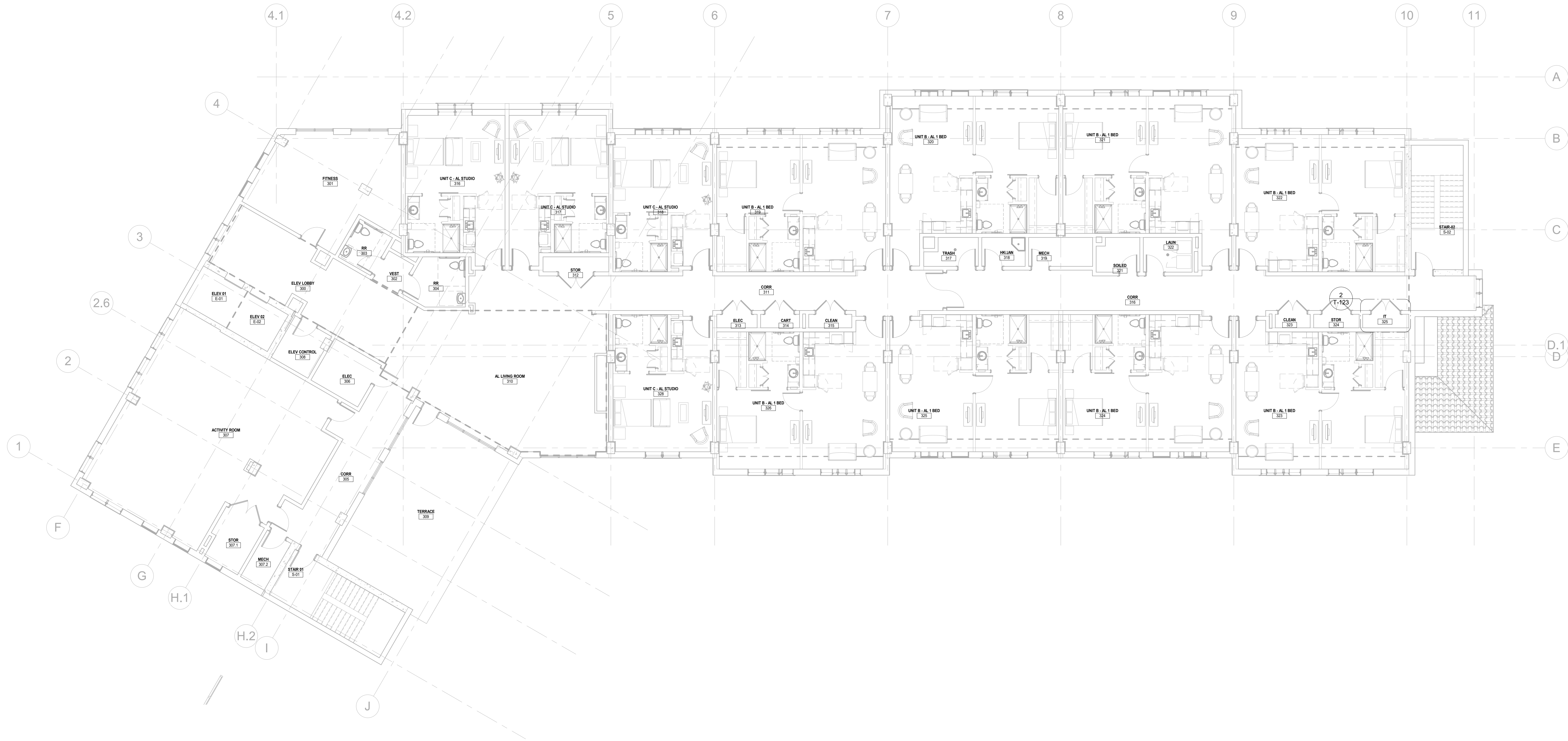
T-121



10

8/22/2025 5:25:21 PM

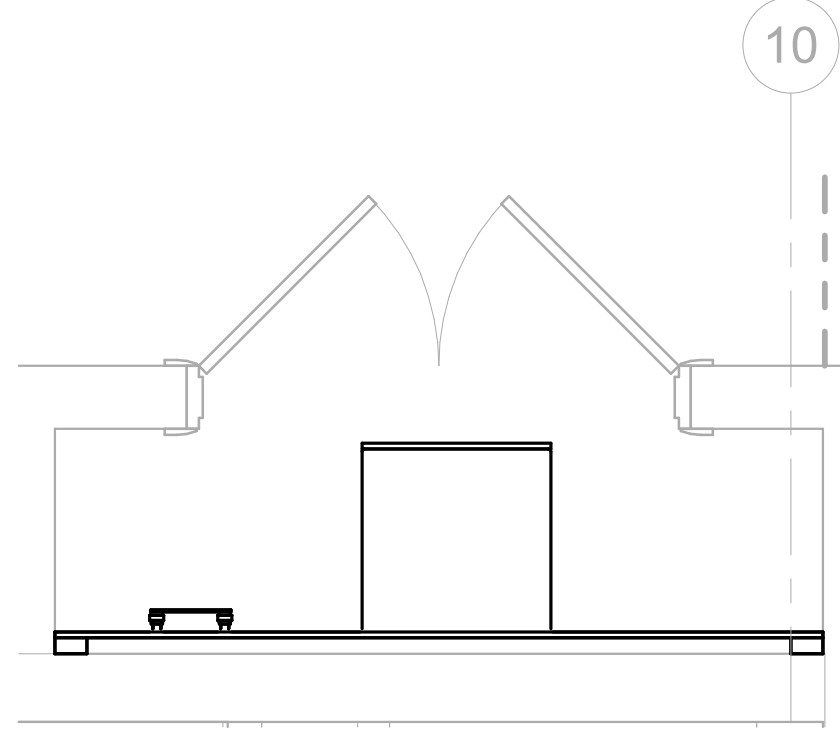
Autodesk Docs://MCP - Stage 2 - MC_AL_LU/2024-03276 - MEP - MC-AL.rvt



1 TECHNOLOGY PLAN - THIRD FLOOR
1/8" = 1'-0"

GENERAL NOTES:

1. DATA CONNECTIONS AND J-BOXES ARE SHOWN IN THEIR APPROXIMATE REQUIRED LOCATION. CONTRACTOR SHALL COORDINATE WITH OTHER TRADES FOR ACTUAL HEIGHTS AND LOCATIONS PRIOR TO INSTALLATION.
2. ANY CABLES INSTALLED IN CABLE TRAY SYSTEMS NOT SPECIFICALLY SHOWN ON THESE DRAWINGS SHALL BE APPROVED BY THE OWNER PRIOR TO INSTALLATIONS. COORDINATE CABLE TRAY INSTALLATION WITH MECHANICAL EQUIPMENT, ELECTRICAL EQUIPMENT, DUCTWORK, CONDUIT, PIPING, AND ALL OTHER TRADES PRIOR TO ORDERING AND INSTALLING.
3. INSTALL ALL EQUIPMENT IN ACCORDANCE WITH MANUFACTURES WRITTEN INSTRUCTIONS.
4. REMOVE ALL BURRS AND SHARP EDGES.
5. FIRESTOP AT PENETRATIONS OF FIRE AND SMOKE BARRIERS.
6. ALL CABLE NOT IN CONDUIT AND LOCATED IN PLENUM SPACES SHALL BE PLENUM RATED, EXCLUDING CABLING WITH PLENUM RATED CEILING EQUIPMENT ENCLOSURES.



2 TECHNOLOGY PLAN - THIRD FLOOR - IT 325
1/2" = 1'-0"

Salas O'Brien
salasobrien.com
Atlanta
3200 Windy Hill Road, SE, Suite 200E
Atlanta, GA 30339

Project Number: 2024-03276

8/22/2025 5:25:22 PM

WATERFORD CAMPUS - ASSISTED LIVING MEMORY CARE BUILDING 601 UNIVERSE BLVD JUNO BEACH, FL 33048



COPYRIGHT ©2017
THOMPSON HANCOCK WITTE
& ASSOCIATES, INC.

2100 RiverEdge Parkway
Suite 900
Atlanta, GA 30328

PH: 770 916 2220
FAX: 770 916 2299

www.thw.com

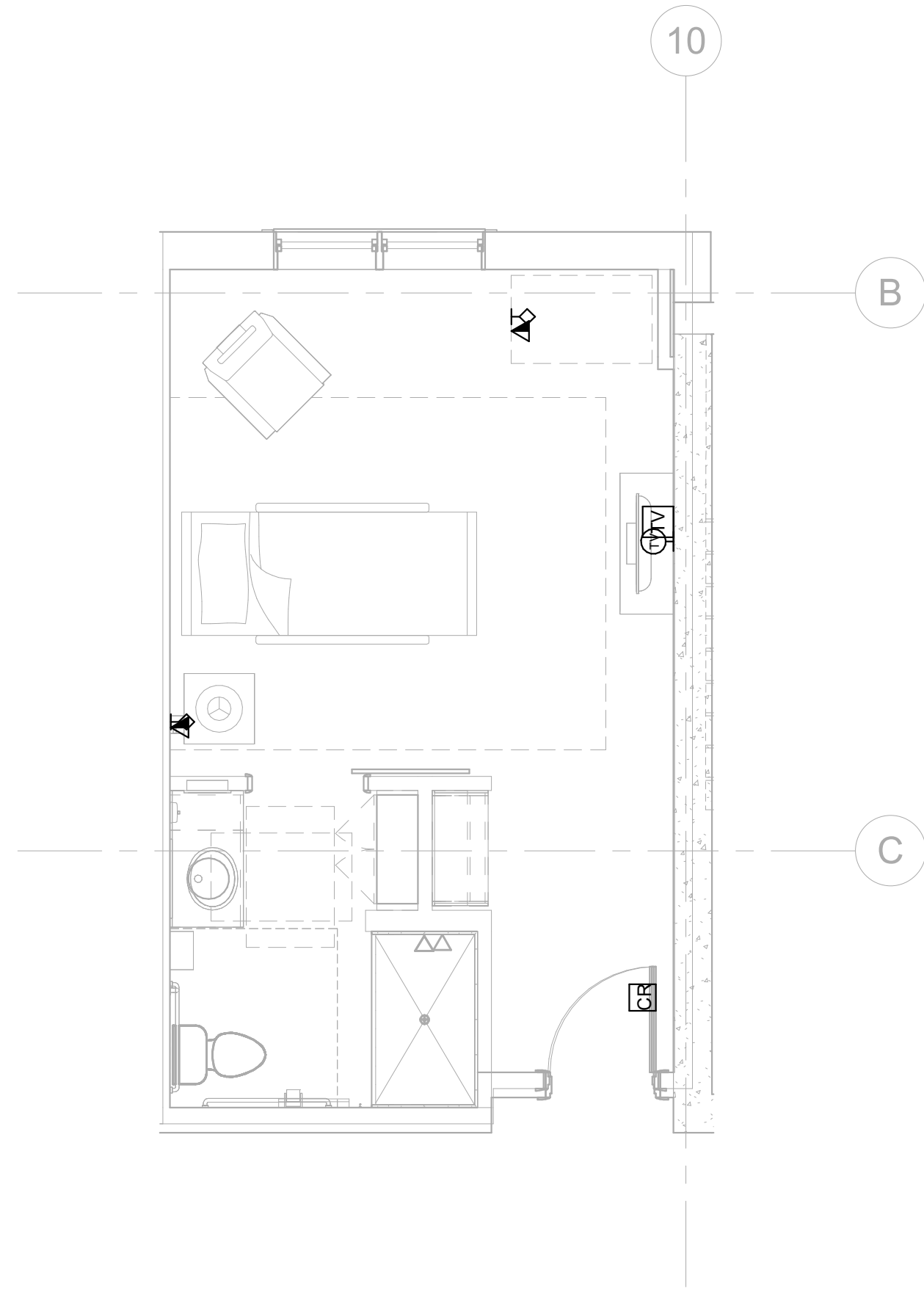
PRELIMINARY
DRAWINGS. NOT TO BE
USED FOR
RECORDING,
IMPLEMENTATION,
REGULATORY
APPROVAL,
PERMITTING, OR

DESIGN DEVELOPMENT

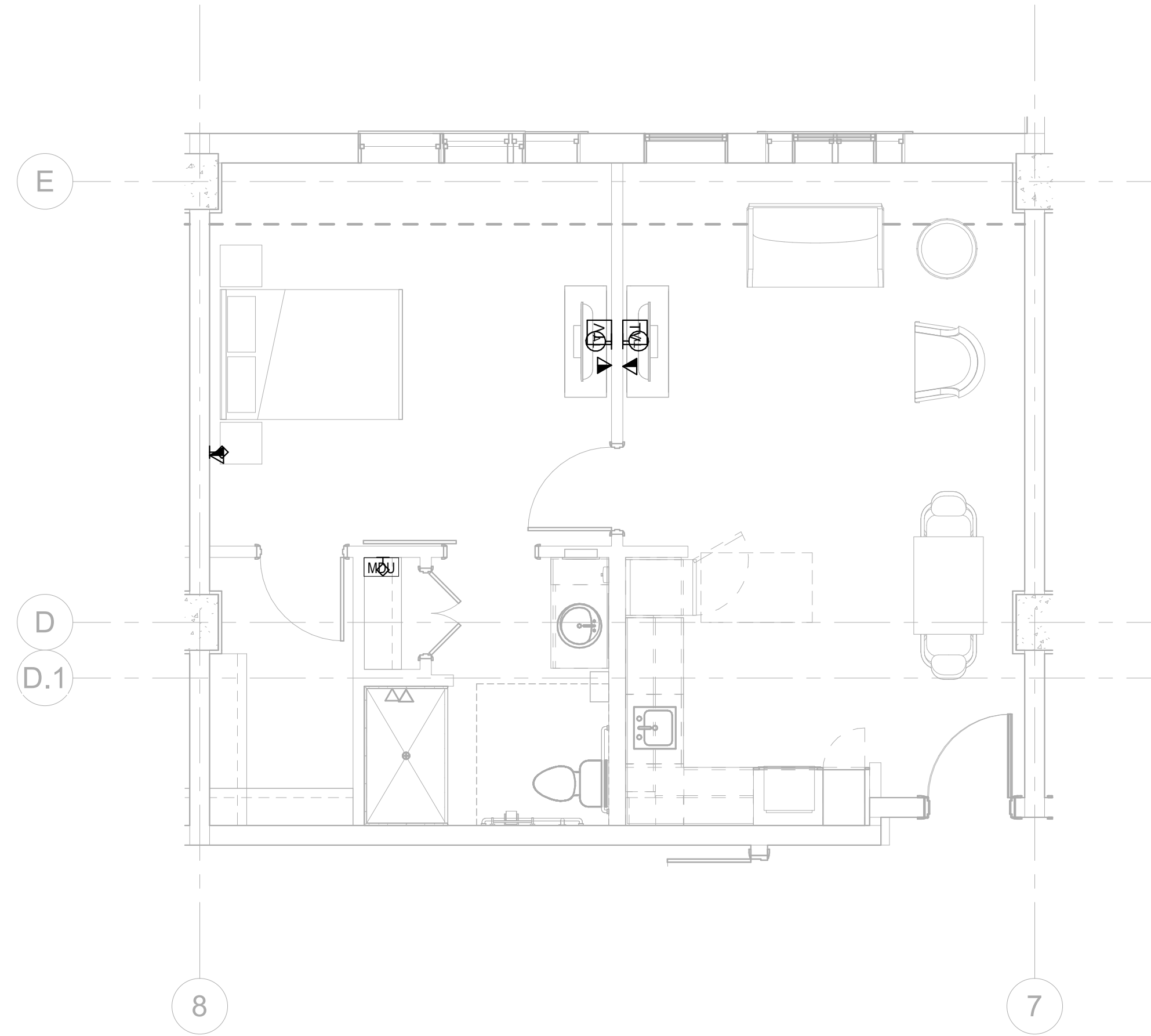
Project No.: 2021009
Date: 08/22/2025

TECHNOLOGY PLAN - THIRD FLOOR

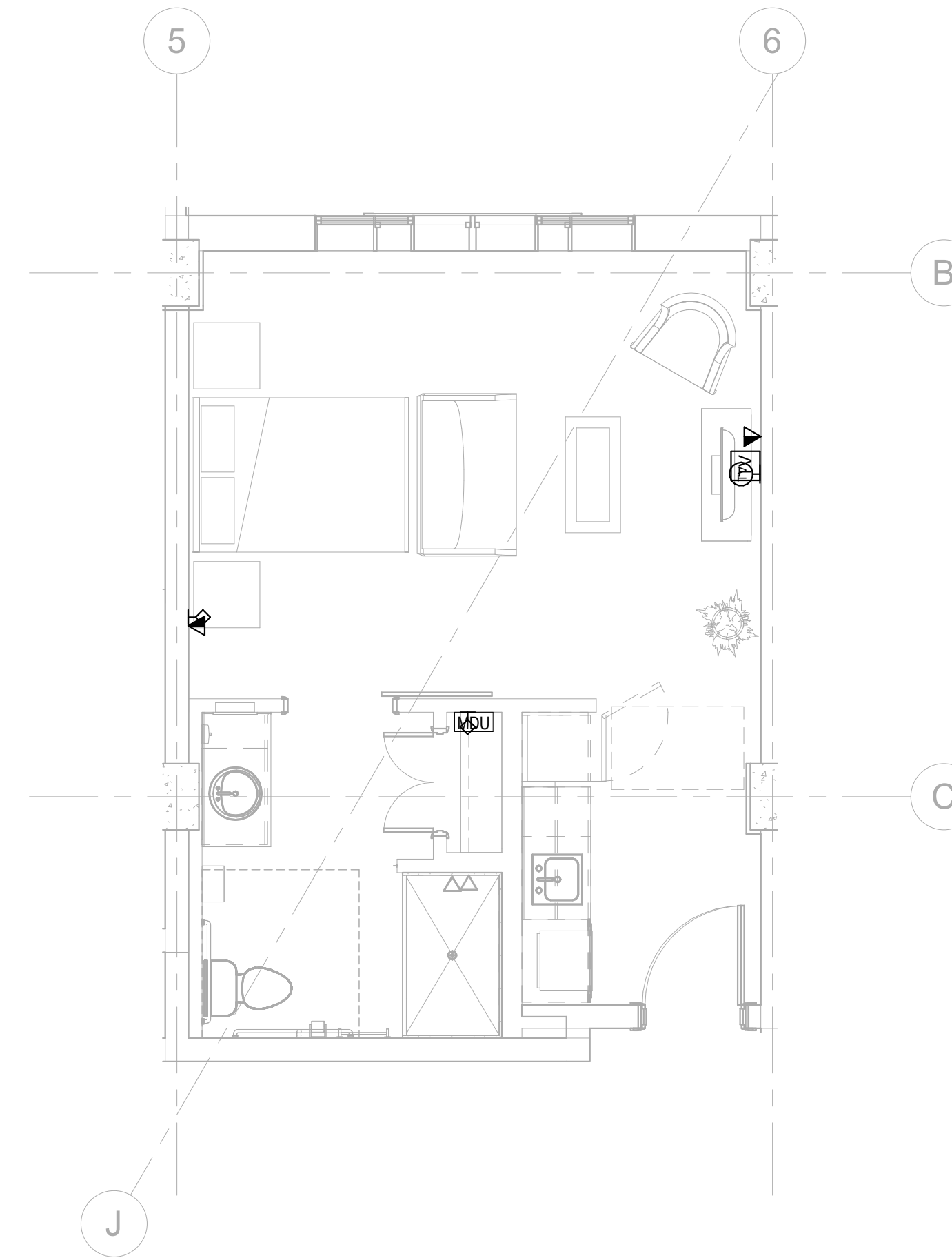
T-123



1 TECHNOLOGY PLAN - UNIT A - MC
T-300 / 1/4" = 1'-0"



2 TECHNOLOGY PLAN - UNIT B - AL
T-300 / 1/4" = 1'-0"



3 TECHNOLOGY PLAN - UNIT C - AL
T-300 / 1/4" = 1'-0"



salasobrien.com
Atlanta
3200 Windy Hill Road, SE, Suite 200E
Atlanta, GA 30339

Project Number: 2024-03276

8/22/2025 5:25:23 PM

WATERFORD CAMPUS - ASSISTED LIVING MEMORY CARE BUILDING 601 UNIVERSE BLVD JUNO BEACH, FL 33048



THW
DESIGN

COPYRIGHT ©2017
THOMPSON HANCOCK WITTE
& ASSOCIATES, INC.

2100 RiverEdge Parkway
Suite 900
Atlanta, GA 30328

PH: 770 916 2220
FAX: 770 916 2299

www.thw.com

PRELIMINARY
DRAWINGS. NOT TO BE
USED FOR
RECORDING,
IMPLEMENTATION,
REGULATORY
APPROVAL,
PERMITTING, OR

**DESIGN
DEVELOPMENT**

Project No.: 2021009
Date: 08/22/2025

**TECHNOLOGY
UNIT PLANS**

T-300