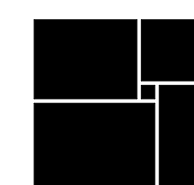


	12/01/25	ISSUED FOR CONSTRUCTION
NO.	DATE	DESCRIPTION

WATERFORD CAMPUS - ASSISTED
LIVING MEMORY CARE BUILDING
601 UNIVERSE BLVD JUNO BEACH, FL 33048



THW
DESIGN

COPYRIGHT 2017
THOMPSON HANCOCK
WITTE & ASSOCIATES, INC.

2100 RiverEdge Parkway
Suite 900
Atlanta, GA 30328

PH: 770 916 2220
FAX: 770 916 2299

www.thw.com



salasobrien.com
Atlanta
 3200 Windy Hill Road, SE, Suite 200E
 Atlanta, GA 30339

Project Number: 2024-03276

12/2/2025 9:33:48 AM

**ISSUED FOR
CONSTRUCTION**

Project No.: 2021009
Date: 12/01/2025

TECHNOLOGY PLAN - FIRST FLOOR

T-121



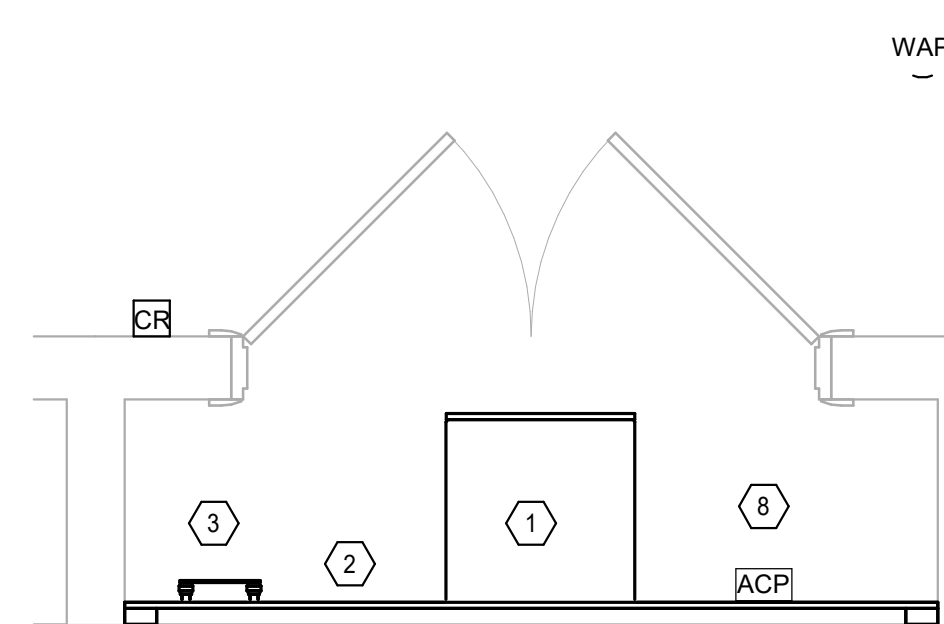
1 TECHNOLOGY PLAN - FIRST FLOOR
T-121 1/8" = 1'-0"

GENERAL NOTES:

1. DATA CONNECTIONS AND J-BOXES ARE SHOWN IN THEIR APPLICABLE REQUIRED LOCATION. CONTRACTOR SHALL COORDINATE WITH OTHER TRADES FOR ACTUAL HEIGHTS AND LOCATIONS PRIOR TO INSTALLATION.
2. ANY CABLES INSTALLED IN CABLE TRAY SYSTEMS NOT SPECIFICALLY SHOWN ON THESE DRAWINGS SHALL BE APPROVED BY THE OWNER PRIOR TO INSTALLATION. COORDINATE CABLE TRAY INSTALLATION WITH MECHANICAL EQUIPMENT, ELECTRICAL EQUIPMENT, DUCTWORK, CONDUIT PIPING, AND ALL OTHER TRADES PRIOR TO ORDERING AND INSTALLING.
3. INSTALL ALL EQUIPMENT IN ACCORDANCE WITH MANUFACTURER WRITTEN INSTRUCTIONS.
4. REMOVE ALL BURRS AND SHARP EDGES.
5. FIRESTOP AT PENETRATIONS OF FIRE AND SMOKE BARRIERS.
6. ALL CABLE NOT IN CONDUIT AND LOCATED IN PLENUM SPACES SHALL BE PLENUM RATED, EXCLUDING CABLING WITH PLENUM RATED CEILING EQUIPMENT ENCLOSURES.
7. COORDINATE DEVICE HEIGHTS AND LOCATIONS WITH ARCHITECT AND ELECTRICAL DRAWINGS PRIOR TO INSTALLATION.

KEYED NOTES:

- * ALL KEYLED NOTES MAY NOT BE USED.
- 1 PROVIDE WALL MOUNTED RACK.
- 2 PROVIDE FIRE RATED TELECOM BACKBOARD.
- 3 PROVIDE TELECOM GROUND BAR.
- 4 PROVIDE WANDER GUARD ALERT SYSTEM ON DOOR WITH REMOTE SOUNDER.
- 5 PROVIDE DELAYED EGRESS THROUGH JNL WANDERGUARD SYSTEM.
- 6 PROVIDE SOUND BAR.
- 7 PROVIDE DATA AND POWER ONLY.
- 8 ACCESS CONTROL PANEL



2 TECHNOLOGY PLAN - FIRST FLOOR - IT 140
T-121 1/2" = 1'-0"

Autodesk Docs://MCP - Stage 2 - MC_AL_LI/2024-03276 - MEP - MC-AL.rvt



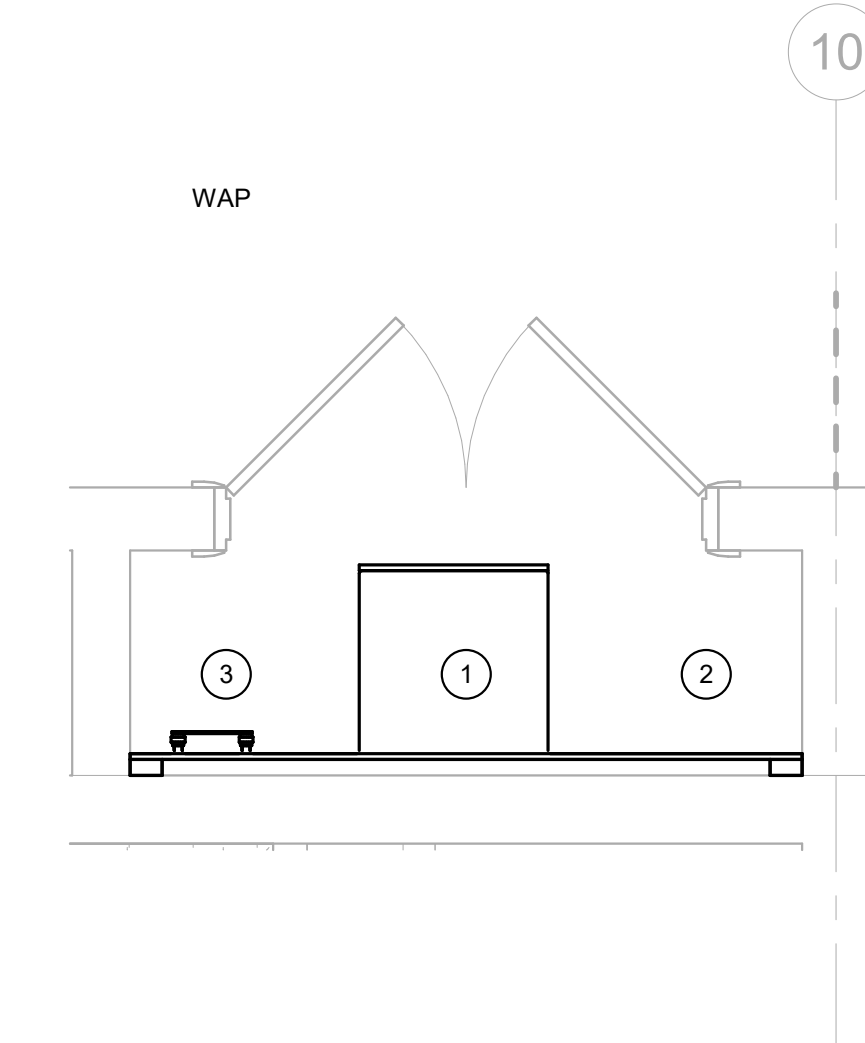
1 TECHNOLOGY PLAN - SECOND FLOOR
T-122 1/8" = 1'-0"

GENERAL NOTES:

1. DATA CONNECTIONS AND J-BOXES ARE SHOWN IN THEIR APPROXIMATE REQUIRED LOCATION. CONTRACTOR SHALL COORDINATE WITH OTHER TRADES FOR ACTUAL HEIGHTS AND LOCATIONS PRIOR TO INSTALLATION.
2. ANY CABLES INSTALLED IN CABLE TRAY SYSTEMS NOT SPECIFICALLY SHOWN ON THESE DRAWINGS SHALL BE APPROVED BY THE OWNER PRIOR TO INSTALLATIONS. COORDINATE CABLE TRAY INSTALLATION WITH MECHANICAL EQUIPMENT, ELECTRICAL EQUIPMENT, DUCTWORK, CONDUIT, PIPING, AND ALL OTHER TRADES PRIOR TO ORDERING AND INSTALLING.
3. INSTALL ALL EQUIPMENT IN ACCORDANCE WITH MANUFACTURERS WRITTEN INSTRUCTIONS.
4. REMOVE ALL BURRS AND SHARP EDGES.
5. FIRESTOP AT PENETRATIONS OF FIRE AND SMOKE BARRIERS.
6. ALL CABLE NOT IN CONDUIT AND LOCATED IN PLENUM SPACES SHALL BE PLENUM RATED, EXCLUDING CABLING WITH PLENUM RATED CEILING EQUIPMENT ENCLOSURES.
7. COORDINATE DEVICE HEIGHTS AND LOCATIONS WITH ARCHITECT AND ELECTRICAL DRAWINGS PRIOR TO INSTALLATION.

KEYED NOTES:

- * ALL KEYED NOTES MAY NOT BE USED.
- 1 PROVIDE WALL MOUNTED RACK.
 - 2 PROVIDE FIRE RATED TELECOM BACKBOARD.
 - 3 PROVIDE TELECOM GROUND BAR.
 - 4 PROVIDE WANDER GUARD ALERT SYSTEM ON DOOR WITH REMOTE SOUNDER.
 - 5 PROVIDE DELAYED EGRESS THROUGH JNL WANDERGUARD SYSTEM.
 - 6 PROVIDE SOUND BAR.
 - 7 PROVIDE DATA AND POWER ONLY.
 - 8 ACCESS CONTROL PANEL.



2 TECHNOLOGY PLAN - SECOND FLOOR - IT 229
T-122 1/2" = 1'-0"

Salas O'Brien

salasobrien.com
Atlanta
3200 Windy Hill Road, SE, Suite 200E
Atlanta, GA 30339

Project Number: 2024-03276

**WATERFORD CAMPUS - ASSISTED
LIVING MEMORY CARE BUILDING**
601 UNIVERSE BLVD JUNO BEACH, FL 33048

THW
DESIGN

COPYRIGHT 2017
THOMPSON HANCOCK
WITTE & ASSOCIATES, INC.

2100 RiverEdge Parkway
Suite 900
Atlanta, GA 30328

PH: 770 916 2220
FAX: 770 916 2299

www.thw.com

**ISSUED FOR
CONSTRUCTION**

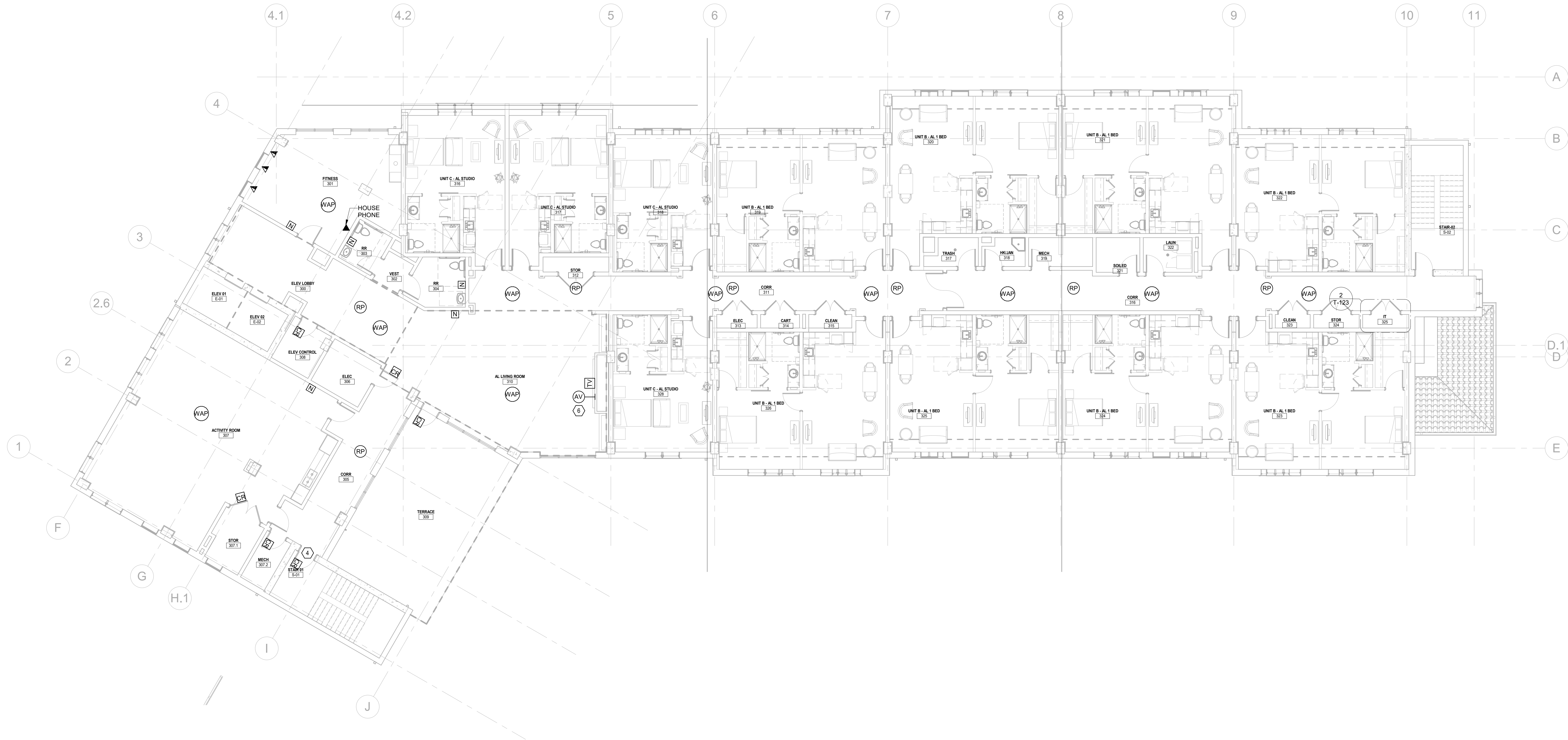
Project No.: 2021009
Date: 12/01/2025

**TECHNOLOGY
PLAN -
SECOND
FLOOR**

T-122

12/2/2025 9:33:56 AM

Autodesk Docs://MCP - Stage 2 - MC_AL_LL/2024-03276 - MEP - MC-AL.rvt



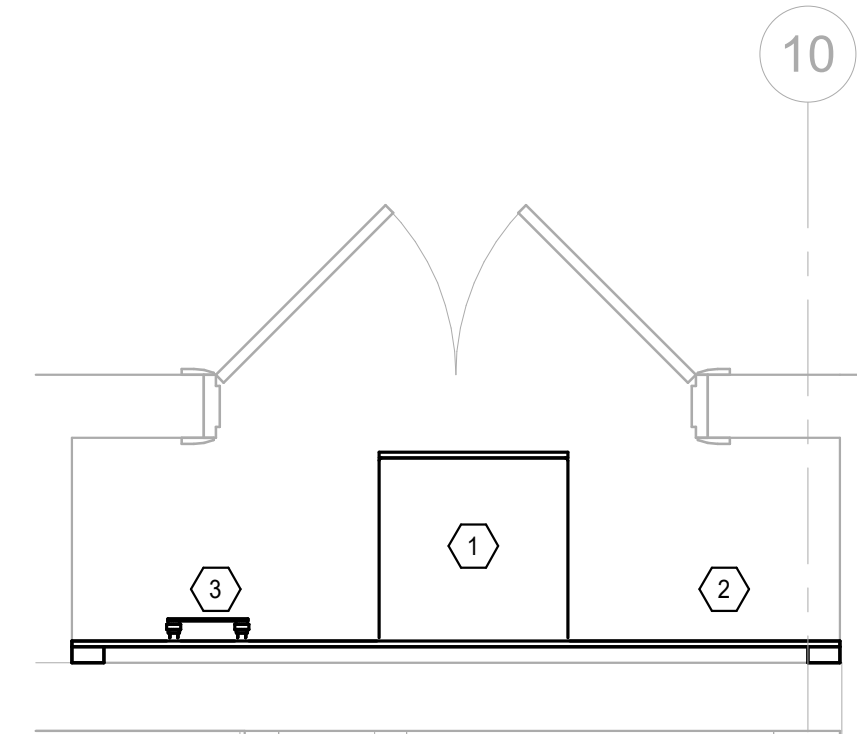
1 TECHNOLOGY PLAN - THIRD FLOOR
1/8" = 1'-0"

GENERAL NOTES:

1. DATA CONNECTIONS AND J-BOXES ARE SHOWN IN THEIR APPROXIMATE REQUIRED LOCATION. CONTRACTOR SHALL COORDINATE WITH OTHER TRADES FOR ACTUAL HEIGHTS AND LOCATIONS PRIOR TO INSTALLATION.
2. ANY CABLES INSTALLED IN CABLE TRAY SYSTEMS NOT SPECIFICALLY SHOWN ON THESE DRAWINGS SHALL BE APPROVED BY THE OWNER PRIOR TO INSTALLATIONS. COORDINATE CABLE TRAY INSTALLATION WITH MECHANICAL EQUIPMENT, ELECTRICAL EQUIPMENT, DUCTWORK, CONDUIT, PIPING, AND ALL OTHER TRADES PRIOR TO ORDERING AND INSTALLING.
3. INSTALL ALL EQUIPMENT IN ACCORDANCE WITH MANUFACTURERS WRITTEN INSTRUCTIONS.
4. REMOVE ALL BURRS AND SHARP EDGES.
5. FIRESTOP AT PENETRATIONS OF FIRE AND SMOKE BARRIERS.
6. ALL CABLE NOT IN CONDUIT AND LOCATED IN PLENUM SPACES SHALL BE PLENUM RATED, EXCLUDING CABLING WITH PLENUM RATED CEILING EQUIPMENT ENCLOSURES.
7. COORDINATE DEVICE HEIGHTS AND LOCATIONS WITH ARCHITECT AND ELECTRICAL DRAWINGS PRIOR TO INSTALLATION.

KEYED NOTES:

- * ALL KEYED NOTES MAY NOT BE USED.
- 1 PROVIDE WALL MOUNTED RACK.
 - 2 PROVIDE FIRE RATED TELECOM BACKBOARD.
 - 3 PROVIDE TELECOM GROUND BAR.
 - 4 PROVIDE WANDER GUARD ALERT SYSTEM ON DOOR WITH REMOTE SOUNDER.
 - 5 PROVIDE DELAYED EGRESS THROUGH JNL WANDERGUARD SYSTEM.
 - 6 PROVIDE SOUND BAR.
 - 7 PROVIDE DATA AND POWER ONLY.
 - 8 ACCESS CONTROL PANEL.



2 TECHNOLOGY PLAN - THIRD FLOOR - IT 325
1/2" = 1'-0"

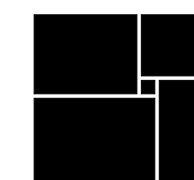


salasobrien.com
Atlanta
3200 Windy Hill Road, SE, Suite 200E
Atlanta, GA 30339

Project Number: 2024-03276

WATERFORD CAMPUS - ASSISTED LIVING MEMORY CARE BUILDING

601 UNIVERSE BLVD JUNO BEACH, FL 33048



THW
DESIGN

COPYRIGHT 2017
THOMPSON HANCOCK
WITTE & ASSOCIATES, INC.

2100 RiverEdge Parkway
Suite 900
Atlanta, GA 30328

PH: 770 916 2220
FAX: 770 916 2299

www.thw.com

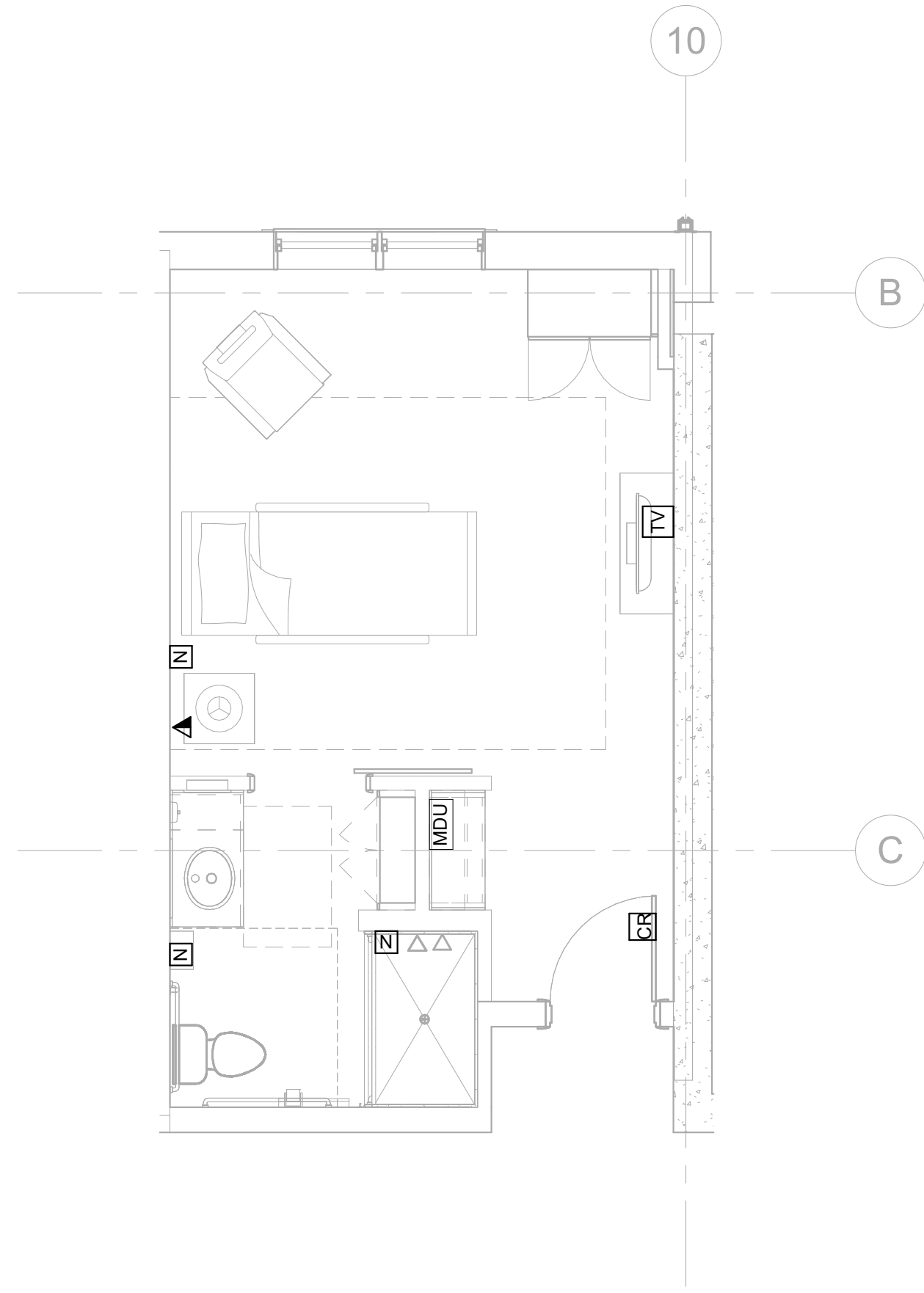
ISSUED FOR
CONSTRUCTION

Project No.: 2021009
Date: 12/01/2025

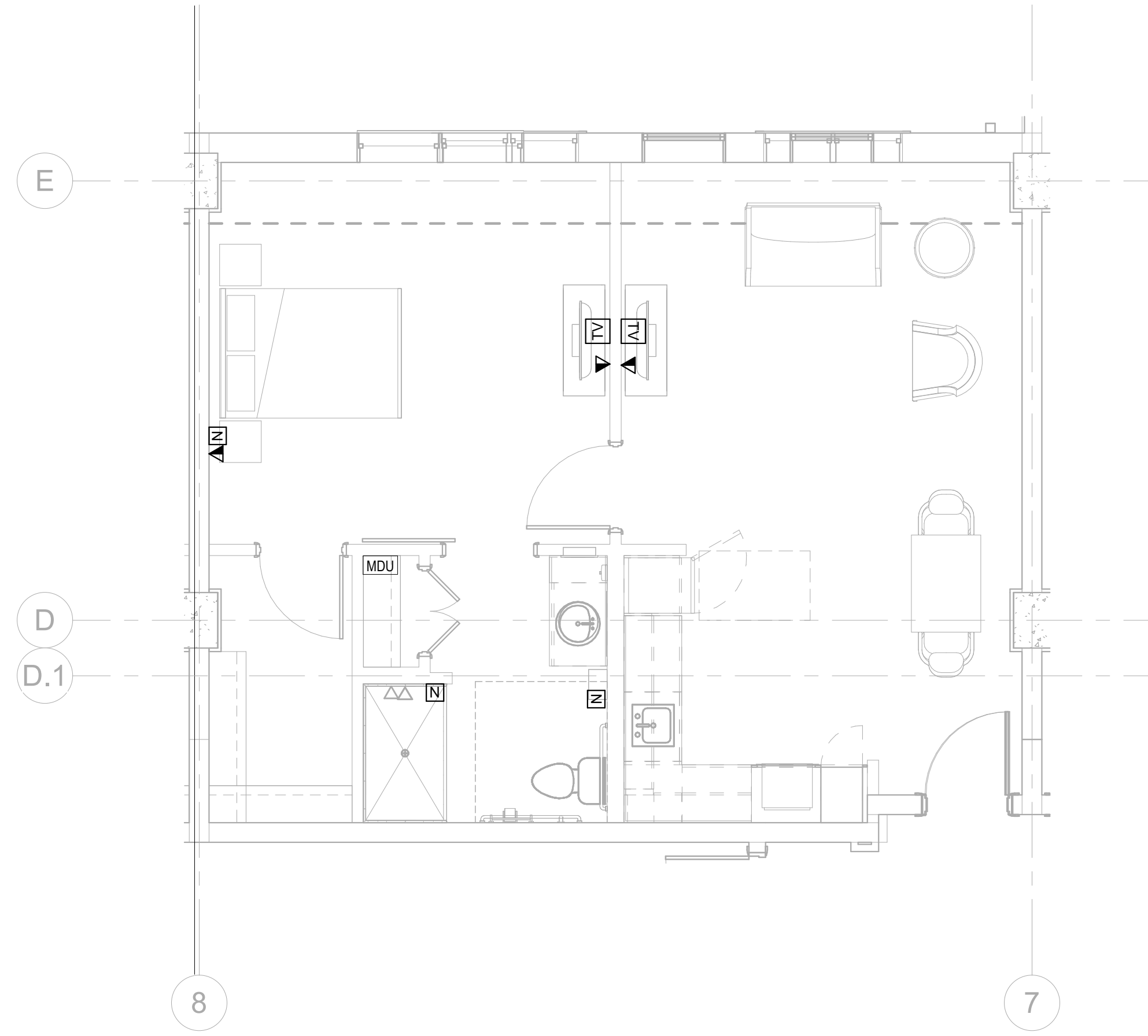
TECHNOLOGY
PLAN - THIRD
FLOOR

T-123

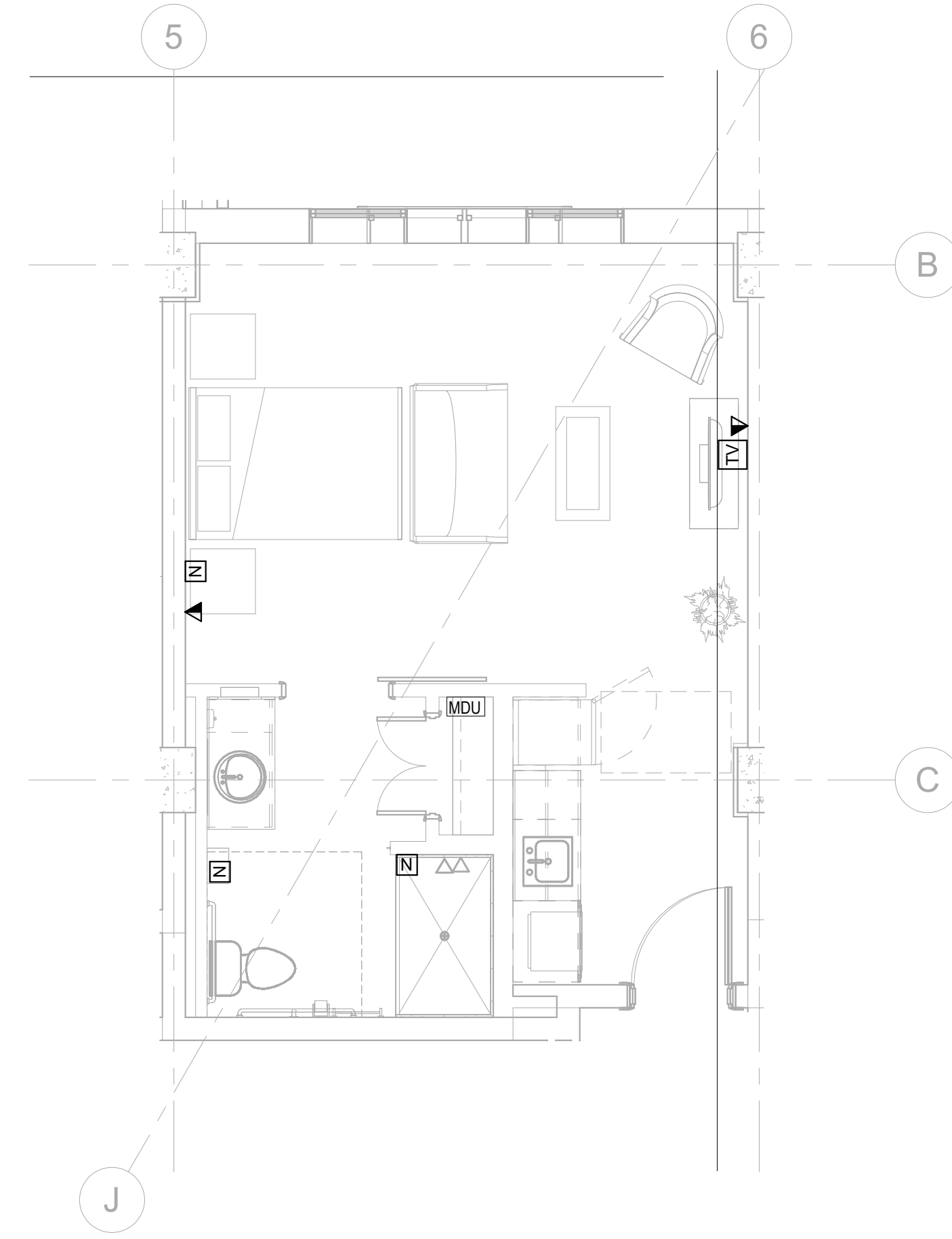
12/2/2025 9:34:04 AM



1 TECHNOLOGY PLAN - UNIT A - MC
T-300 / 1/4" = 1'-0"



2 TECHNOLOGY PLAN - UNIT B - AL
T-300 / 1/4" = 1'-0"



3 TECHNOLOGY PLAN - UNIT C - AL
T-300 / 1/4" = 1'-0"

GENERAL NOTES:

1. DATA CONNECTIONS AND J-BOXES ARE SHOWN IN THEIR APPROXIMATE REQUIRED LOCATION. CONTRACTOR SHALL COORDINATE WITH OTHER TRADES FOR ACTUAL HEIGHTS AND LOCATIONS PRIOR TO INSTALLATION.
2. ANY CABLES INSTALLED IN CABLE TRAY SYSTEMS NOT SPECIFICALLY SHOWN ON THESE DRAWINGS SHALL BE APPROVED BY THE OWNER PRIOR TO INSTALLATIONS. COORDINATE CABLE TRAY INSTALLATION WITH MECHANICAL EQUIPMENT, ELECTRICAL EQUIPMENT, DUCTWORK, CONDUIT, PIPING AND ALL OTHER TRADES PRIOR TO ORDERING AND INSTALLING.
3. INSTALL ALL EQUIPMENT IN ACCORDANCE WITH MANUFACTURES WRITTEN INSTRUCTIONS.
4. REMOVE ALL BURRS AND SHARP EDGES.
5. FIRESTOP AT PENETRATIONS OF FIRE AND SMOKE BARRIERS.
6. ALL CABLE NOT IN CONDUIT AND LOCATED IN PLENUM SPACES SHALL BE PLENUM RATED, EXCLUDING CABLING WITH PLENUM RATED CEILING EQUIPMENT ENCLOSURES.
7. COORDINATE DEVICE HEIGHTS AND LOCATIONS WITH ARCHITECT AND ELECTRICAL DRAWINGS PRIOR TO INSTALLATION.



salasobrien.com
Atlanta
3200 Windy Hill Road, SE, Suite 200E
Atlanta, GA 30339

Project Number: 2024-03276

**WATERFORD CAMPUS - ASSISTED
LIVING MEMORY CARE BUILDING**
601 UNIVERSE BLVD JUNO BEACH, FL 33048



THW
DESIGN

COPYRIGHT 2017
THOMPSON HANCOCK
WITTE & ASSOCIATES, INC.

2100 RiverEdge Parkway
Suite 900
Atlanta, GA 30328

PH: 770 916 2220
FAX: 770 916 2299

www.thw.com

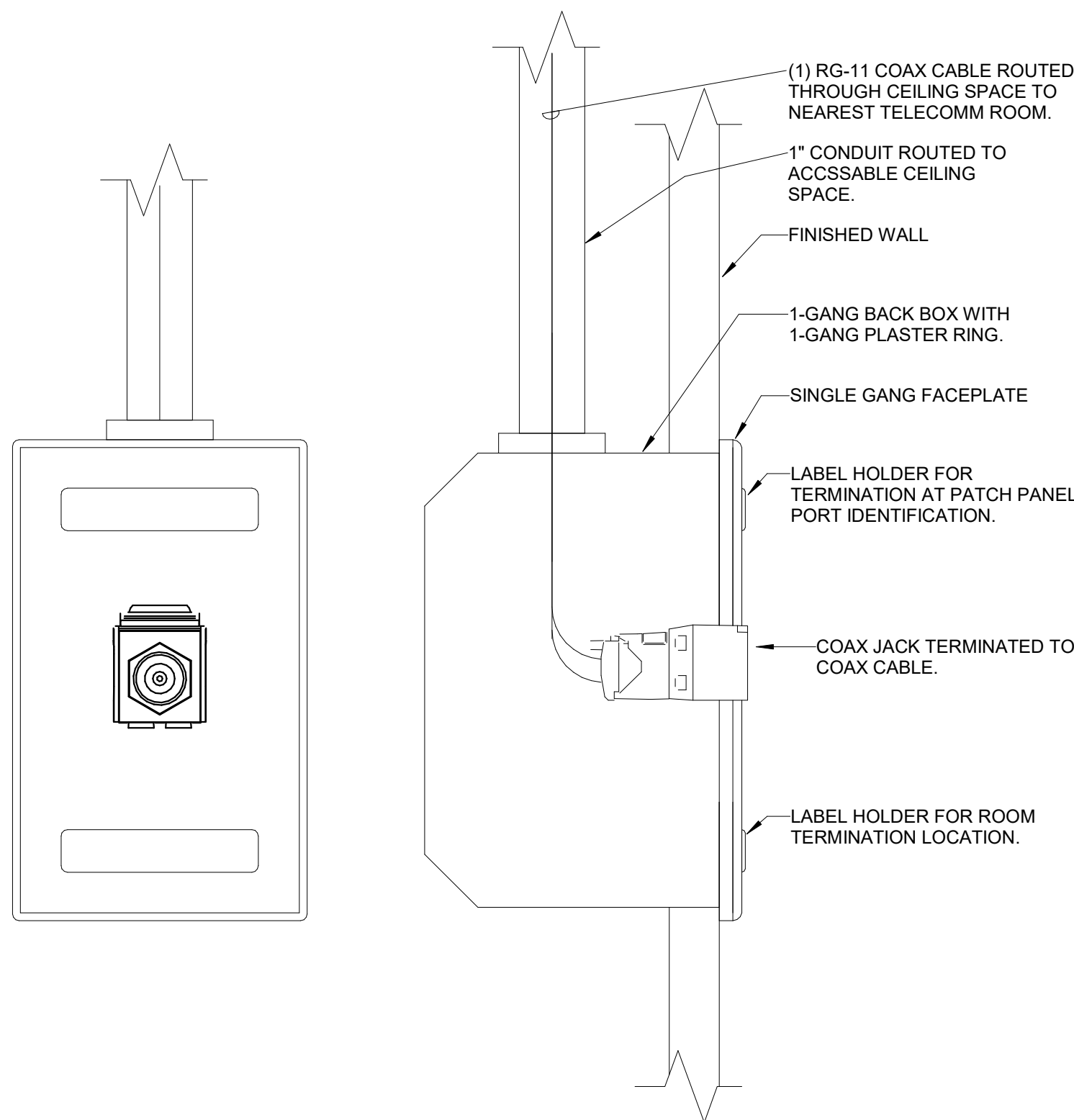
**ISSUED FOR
CONSTRUCTION**

Project No.: 2021009
Date: 12/01/2025

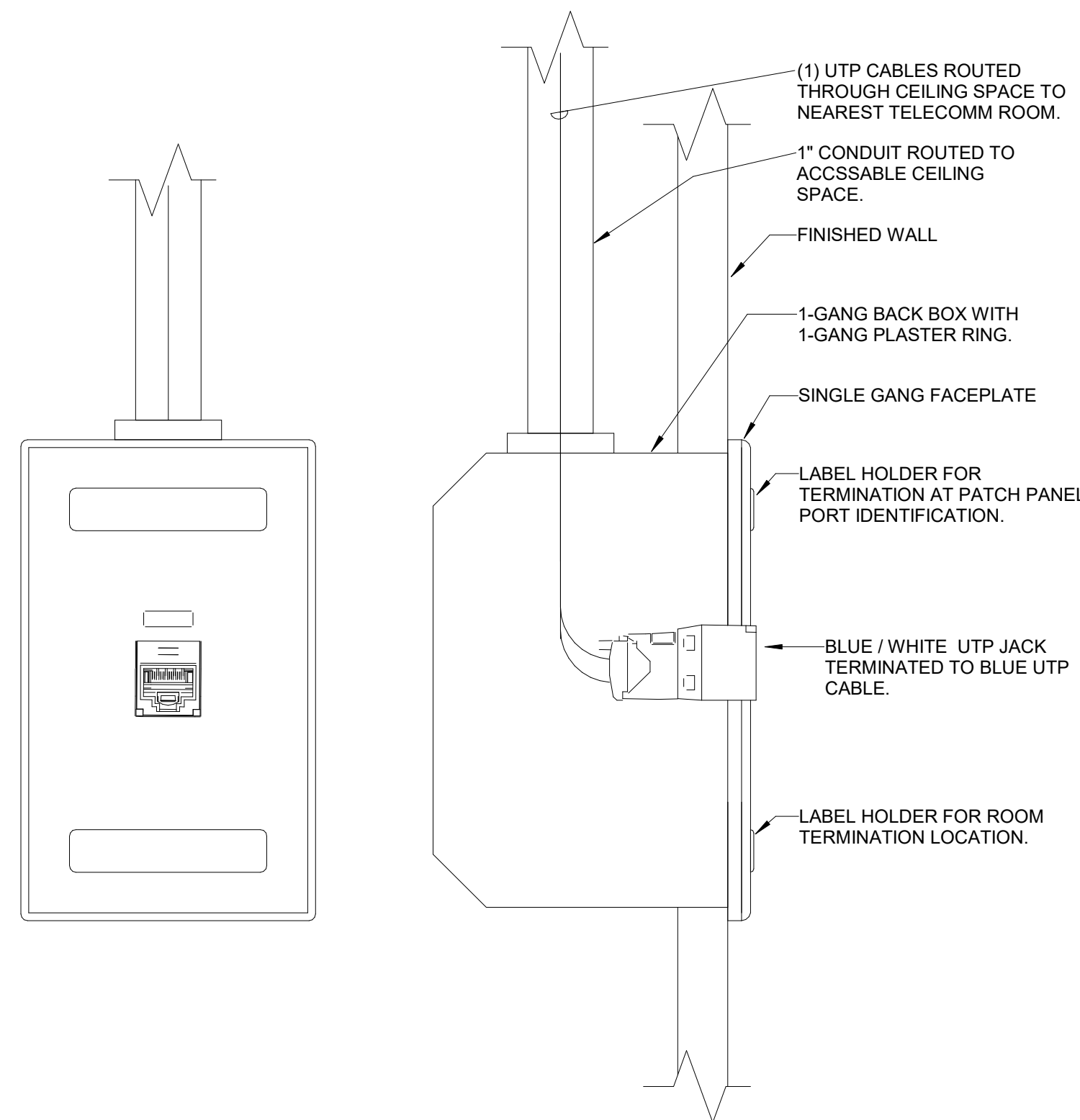
**TECHNOLOGY
UNIT PLANS**

T-300

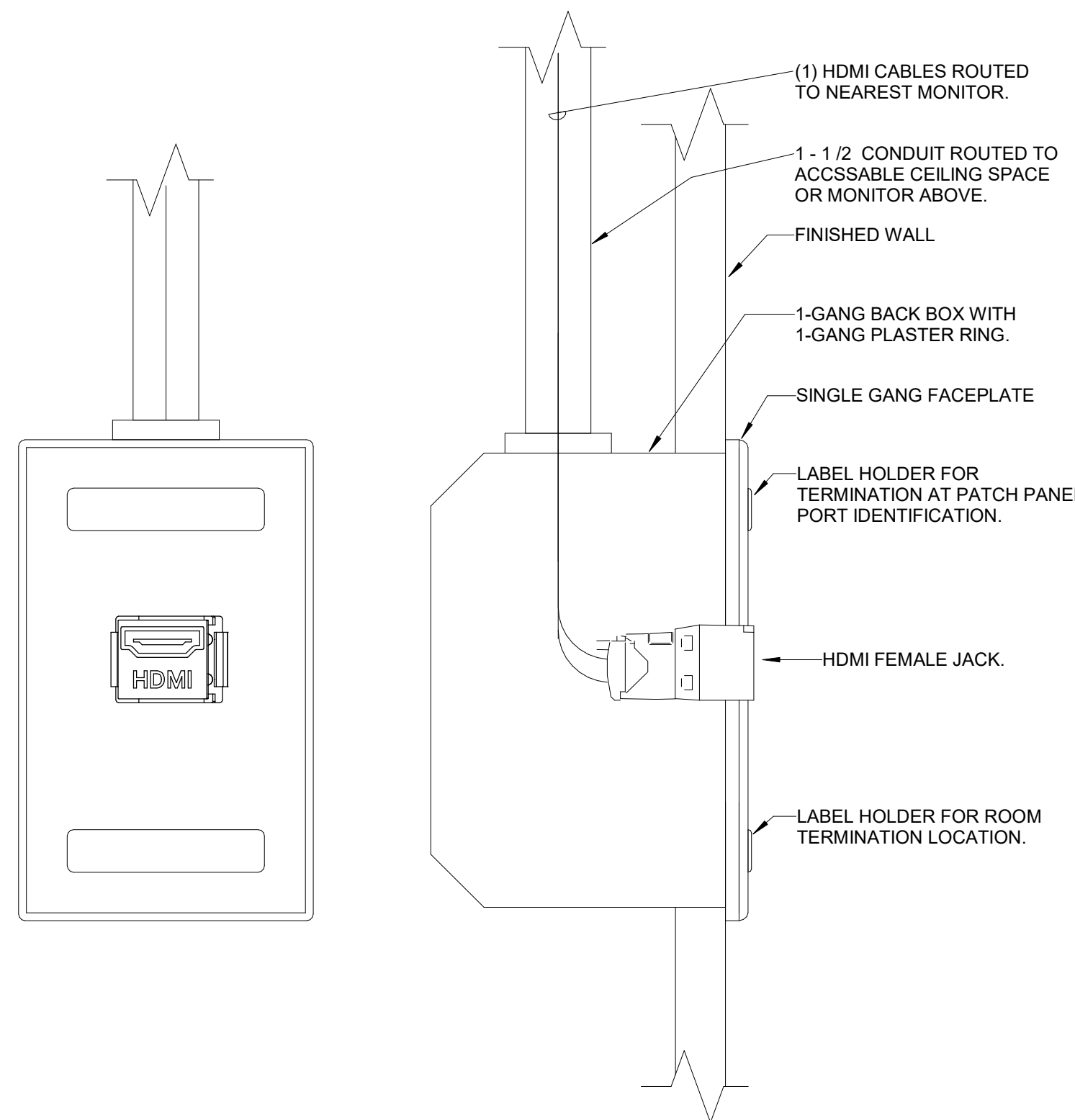
Autodesk Docs://MCP - Stage 2 - MC_AL_LI/2024-03276 - MEP - MC-AL.rvt



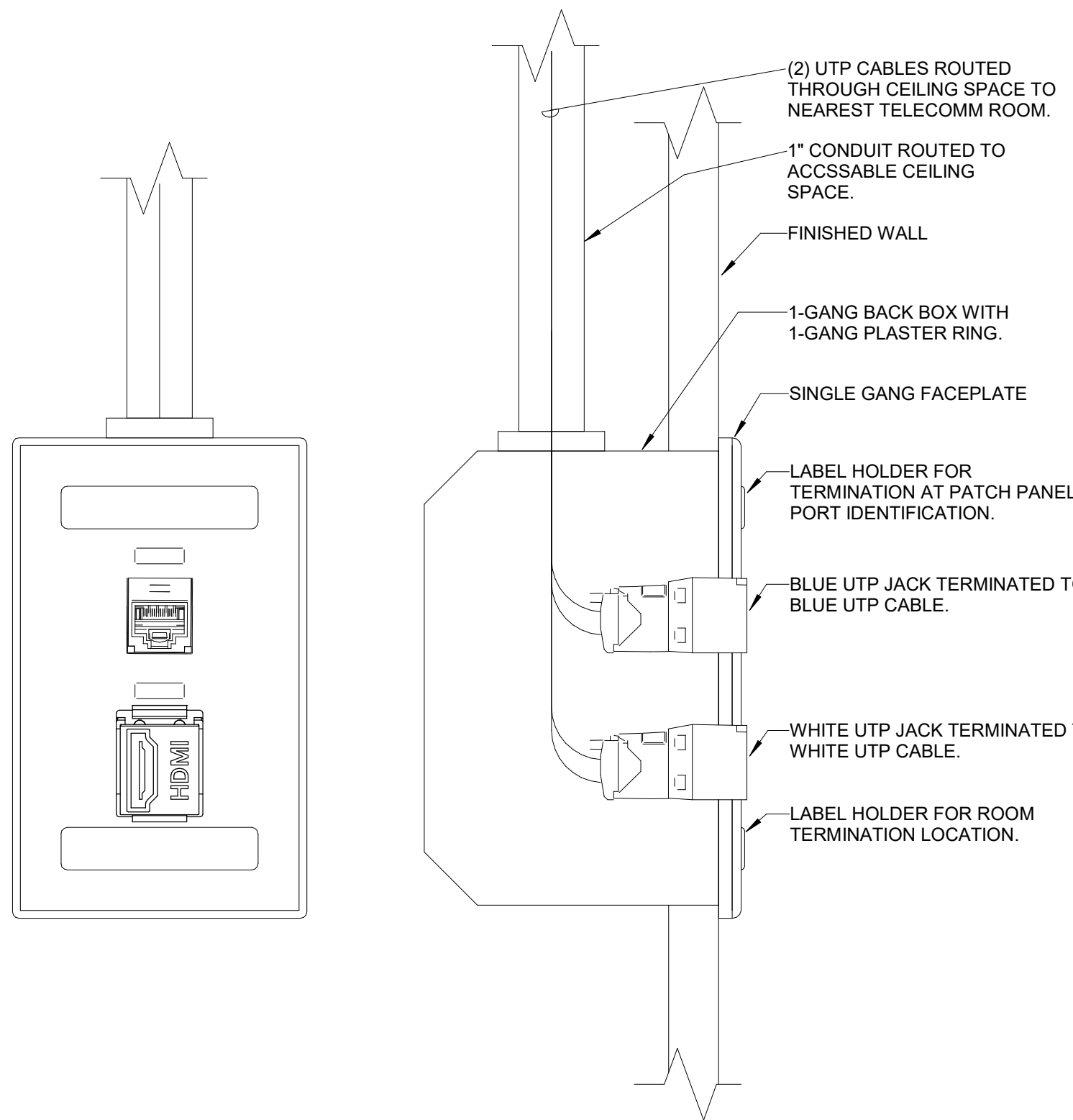
1 1 PORT COAX OUTLET
12" = 1'-0"



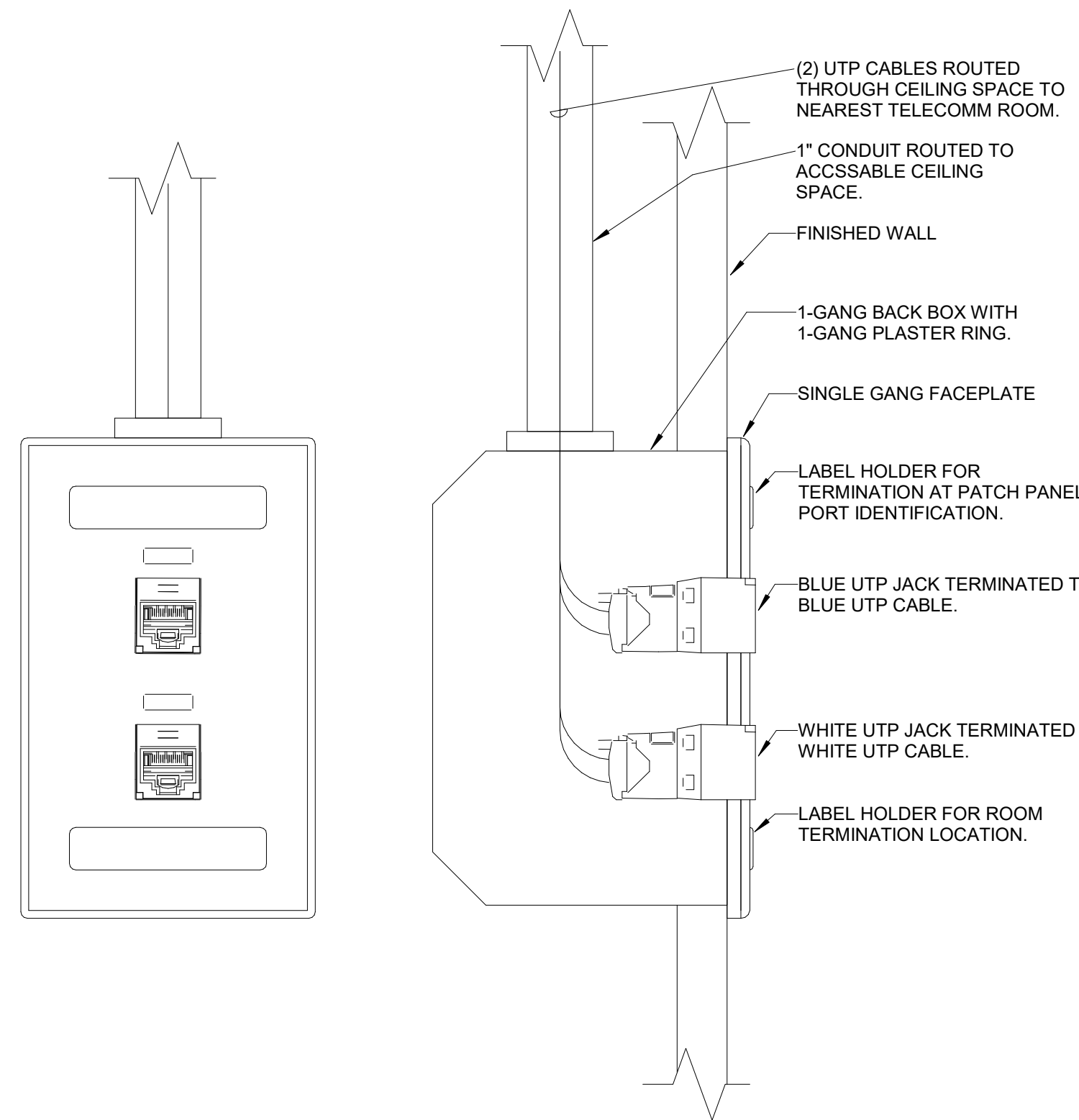
2 1 PORT DATA / VOICE OUTLET
12" = 1'-0"



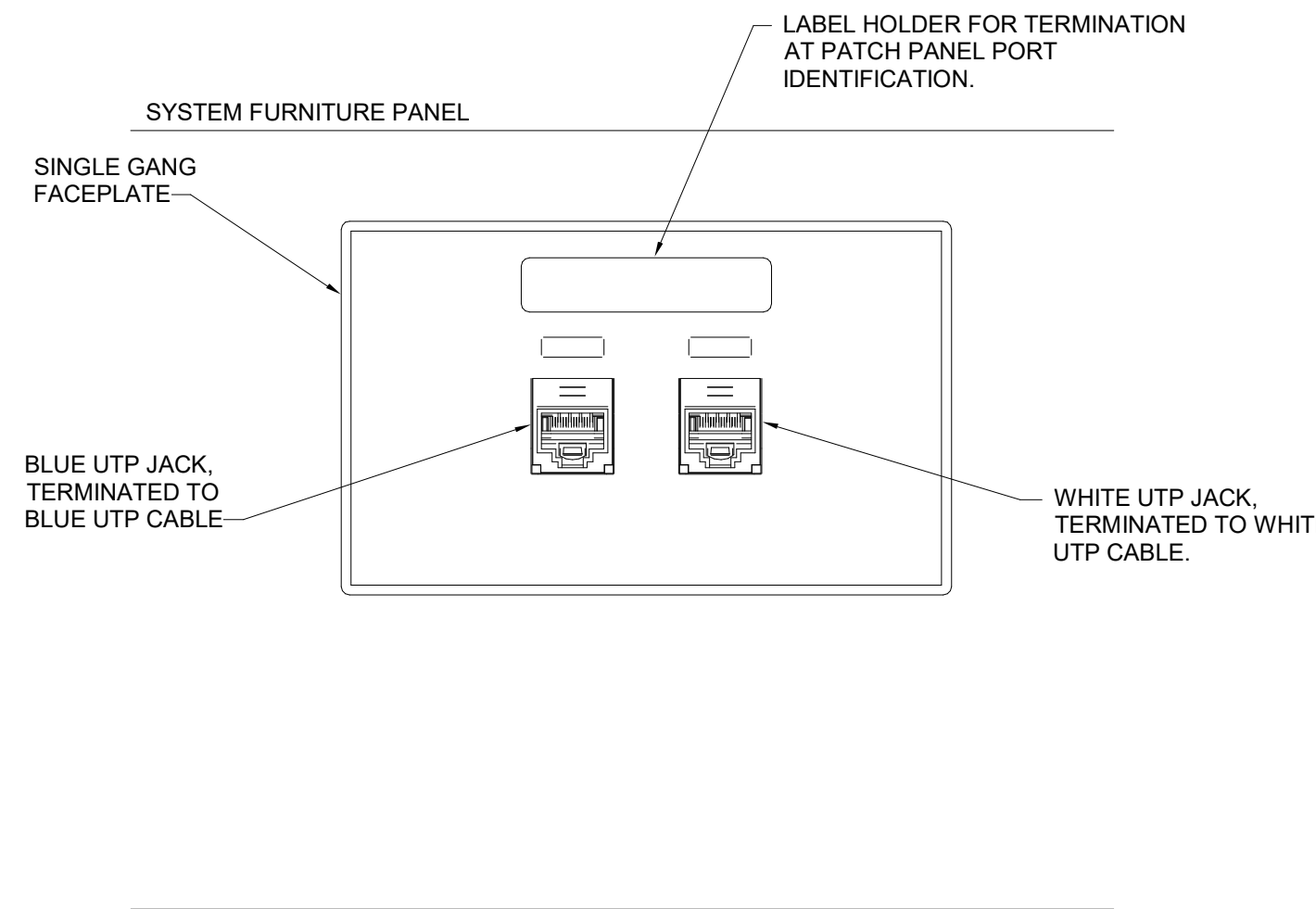
3 1 PORT HDMI OUTLET
12" = 1'-0"



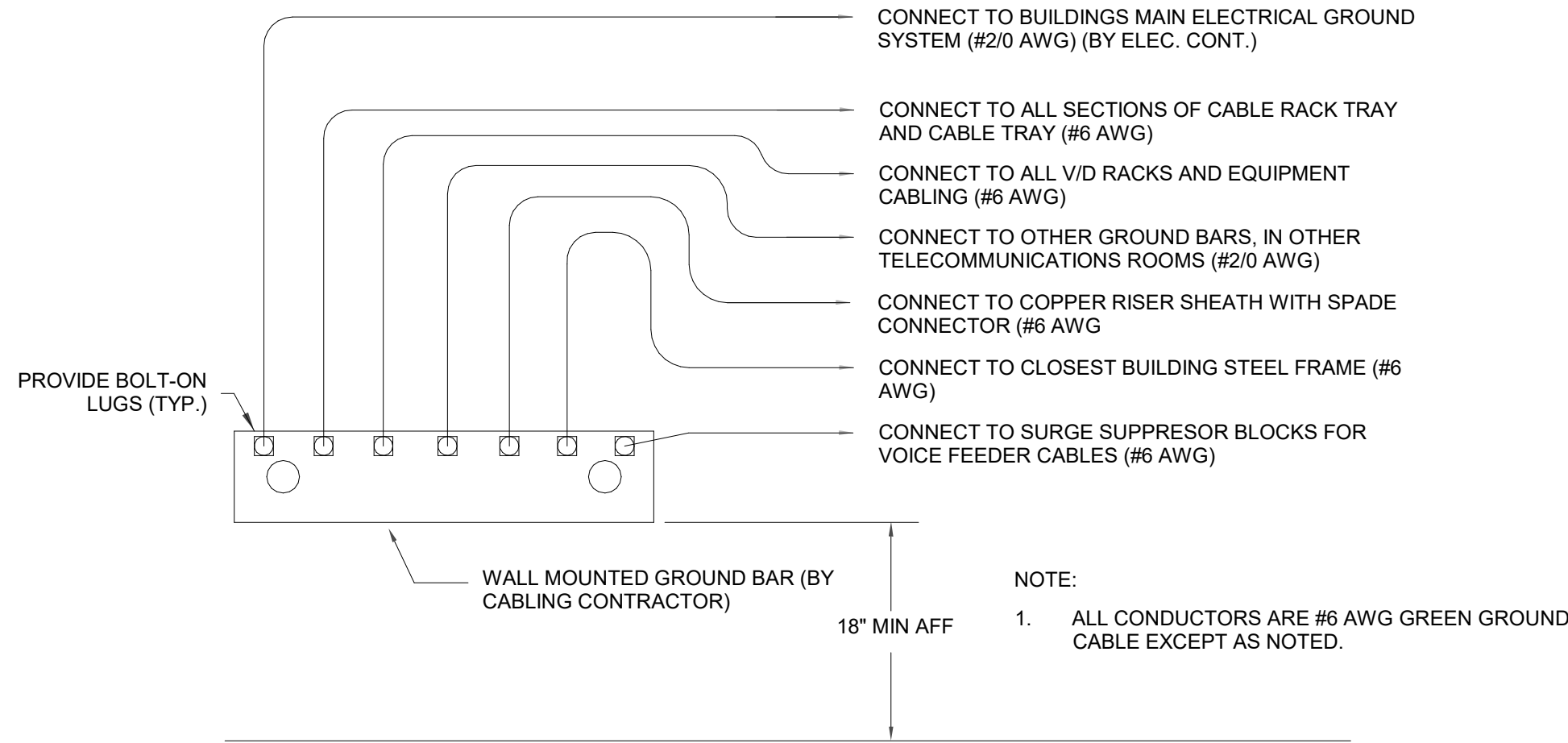
4 2 PORT DATA / HDMI OUTLET
12" = 1'-0"



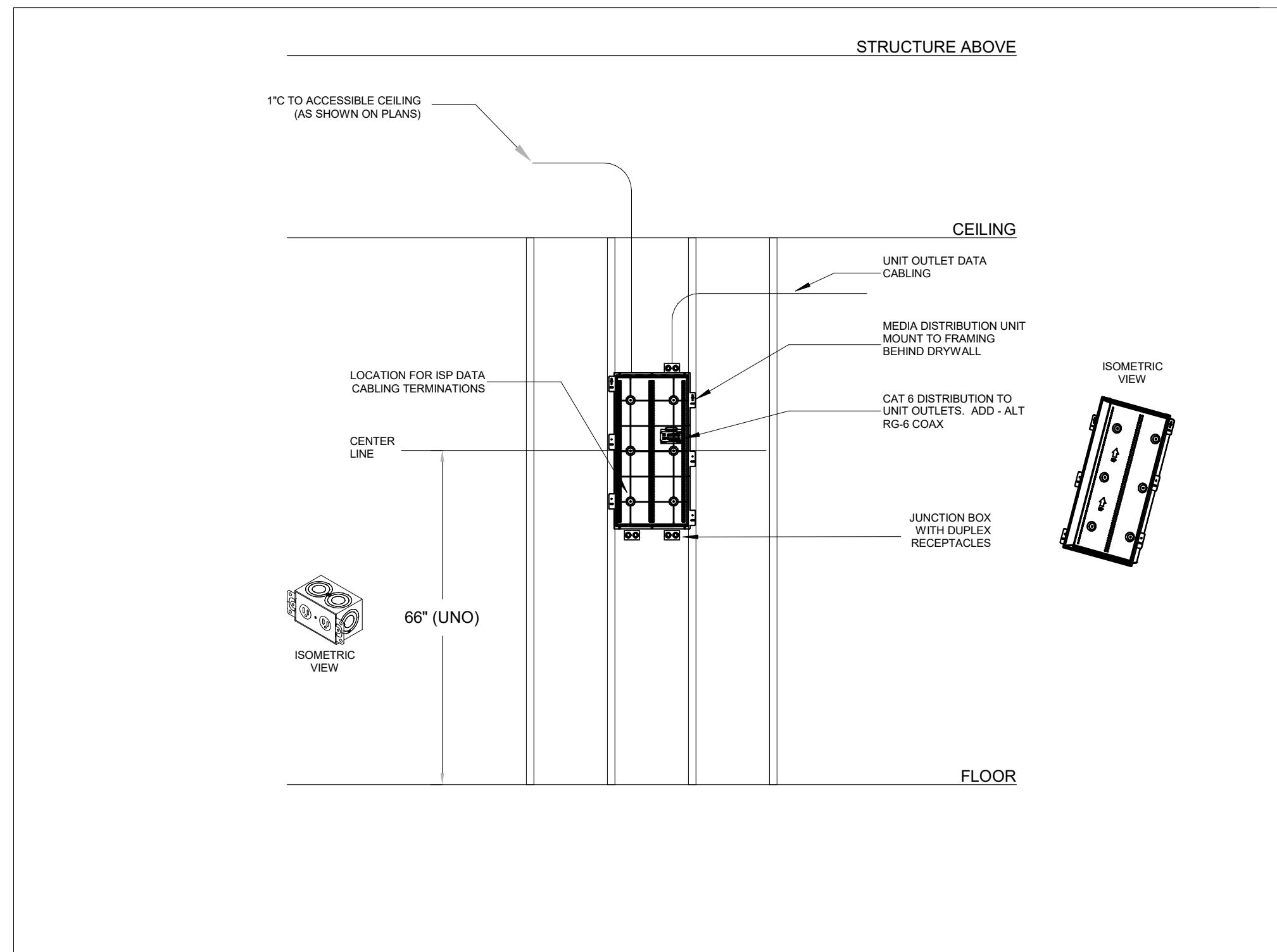
5 2 PORT DATA / VOICE OUTLET
12" = 1'-0"



6 TYPICAL DATA/VIDEO OUTLET IN FURNITURE
12" = 1'-0"



7 GROUNDING DETAIL
12" = 1'-0"



8 TYPICAL MEDIA DISTRIBUTION UNIT
1/2" = 1'-0"

Salas O'Brien

salasobrien.com
Atlanta
3200 Windy Hill Road, SE, Suite 200E
Atlanta, GA 30339

Project Number: 2024-03276

WATERFORD CAMPUS - ASSISTED
LIVING MEMORY CARE BUILDING
601 UNIVERSE BLVD JUNO BEACH, FL 33048

THW
DESIGN

COPYRIGHT 2017
THOMPSON HANCOCK
WITTE & ASSOCIATES, INC.

2100 RiverEdge Parkway
Suite 900
Atlanta, GA 30328

PH: 770 916 2220
FAX: 770 916 2299

www.thw.com

ISSUED FOR
CONSTRUCTION

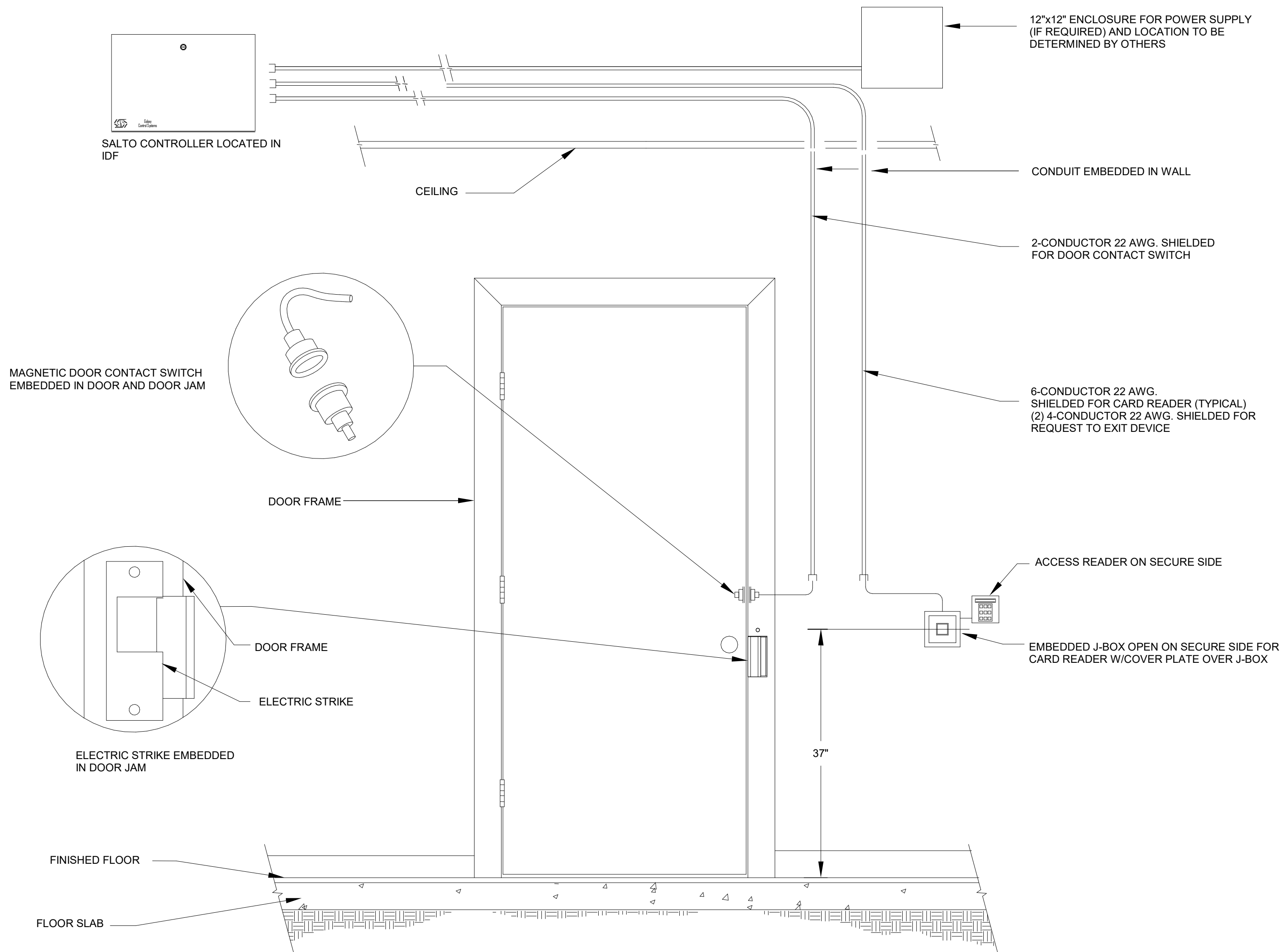
Project No.: 2021009
Date: 12/01/2025

TECHNOLOGY
DETAILS

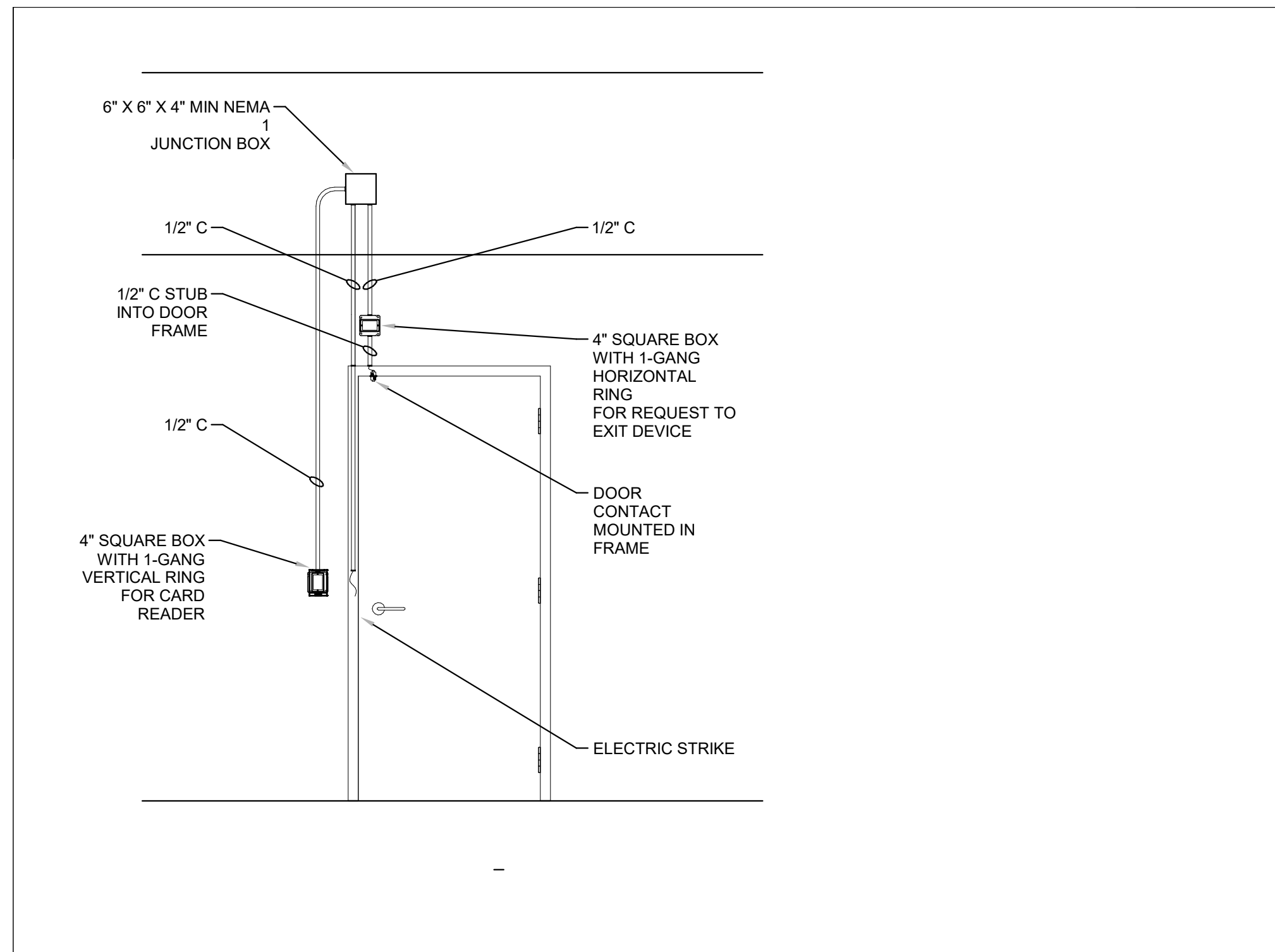
T-600

12/2/2025 9:34:06 AM

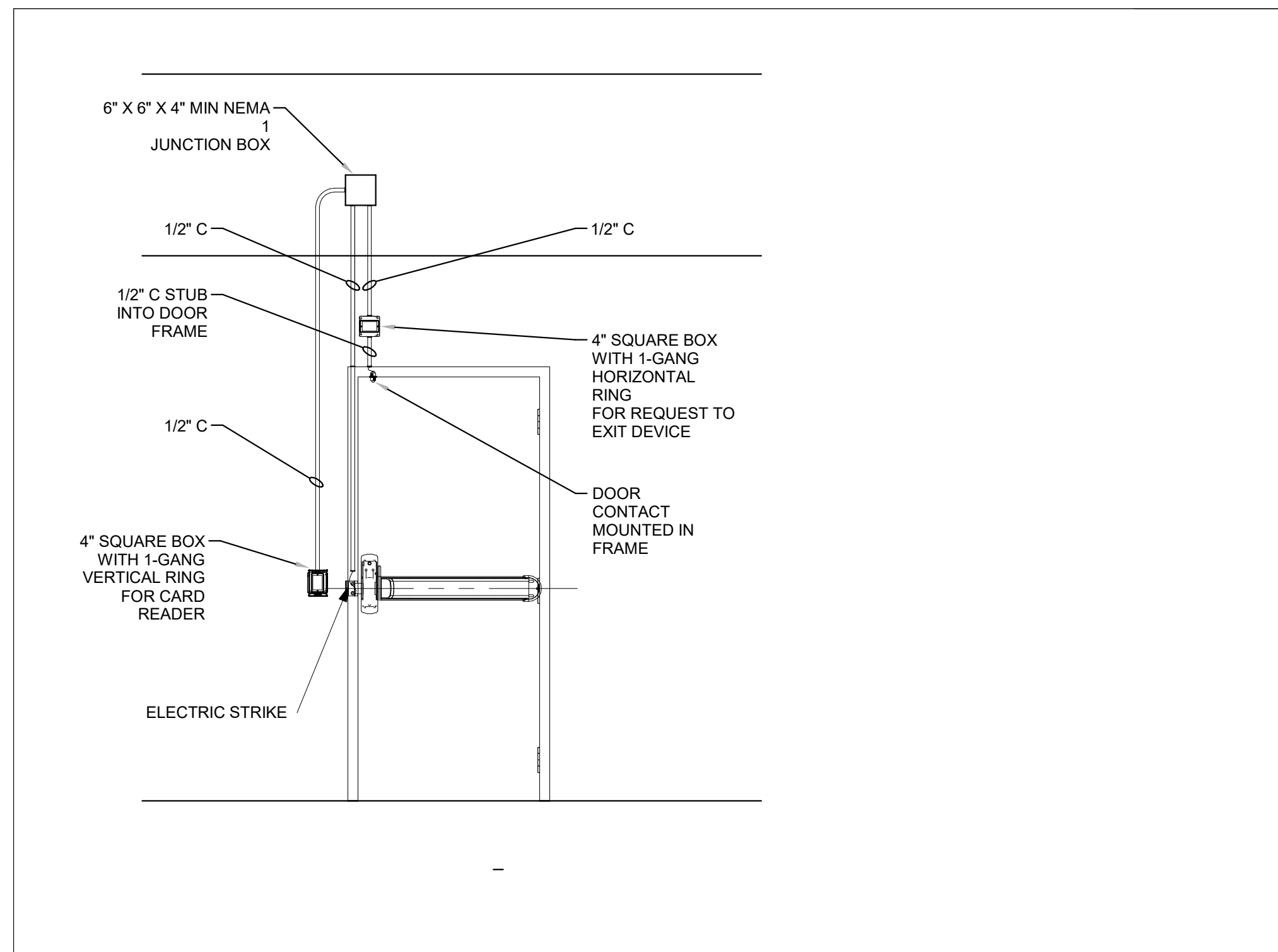
Autodesk Docs://MCP - Stage 2 - MC_AL_L/2024-03276 - MEP - MC-AL.rvt



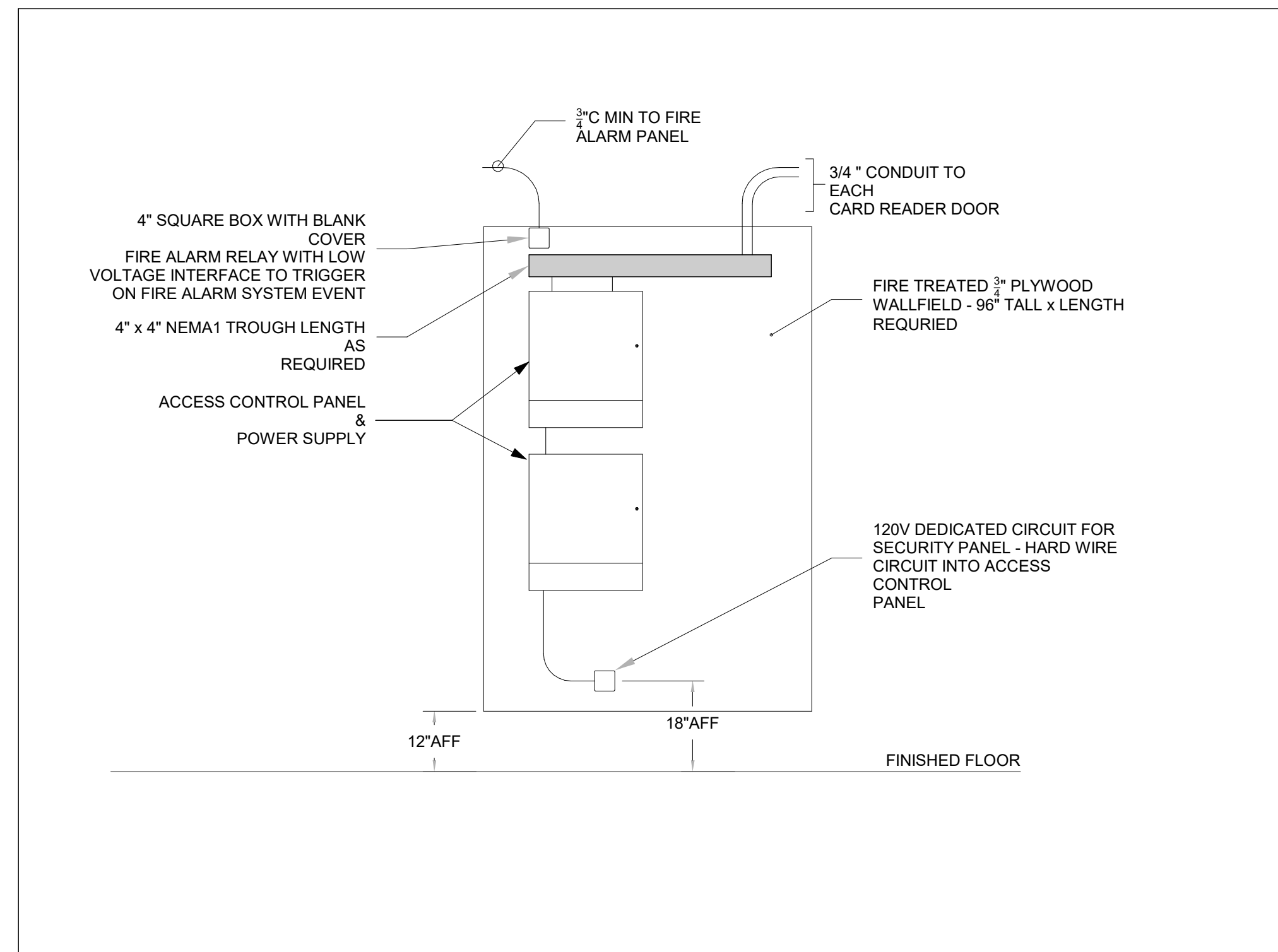
1 TYPICAL ACCESS CONTROL SINGLE DOOR (STRIKE)
12" = 1'-0"



2 TYPICAL CARD READER DOOR STRIKE
1/2" = 1'-0"



3 TYPICAL CARD READER DOOR STRIKE AND PUSH BAR
1/2" = 1'-0"



4 ACCESS CONTROL PANEL ELEVATION
1/2" = 1'-0"

Salas O'Brien

salasobrien.com
Atlanta
3200 Windy Hill Road, SE, Suite 200E
Atlanta, GA 30339

Project Number: 2024-03276

WATERFORD CAMPUS - ASSISTED
LIVING MEMORY CARE BUILDING
601 UNIVERSE BLVD JUNO BEACH, FL 33048



THW
DESIGN

COPYRIGHT 2017
THOMPSON HANCOCK
WITTE & ASSOCIATES, INC.

2100 RiverEdge Parkway
Suite 900
Atlanta, GA 30328

PH: 770 916 2220
FAX: 770 916 2299

www.thw.com

ISSUED FOR
CONSTRUCTION

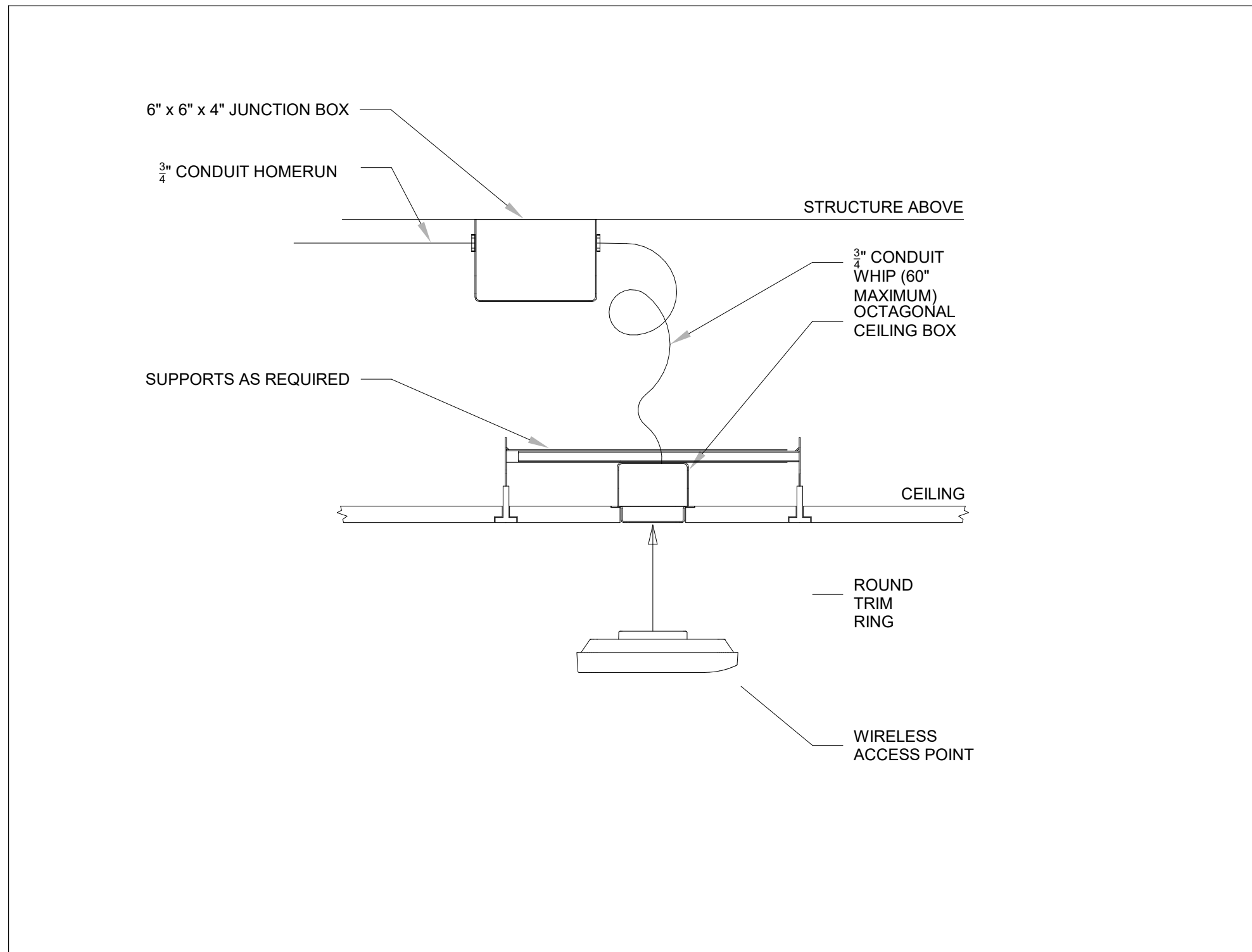
Project No.: 2021009
Date: 12/01/2025

TECHNOLOGY
DETAILS

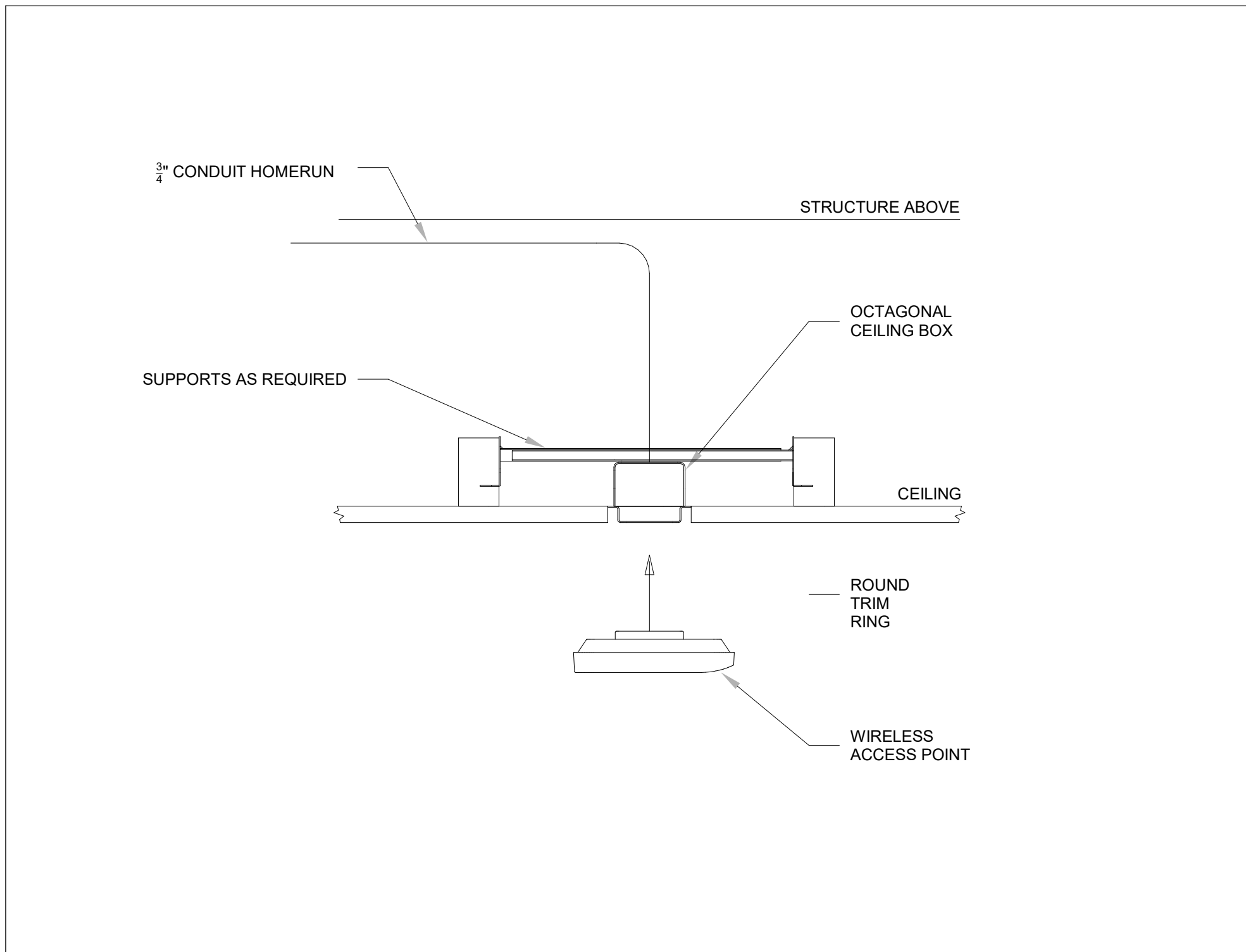
T-601

12/2/2025 9:34:07 AM

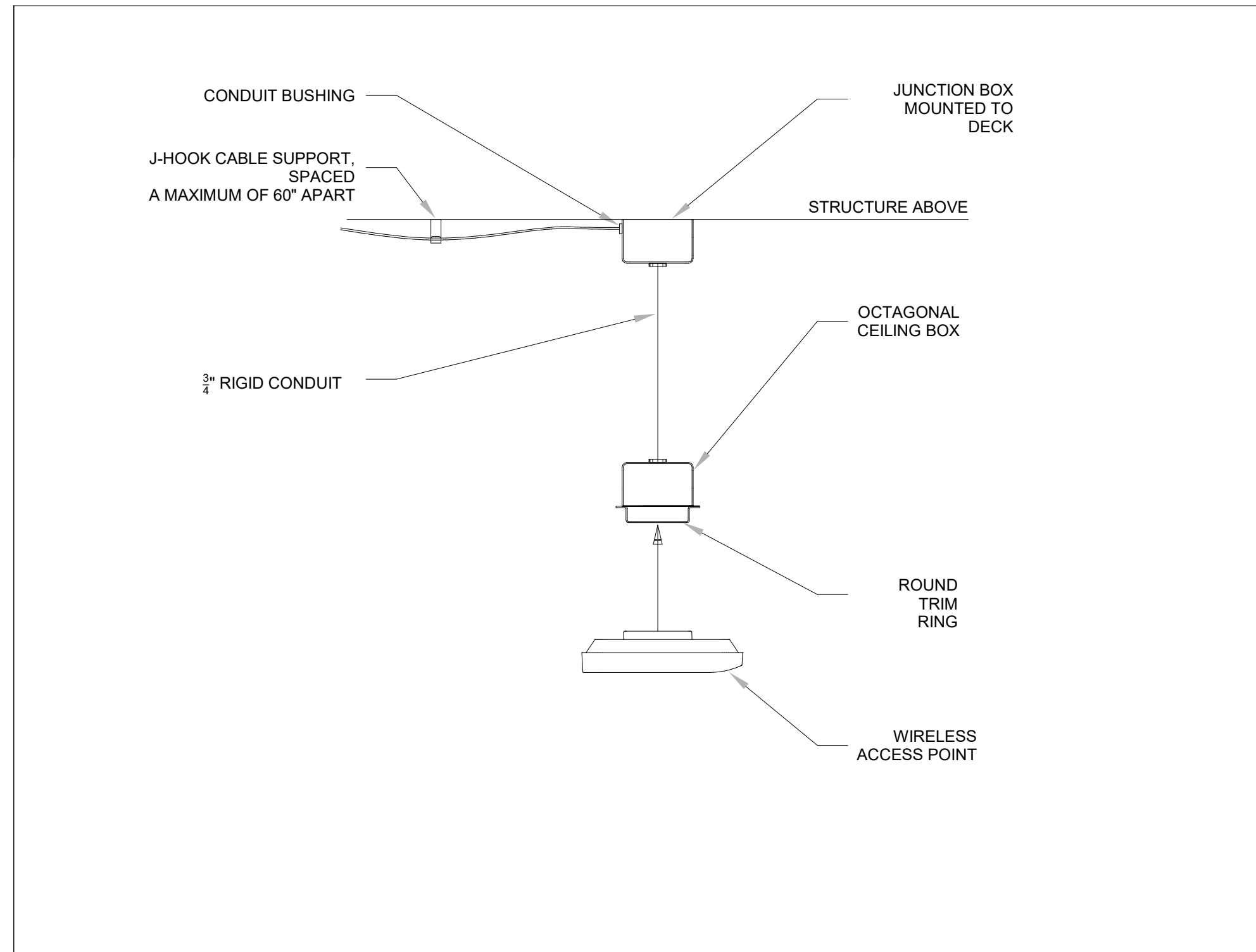
Autodesk Docs://MCP - Stage 2 - MC_AL_L/2024-03276 - MEP - MC-AL.rvt



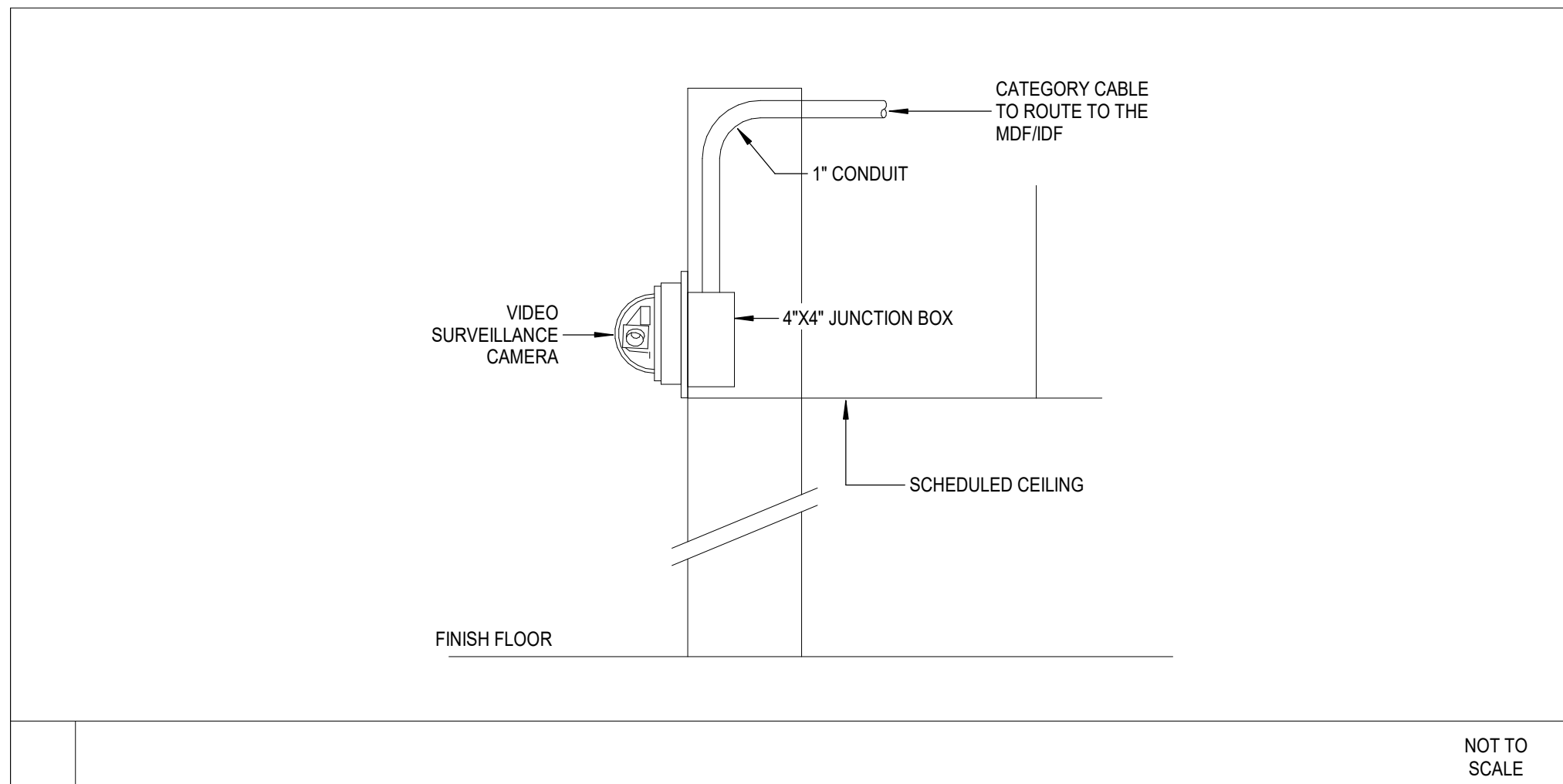
1
T-602
TYPICAL WAP MOUNTING - DROP CEILING
1/2" = 1'-0"



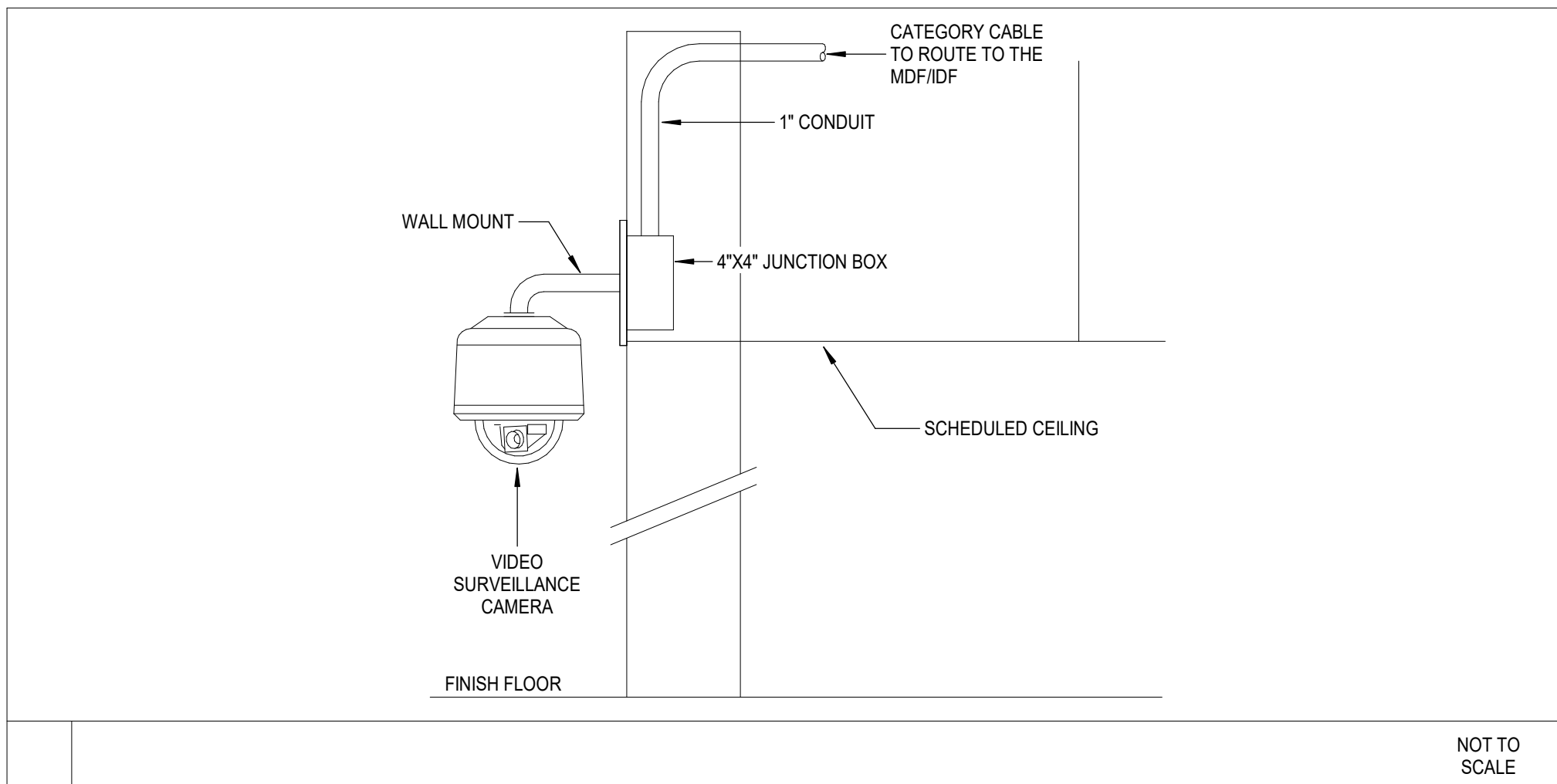
2
T-602
TYPICAL WAP MOUNTING - HARD CEILING
1/2" = 1'-0"



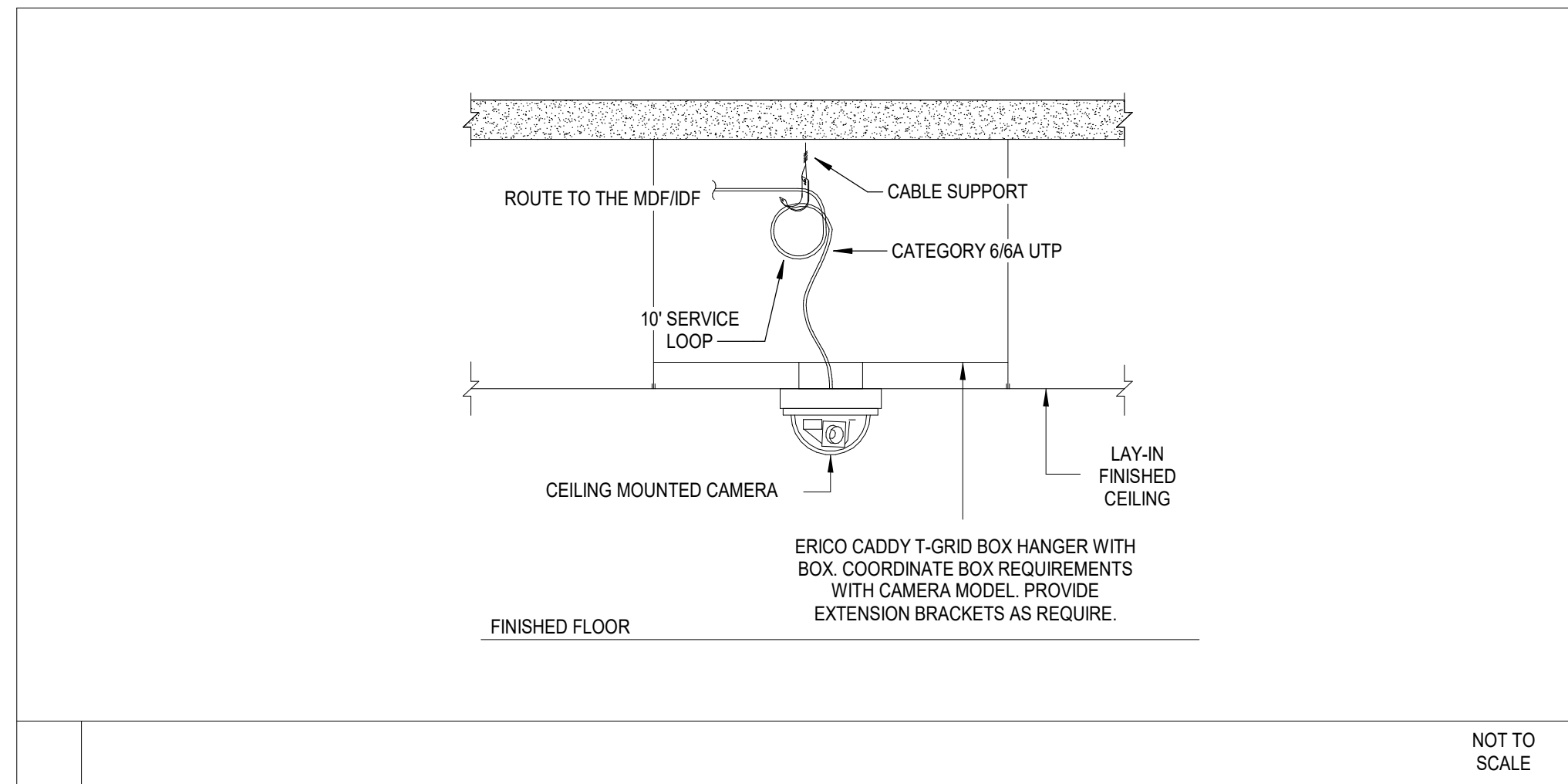
3
T-602
TYPICAL WAP MOUNTING - OPEN CEILING
1/2" = 1'-0"



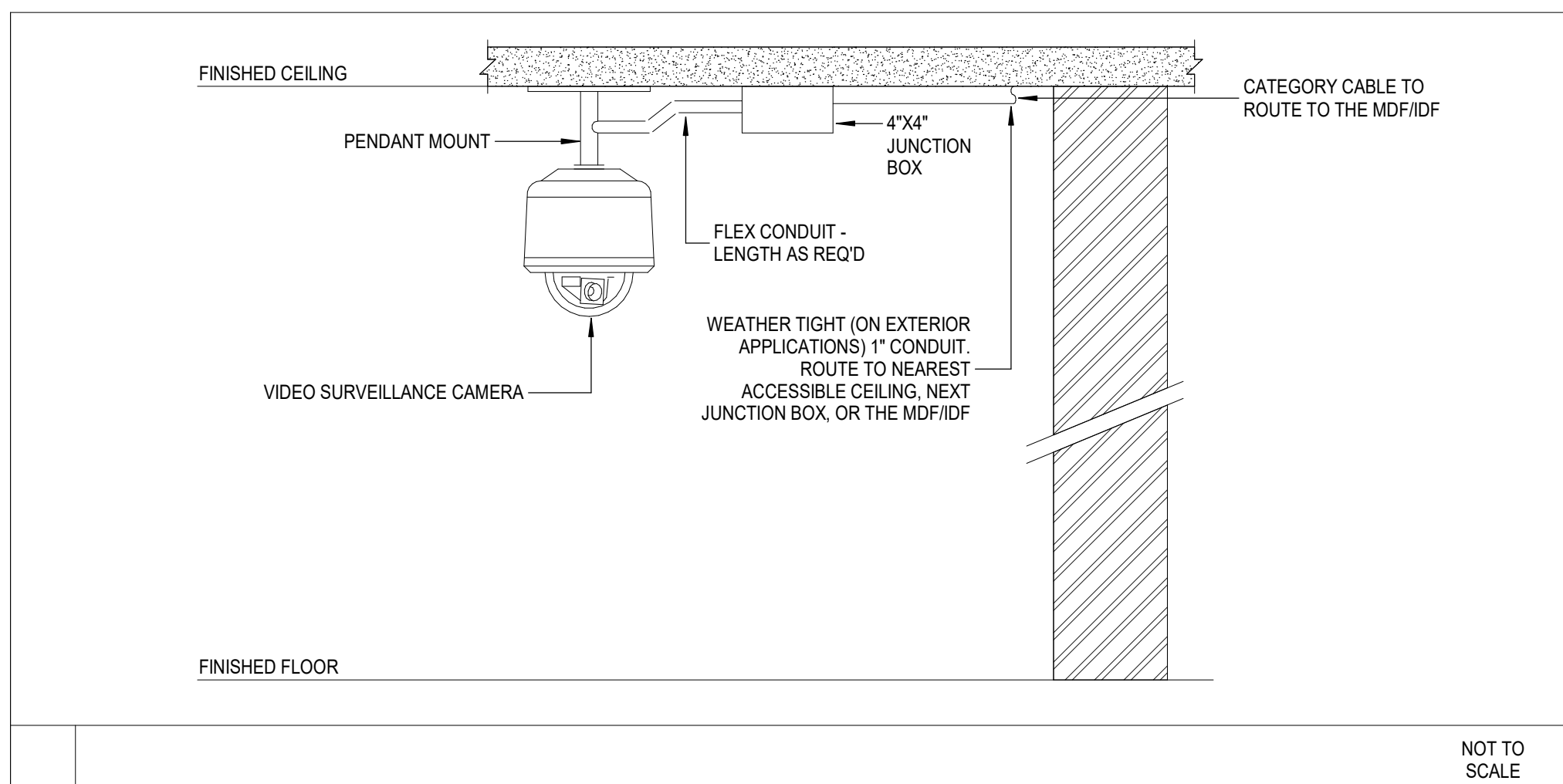
4
T-602
INTERIOR WALL MOUNT CAMERA-VERTICAL
12" = 1'-0"



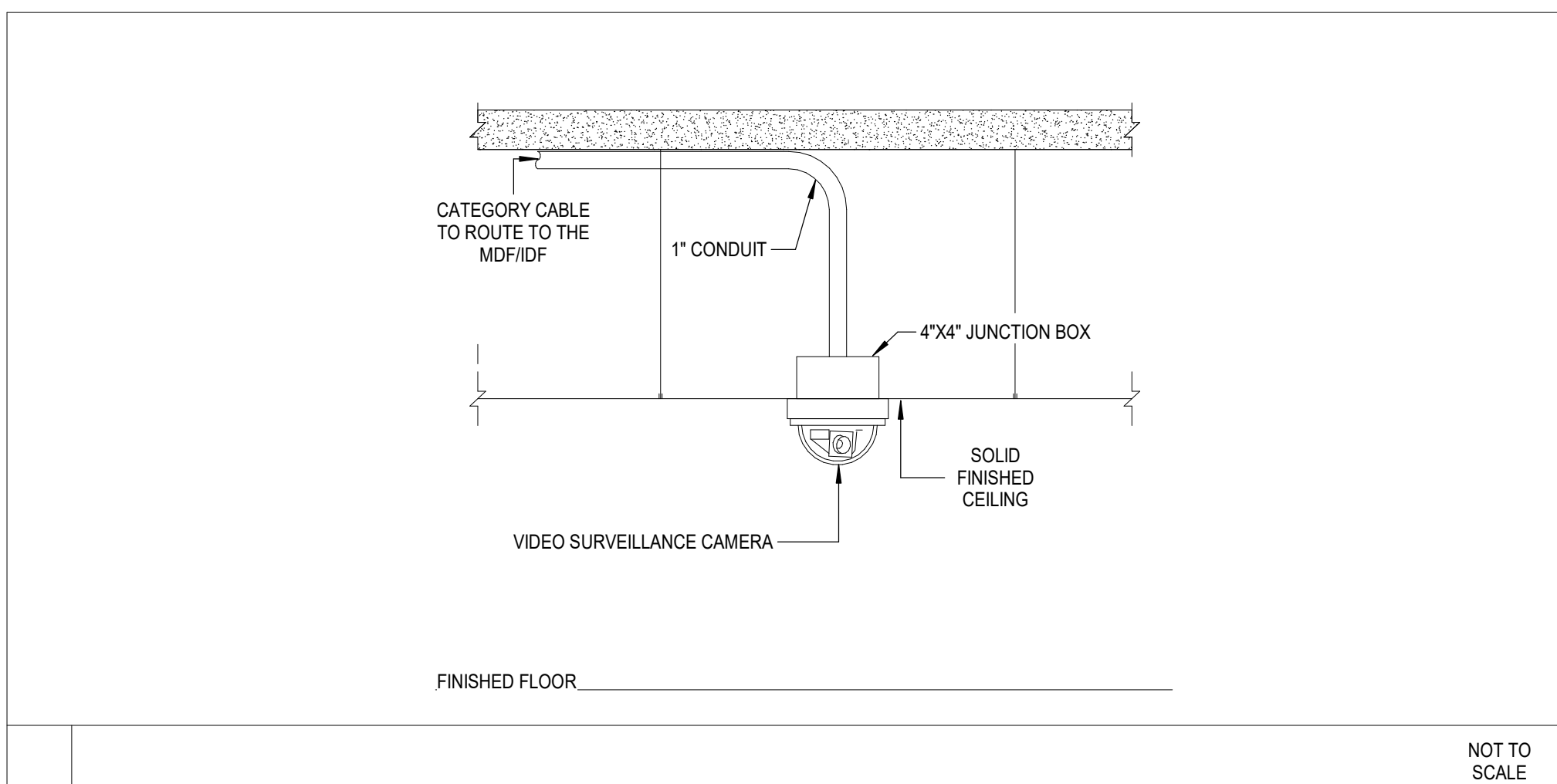
5
T-602
INTERIOR WALL MOUNTED DOME CAMERA
12" = 1'-0"



6
T-602
INTERIOR LAY-IN CEILING MOUNTED CAMERA
12" = 1'-0"



7
T-602
EXT./INT. PENDANT MOUNTED DOME CAMERA
12" = 1'-0"



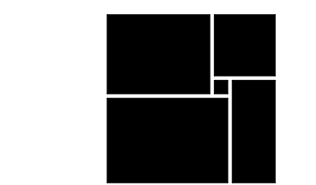
8
T-602
EXTERIOR/INTERIOR SOLID CEILING MOUNT CAMERA
12" = 1'-0"

Salas O'Brien

salasobrien.com
Atlanta
3200 Windy Hill Road, SE, Suite 200E
Atlanta, GA 30339

Project Number: 2024-03276

**WATERFORD CAMPUS - ASSISTED
LIVING MEMORY CARE BUILDING**
601 UNIVERSE BLVD JUNO BEACH, FL 33048



THW
DESIGN

COPYRIGHT 2017
THOMPSON HANCOCK
WITTE & ASSOCIATES, INC.

2100 RiverEdge Parkway
Suite 900
Atlanta, GA 30328

PH: 770 916 2220
FAX: 770 916 2299

www.thw.com

**ISSUED FOR
CONSTRUCTION**

Project No.: 2021009
Date: 12/01/2025

**TECHNOLOGY
DETAILS**

T-602

12/2/2025 9:34:07 AM



WATERFORD CAMPUS - ASSISTED
LIVING MEMORY CARE BUILDING
601 UNIVERSE BLVD JUNO BEACH, FL 33048



T-700

