

1 FOUNDATION PLAN
1S-301 1S-201 SCALE: 3/32" = 1'-0"

COLUMN SCHEDULE		
TYPE	SIZE	REINFORCEMENT
C1	HSS 6X6X1/4"	NONE
C2	HSS 6X6X3/8"	NONE
C2	RC-7-5/8"X15-5/8"	RC-COLUMN - 7-5/8 X15-5/8 W/ 4 - #5 VERTICAL & #3 TIES AT 8" O.C
C3	RC-7-5/8X12"	RC-COLUMN - 7-5/8 X12-5/8 W/ 4 - #5 VERTICAL & #3 TIES AT 8" O.C

FOUNDATION SCHEDULE		
TYPE	SIZE	REINFORCEMENT
WF36	3'X1'XCONT.	(4) - #5 CONT. & #5 TRANSVERSE @32" O.C
TS12	1'X1'XCONT.	(2) - #5 CONT.
F7.0	7'X7'X18"	(9) - #5 EACH WAY, TOP & BOTTOM.
F8.0	8'X8'X18"	(11) - #5 EACH WAY, TOP & BOTTOM.

NOTE:
1. TOP OF FOUNDATION IS AT -2'-0" (2' BELOW TOP OF SLAB).
2. #5 VERTICAL BARS @24 O.C IN FULLY GROUTED CELLS.

NOTES:
1. CONTRACTOR SHALL COORDINATE WITH ALL TRADES FOR ITEMS RECESSED OR EMBEDDED IN MASONRY WALLS. DO NOT PLACE EMBEDDED ITEMS IN GROUT FILLED CELLS OR SOLID CAST CONCRETE BEAMS AND COLUMNS.
2. CONDUIT MAY BE PLACED ON FOUNDATIONS OR INSTALLED TO PENETRATE VERTICALLY THROUGH FOUNDATIONS. CONDUITS SHALL BE SEPARATED BY A MINIMUM OF THREE CONDUIT DIAMETERS.
3. VERTICAL PENETRATIONS THROUGH A CONCRETE BEAM OR REINFORCED MASONRY ARE PERMITTED. CONDUITS SHALL BE SEPARATED BY A MINIMUM OF THREE CONDUITS DIAMETERS. REINFORCING MAY NOT BE DISPLACED BY CONDUITS.
4. CONTRACTOR SHALL COORDINATE WITH LIGHTNING PROTECTION CONTRACTOR FOR LOCATION AND PLACEMENT OF LIGHTNING PROTECTION CABLES IN CONDUIT. DESIGN INTENT IS FOR LIGHTNING PROTECTION CABLING FEED THROUGH CONCRETE MASONRY UNITS. DO NOT PLACE LIGHTNING PROTECTION CONDUIT IN GROUT FILLED CELLS EXCEPT AS NOTED ABOVE.
5. CONTRACTOR SHALL COORDINATE WITH ELECTRICAL CONTRACTOR FOR PLACEMENT OF RECESSED JUNCTION BOXES, RECESSED SWITCH BOXES, OTHER RECESSED ITEMS, AND CONDUIT INSTALLED IN MASONRY WALLS. DO NOT PLACE RECESSED BOXES OR OTHER RECESSED ITEMS IN GROUT FILLED OR SOLID CONCRETE BEAMS OR COLUMNS.

STUDIO
407

STUDIO 407 LLC
1222 Woodward Street #103
Orlando, Florida 32803
(407) 392-3150
jeff@407studio.com | www.407studio.com

#23-089
SEIDEL COMMERCIAL
BUILDING 1

CONSULTANT:
DESIGN GROUP, INC.
STRUCTURAL ENGINEERS
INTERNATIONAL ENGINEERING SERVICES DESIGN GROUP, INC.
LICENSE NO. EB 5734 ROBERT G. JOHNSON, PE #1899
7550 FUTURES DRIVE, SUITE 8 PHONE NO. (407) 365-9600
ORLANDO, FLORIDA 32819 FAX NO. (407) 365-9672
RJJOHNSON@IESDESIGNGROUP.COM PROJECT NO. 23-089

Issued For
PERMIT AND CONSTRUCTION 9/8/2023

#	Description	Date

Project No: 23-089
Drawn By: H.P. ROBERT G. JOHNSON
FLORIDA, PE #61899

© Studio 407 LLC
Sheet Title

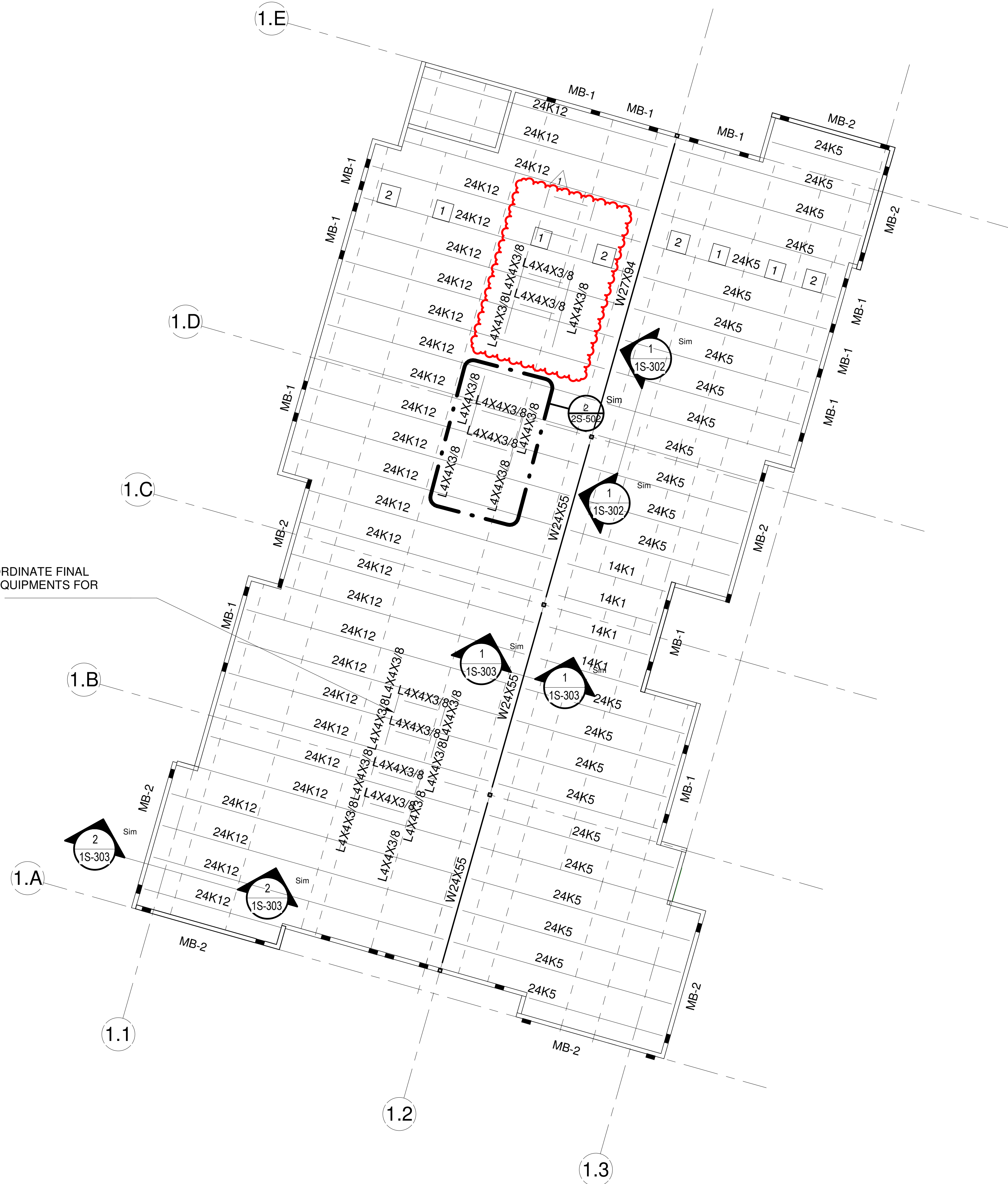
FOUNDATION PLAN

1S-201

9/8/2023 5:46:39 PM

THIS MATERIAL REPRESENTS DEVELOPMENT, ARCHITECTURAL, AND OTHER DESIGN CONCEPTS BEING CONSIDERED AT THE TIME IT WAS PRODUCED. THIS INFORMATION IS SUBJECT TO REVISIONS AND MODIFICATIONS WITHOUT NOTICE. ALL ORAL AND WRITTEN INFORMATION, DESCRIPTIONS, PLANS, COPY, GRAPHICS, PHOTOGRAPHY, CHARTS, GRAPHS AND RENDERINGS MAY BE MODIFIED AT ANY TIME AND SHOULD NOT BE RELIED UPON AS FINAL.

CONTRACTOR TO COORDINATE FINAL
LOCATION OF MECH. EQUIPMENTS FOR
ROOF PENETRATION.



PLAN NOTES:

1. JOIST BRIDGING - TYP - 3 ROWS OF TOP CHORD BRIDGING.
2. UPLIFT BRIDGING AT FIRST BOTTOM CHORD PANEL POINTS @ END OF JOISTS.
3. JOIST SPACING SHALL BE 5' O.C. UNLESS NOTED OTHERWISE.

ROOF CONSTRUCTION:

1-1/2" DEEP, 20 GAGE WIDE RIB "B" DECK EQUAL TO 1.5B20 ROOF DECK AS PER MFR BY VULCRAFT 5/8"
PUDDLE WELDS ON 36/7 PATTERN W/10 SIDELAP FASTENERS AT 12" O.C.
TOP OF JOIST BEARING AND TOP OF STEEL SHALL BE 17'-4".

LINTEL SCHEDULE: REFER TO SHEET-2S-502

MB-1-REFER TO SCHEDULE FOR LINTEL SIZES & TYPE.
MB-2-REFER TO SCHEDULE FOR LINTEL SIZES & TYPE.

STUDIO 407

STUDIO 407 LLC
1222 Woodward Street #103
Orlando, Florida 32803
(407) 392-3150
jeff@407studio.com | www.407studio.com

#23-089
**SEIDEL COMMERCIAL
BUILDING 1**

CONSULTANT:

I E S DESIGN GROUP, INC.
STRUCTURAL ENGINEERS

INTERNATIONAL ENGINEERING SERVICES DESIGN GROUP, INC.
LICENSE NO. ES 5734 ROBERT G. JOHNSON, PE #1899
7550 FUTURES DRIVE, SUITE 8 ORLANDO, FLORIDA 32819 PHONE NO. (407) 363-9600
RJOHNSON@IESDESIGNGROUP.COM FAX NO. (407) 363-9672
PROJECT NO. 23-089

Issued For

PERMIT AND CONSTRUCTION 9/8/2023

Revisions

#	Description	Date
1	Amendment #1 - VE	06/10/2024

Seal

Project No: 23-089
Drawn By: H.P. ROBERT G. JOHNSON
FLORIDA, PE #61899

© Studio 407 LLC

Sheet Title

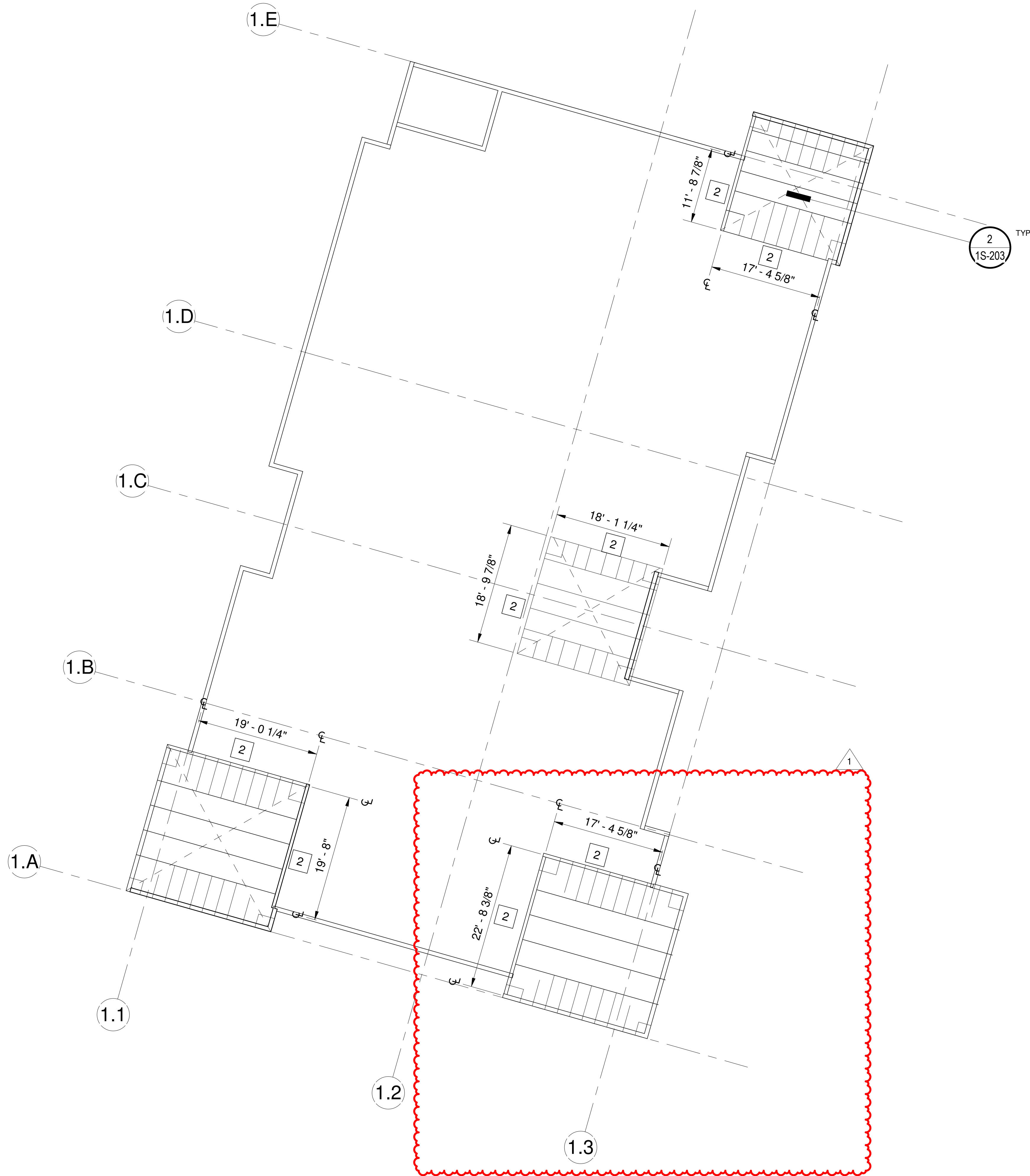
ROOFING PLAN

1S-202

6/24/2024 2:35:10 PM

ROOF PLAN
1S-301 1S-202 SCALE: 3/32" = 1'-0"

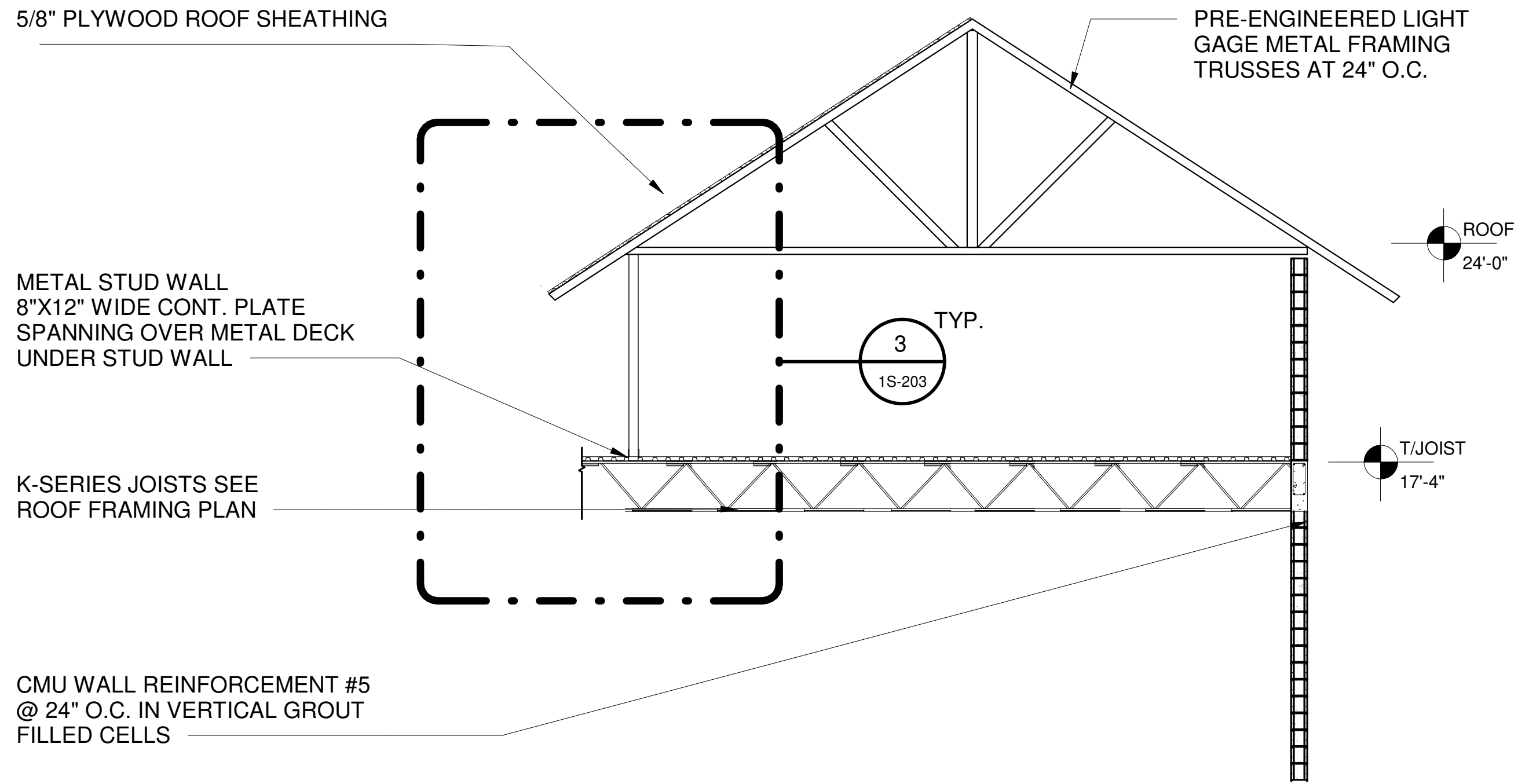
THIS MATERIAL REPRESENTS DEVELOPMENT, ARCHITECTURAL, AND OTHER DESIGN CONCEPTS BEING CONSIDERED AT THE TIME IT WAS PRODUCED. THIS INFORMATION IS SUBJECT TO REVISIONS AND MODIFICATIONS WITHOUT NOTICE. ALL ORAL AND WRITTEN INFORMATION, DESCRIPTIONS, PLANS, COPY, GRAPHICS, PHOTOGRAPHY, CHARTS, GRAPHS AND RENDERINGS MAY BE MODIFIED AT ANY TIME AND SHOULD NOT BE RELIED UPON AS FINAL.



HIGH ROOF FRAMING
PLAN

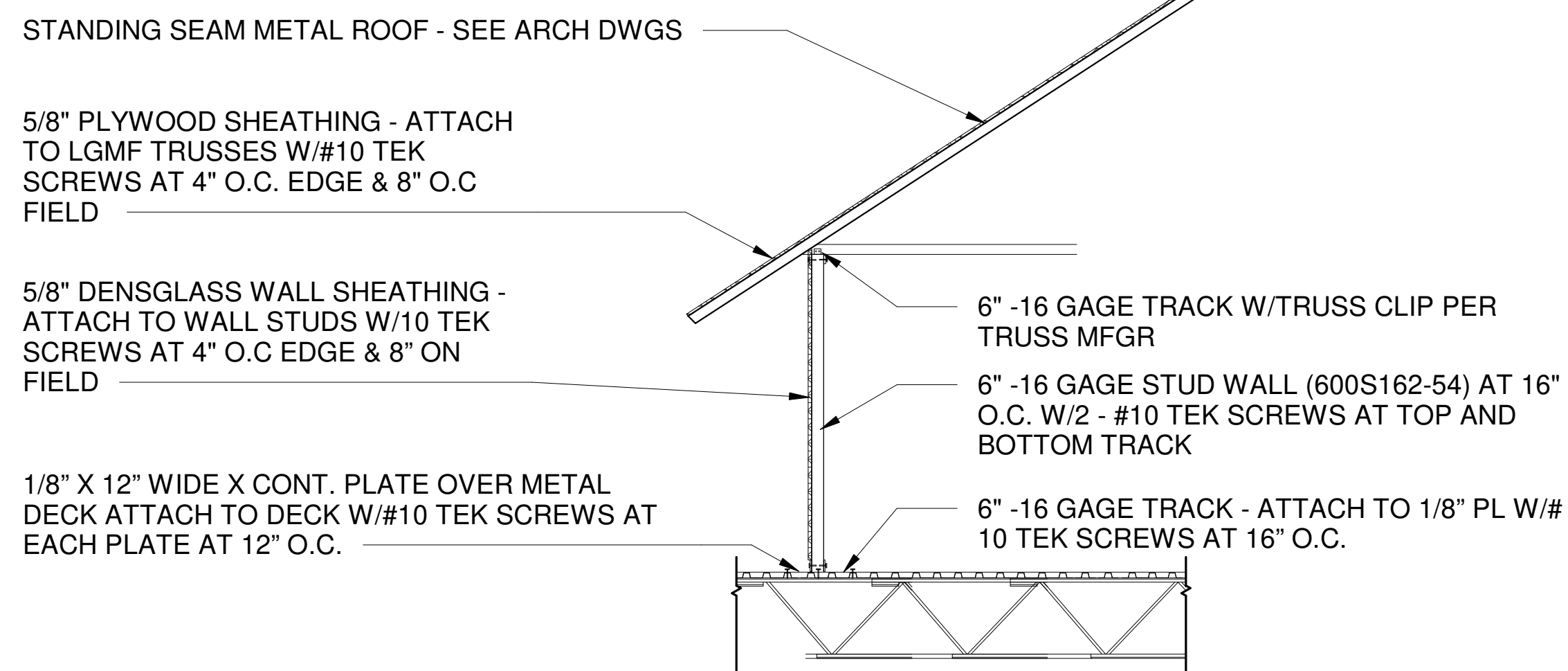
1
1S-203 SCALE: 3/32" = 1'-0"

- PLAN NOTES:**
1. ALL THE ROOF TRUSSES ARE PRE-ENGINEERED.
2. PROVIDE 6"X1 5/8" 16 GAGE STUD WALL AT 16" O.C. TOP OF FLAT ROOF TO SUPPORT PRE-ENGINEERED TRUSSES.



2 ROOF TRUSS DETAIL

1S-203 SCALE: 3/16" = 1'-0"



3 ROOF TRUSS DETAIL
ENLARGED

1S-203 SCALE: 1/4" = 1'-0"

STUDIO
407

STUDIO 407 LLC
1222 Woodward Street #103
Orlando, Florida 32803
(407) 392-3150
jeff@407studio.com | www.407studio.com

#23-089
**SEIDEL COMMERCIAL
BUILDING 1**

CONSULTANT:
IES DESIGN GROUP, INC.
STRUCTURAL ENGINEERS
INTERNATIONAL ENGINEERING SERVICES DESIGN GROUP, INC.
LICENSE NO. ES 5574 ROBERT G. JOHNSON, PE #1899
7550 FUTURES DRIVE, SUITE 8 ORLANDO, FLORIDA 32819 PHONE NO. (407) 363-9600
RJOHNSON@IESDESIGNGROUP.COM FAX NO. (407) 363-9672
PROJECT NO. 23-089

Issued For
PERMIT AND CONSTRUCTION 9/8/2023

#	Description	Date
1	Amendment #1 - VE	06/10/2024

Seal

Project No: 23-089
Drawn By: H.P. ROBERT G. JOHNSON
FLORIDA, PE #61899

© Studio 407 LLC
Sheet Title
**HIGH ROOF FRAMING
PLAN**

1S-203

#23-089
SEIDEL COMMERCIAL
BUILDING 1

CONSULTANT:
I E S DESIGN GROUP, INC.
STRUCTURAL ENGINEERS
INTERNATIONAL ENGINEERING SERVICES DESIGN GROUP, INC.
LICENSE NO. EB 5734 ROBERT G. JOHNSON, PE #1689
7350 FUTURES DRIVE, SUITE 8 PHONE NO. (407) 363-9600
ORLANDO, FLORIDA 32819 FAX NO. (407) 363-9672
RJJOHNSON@IESDESIGNGROUP.COM PROJECT NO. 23-089

Issued For
PERMIT AND CONSTRUCTION 9/8/2023

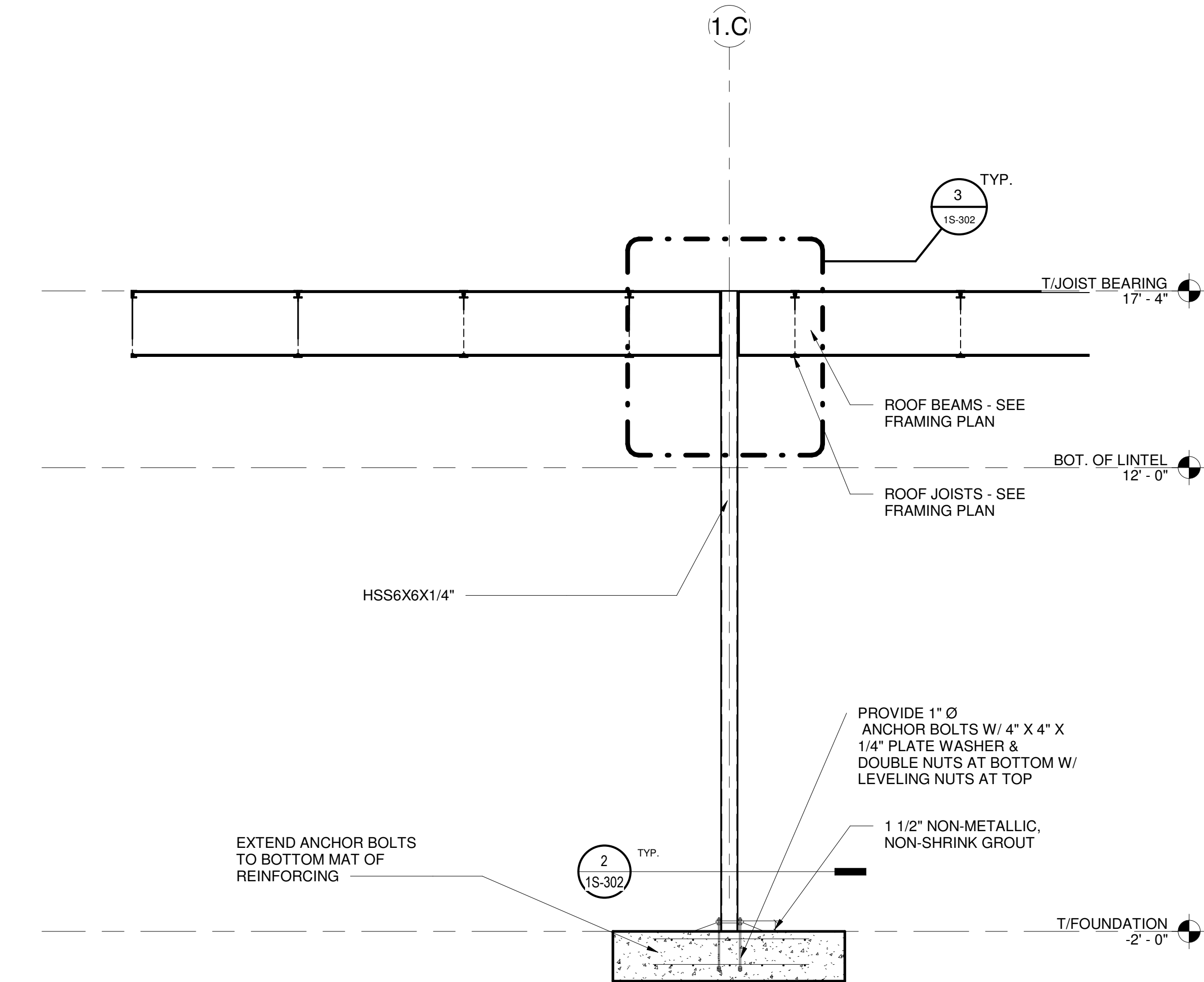
Revisions
Description Date

Project No: 23-089
Drawn By: H.P. ROBERT G. JOHNSON
FLORIDA, PE #61699

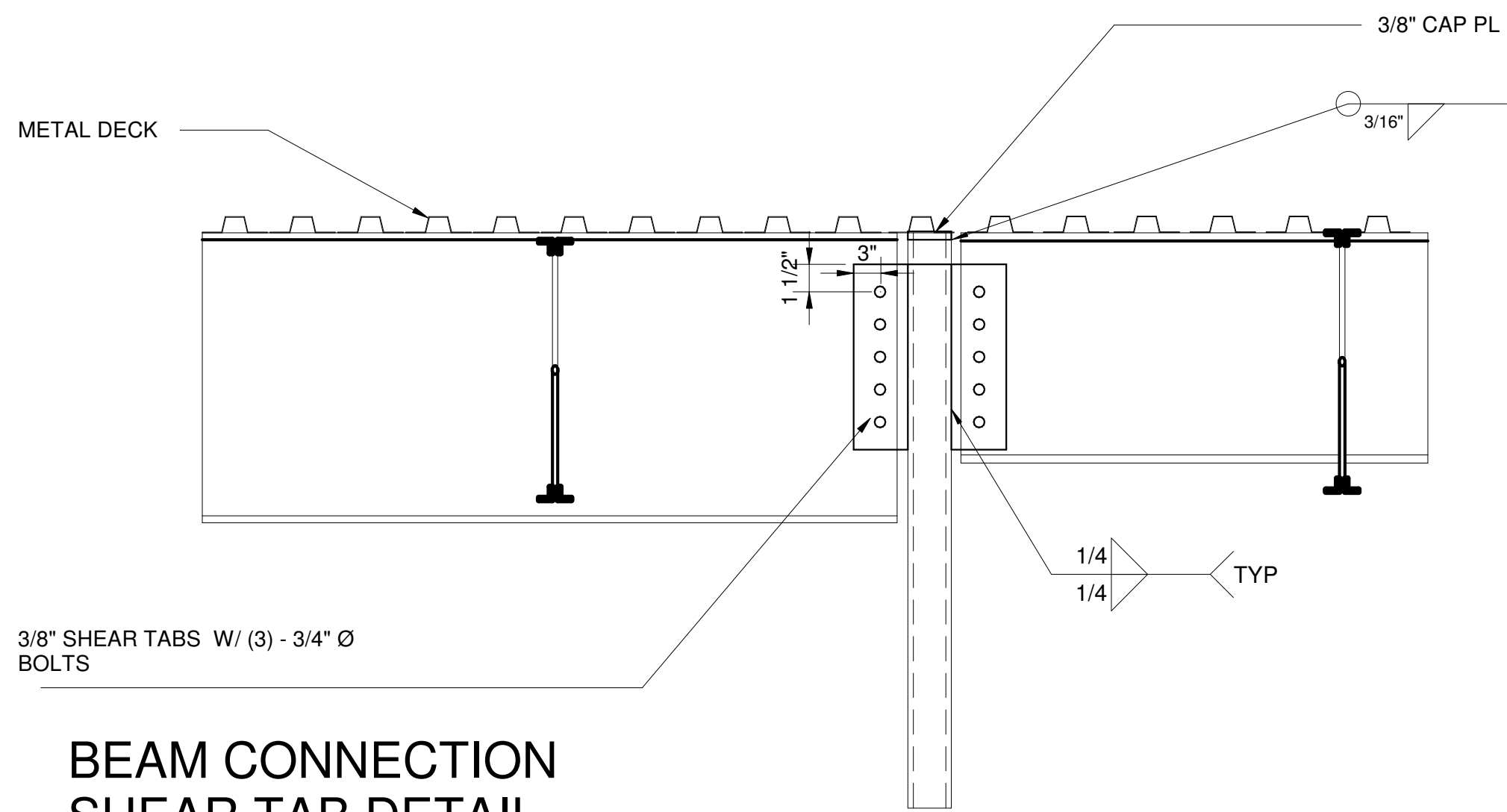
© Studio 407 LLC
Sheet Title

BUILDING SECTIONS

1S-302



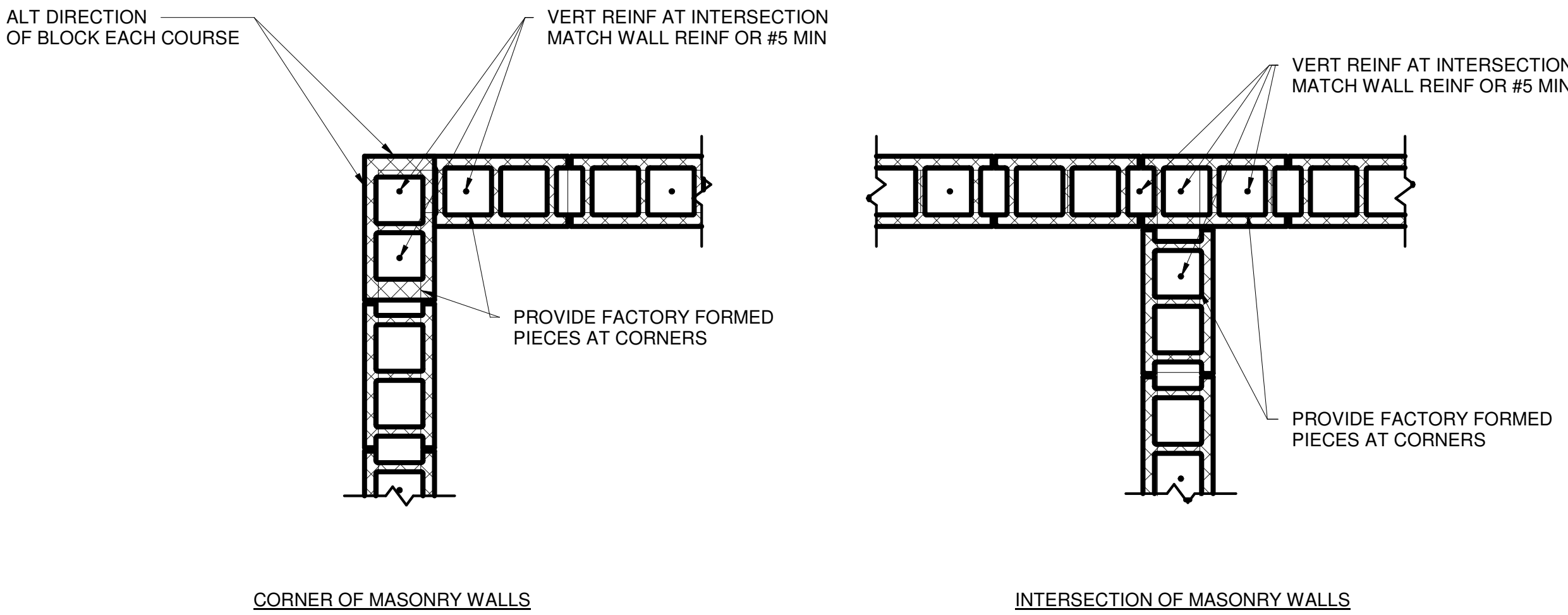
1 SECTION 1
1S-201 1S-302 SCALE: 3/8" = 1'-0"



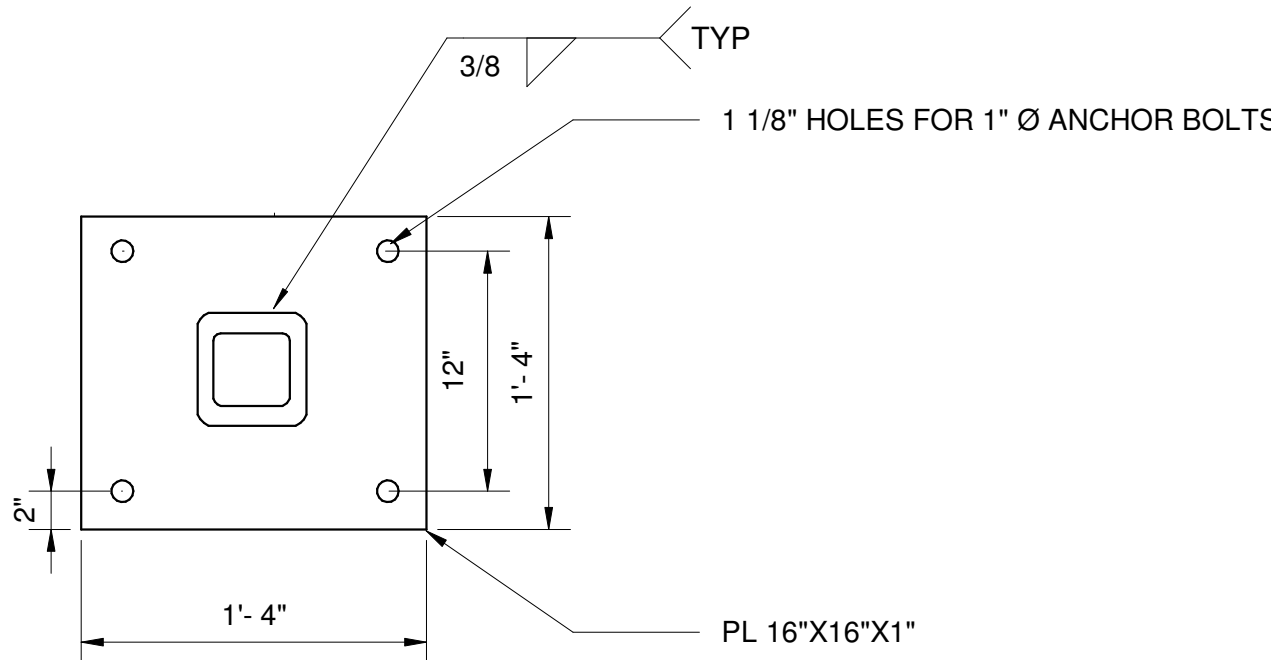
3 BEAM CONNECTION
SHEAR TAB DETAIL
BLDG-1
1S-302 1S-302 SCALE: 1" = 1'-0"

NOTES

1. HORIZ. JOINT REINFORCEMENT SPACED AT 16" OC UNO.
2. TERMINATE JOINT REINFORCEMENT AT EACH SIDE OF WALL C.J.



4 CMU CORNER DETAIL
1S-302 SCALE: 1" = 1'-0"



2 COLUMN BASE PLATE
DETAIL
1S-302 1S-302 SCALE: 1" = 1'-0"

DOUBLE KNOCK OUT COURSE W/ (2) - #5 CONT.
GROUT SOLID

7 5/8" X 24" BEAM W/3 #5 T&B AND 2- #5 AT MID DEPTH W/ #3
STIRRUPS @ 16" O.C. W/ L4 X 4 X 1/4 X 0'-8" W/2 - 1/2" Ø
X 4" HSA @ 5" O.C TOP ELEV.

PRE-ENGINEERED AWNINGS - SEE
ARCHITECTURAL DRAWINGS. FILL ALL CELLS AT
CONNECTION TO CMU WALL

PRECAST LINTEL SEE ROOF FRAMING PLAN
AND LINTEL SCHEDULE

#5@24" O.C VERTICAL CENTERED IN GROUT FILLED
CELLS.

#5 DOWELS @ 24" O.C.

FOOTING - SEE
FOUNDATION PLAN

NOTE: CAST-CRETE PRECAST LINTEL
8FB-1B/1T W/ (1) - #5 BOTTOM FOR
EXTERNAL DOOR/WINDOWS - TYP UN.O

TYP - STEEL JOIST &
METAL DECK

ROOF
17' - 4"

BOT. OF LINTEL
12' - 0"

LEVEL 01
0' - 0"

T/FOUNDATION
-2' - 0"

1.2

1/4"
1/4" 2 1/2"

T/JOIST BEARING
17' - 4"

STEEL JOISTS - SEE ROOF
FRAMING PLAN

WIDE FLANGE BEAMS

HSS6X6X3/8"

2
1S-202 1S-303 SCALE: 3/8" = 1'-0"

1
1S-202 1S-303 SCALE: 1/2" = 1'-0"

STUDIO
407

STUDIO 407 LLC
1222 Woodward Street #103
Orlando, Florida 32803
(407) 392-3150
jeff@407studio.com | www.407studio.com

#23-089
SEIDEL COMMERCIAL
BUILDING 1

CONSULTANT:
I E S DESIGN GROUP, INC.
STRUCTURAL ENGINEERS
INTERNATIONAL ENGINEERING SERVICES DESIGN GROUP, INC.
LICENSE NO. EB 5734 ROBERT G. JOHNSON, PE #1699
7550 FUTURES DRIVE, SUITE 8 PHONE NO. (407) 363-9600
ORLANDO, FLORIDA 32819 FAX NO. (407) 363-9672
RJJOHNSON@IESDESIGNGROUP.COM PROJECT NO. 23-089

Issued For
PERMIT AND CONSTRUCTION 9/8/2023

Revisions
Description Date

Project No: 23-089
Drawn By: H.P. ROBERT G. JOHNSON
FLORIDA, PE #61699

© Studio 407 LLC
Sheet Title

BUILDING SECTIONS

1S-303

9/8/2023 5:46:42 PM

THIS MATERIAL REPRESENTS DEVELOPMENT, ARCHITECTURAL, AND OTHER DESIGN CONCEPTS BEING CONSIDERED AT THE TIME IT WAS PRODUCED. THIS INFORMATION IS SUBJECT TO REVISIONS AND MODIFICATIONS WITHOUT NOTICE. ALL ORAL AND WRITTEN INFORMATION, DESCRIPTIONS, PLANS, COPY, GRAPHICS, PHOTOGRAPHY, CHARTS, GRAPHS AND RENDERINGS MAY BE MODIFIED AT ANY TIME AND SHOULD NOT BE RELIED UPON AS FINAL.

#23-089
**SEIDEL COMMERCIAL
BUILDING 1**

CONSULTANT:
IES DESIGN GROUP, INC.
STRUCTURAL ENGINEERS

INTERNATIONAL ENGINEERING SERVICES DESIGN GROUP, INC.
LICENSE NO. ES 574 ROBERT G. JOHNSON, PE #1469
7500 FUTURES DRIVE, SUITE 8 PHONE NO. (407) 363-9600
ORLANDO, FLORIDA 32819 FAX NO. (407) 363-9672
RJ@IESDESIGNGROUP.COM PROJECT NO. 23-089

Issued For
PERMIT AND CONSTRUCTION 9/8/2023

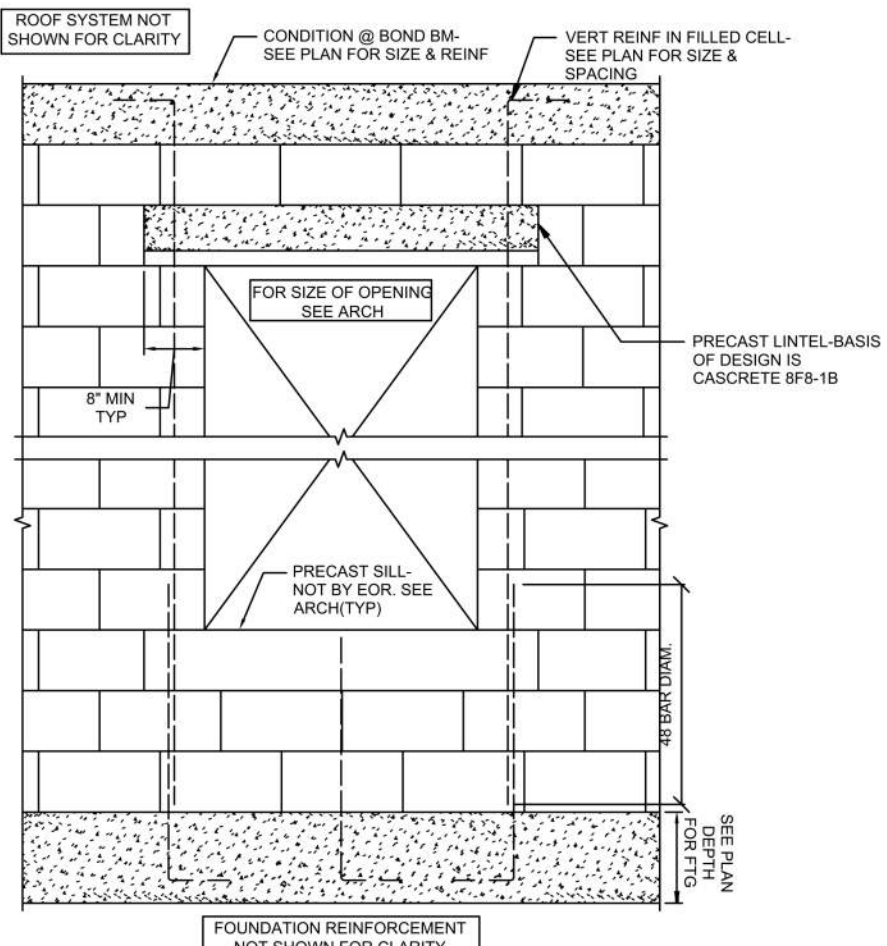
Revisions
Description Date

Project No: 23-089
Drawn By: H.P. ROBERT G. JOHNSON
FLORIDA, PE #61899

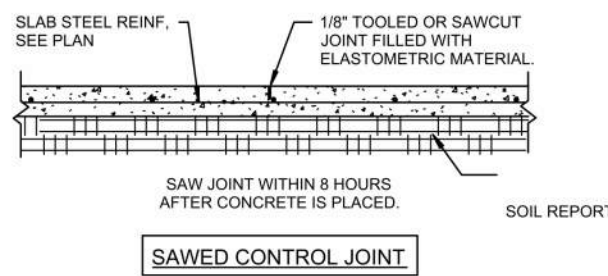
© Studio 407 LLC
Sheet Title

STRUCTURAL DETAILS

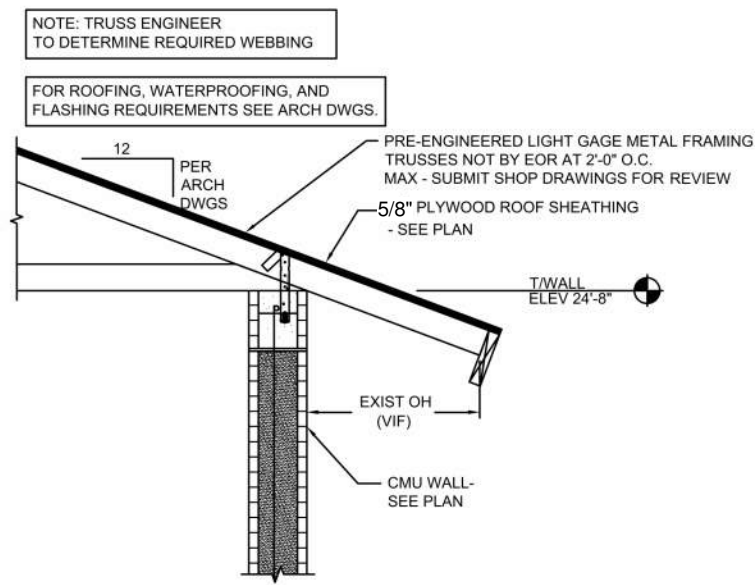
1S-501



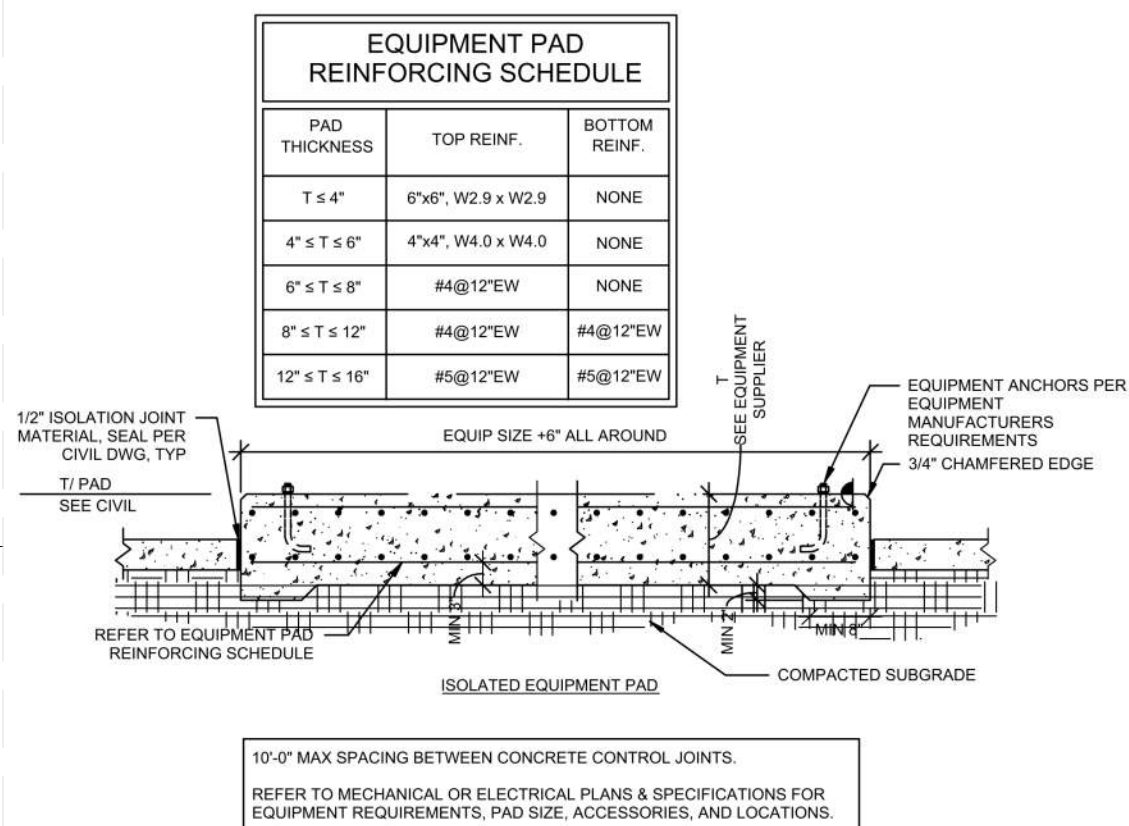
BOND BEAM MASONRY OPENING CONDITION 1
3/4" = 1'-0" S-501



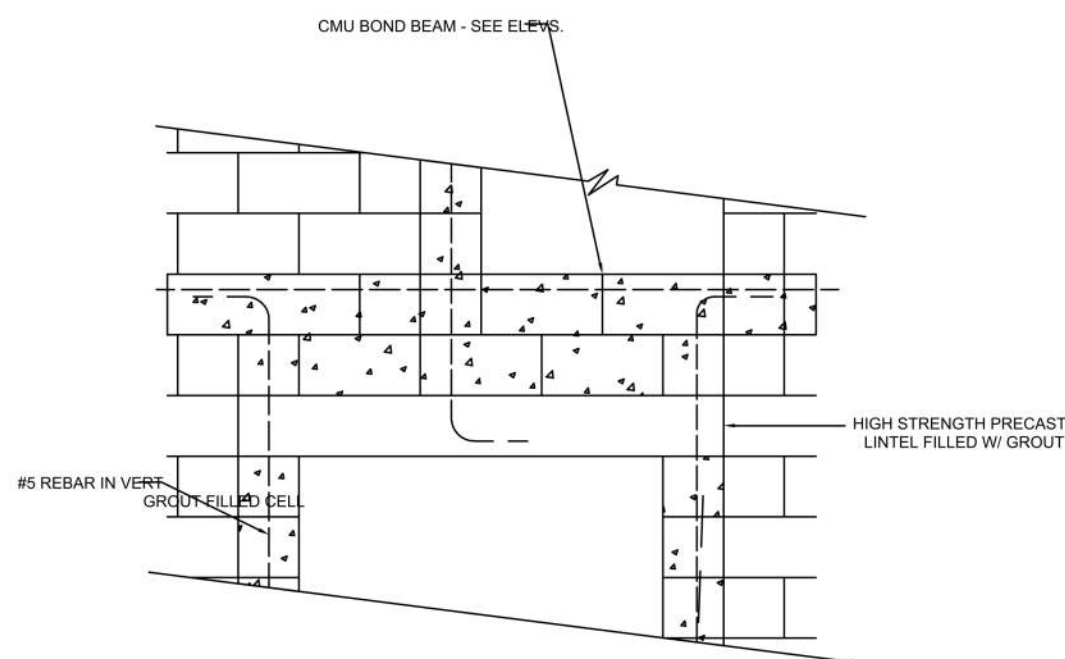
MASONRY REINFORCEMENT SCHEMATIC ISOMETRIC 2
1/2" = 1'-0" S-501



WOOD FRAME DETAIL AT TYPICAL TRUSS CONNECTION 3
3/4" = 1'-0" S-501



TYP. HOUSEKEEPING PAD - EXTERIOR 4
3/4" = 1'-0" S-501



OFFSET VERTICAL FILLED CELL DETAIL 5
3/4" = 1'-0" S-501

#23-089
**SEIDEL COMMERCIAL
BUILDING 1**

CONSULTANT:
I E S DESIGN GROUP, INC.
STRUCTURAL ENGINEERS
INTERNATIONAL ENGINEERING SERVICES DESIGN GROUP, INC.
LICENSE NO. EB 5734 ROBERT G. JOHNSON, PE #1689
7350 FUTURES DRIVE, SUITE 8 PHONE NO. (407) 363-9900
ORLANDO, FLORIDA 32819 FAX NO. (407) 363-9972
RJJOHNSON@IESDESIGNGROUP.COM PROJECT NO. 23-089

Issued For
PERMIT AND CONSTRUCTION 9/8/2023

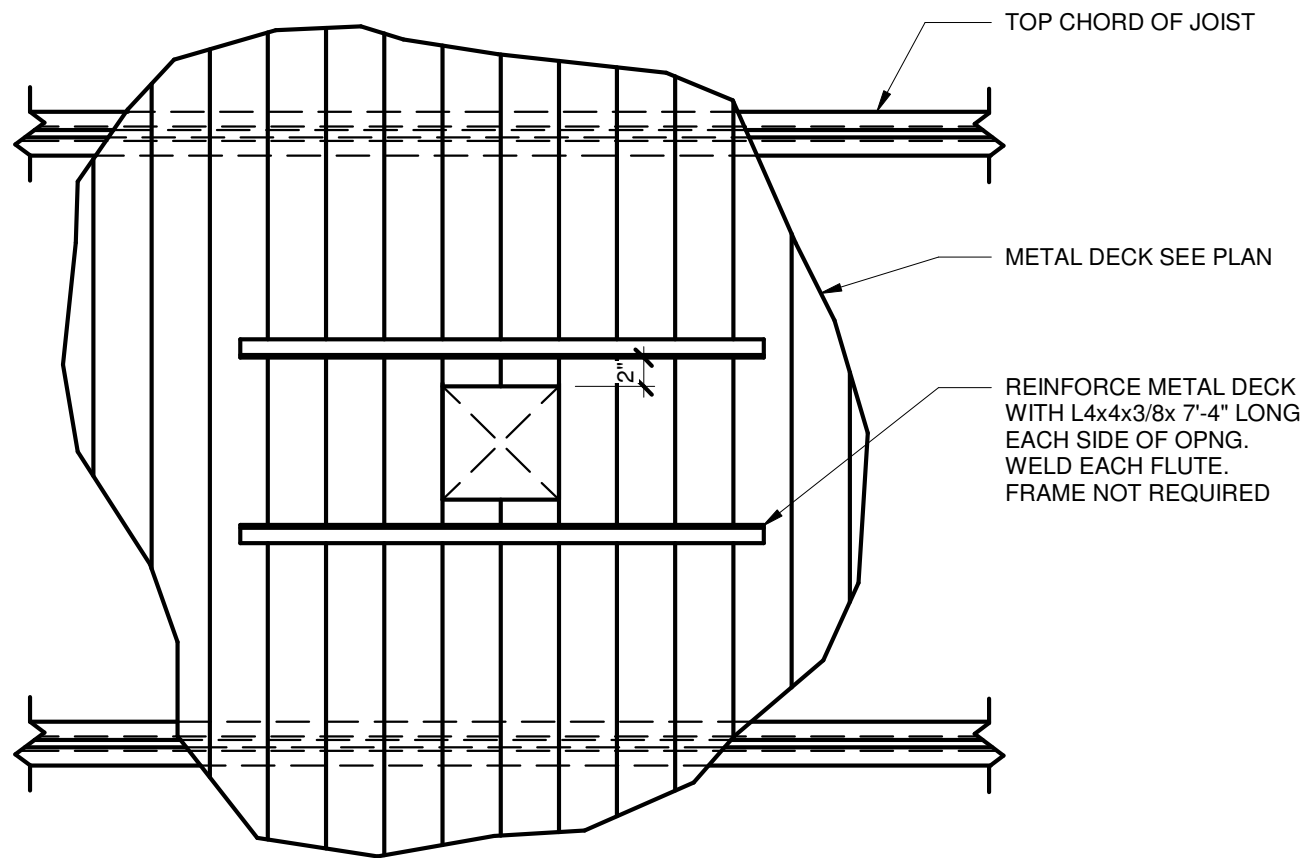
Revisions
Description Date

Project No: 23-089
Drawn By: H.P. ROBERT G. JOHNSON
FLORIDA, PE #61699

© Studio 407 LLC
Sheet Title

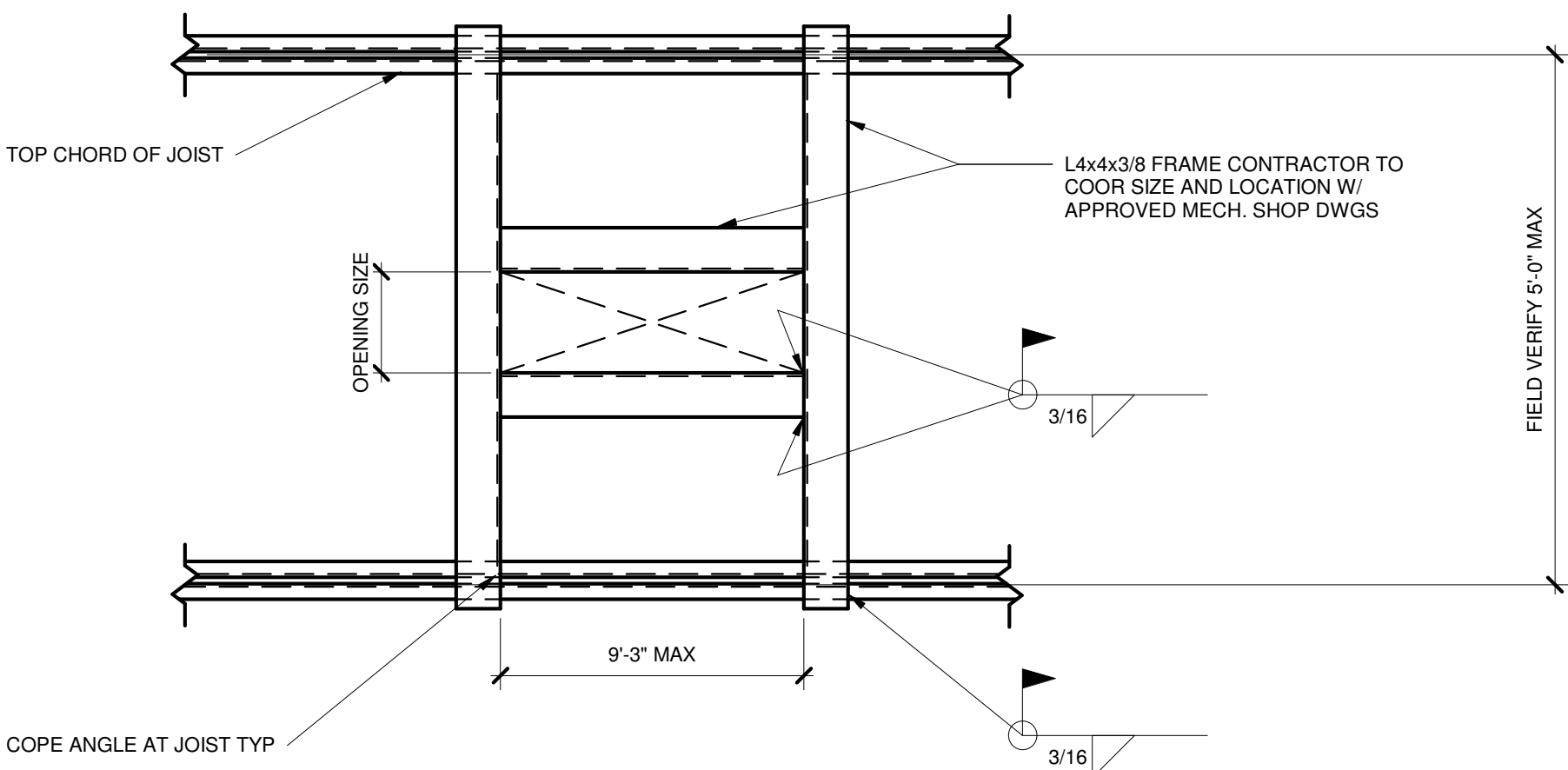
STRUCTURAL DETAILS

1S-502



SMALL OPNG

OPNG SMALLER THAN 12" SQ.
LARGER THAN 6" SQ.



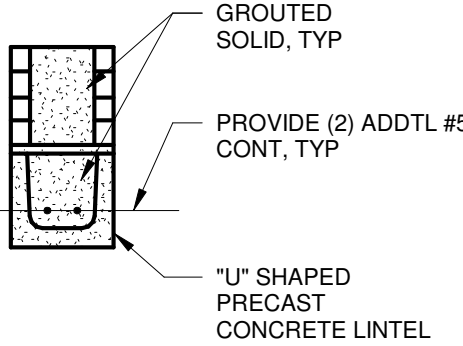
LARGE OPNG

LARGER THAN 12" SQ. OR ROUND

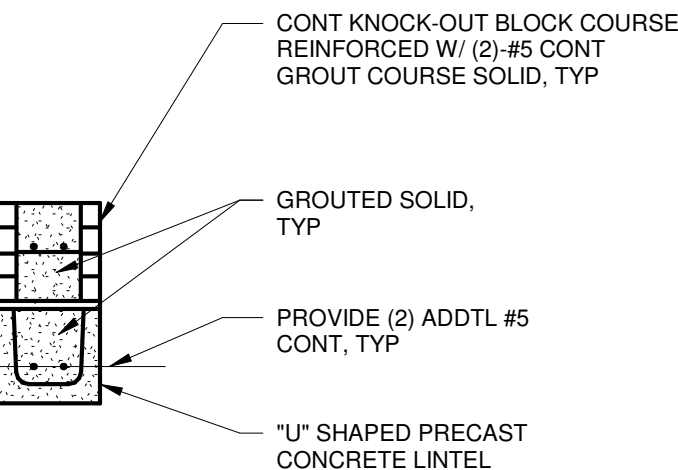
**TYP ROOF OPENING
DETAIL**

2
1S-502
SCALE: 1" = 1'-0"

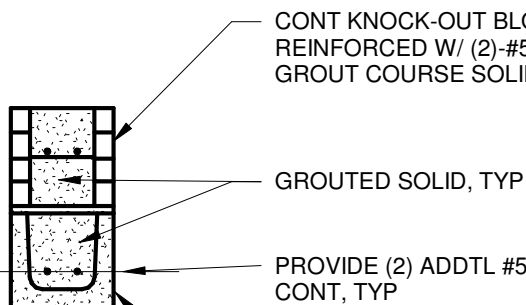
NOTE
SHORE PRECAST "U" LINTELS
PER MANUFACTURER'S
RECOMMENDATIONS.



MB-1



MB-2



MB-3

NOTE: CAST-CRETE PRECAST LINTEL
8F8-1B/1T W/ (1) - #5 BOTTOM FOR
EXTERNAL DOOR/WINDOWS - TYP UN.O

MASONRY LINTEL SCHEDULE (CAST-CRETE LINTEL)			
MARK	LENGTH (L)	CAST-CRETE MARK	REMARK
MB-1	2' -10" < L < 5'-10"	8F8-1B PRECAST	
MB-2	5' -10" < L < 14'-0"	8F16-1B PRECAST	
MB-3	14' -0" < L < 21'-4"	8F16-2B/2T PRESTRESSED	

NOTES:
1. PROVIDE MASONRY LINTEL OVER ALL OPNGS. IF NO LINTEL IS SPECIFIED, PROVIDE MB-X
2. PROVIDE MINIMUM END BEARING OF 8" CUT OUT BOTTOM OF LINTEL AT END TO ALLOW CONTINUATION OF FILLED CELL REINF.
3. MASONRY LINTEL SUBSTITUTIONS MUST BE APPROVED BY THE STRUCT ENGINEER OF RECORD PRIOR TO INSTALLATION.

**MASONRY LINTEL
SCHEDULE**

1
1S-502
SCALE: 3/4" = 1'-0"