

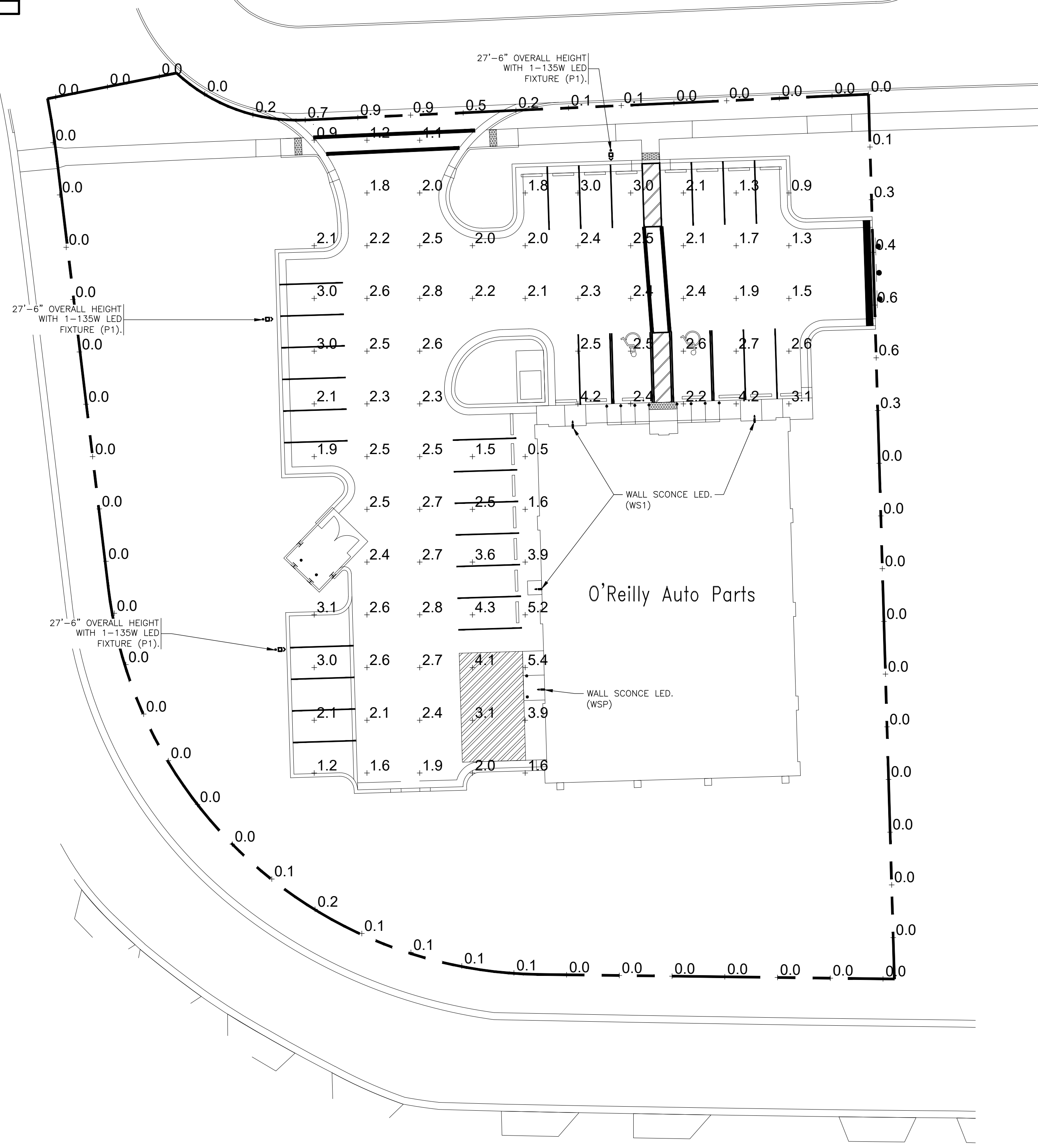
EXTERIOR LIGHT FIXTURE SCHEDULE													
ALL ITEMS LISTED ON THE "LIGHT FIXTURE SCHEDULE" WILL BE SUPPLIED BY THE OWNER (O'REILLY). ITEMS SHALL BE DIRECT ORDERED AND/OR RELEASED FROM THE LISTED ELECTRICAL EQUIPMENT DISTRIBUTOR.				SOURCEONE SOLUTIONS O'REILLY TEAM 4341 GREEN ASH DRIVE EARTH CITY, MO 63045				SOURCEONE SOLUTIONS O'REILLY TEAM EMAIL: ncreilly@sourceonesolutions.com PHONE: 314-499-6400					
MARK	MFR.	CATALOG NUMBER	SUPPLY VOLTAGE	FINISH	MOUNTING			LAMPS			WATTAGE	NOTES	FIXTURE QUANTITY
					SURFACE	WALL	CEILING	TYPE	OTHER	QUANTITY			
LED EXTERIOR LIGHTS													
WS1	LSI	XWM-FT-LED-06L-50-UE-BRZ NO SUBSTITUTIONS	120	DARK BRONZE	X			X			45	FULL CUT-OFF, BUG RATING B1-U0-G1. ARCHITECTURAL ELEVATIONS SHOW DIMENSIONED LOCATIONS.	3
WSP	LSI	XWM-FT-LED-06L-50-UE-BRZ-PC120 NO SUBSTITUTIONS	120	DARK BRONZE	X			X			45	FULL CUT-OFF, BUG RATING B1-U0-G1. ARCHITECTURAL ELEVATIONS SHOW DIMENSIONED LOCATIONS.	1
LED POLE LIGHTS													
P1	LSI	MRW-LED-18L-SIL-FT-UNV-DIM-50-70CRI-BRZ-IL	120	DARK BRONZE			X	X			135	25' POLE LENGTH, ADVANCE BALLASTS, FULL CUT-OFF, NO SUBSTITUTIONS. ANCHOR BOLTS W/HARDWARE & TEMPLATE. WITH INTERNAL LOUVER HOUSE SIDE SHIELD, BUG RATING B2-U0-G3	3
FIXTURE QUANTITY TO BE VERIFIED WITH SITE PLAN QUANTITY													

BACKLIGHT-UPLIGHT-GLARE (BUG) RATING / FULL CUTOFF												
ALL "LSI MRM" & "XWM" LED FIXTURES HAVE ZERO UPLIGHT AND ARE CONSIDERED FULL CUT OFF AND DARKSKY COMPLIANT. THE DELIVERED LUMEN CHART BELOW APPLIES TO "LSI XWM" FIXTURES AND CONFIRMS THAT IN EVERY CONFIGURATION THE FIXTURE PRODUCES ZERO UPLIGHT (U = 0). BUG RATING CHART FOR "LSI MRM" FIXTURES IS FOUND ON CORRESPONDING "SP" SHEETS.												
DELIVERED LUMENS*												
Lumen Package	Orientation	CRI	2700K		3000K		4000K		5000K		Wattage	
Delivered Lumens	Efficacy	BUG Rating	Delivered Lumens	Efficacy	BUG Rating	Delivered Lumens	Efficacy	BUG Rating	Delivered Lumens	Efficacy	BUG Rating	
OSL	2	70	2703	120	B1-U0-G1	2822	125	B1-U0-G1	3088	137	B1-U0-G1	22.6
	FT	70	2752	122	B1-U0-G1	2873	127	B1-U0-G1	3144	139	B1-U0-G1	22.6
OAL	2	70	2718	120	B1-U0-G1	2838	126	B1-U0-G1	3105	137	B1-U0-G1	29.5
	FT	70	2846	129	B1-U0-G1	2922	126	B1-U0-G1	3061	137	B1-U0-G1	29.5
OBL	2	70	3610	122	B1-U0-G1	3769	128	B1-U0-G1	4124	140	B1-U0-G1	62.0
	FT	70	3556	121	B1-U0-G1	3722	126	B1-U0-G1	4073	138	B1-U0-G1	62.0
OBL	2	70	5274	118	B2-U0-G2	5506	123	B2-U0-G2	6025	135	B2-U0-G2	44.7
	FT	70	5369	120	B1-U0-G1	5606	125	B1-U0-G1	6134	137	B1-U0-G2	44.7
OBL	2	70	5303	119	B1-U0-G2	5536	124	B1-U0-G2	6058	136	B1-U0-G2	62.0
	FT	70	6996	113	B2-U0-G2	7304	118	B2-U0-G2	7993	129	B2-U0-G2	62.0
OBL	2	70	7123	115	B1-U0-G2	7437	120	B1-U0-G2	8138	131	B2-U0-G2	62.0
	FT	70	7035	113	B1-U0-G2	7345	118	B2-U0-G2	8037	130	B2-U0-G2	62.0
OBL	2	70	10516	103	B2-U0-G2	10979	107	B3-U0-G3	12014	118	B3-U0-G3	102.2
	FT	70	10707	105	B2-U0-G2	11178	109	B2-U0-G2	12232	120	B2-U0-G2	102.2
OBL	2	70	10574	103	B2-U0-G3	11040	106	B2-U0-G3	12280	118	B2-U0-G3	102.2
	FT	70	10574	103	B2-U0-G3	11040	106	B2-U0-G3	12280	118	B2-U0-G3	102.2

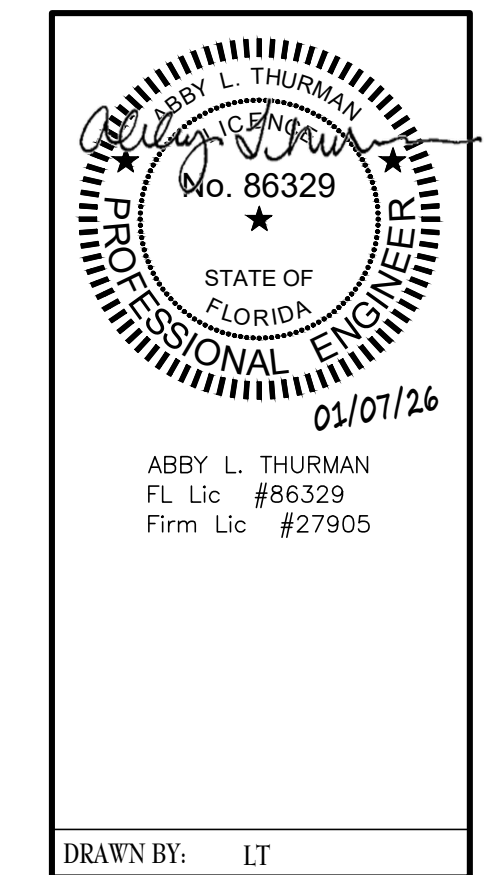
**AUTOMATIC LIGHTING CONTROL**

COMPLIANCE WITH ENERGY CODE IS ACHIEVED BY:

- ONCE THE EMS HAS BEEN PROGRAMMED, THE INTERIOR AND EXTERIOR LIGHTS WILL TURN ON AND OFF USING THE FOLLOWING LOGIC: SEE EM SHEETS.
  - INTERIOR WORK LIGHTS WILL TURN ON WITH FIRST MOTION IN THE STORE AND WILL TURN OFF 15 MINUTES AFTER LAST MOTION ONCE THE STORE IS CLOSED.
  - INTERIOR SALES LIGHTS WILL TURN ON AT STORE OPENING AND TURN OFF 15 MINUTES AFTER STORE CLOSING.
  - EXTERIOR SIGN LIGHTS WILL TURN ON WHEN ITS DARK ENOUGH OUTSIDE ANYTIME DURING STORE HOURS, AND WILL TURN OFF AT STORE CLOSING.
  - EXTERIOR SITE LIGHTS WILL TURN ON WHEN IT IS DARK ENOUGH OUTSIDE AND IT IS WITHIN STORE HOURS OR THERE IS MOTION IN THE STORE. THEY WILL TURN OFF 30 MINUTES AFTER LAST MOTION ONCE THE STORE IS CLOSED.
- FOR NEW CONSTRUCTION LOCATIONS ONLY, THERE IS A TEMPORARY PROGRAM TO KEEP SIGN AND SITE LIGHTS ON UNTIL MIDNIGHT RATHER THAN THE TIMES INDICATED ABOVE. O'REILLY WILL DISABLE THIS PROGRAM ONE YEAR AFTER STORE OPENING. (EXCLUDING TX, EXTERIOR LIGHTS STAY ON OVERNIGHT FOR SECURITY PURPOSES.)
- RESTROOMS AND OFFICES: ALL LIGHTING IN THESE AREAS ARE CONTROLLED BY OCCUPANT-SENSING DEVICES.



**SITE LIGHTING PHOTOMETRICS**  
SCALE: 1"=20'



**Thomas A. Lundberg**  
ARCHITECT  
1736 East Sunshine, Suite 417  
Springfield, Missouri 65804  
417.862.0558  
417.862.3265  
e-mail: architect@esteryschneider.com

PROJECT:  
**NEW O'REILLY AUTO PARTS STORE**  
HWY FL. 44  
EUSTIS, FL #2  
**SITE LIGHTING PHOTOMETRICS**

**O'Reilly** AUTO PARTS  
CORPORATE OFFICES  
233 SOUTH PATTERSON  
SPRINGFIELD, MISSOURI 65802  
(417) 862-2674 TELEPHONE

01-07-26  
SITE BASE UPDATE. NO CHANGE TO MEP SYSTEM.



COMM # 4902  
DATE: 5-23-25  
REVISION DATE: 01-07-26

Catalog #: \_\_\_\_\_ Project: \_\_\_\_\_  
Prepared By: \_\_\_\_\_ Date: \_\_\_\_\_ Type: \_\_\_\_\_

## Mirada Medium (MRM) Outdoor LED Area Light

IP66 IK08

OVERVIEW	
Lumen Package	7,000 - 48,000
Wattage Range	48 - 401
Efficacy Range (LPW)	117 - 160
Weight (Bsk/ck)	30 (13.6)

**QUICK LINKS**

[Ordering Guide](#) [Performance](#) [Photometrics](#) [Dimensions](#)

**FEATURES & SPECIFICATIONS**

**Construction**

- Rugged die-cast aluminum housing contains factory prewired driver and optical unit. Cast aluminum wiring access door located underneath.
- Designed to mount to square or round poles.
- Fixtures are finished with LSI's DuraGrip® polyester powder coat finishing process. The DuraGrip finish withstands extreme weather changes without cracking or peeling. Other standard LSI finishes available. Consult factory.
- Shipping weight: 37 lbs in carton.

**Optical System**

- State-of-the-art one piece silicone optic sheet delivers industry leading optical control with an integrated gasket to provide IP66 rated sealed optical chamber in 1 component.
- Proprietary silicone refractor optics provide exceptional coverage and uniformity in IES Types 2, 3, 5W, FT, FTA and AM.
- Silicone optical material does not yellow or crack with age and provides a typical light transmission of 95%.
- Zero uplight.
- Available in 5000K, 4000K, and 3000K color temperatures per ANSI C78.377. Also Available in Phosphor Converted Amber with Peak Intensity at 610nm.
- Minimum CRI of 70.
- Integral lower (L) and house-side shield (H) options available for improved backlight control without sacrificing street side performance. See page 3 for more details.

**Electrical**

- High-performance programmable driver features over-voltage, under-voltage, short-circuit and over temperature protection. Custom lumen and wattage packages available.
- 0-10V dimming (10% - 100%) standard.
- Standard Universal Voltage (120-277 Vac)
- Optional 50/60 Hz or optional High Voltage (347-480 Vac).
- L80 Calculated Life >100k Hours (See Lumen Maintenance on Page 5)
- Total harmonic distortion <20%
- Operating temperature -40°C to +50°C (-40°F to +122°F). 42L and 48L lumen packages rated to +40°C.
- Power factor >0.9
- Input power stays constant over life.
- Field replaceable 10KV surge protection device meets a minimum Category C Low operation (per ANSI/IEEE C62.41.2).
- High-efficiency LEDs mounted to metal-core circuit board to maximize heat dissipation
- Components are fully encased in potting material for moisture resistance. Driver complies with FCC standards. Driver and key electronic components can easily be accessed.

**Controls**

- Optional integral passive infrared Bluetooth™ motion and photocell sensor (see page 9 for more details). Fixtures operate independently and can be commissioned via iOS or Android configuration app.
- LSI's AirLink™ wireless control system options reduce energy and maintenance costs while optimizing light quality 24/7 (see page 9 for more details).

**Installation**

- Designed to mount to square or round poles.
- A single fastener secures the hinged door, underneath the housing and provides quick & easy access to the electrical compartment.
- Included terminal block accepts up to 12 ga. wire.
- Utilizes LSI's traditional 3" drill pattern B3 for easy fastening of LSI products. (See drawing on page 9)

**Warranty**

- LSI LED Fixtures carry a 5-year warranty.

**Listings**

- Listed to UL 1598 and UL 8750.
- Meets Buy American Act requirements.
- IDA compliant, with 3000K color temperature selection.
- Title 24 Compliant; see local ordinance for qualification information.
- Suitable for wet Locations.
- IP65 rated Luminaire per IEC 60598.
- 3G rated for ANSI C136.31 high vibration applications when pole mounted (using optional XPM-A bracket) or wall mounted.
- IK08 rated luminaire per IEC 60626 mechanical impact code

**Specifications and dimensions subject to change without notice.**

Page 1/9 Rev. 08/18/21 SPEC.1045.A.0620

Catalog #: \_\_\_\_\_ Project: \_\_\_\_\_  
Prepared By: \_\_\_\_\_ Date: \_\_\_\_\_ Type: \_\_\_\_\_

## Mirada Medium Outdoor LED Area Light

IP66 IK08

**ORDERING GUIDE**

TYPICAL ORDER EXAMPLE: **MRM LED 36L SIL FTA UNV DIM 50 70CRI ALSCS04 BRZ IL**

Luminaire Prefix	Light Source	Lumen Package	Light Output	Distribution	Orientation*	Voltage	Driver
MRM - Mirada	LED	7L - 7,000 lms 8L - 12,000 lms 12L - 12,000 lms 24L - 24,000 lms 36L - 36,000 lms 48L - 48,000 lms Custom Lumen Package†	SIL - Silicone	2 - Type 2 3 - Type 3 5W - 5° Wide FT - Forward Throw FTA - Forward Throw Automobile AM - Automobile Mountable	(Blank) - standard L - Optics rotated left 90° R - Optics rotated right 90°	UNV - Universal Voltage (120-277V) HV - High Voltage (347-480V)	DIM - 0-10V Dimming (0-10%)

Color Temp	Color Rendering	Finish	Options
50 - 5000 CCT 48 - 4800 CCT 30 - 3000 CCT AMB - Phosphor Converted Amber†	70CRI - 70 CRI	BLK - Black BRZ - Dark Bronze CNC - Gun Metal Gray GFP - Graphite MSV - Metallic Silver PLP - Platinum Plus SVC - Satin Verde Green WHT - White	(Blank) - None IH - Integral House-side Shield IL - Integral Lower (Sharp Spill Light Control)†

**Accessory Ordering Information\***

Control Accessory	Order Number*	Mounting Accessory*	Order Number*
PC109 Protocol for use with CRFP option (270V)	127514	Universal Mounting Bracket	684818CLB
PC109 Protocol for use with CRFP option (208V, 240V, 277V)	681126L	Adjustable Slim Pole Kit (2" - 3" Pole)	681126L
Turret Lock Photocell (S4V) for use with CRFP†	62216L	Horizontal Slim Pole Kit (2" - 3" Pole)	681126L
Turret Lock Photocell (480V) for use with CRFP†	62216L	Deck Mount Pole Bracket (Square Pole)	680926L
PC109-17W Turret Lock Controller*	681410	Deck Mount Pole Bracket (Round Pole)	680926L
AirLink 7-7W Turret Lock Controller*	681410	1.5" Deck Mount Pole Bracket (Square Pole)	680926L
PH0324.12V Pole Mounted Occupancy Sensor (24V)	680234L	1.5" Deck Mount Pole Bracket (Round Pole)	680926L
Shoring Cap for use with CRFP	146229	Wall Mount Bracket	361212CLB
		Round Pole Bracket (Minimum Pole Diameter)	361212CLB

**FOOTNOTES:**

- Custom lumen and wattage packages available, consult factory. Values are within industry standard tolerances.
- Not available in HV.
- Not available in HV.
- IP65 is field configurable via the LSI app that can be downloaded from your smartphone's native app store.
- Control device or shoring cap must be ordered separately. See Accessory Ordering Information.
- Accessories are shipped separately and field installed.
- Factory installed CRFP option required. See Options.
- "CRFP" denotes CRFP. See Finish options.
- Only available with ALS/ALS/LSL control options.
- Fixing must be located in hand hole or pole. See Lighting Accessory Guide for compatibility.
- Only available in 1L and 1L Lumen Packages. Consult factory for lead time and availability information.

Page 2/9 Rev. 08/18/21 SPEC.1045.A.0620

Catalog #: \_\_\_\_\_ Project: \_\_\_\_\_  
Prepared By: \_\_\_\_\_ Date: \_\_\_\_\_ Type: \_\_\_\_\_

## Mirada Medium Outdoor LED Area Light

IP66 IK08

**PERFORMANCE**

**DELIVERED LUMENS\***

Lumen Package	Distribution	CRI	3000K CCT			4800K CCT			5000K CCT			Wattage
			Delivered Lumens	Efficacy	BIG Rating	Delivered Lumens	Efficacy	BIG Rating	Delivered Lumens	Efficacy	BIG Rating	
7L	2	70	7360	157	85-10-02	7360	157	85-10-02	7360	157	85-10-02	48
	3		10176	169	85-10-02	10176	169	85-10-02	10176	169	85-10-02	
	5W		7360	157	85-10-02	7360	157	85-10-02	7360	157	85-10-02	
	FT		7360	158	85-10-02	7360	158	85-10-02	7360	158	85-10-02	
	FTA		7360	158	85-10-02	7360	158	85-10-02	7360	158	85-10-02	
8L	AM	70	7887	160	85-10-01	7887	160	85-10-01	7887	160	85-10-01	62
	2		10652	169	85-10-02	10652	169	85-10-02	10652	169	85-10-02	
	3		14204	160	85-10-02	14204	160	85-10-02	14204	160	85-10-02	
	5W		10652	163	85-10-02	10652	163	85-10-02	10652	163	85-10-02	
	FT		10652	163	85-10-02	10652	163	85-10-02	10652	163	85-10-02	
12L	AM	70	10919	162	85-10-01	10919	162	85-10-01	10919	162	85-10-01	85
	2		14560	169	85-10-02	14560	169	85-10-02	14560	169	85-10-02	
	3		19416	160	85-10-02	19416	160	85-10-02	19416	160	85-10-02	
	5W		14560	166	85-10-02	14560	166	85-10-02	14560	166	85-10-02	
	FT		14560	166	85-10-02	14560	166	85-10-02	14560	166	85-10-02	
18L	AM	70	13138	155	85-10-03	13138	155	85-10-03	13138	155	85-10-03	105
	2		17518	163	85-10-02	17518	163	85-10-02	17518	163	85-10-02	
	3		23362	156	85-10-02	23362	156	85-10-02	23362	156	85-10-02	
	5W		17518	160	85-10-02	17518	160	85-10-02	17518	160	85-10-02	
	FT		17518	160	85-10-02	17518	160	85-10-02	17518	160	85-10-02	
24L	AM	70	15948	149	85-10-03	15948	149	85-10-03	15948	149	85-10-03	135
	2		21272	143	85-10-03	21272	143	85-10-03	21272	143	85-10-03	
	3		28364	144	85-10-03	28364	144	85-10-03	28364	144	85-10-03	
	5W		21272	142	85-10-03	21272	142	85-10-03	21272	142	85-10-03	
	FT		21272	142	85-10-03	21272	142	85-10-03	21272	142	85-10-03	
36L	AM	70	19416	144	85-10-03	19416	144	85-10-03	19416	144	85-10-03	180
	2		25888	140	85-10-03	25888	140	85-10-03	25888	140	85-10-03	
	3		34512	140	85-10-03	34512	140	85-10-03	34512	140	85-10-03	
	5W		25888	138	85-10-03	25888	138	85-10-03	25888	138	85-10-03	
	FT		25888	138	85-10-03	25888	138	85-10-03	25888	138	85-10-03	

Page 4/9 Rev. 08/18/21 SPEC.1045.A.0620

Catalog #: \_\_\_\_\_ Project: \_\_\_\_\_  
Prepared By: \_\_\_\_\_ Date: \_\_\_\_\_ Type: \_\_\_\_\_

## Mirada Medium Wall Sconce (XWM) Outdoor Wall Sconce

IP65 IK08

OVERVIEW	
Lumen Package	5,000 - 2,000
Wattage Range	23 - 175
Efficacy Range (LPW)	125 - 158
Weight (Bsk/ck)	27 (12.2)

**QUICK LINKS**

[Ordering Guide](#) [Performance](#) [Photometrics](#) [Dimensions](#)

**FEATURES & SPECIFICATIONS**

**Construction**

- Rugged die-cast aluminum housing contains factory prewired driver and optical unit. Hinged die-cast aluminum wiring access door located underneath.
- Galvanized-steel universal wall mount bracket comes standard with hinging mechanism to easily access the junction box wire connections without removing the luminaire.
- Optional pole-mounting bracket (XPM-A) permits mounting to standard poles.
- Fixtures are finished with LSI's DuraGrip® polyester powder coat finishing process. The DuraGrip finish withstands extreme weather changes without cracking or peeling. Other standard LSI finishes available. Consult factory.
- Max shipping weight: 30lbs in carton

**Optical System**

- State-of-the-art one piece silicone optic provides industry leading optical control while also acting as an integrated gasket reducing system complexity and improving future reliability.
- Proprietary silicone refractor optics provide exceptional coverage and uniformity in IES Types 2, 3, 4, and FT distributions.
- Silicone optical material does not yellow or crack with age and provides a typical light transmission of 95-95%.
- Zero uplight.
- Available in 5000K, 4000K and 3000K color temperatures per ANSI C78.377. Also Available in Phosphor Converted Amber with Peak Intensity at 610nm.
- Minimum CRI of 70.

**Electrical**

- High-performance programmable driver features over-voltage, under-voltage, short-circuit and over temperature protection. Custom lumen and wattage packages available.
- 0-10V dimming (10% - 100%) standard.
- Standard Universal Voltage (120-277 Vac)
- L80 Calculated Life >100k Hours (See Lumen Maintenance on Page 5)
- Total harmonic distortion (THD) <20%
- 3L to 12L operating temperature: -40°C to +50°C (-40°F to +122°F)
- 15L operating temperature: -40°C to +45°C (-40°F to +104°F)
- 18L operating temperature: -40°C to +40°C (-40°F to +104°F)
- 21L operating temperature: -40°C to +35°C (-40°F to +95°F)
- Input power stays constant over life.
- Optional 10KV surge protection device meets a minimum Category C Low operation (per ANSI/IEEE C62.41.2).
- High-efficiency LEDs mounted to metal-core circuit board to maximize heat dissipation
- Components are fully encased in potting material for moisture resistance. Driver complies with FCC standards. Driver and key electronic components can easily be accessed via hinged door.
- Optional integral emergency battery pack provides 90-minutes of constant power to the LED system, ensuring code compliance.
- The fixture delivers 1500 lumens during emergency mode.

**Controls**

- Optional integral passive infrared Bluetooth™ motion sensor and photocell sensor (see page 9 for more details). Fixtures operate independently and can be commissioned via iOS or Android configuration app.
- LSI's AirLink™ wireless control system options reduce energy and maintenance costs while optimizing light quality 24/7 (see page 9 for more details).

**Installation**

- Universal wall mounting plate easily mounts directly to 4" octagonal or square junction box.
- 2 fasteners secure the hinged door, underneath the housing and provide quick & easy access to the electrical compartment for installing/servicing.
- Optional terminal block accepts up to 12 ga. wire.

**Warranty**

- LSI luminaires carry a 5-year limited warranty. Refer to <https://www.lsi.com/resources/terms-conditions-warranty/> for more information.
- 1 Year warranty on Battery Back-up option.

**Listings**

- Listed to UL 1598 and UL 8750.
- Meets Buy American Act requirements.
- IDA compliant, with 3000K or lower color temperature selection.
- Title 24 Compliant; see local ordinance for qualification information.
- Suitable for wet Locations.
- IP65 rated luminaire per IEC 60598.
- 3G rated for ANSI C136.31 high vibration applications when pole mounted (using optional XPM-A bracket) or wall mounted.
- IK08 rated luminaire per IEC 60626 mechanical impact code

**Specifications and dimensions subject to change without notice.**

Page 1/7 Rev. 08/18/21 SPEC.1024.C.0623

Catalog #: \_\_\_\_\_ Project: \_\_\_\_\_  
Prepared By: \_\_\_\_\_ Date: \_\_\_\_\_ Type: \_\_\_\_\_

## Mirada Medium Wall Sconce (XWM) Outdoor Wall Sconce

IP65 IK08

**ORDERING GUIDE**

TYPICAL ORDER EXAMPLE: **XWM 2 LED 05L 50 UE BRZ ALSC**

Family	Distribution	Light Source	Lumen Package	Color Temperature
XWM - Mirada Medium Wall Sconce	2 - Type 2 3 - Type 3 4 - Type 4 FT - Type 4 Forward Throw	LED	5L - 5,000 6L - 6,000 8L - 8,000 12L - 12,000 15L - 15,000 18L - 18,000 21L - 21,000 Custom Lumen Package†	30 - 3000K 40 - 4000K 50 - 5000K AMB - Phosphor Converted Amber†

Voltage	Finish	Controls	Options
UE - Universal Voltage (120-277V) HV - High Voltage (347-480V)	BLK - Black BRZ - Dark Bronze CNC - Gun Metal Gray GFP - Graphite MSV - Metallic Silver PLP - Platinum Plus SVC - Satin Verde Green WHT - White	(Blank) - None Wireless Controls ALSX - AirLink Sconce Control System ALSCL - AirLink Sconce Control System with 1.2" Motion Sensor ALSXC - AirLink Sconce Control System with 12" Motion Sensor ALBSC3 - AirLink Blue Wireless Motion & Photo Sensor Controller (8" 24" Mt) ALBSC2 - AirLink Blue Wireless Motion & Photo Sensor Controller (25-48" Mt) Standard Controls DIM - 0-10V Dimming (10% - 100%) standard M0811 - Integral Bluetooth™ Motion and Photocell Sensor (8" 24" Mt) M0812 - Integral Bluetooth™ Motion and Photocell Sensor (25-48" Mt) Button Type Photocells PC120 - 120V PC109-277-208-277V PC147 - 347V	(Blank) - None BB - Battery Back-up (8"PC) CWB - Cold Weather Battery Backup (20"PC) SPL - Pole Mounting Bracket SPK - 30KV Surge Protection TB - Terminal Block

**Need more information?** Click here for our glossary

**Have additional questions?** Call us at (800) 436-7800

**FUSING ACCESSORY ORDERING INFORMATION\***

Part Number	Description
FK12P	FK120 - Single Fusing
FK27P	FK270 - Single Fusing
FK34P	FK340 - Single Fusing
DK24P	DK - Double Fusing
DK12P	DK - Double Fusing (240V)
DK48P	DK - Double Fusing (480V)

**MOUNTING ACCESSORY ORDERING INFORMATION\***

Part Number	Description
805742LR	XWM Wet Location Surface Conduit/Wiring Box
75352	1.5" Linear Spoke Kit (2" Recommended per Luminaire)

**FOOTNOTES:**

- Custom lumen and wattage packages available, consult factory. Values are within industry standard tolerances but not UL listed.
- Only available in HV.
- Accessories are shipped separately and field installed.
- IP65 and ALS/ALS/LSL control options are not available in 5, 6, or 8 Lumen packages when high voltage (HV) is specified.
- "CRFP" is field configurable via the LSI app that can be downloaded from your smartphone's native app store. See Fixing options for part code selection.

Page 2/7 Rev. 08/18/21 SPEC.1024.C.0623

Catalog #: \_\_\_\_\_ Project: \_\_\_\_\_  
Prepared By: \_\_\_\_\_ Date: \_\_\_\_\_ Type: \_\_\_\_\_

## Mirada Medium Outdoor LED Area Light

IP66 IK08

**PERFORMANCE (CONT.)**

**DELIVERED LUMENS\***

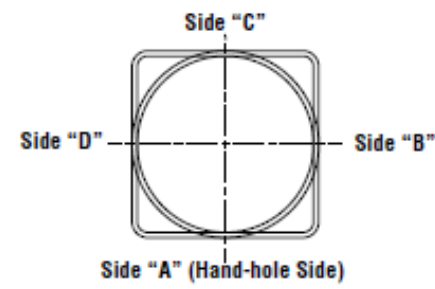
Lumen Package	Distribution	CRI	3000K CCT			4800K CCT			5000K CCT			Wattage
			Delivered Lumens	Efficacy	BIG Rating	Delivered Lumens	Efficacy	BIG Rating	Delivered Lumens	Efficacy	BIG Rating	
42L	2	70	44118	125	85-10-04	44118	125	85-10-04	44118	125	85-10-04	354
	3		58824	126	84-10-05	58824	126	84-10-05	58824	126	84-10-05	
	5W		42055	120	85-10-04	42055	120	85-10-04	42055	120	85-10-04	
	FT		44130	125	84-10-05	44130	125	84-10-05	44130	125	84-10-05	
	FTA		44222	125	84-10-04	44222	125	84-10-04	44222	125	84-10-04	
48L	AM	70	48939	127	84-10-03	48939	127	84-10-03	48939	127	84-10-03	401
	2		65252	122	85-10-04	65252	122	85-10-04	65252	122	85-10-04	
	3		87156	122	84-10-05	87156	122	84-10-05	87156	122	84-10-05	
	5W		65252	117	85-10-04	65252	117	85-10-04	65252	117	85-10-04	
	FT		65252	117	85-10-04	65252	117	85-10-04	65252	117	85-10-04	
48L	AM	70	49021	122	85-10-04	49021	122	85-10-04	49021	122	85-10-04	401
	2		65252	124	84-10-03	65252	124	84-10-03	65252	124	84-10-03	
	3		87156	124	84-10-03	87156	124	84-10-03	87156	124	84-10-03	
	5W		65252	124	84-10-03	65252	124	84-10-03	65252	124		



### Steel Poles - Square Straight

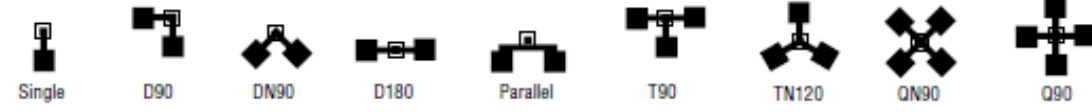
#### DRILLING LOCATIONS

Sides	A	B	C	D
HANG-HOLE	X			
Single	X			
D180	X	X		X
D90	X		X	X
T90	X	X		X
TN120	X	X	X	X
D90	X	X	X	X
Single FBO	X			
Double FBO	X	X		X

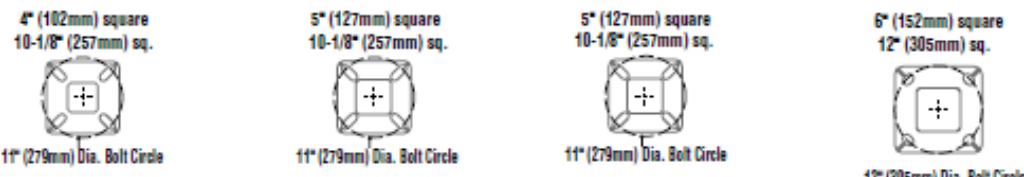


**NOTES:**  
 1- Two locations will be 45° to the left and right of Side A.  
 2- Other two locations will be 120° to the left and right of Side A.  
 3- Two locations will be 45° to the left and right of Side A and two locations will be 120° to the left and right of Side A.  
 Consult factory for custom variations. Standard 5F and 6F pole preparations are located 3/4 of the height of the pole from the base, except on 20' poles. Maximum height for 5F and 6F pole preparations on 20' poles is 15' from the base.

#### FIXTURE CONFIGURATIONS



#### BOLT CIRCLE



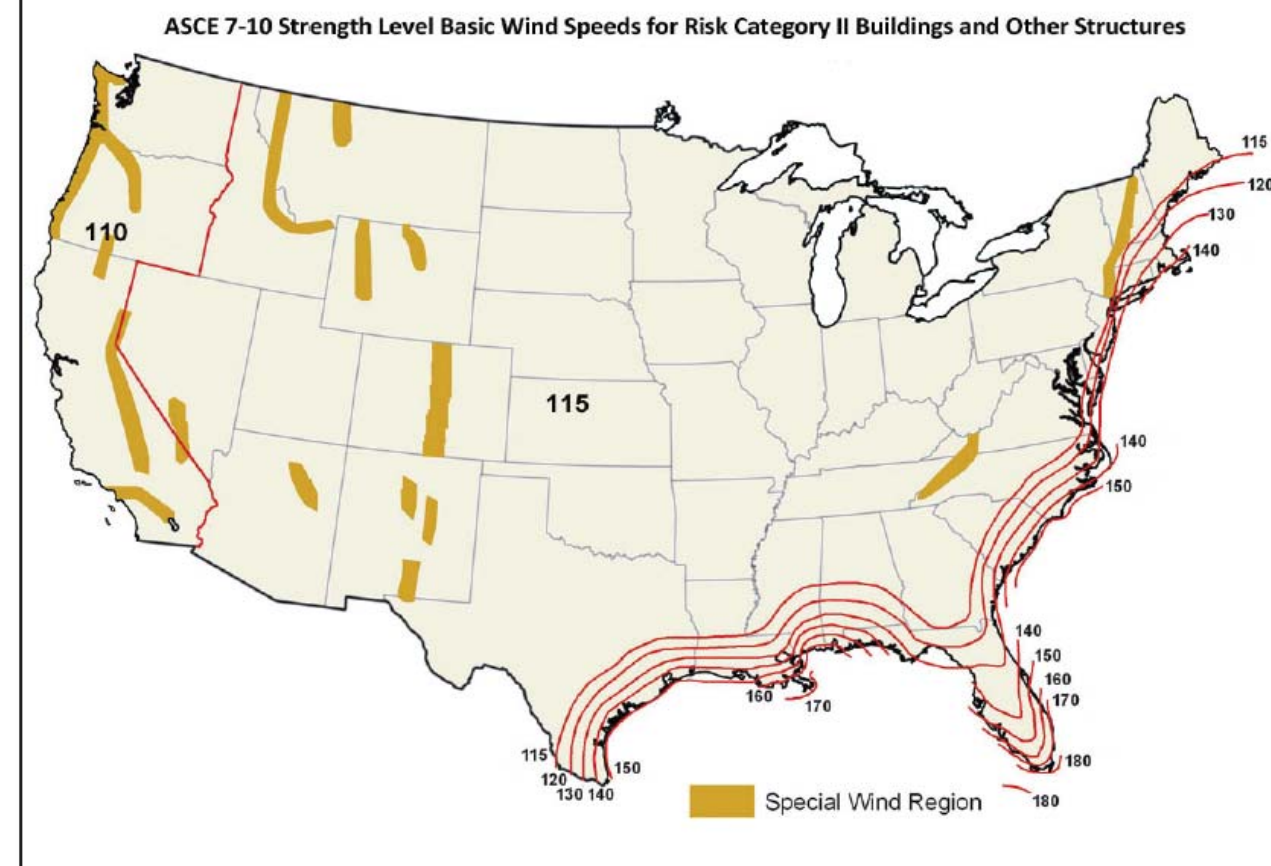
Bolt Circle Designator	B	C	D	S
Bolt Circle	8"-11" (203mm-279mm)	8"-11" (203mm-279mm)	8"-11" (203mm-279mm)	8"-11" (203mm-279mm)
Anchor Bolt Size	3/4" x 3/4" (19mm x 19mm)	3/4" x 3/4" (19mm x 19mm)	3/4" x 3/4" (19mm x 19mm)	3/4" x 3/4" (19mm x 19mm)
Anchor Bolt Projection	3-1/4" (83mm)	3-1/4" (83mm)	3-1/4" (83mm)	3-1/4" (83mm)
Base Plate Opening to Windway Entry	3-5/8" (92mm)	3-5/8" (92mm)	3-5/8" (92mm)	3-5/8" (92mm)
Base Plate Dimensions	10-1/8" sq. x 3/4" Bk. (257mm x 19mm)	10-1/8" sq. x 3/4" Bk. (257mm x 19mm)	10-1/8" sq. x 3/4" Bk. (257mm x 19mm)	12" sq. x 1-1/8" Bk. (305mm x 29mm)
Pole Gauge	11	11	7	7

Note: Base plate illustrations may change without notice. Do not use for setting anchor bolts. Consult factory for the appropriate anchor bolt template.

LSI Industries Inc. 10000 Alliance Rd. Cincinnati, OH 45242 • www.lsi-industries.com  
 (513) 372-3200 • ©2020 LSI Industries Inc. All Rights Reserved. Specifications subject to change without notice.

Page 3/5 Rev. 04/02/21  
 SPEC.1076.A.9929

#### WINDSPEED MAP FOR ASCE 7-10



Wind Speed Map and Pole EPAs are based on ANSI/ASCE 7-10. Please inform LSI if your local code requirements differ; LSI can supply calculations to your code requirements.

#### NOTES:

- Values are the fastest-mile speeds at 33 ft. (10 m) above ground for exposure Category 2.
- Linear interpolation between wind speed contours is acceptable.
- When using this map to determine EPA readings, always use high end of range.
- Fixture and pole EPA values are based on wind pressures and forces specified in ANSI/ASCE 7-10.
- Local code may require wind speeds other than those shown on map.

All LSI Industries' poles are guaranteed to meet the EPA requirements listed. Pole manufacturer is not responsible if a pole order has a lower EPA rating than the indicated wind-loading zone where the pole will be located. **CAUTION:** This guarantee does not apply if the pole/bracket/fixture combination is used to support any other items such as flags, pennants, or signs, which would add stress to the pole. LSI Industries cannot accept responsibility for harm or damage caused in these situations.



Project Name \_\_\_\_\_ Fixture Type \_\_\_\_\_ 45071  
 Catalog # \_\_\_\_\_ LSI INDUSTRIES INC. © 2017



### Steel Poles - Square Straight

#### ORDERING GUIDE

TYPICAL ORDER EXAMPLE: 4SQ B3 S11G 24 S P L P D G P

Pole Series	Mounting Method	Material	Height	Mounting Configuration	Pole Finish	Options
4SQ - 4" x 4" Square Straight Pole	Ball-On Mount - See pole selection guide for patterns and fixture details.	S11G - 11 Ga. Steel (602 and 552 only)	8'	S - Single/Patella	BFZ - Bronze	GA - Galvanized Anchor Bolts
5SQ - 5" x 5" Square Straight Pole	B3 - 3" Reduced Drilling Pattern	S07G - 07 Ga. Steel	10'	D - Double	BLK - Black	SP - Single/Flood
	B2 - 2" Reduced Drilling Pattern		12'	W - Weather Plus	WHI - White	DF - Double/Flood
			14'	TN - Tenon	WHT - White	DP - DuraGrip Plus
			16'	TC - Top Cap	SVG - Salt Water Green	LAP - Lead Anchor Bolts
			18'	OC - Quad	QPT - Graphite	CRK - Corrosal Raincoat
			17'	N - Tenon Mount (Standard tenon size is 3/8" O.D.)	MSR - Metallic Silver	
			17'		SCA - Admate Bronze	
			22'			
			22'			
			24'			
			26'			
			28'			
			30'			
			32'			
			34'			
			36'			
			38'			

#### Accessory Ordering Information

Description	Order Number	Description	Order Number
4EC - 4" Square Base Cover	1229KCL8	WVDR - 2" Square Pole (Ball-on mount only)	1723B8
5EC - 5" Square Base Cover	1229KCL9	WVDR - 2" Square Pole (Ball-on mount only)	1723B9
102 - Mechanical Drainage Receptacle	1229KCL8		
G1 - Ground Fault Circuit Interrupter	1229KCL8		
M10 - Mounting Hole Plug for use with 3" traditional drill pattern (3 set of 3 plugs)	10236		
M20 - Mounting Hole Plug for use with 2" reduced drill pattern (3 set of 3 plugs)	68126		
M30 - Mounting Hole Plug for use with 1" reduced drill pattern (3 set of 3 plugs)	72681		

**FOOTNOTES:**  
 1- See Area Light Brackets - 3" Reduced Drill Pattern and Area Light Brackets - 5" traditional Drill Pattern spec sheets.  
 2- Pole heights will have +/- 1/2" tolerances.  
 3- See Flood Lighting Brackets section for choice of FBO brackets.  
 4- CR selection must indicate required height and side of pole mounting location. Mounting template required at time of order.

LSI Industries Inc. 10000 Alliance Rd. Cincinnati, OH 45242 • www.lsi-industries.com  
 (513) 372-3200 • ©2020 LSI Industries Inc. All Rights Reserved. Specifications subject to change without notice.

Page 2/5 Rev. 04/02/21  
 SPEC.1076.A.9929

#### Steel Poles - Square Straight

#### WIND SPEED

EPA Information  
 All LSI Industries' poles are guaranteed to meet the EPA requirements listed. LSI Industries is not responsible if a pole order has a lower EPA rating than the indicated wind-loading zone where the pole will be located. **CAUTION:** This guarantee does not apply if the pole/bracket/fixture combination is used to support any other items such as flags, pennants, or signs, which would add stress to the pole. LSI Industries cannot accept responsibility for harm or damage caused in these situations.

Note: Pole calculations include a 1.3 gust factor over steady wind velocity. Example: poles designed to withstand 80 MPH steady wind will withstand gusts to 104 MPH. EPAs are for locations 100 miles away from hurricane ocean lines. Consult LSI for other areas. Note: Hurricane ocean lines are the Atlantic and Gulf of Mexico coastal areas. For applications in Florida or Canada, consult factory.

Use ONLY with "Wind Speed Map for ASCE 7-10"

POLE	Mfg. Height (ft)	Wind (mph)	Designator	Wind Speed (mph)	110 MPH	115 MPH	120 MPH	125 MPH	130 MPH	140 MPH	150 MPH	160 MPH	170 MPH	180 MPH
4" x 4" x 12'	12	11	B	8"-11"	0.75	139	125	113	92	76	63	52	43	36
4" x 4" x 14'	14	11	B	8"-11"	0.75	107	93	83	68	54	44	35	27	21
4" x 4" x 16'	16	11	B	8"-11"	0.75	82	72	64	49	39	32	24	18	14
4" x 4" x 18'	18	11	B	8"-11"	0.75	63	54	47	34	24	16	10	04	04
4" x 4" x 20'	20	11	B	8"-11"	0.75	46	38	32	21	12	08	06	04	04
4" x 4" x 22'	22	11	B	8"-11"	0.75	28	26	27	42	30	20	12	05	04
4" x 4" x 24'	24	11	B	8"-11"	0.75	16	17	18	24	18	12	08	06	06
4" x 4" x 26'	26	11	B	8"-11"	0.75	46	37	30	17	07	06	06	06	06
4" x 4" x 28'	28	7	B	8"-11"	0.75	183	164	149	122	102	85	71	59	50
4" x 4" x 30'	30	7	B	8"-11"	0.75	147	132	118	96	79	63	52	42	34
4" x 4" x 32'	32	7	B	8"-11"	0.75	119	106	93	74	59	48	39	28	21
4" x 4" x 34'	34	7	B	8"-11"	0.75	96	84	74	57	43	32	23	16	12
4" x 4" x 36'	36	7	B	8"-11"	0.75	77	66	57	42	30	20	12	05	04
4" x 4" x 38'	38	7	B	8"-11"	0.75	60	51	43	29	19	13	09	06	06
4" x 4" x 40'	40	7	B	8"-11"	0.75	46	37	30	17	07	06	06	06	06
4" x 4" x 42'	42	7	B	8"-11"	0.75	33	25	18	07	06	06	06	06	06
4" x 4" x 44'	44	7	B	8"-11"	0.75	22	14	08	06	06	06	06	06	06
4" x 4" x 46'	46	11	C	8"-11"	0.75	174	157	141	113	93	77	63	52	42
4" x 4" x 48'	48	11	C	8"-11"	0.75	138	123	109	87	69	55	45	35	25
4" x 4" x 50'	50	11	C	8"-11"	0.75	108	96	84	65	49	37	26	18	11
4" x 4" x 52'	52	11	C	8"-11"	0.75	85	73	63	46	32	21	12	05	04
4" x 4" x 54'	54	11	C	8"-11"	0.75	69	58	49	32	21	12	05	04	04
4" x 4" x 56'	56	11	C	8"-11"	0.75	58	47	38	24	14	08	06	06	06
4" x 4" x 58'	58	11	C	8"-11"	0.75	48	37	28	16	08	06	06	06	06
4" x 4" x 60'	60	11	C	8"-11"	0.75	38	27	18	04	06	06	06	06	06
4" x 4" x 62'	62	7	D	8"-11"	1.00	216	193	173	140	113	92	74	60	48
4" x 4" x 64'	64	7	D	8"-11"	1.00	167	146	126	103	83	65	50	34	22
4" x 4" x 66'	66	7	D	8"-11"	1.00	127	108	93	75	57	42	28	18	12
4" x 4" x 68'	68	7	D	8"-11"	1.00	93	78	66	48	32	21	12	05	04
4" x 4" x 70'	70	7	D	8"-11"	1.00	69	56	44	29	18	09	06	06	06
4" x 4" x 72'	72	7	D	8"-11"	1.00	49	38	29	16	08	06	06	06	06
4" x 4" x 74'	74	7	D	8"-11"	1.00	35	24	16	08	06	06	06	06	06
4" x 4" x 76'	76	7	D	8"-11"	1.00	25	16	08	06	06	06	06	06	06
4" x 4" x 78'	78	7	D	8"-11"	1.00	18	10	06	06	06	06	06	06	06
4" x 4" x 80'	80	7	D	8"-11"	1.00	13	07	06	06	06	06	06	06	06
4" x 4" x 82'	82	7	D	8"-11"	1.00	9	5	4	3	2	1	0	0	0
4" x 4" x 84'	84	7	D	8"-11"	1.00	6	3	2	1	0	0	0	0	0
4" x 4" x 86'	86	7	D	8"-11"	1.00	4	2	1	0	0	0	0	0	0
4" x 4" x 88'	88	7	D	8"-11"	1.00	3	1	0	0	0	0	0	0	0
4" x 4" x 90'	90	7	D	8"-11"	1.00	2	1	0	0	0	0	0	0	0

All LSI Industries' poles are guaranteed to meet the EPA requirements listed. LSI Industries is not responsible if a pole order has a lower EPA rating than the indicated wind-loading zone where the pole will be located. **CAUTION:** This guarantee does not apply if the pole/bracket/fixture combination is used to support any other items such as flags, pennants, or signs, which would add stress to the pole. LSI Industries cannot accept responsibility for harm or damage caused in these situations.

Note:  
 1- Poles shorter than those listed here in for each gauge have EPA ratings equal to or greater than what is provided in this table. To Confirm EPA ratings on anchor poles, contact LSI Industries.  
 2- LSI Industries recommends a vibration damper be ordered with this length.

LSI Industries Inc. 10000 Alliance Rd. Cincinnati, OH 45242 • www.lsi-industries.com  
 (513) 372-3200 • ©2020 LSI Industries Inc. All Rights Reserved. Specifications subject to change without notice.

Page 5/5 Rev. 04/02/21  
 SPEC.1076.A.9929



### Steel Poles Square Straight



Catalog # : \_\_\_\_\_ Project : \_\_\_\_\_  
 Prepared By : \_\_\_\_\_ Date : \_\_\_\_\_

#### QUICK LINKS

Ordering Guide Configurations Dimensions EPA

#### FEATURES & SPECIFICATIONS

##### Pole Shaft

- Straight poles are 4", 5", or 6" square.
- Pole shaft is electro-welded ASTM-A500 Grade C steel tubing with a minimum yield strength of 50,000 psi.
- On Tenon Mount steel poles, tenon is 2-3/8" O.D. high-strength pipe. Tenon is 4-3/4" in length.

##### Hand-Hole

- Standard hand-hole location is 12" above pole base.
- Poles 22' and above have a 3" x 6" reinforced hand-hole. Shorter poles have a 2" x 4" non-reinforced hand-hole.

##### Base

- Pole base is ASTM-A36 hot-rolled steel plate with a minimum yield strength of 36,000 psi.
- Two-piece square base cover is optional.

##### Anchor Bolts

- Poles are furnished with anchor bolts featuring zinc-plated double nuts and washers. Galvanized anchor bolts are optional.
- Anchor bolts conform to ASTM F 1554-07a Grade 55 with a minimum yield strength of 55,000 psi.

##### Ground Lug

- Ground lug is standard.

##### Duplex Receptacle

- Weatherproof duplex receptacle is optional.