


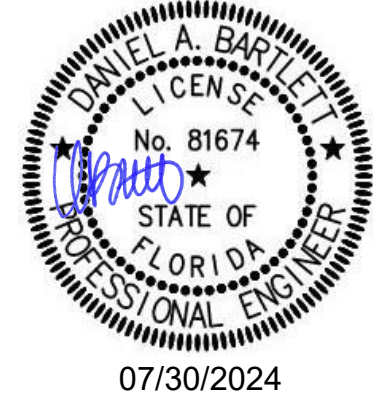
TANK PROPERTIES	
SYSTEM INVERT	10.23' NAVD
SYSTEM OBVERT	15.40' NAVD
TOP OF TANK	15.90' NAVD
SYSTEM DEPTH	62"
INSIDE TANK AREA	20,456 sq.ft.
STORAGE VOLUME @ 14.07' NAVD	68,078 cu.ft. [1.563 ac.ft.]
WATER QUALITY VOLUME	15,436 cu.ft. [0.354 ac.ft.]





CUPOLEX[®]
ENGINEERING SOLUTIONS INC.

55 Administration Rd, Unit 6
Vaughan, ON, Canada L4K 4G9
1-905-669-8190
info@cupolex.ca
www.cupolex.ca



HCA FLORIDA ST

LUCIE HOSPITAL

PORT ST LUCIE, FL


COPYRIGHT © CUPOLEX ENGINEERING SOLUTIONS INC. USE OF THIS DRAWING AND ANY REPRODUCTIONS SHALL BE RESTRICTED TO THE ORIGINAL SITE FOR WHICH IT WAS PREPARED. REPRODUCTION OR RE-USE OF THIS DRAWING FOR ANY OTHER PURPOSE IS STRICTLY PROHIBITED.

NO.	DATE	DESCRIPTION	DRW. CHK.	
			AD	WC
1	04/01/24	CONCEPTUAL DESIGN	AD	WC
2	05/17/24	CONCEPTUAL DESIGN	IT	AD
3	06/24/24	ISSUED FOR PRICING	IT	AD
4	07/29/24	ISSUED FOR DISTRICT REVIEW	AD	DB

DATE: April 1, 2024
DRAWN BY: AD
CHECKED BY: WC
SCALE: 1/16" = 1'-0"
PROJECT No.: 24-71799

CUPOLEX FORMING
PLAN

C1

 **CUPOLEX®**
ENGINEERING SOLUTIONS INC.

55 Administration Rd, Unit 6
Vaughan, ON, Canada L4K 4G9
1-905-669-8190
info@cupolex.ca
www.cupolex.ca

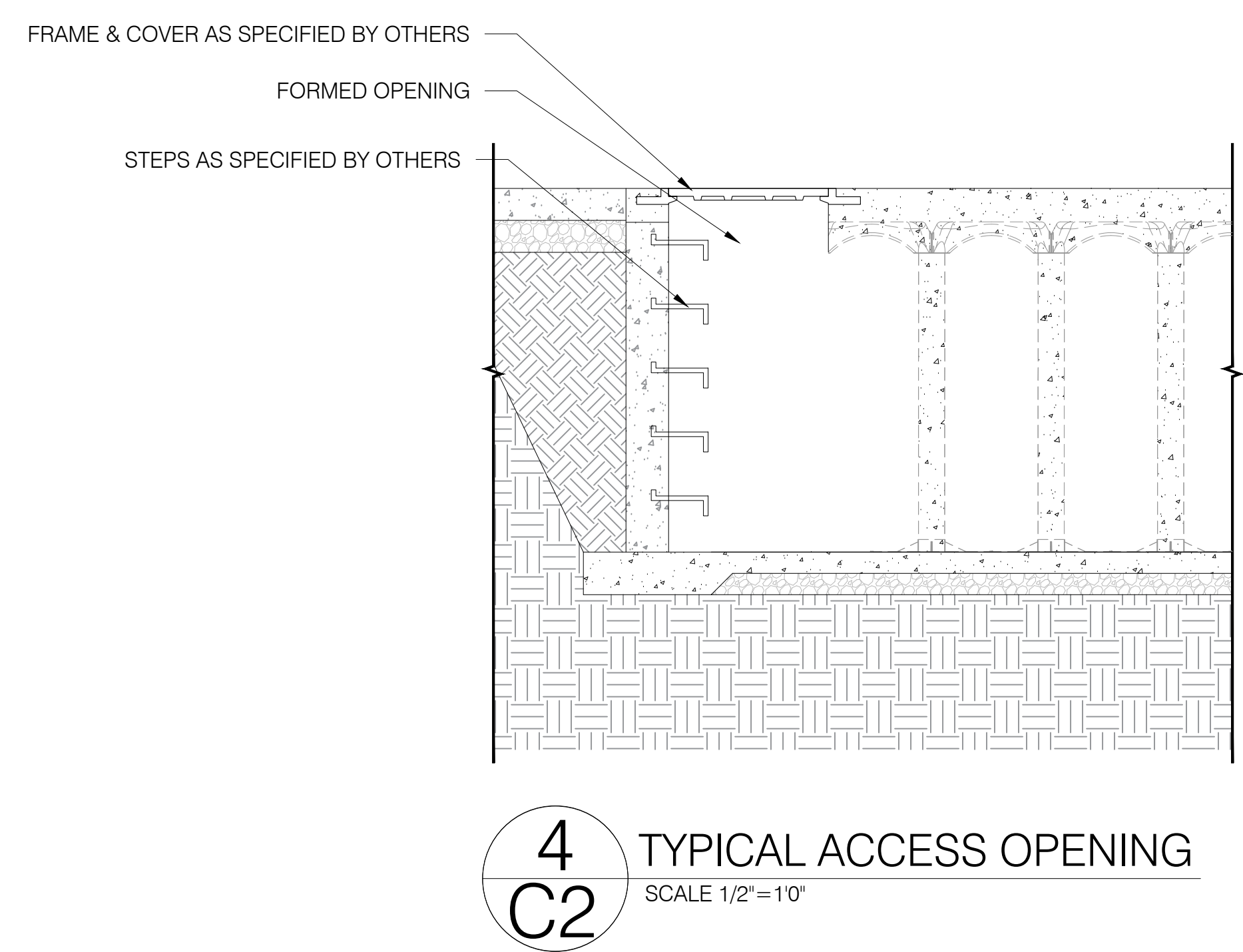
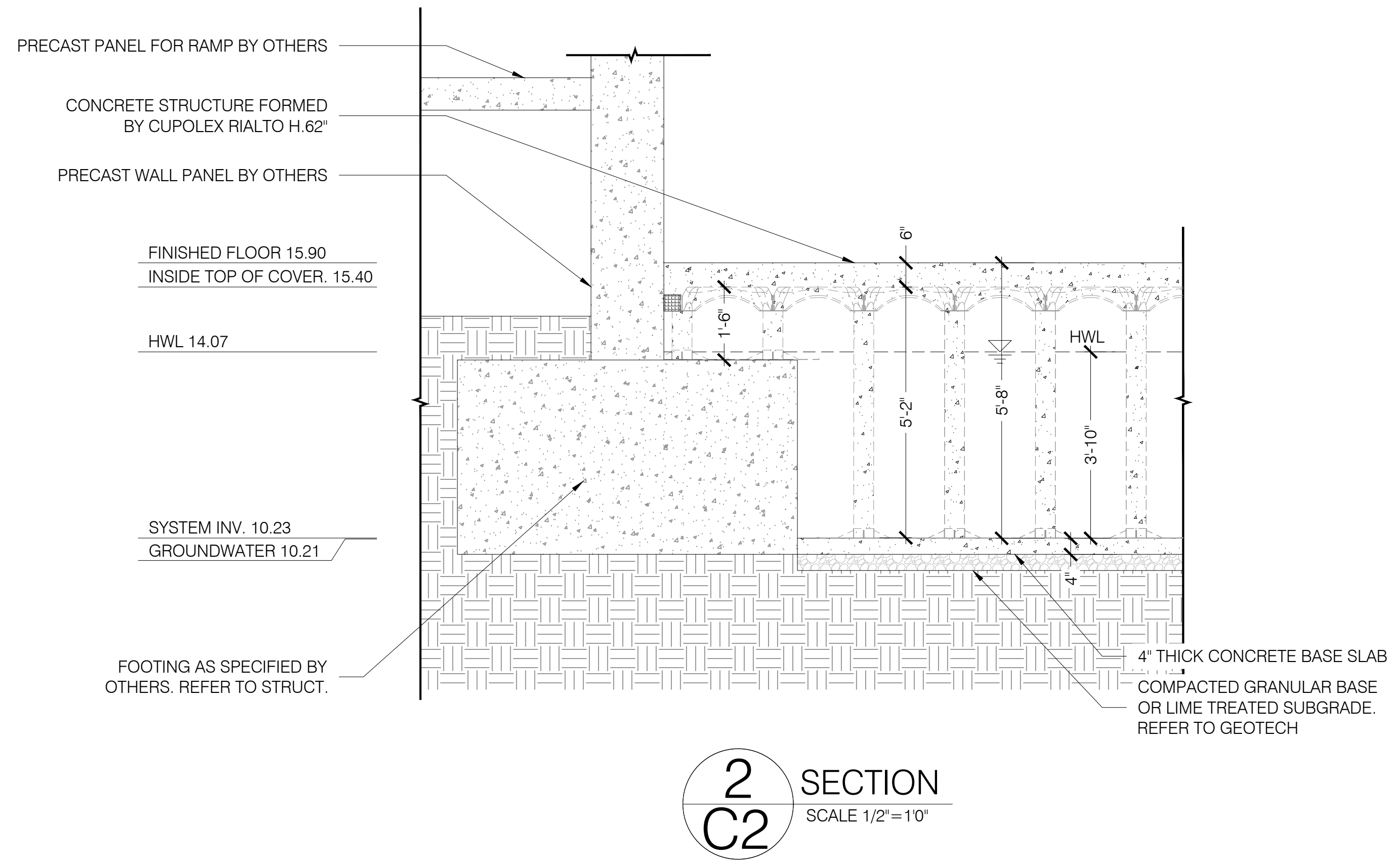


COPYRIGHT (C) CUIPOLEX ENGINEERING SOLUTIONS INC. USE OF THIS DRAWING AND ANY REPRODUCTIONS SHALL BE RESTRICTED TO THE ORIGINAL SITE FOR WHICH IT WAS PREPARED. REPRODUCTION OR RE-USE OF THIS DRAWING FOR ANY OTHER PURPOSE IS STRICTLY PROHIBITED.

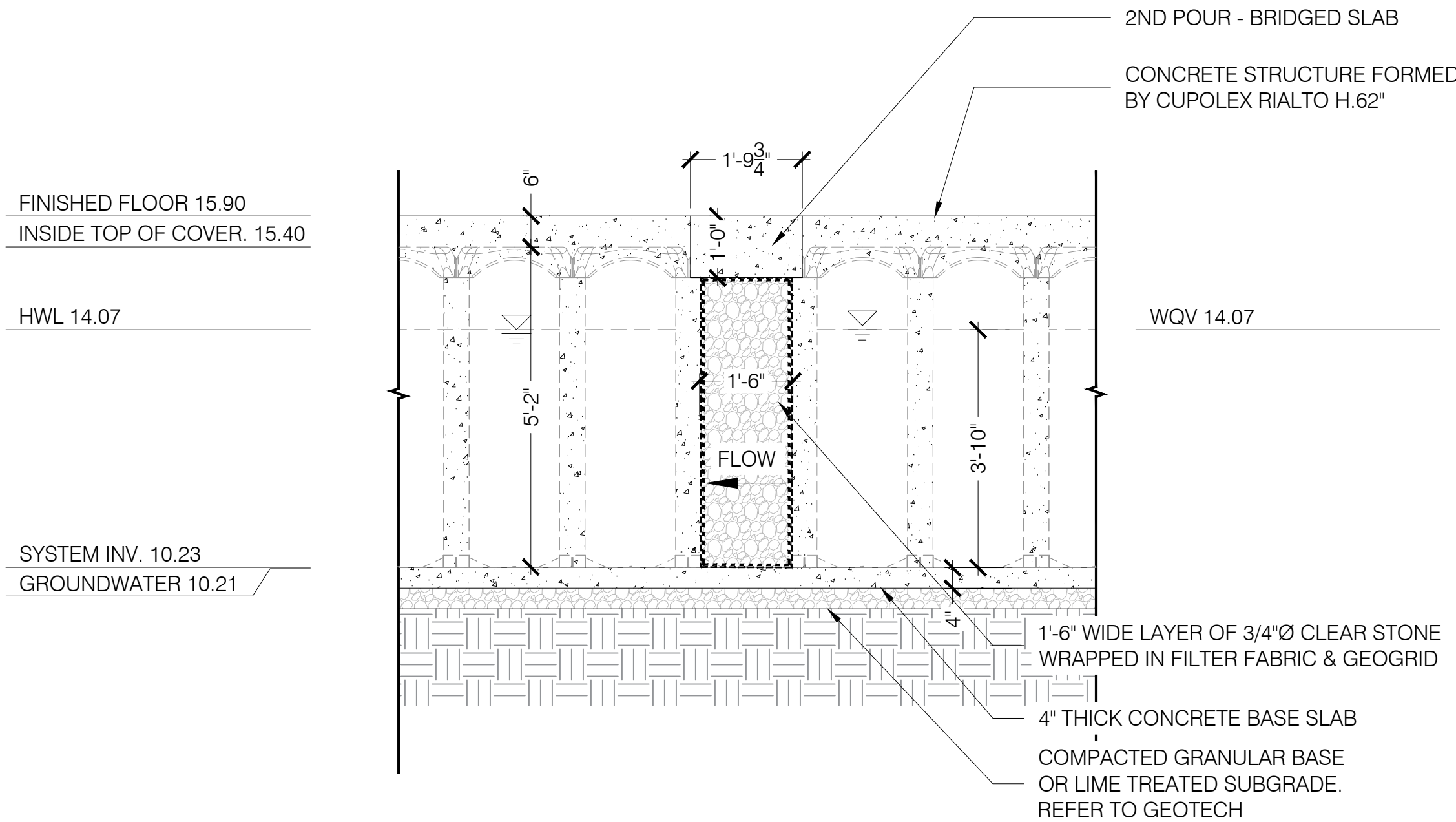
NO.	DATE	DESCRIPTION	DRW.	CHK.
1	04/01/24	CONCEPTUAL DESIGN	AD	WC
2	05/17/24	CONCEPTUAL DESIGN	IT	AD
3	06/24/24	ISSUED FOR PRICING	IT	AD
4	07/29/24	ISSUED FOR DISTRICT REVIEW	AD	DB

DATE: April 1, 2024
DRAWN BY: AD
CHECKED BY: WC
SCALE: 1/2" = 1'-0"
PROJECT No.: 24-71799

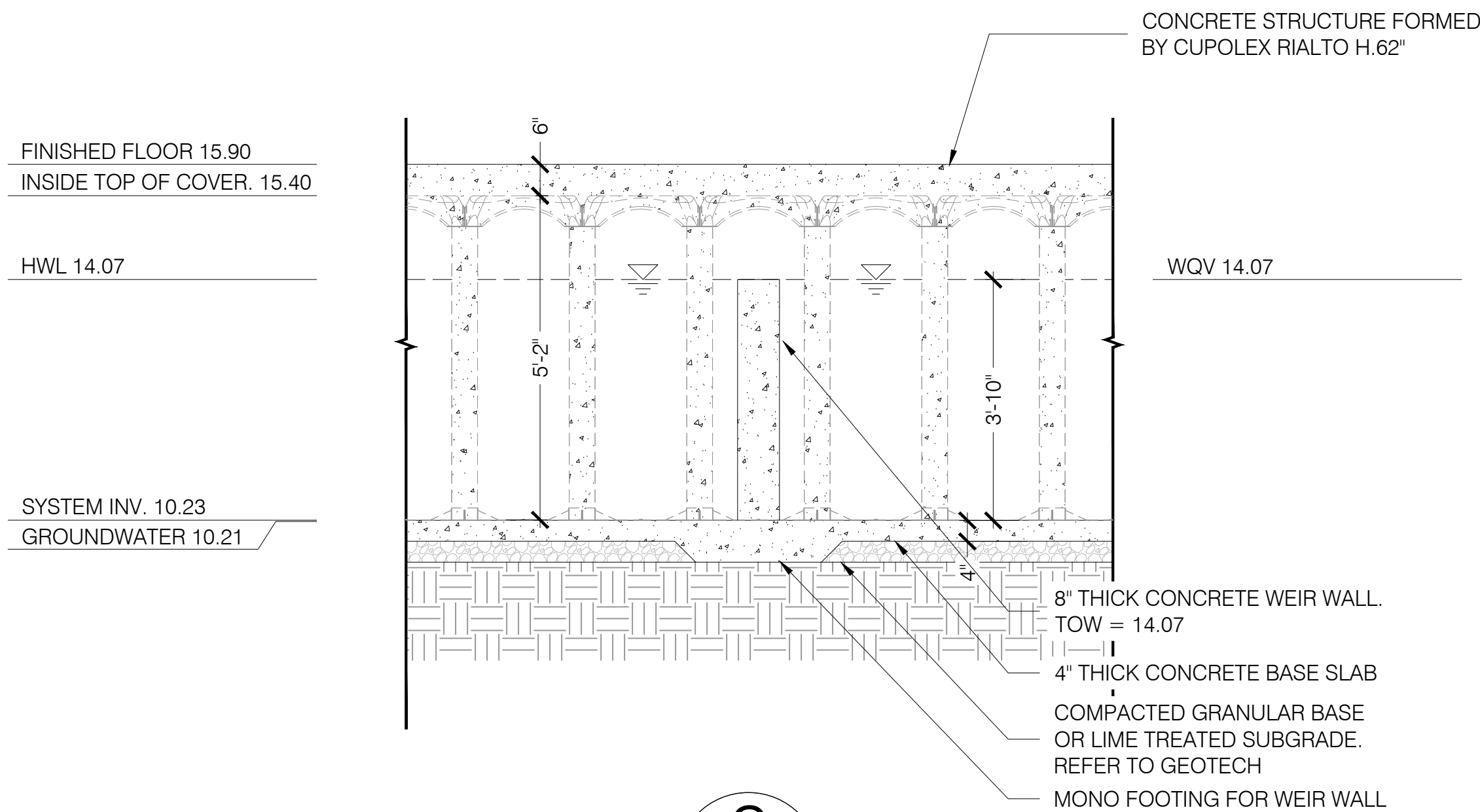
C2



CONTRACTOR TO CONTACT CUPOLEX ENGINEERING SOLUTIONS INC. FOR ENGINEER STAMPED DESIGN DRAWINGS. UNDERGROUND CONCRETE TANK STRUCTURE CAN BE DESIGNED TO SUPPORT ANY LOADING. CIVIL ENGINEER TO SPECIFY LOADING CRITERIA



1 SECTION
C3 SCALE 1/2" = 1'0"



2 SECTION
C3 SCALE 1/2" = 1'0"

HCA FLORIDA ST
LUCIE HOSPITAL
PORT ST LUCIE, FL

COPYRIGHT © CUPOLEX ENGINEERING SOLUTIONS INC. USE OF
THIS DRAWING AND ANY REPRODUCTIONS SHALL BE RESTRICTED
TO THE ORIGINAL SITE FOR WHICH IT WAS PREPARED.
REPRODUCTION OR RE-USE OF THIS DRAWING FOR ANY OTHER
PURPOSE IS STRICTLY PROHIBITED.

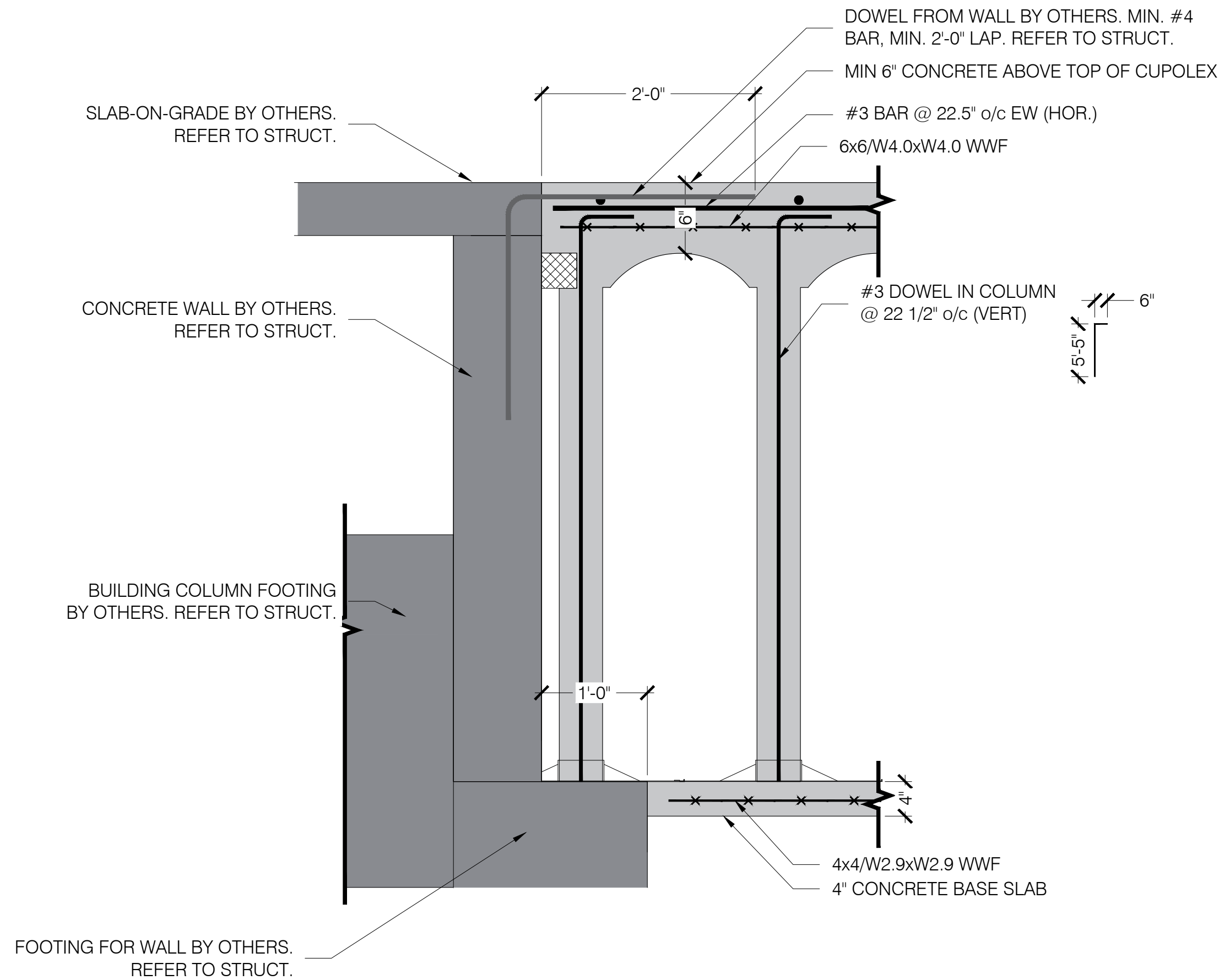
NO.	DATE	DESCRIPTION	DRW.	CHK.
1	04/01/24	CONCEPTUAL DESIGN	AD	WC
2	05/17/24	CONCEPTUAL DESIGN	IT	AD
3	06/24/24	ISSUED FOR PRICING	IT	AD
4	07/29/24	ISSUED FOR DISTRICT REVIEW	AD	DB

DATE: April 1, 2024
DRAWN BY: AD
CHECKED BY: WC
SCALE: 1/2" = 1'-0"
PROJECT No.: 24-71799

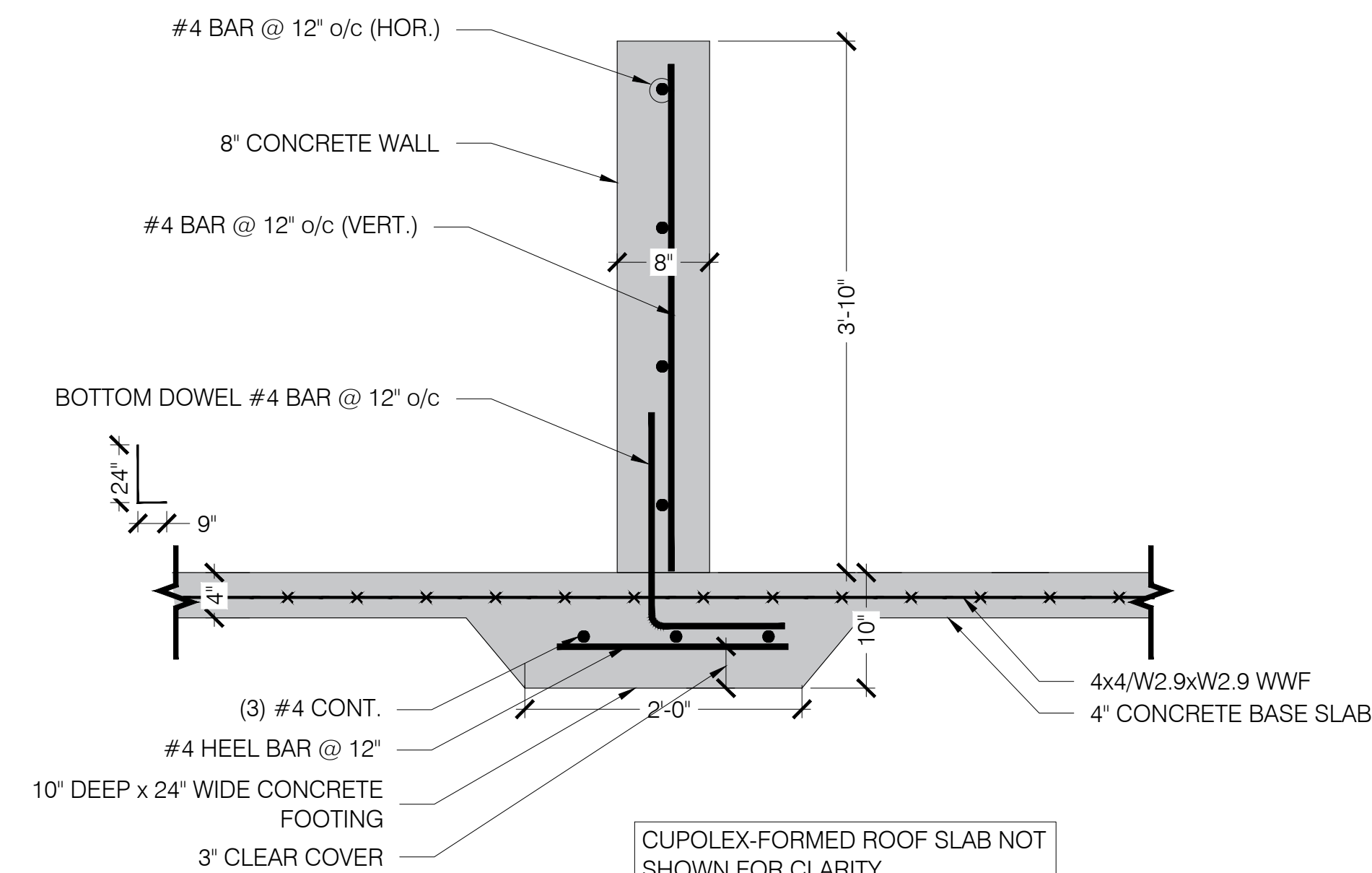
SECTIONS

C3

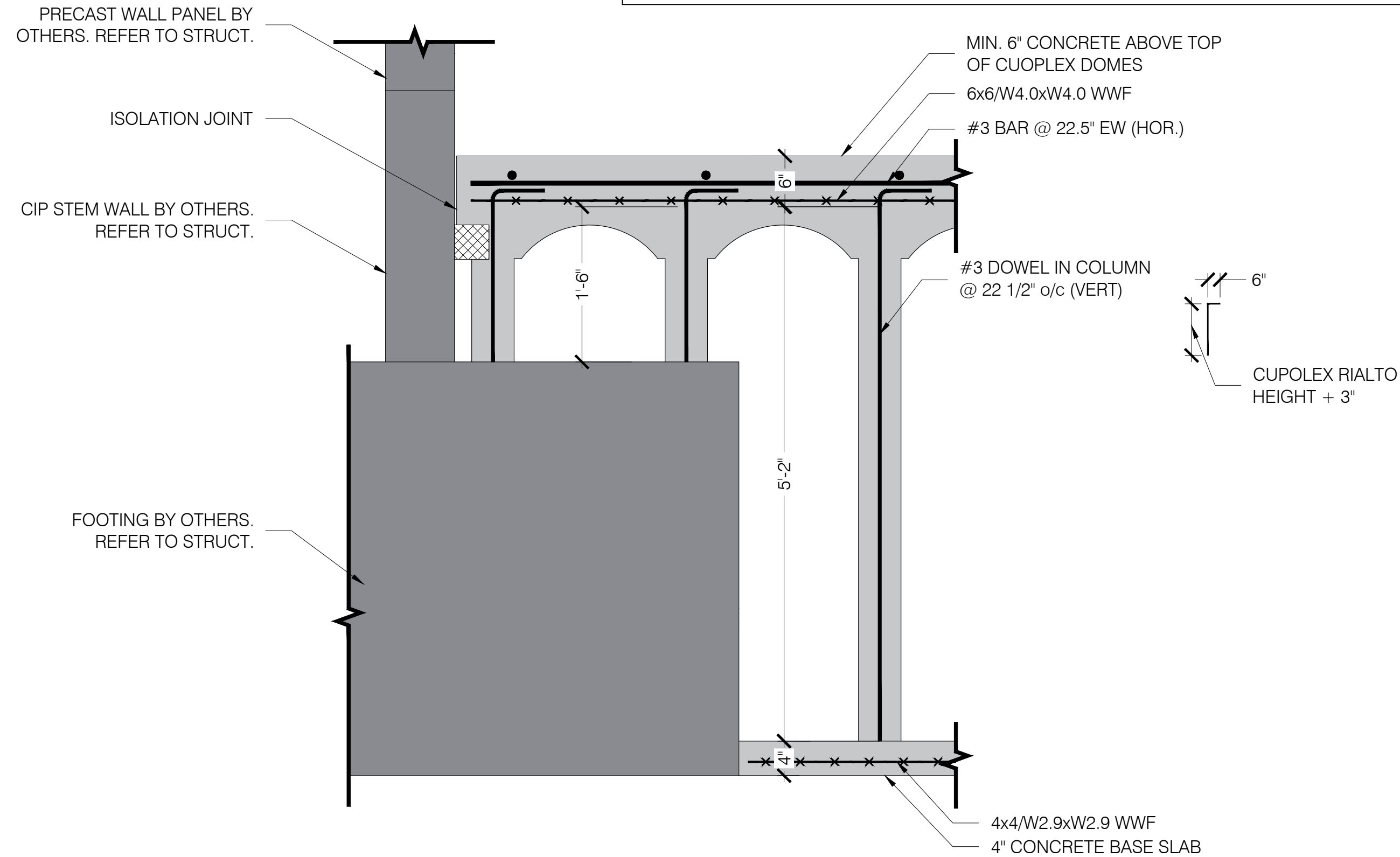
ASSUME CONCRETE TO HAVE
MIN. 4,000 psi f_c (MAX. 0.5 w/cm)



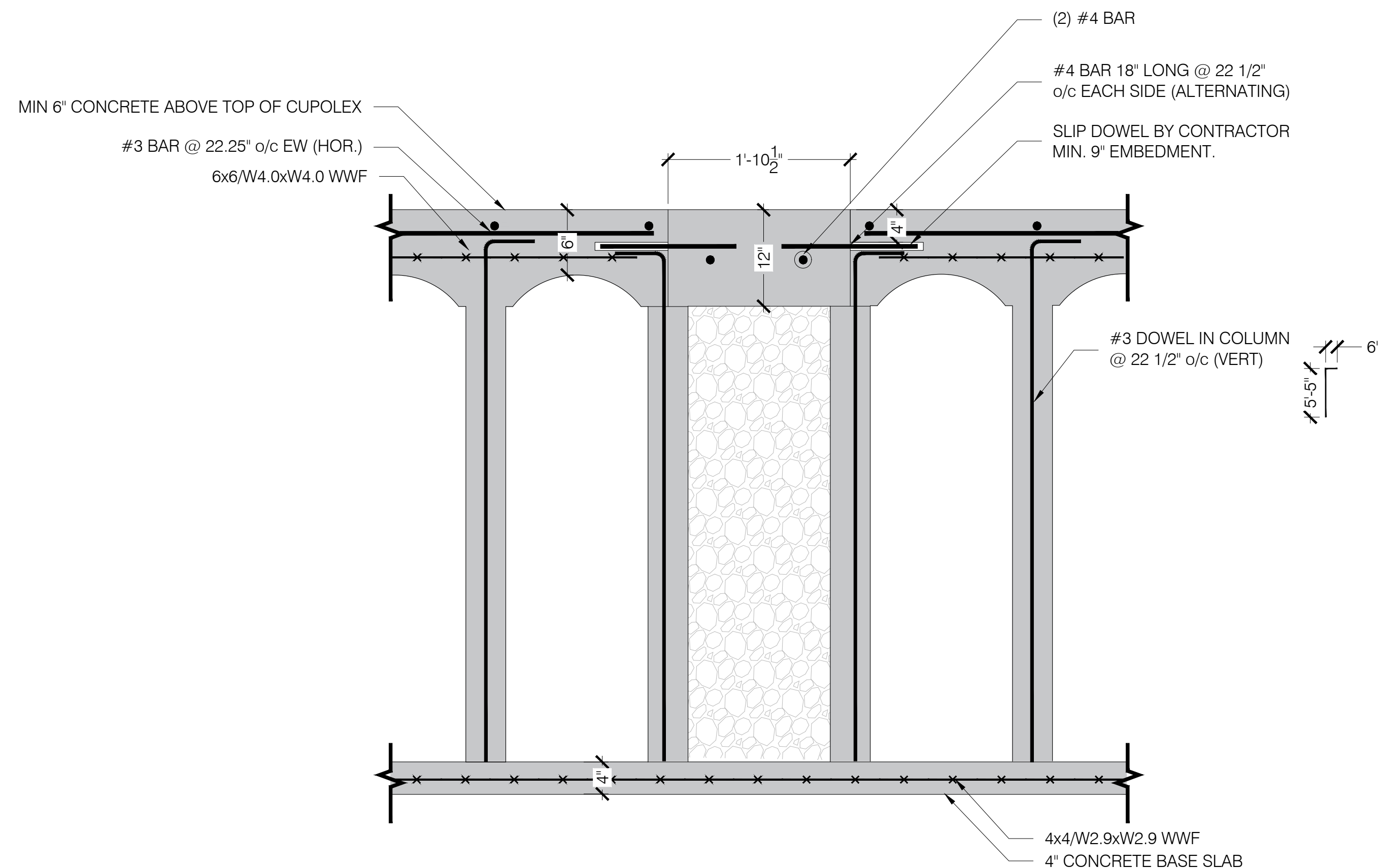
1
C4 PERIMETER FOUNDATION REINF. DETAIL
SCALE 1"=1'0"



3
C4 WEIR WALL REINF. DETAIL
SCALE 1"=1'0"



2
C4 INTERIOR FOUNDATION REINF. DETAIL
SCALE 1"=1'0"



4
C4 STONE TRENCH REINF. DETAIL
SCALE 1"=1'0"

CONTRACTOR TO CONTACT CUPOLEX ENGINEERING SOLUTIONS INC. FOR ENGINEER STAMPED DESIGN DRAWINGS. UNDERGROUND CONCRETE TANK STRUCTURE CAN BE DESIGNED TO SUPPORT ANY LOADING. CIVIL ENGINEER TO SPECIFY LOADING CRITERIA

NO.	DATE	DESCRIPTION	DRW.	CHK.
1	04/01/24	CONCEPTUAL DESIGN	AD	WC
2	05/17/24	CONCEPTUAL DESIGN	IT	AD
3	06/24/24	ISSUED FOR PRICING	IT	AD
4	07/29/24	ISSUED FOR DISTRICT REVIEW	AD	DB