

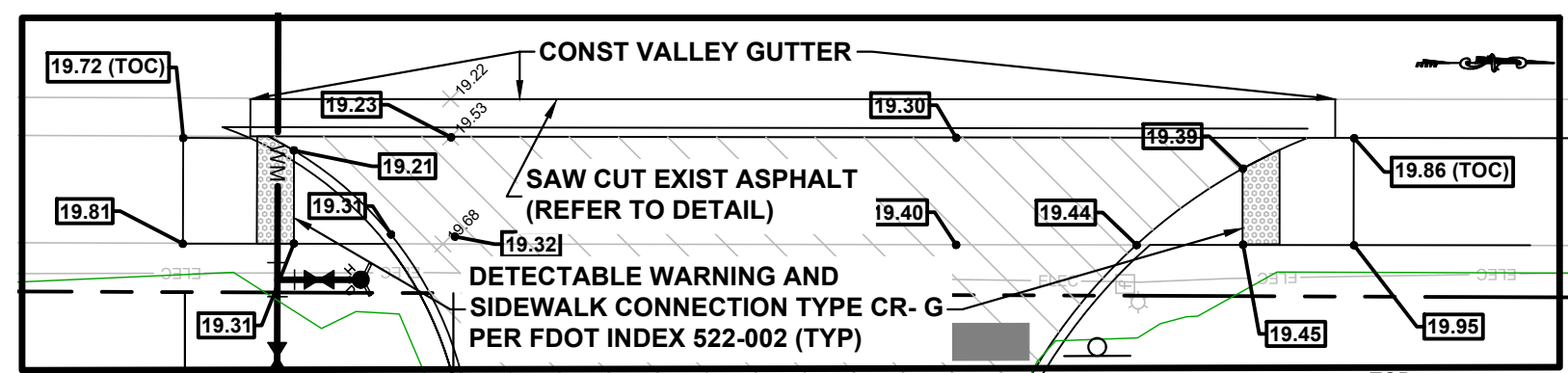
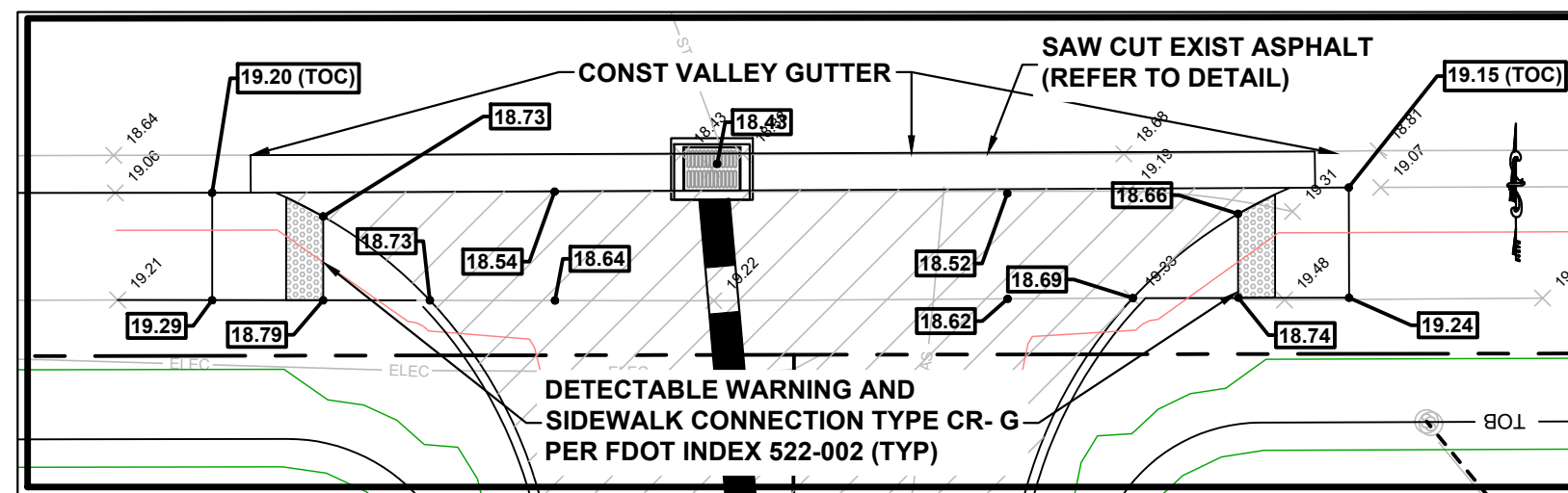
STRUCTURE NAME	STRUCTURE DETAILS
MH-01 CONST. STORMWATER MANHOLE	RIM = 21.46 S INV = 17.58 N INV = 17.58 E INV = 17.58
MH-02 CONST. STORMWATER MANHOLE	RIM = 21.74 N INV = 17.40 S INV = 17.40 E INV = 17.40
MH-03 CONST. STORMWATER MANHOLE	RIM = 21.30 S INV = 17.13 N INV = 17.13 E INV = 17.13
MH-04 CONST. STORMWATER MANHOLE	RIM = 21.03 S INV = 18.03 N INV = 18.03 W INV = 18.03

STRUCTURE NAME	STRUCTURE DETAILS
SD-04 CONST. TYPE C INLET	RIM = 20.50 E INV = 17.00 N INV = 17.00 S INV = 17.00
SD-05 CONST. TYPE C INLET	RIM = 20.65 W INV = 17.12
SD-06 CONST. TYPE C INLET	RIM = 21.50 W INV = 18.29
SD-07 CONST. TYPE C INLET	RIM = 20.00 NW INV = 17.98 E INV = 17.98
SD-08 CONST. TYPE C INLET	RIM = 20.50 N INV = 17.77 SE INV = 17.77
SD-09 CONST. TYPE C INLET	RIM = 21.01 N INV = 17.60 S INV = 17.60
SD-10 CONST. ADS YARD DRAIN	RIM = 21.57 E INV = 17.78
SD-11 CONST. ADS YARD DRAIN	RIM = 21.35 E INV = 17.63 W INV = 17.63
SD-13 CONST. ADS YARD DRAIN	RIM = 21.60 W INV = 18.35

SD-14 CONST. ADS YARD DRAIN	RIM = 21.40 N INV = 18.15 E INV = 18.15
SD-15 CONST. ADS YARD DRAIN	RIM = 22.45 W INV = 18.10
SD-16 CONST. TYPE C INLET	RIM = 21.60 W INV = 17.10 S INV = 17.10
SD-17 CONST. TYPE C INLET	RIM = 21.60 E INV = 16.86 NW INV = 16.86 S INV = 17.67
SD-18 TYPE F INLET TO BE REPLACED WITH TYPE F INLET W/ USF 5106 FRAME AND 6149 GRATE	RIM = 18.43 S INV = 14.77 N INV = 14.77

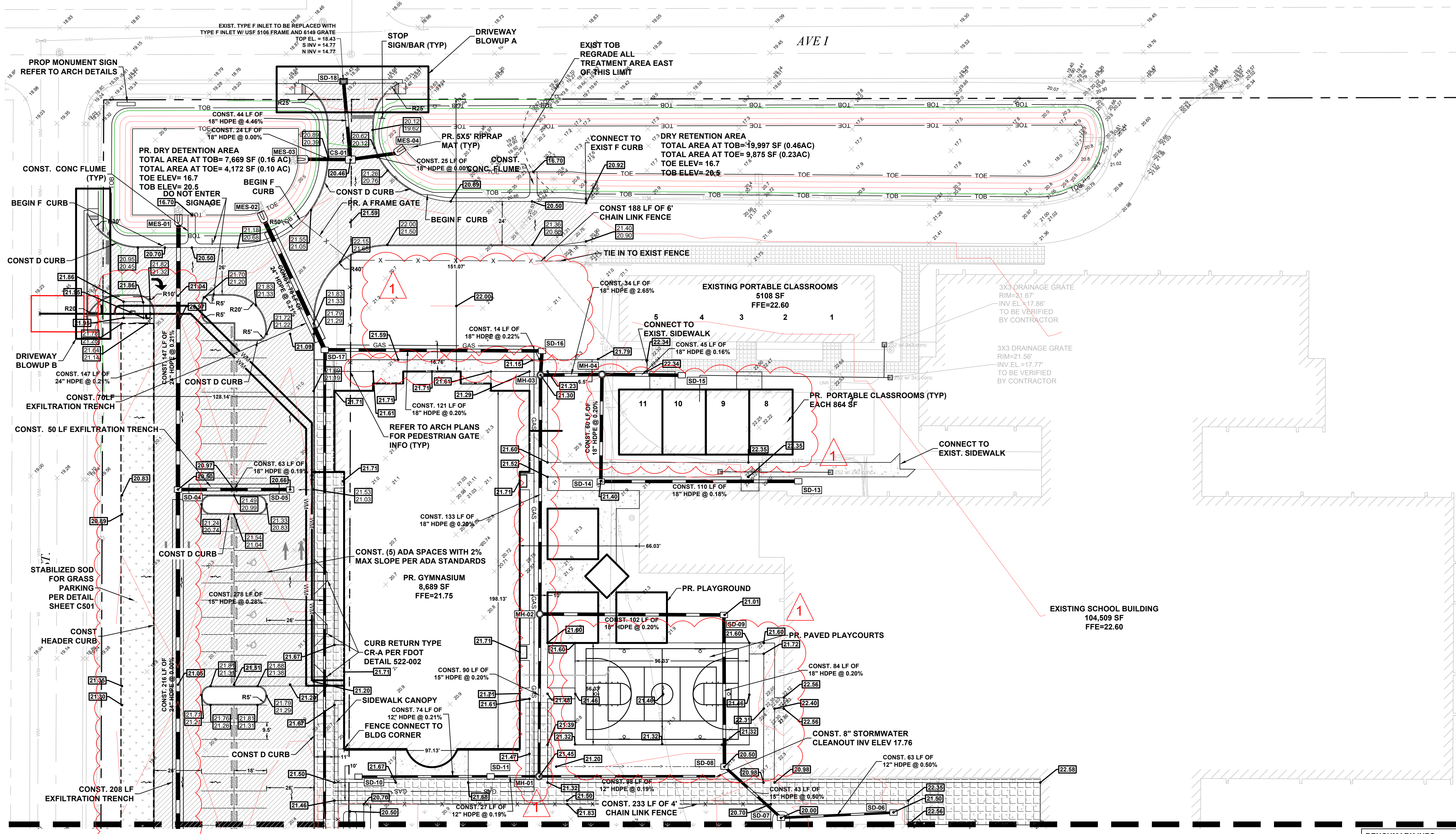
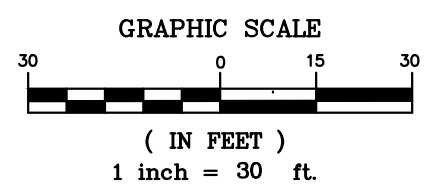
STRUCTURE NAME	STRUCTURE DETAILS
CS-01 CONST. MODIFIED TYPE E INLET	RIM = 20.46 E INV = 16.70 W INV = 16.70 N INV = 16.70

STRUCTURE NAME	STRUCTURE DETAILS	COORDINATES
MES-01 CONST. 24" MES	S INV = 16.70	NORTHING: 1136267.6529 EASTING: 864928.1001
MES-02 CONST. 24" MES	SE INV = 16.70	NORTHING: 1136269.5587 EASTING: 864975.9987
MES-03 CONST. 18" MES	E INV = 16.70	NORTHING: 1136304.2671 EASTING: 864999.7349
MES-04 CONST. 18" MES	W INV = 16.70	NORTHING: 1136307.5177 EASTING: 865047.8321



LEGEND

- HEAVY DUTY ASPHALT PAVING
- LIGHT DUTY ASPHALT PAVING
- CANOPY/COVERED SIDEWALK
- GENERAL CANOPY BID ALTERNATE
- PROJECT BOUNDARY
- PROPOSED SIGN
- CHAIN LINK FENCE
- PROPOSED ELEVATION
- PROPOSED TOP OF CURB ELEVATION
- PROPOSED EDGE OF PAVEMENT ELEVATION



1. REFER TO ARCHITECTURAL PLANS FOR PRECISE DOWNSPOUT LOCATIONS.

DESIGN CRITERIA:	PERMITTED ELEV	PLAN ELEV
CONTROL ELEVATION	= 18.93	= 18.93
MIN. PAVEMENT	= 19.14	= 19.75
MIN. PERIMETER BERM	= 20.46	= 20.46
MIN. FINISHED FLOOR	= 21.35	= 21.75

BENCHMARK INFO:
PROJECT BENCHMARK LOCATED DIRECTLY NORTH OF AVE G ROW LINE, APPROX 100' WEST OF THE SOUTH SCHOOL ENTRANCE.

NOTES:
1) ALL ELEVATIONS AND BENCHMARKS SHOWN HEREON ARE RELATIVE TO THE NORTH AMERICAN VERTICAL DATUM (N.A.V.D.) OF 1988.

ARCHITECTS DESIGN COLLABORATIVE, L.L.C.
ARCHITECTURE | URBAN DESIGN
PLANNING | INTERIORS
10499 SOUTHVIEW MEADOWS ST
TRACON, FL
FORT LEE, FL 34987
TEL: (772) 286-9004
WWW.ADC-ARCHITECTS.NET

CULPEPPER & TERPENING INC.
2883 S.W. 10TH ST
FORT LAUDERDALE, FL 33309
TEL: (772) 286-2007 FAX: (772) 286-2007 WWW.CULPEPPER-TERPENING.COM

STEFAN K. MATTHEWS, P.E.
FL. REG. NO. 38723
DIGITAL SIGNATURE

No.	Description	Date
1	ASR	2/26/2025

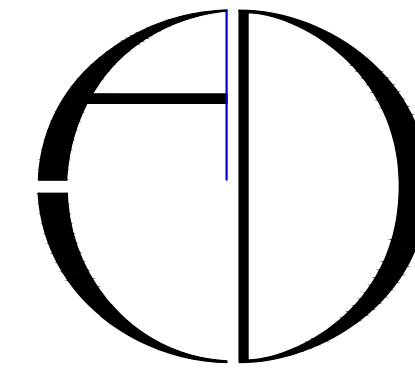
CONTRACT DOCUMENTS FOR:
CA MOORE ELEMENTARY
ADDRESS: 827 NORTH 29TH STREET, FORT PIERCE, FL 34987

DWG IDENTIFICATION		
PROJECT NAME	DATE	CHECKED/DRAWN BY
100% PB	12/04/25	J

THIS DRAWING HAS BEEN REUSED ON THE DATE SHOWN & FOR THE PURPOSES NOTED.

JOB FILE NUMBER:
25-051

C300



ARCHITECTS DESIGN COLLABORATIVE, L.L.C.
ARCHITECTURE | URBAN DESIGN
PLANNING | INTERIORS

10409 SOUTHWEST MEADOWS ST
TRADITION, FL 34627
TEL: (772) 286-9004

www.ADC-ARCHITECTS.NET

PROFESSIONAL SEALS IN THE FOLLOWING STATES:
CALIFORNIA, COLORADO, FLORIDA
GEORGIA, NORTH CAROLINA,
MISSISSIPPI, TEXAS



CULPEPPER & TERPENDING INC.
2806 S. UNIVERSITY AVENUE
FORT WORTH, TEXAS 76104
PHONE: 772.263.2007 FAX: 772.263.2007 www.culpepper.com

THESE DRAWINGS ARE INSTRUMENTS OF SERVICE.
ARCHITECTS DESIGN COLLABORATIVE, L.L.C. HEREBY
PRESERVES ITS COMMON LAW COPYRIGHT AND OTHER
PROPERTY RIGHTS IN THESE PLANS, SPECIFICATIONS,
NOTES, AND DESIGN. THESE
PLANS, SPECIFICATIONS, NOTES AND DESIGN ARE
NOT TO BE COPIED, REPRODUCED, OR OTHERWISE
APPROVED BY ARCHITECTS.
THESE DRAWINGS ARE NOT TO BE SCALED (WRITTEN
DIMENSIONS SHALL CONTROL) AND DISCREPANCY
BETWEEN THESE DRAWINGS AND SPECIFICATIONS AND
OTHER DRAWING AND FIELD CONDITIONS SHALL BE
RESOLVED BY THE ARCHITECT. THESE PLANS ARE NOT TO BE SUBMITTED FOR
CONTRACT VALUES, BONDS & SEALS BY ARCHITECTS.

STEFAN K. MATTHEWS, P.E.
FL. REG. NO. 38723
DIGITAL SIGNATURE

REVISIONS:

No.	Description	Date
1	ASIT #2	5/28/2020

CONTRACT DOCUMENTS FOR:

**CA MOORE
ELEMENTARY**

ADDRESS:
827 NORTH 29TH STREET, FORT PIERCE, FL 34947

DWG IDENTIFICATION

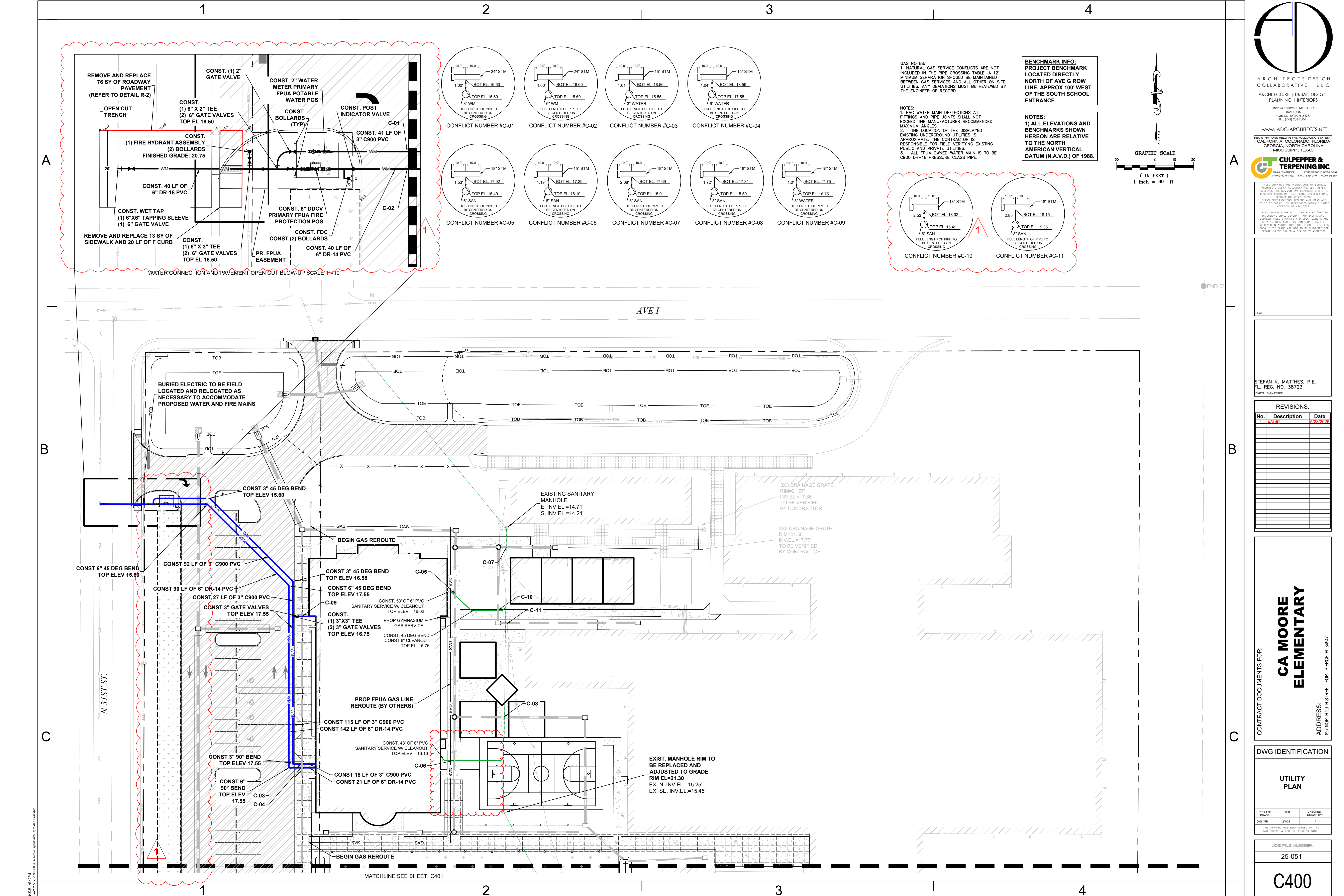
UTILITY PLAN

PROJECT	DATE	CHECKED/ DRAWN BY
100% PB	12/02/20	/

THIS DRAWING HAS BEEN ISSUED ON THE
DATE SHOWN & FOR THE PURPOSES NOTED.

JOB FILE NUMBER:
25-051

C400

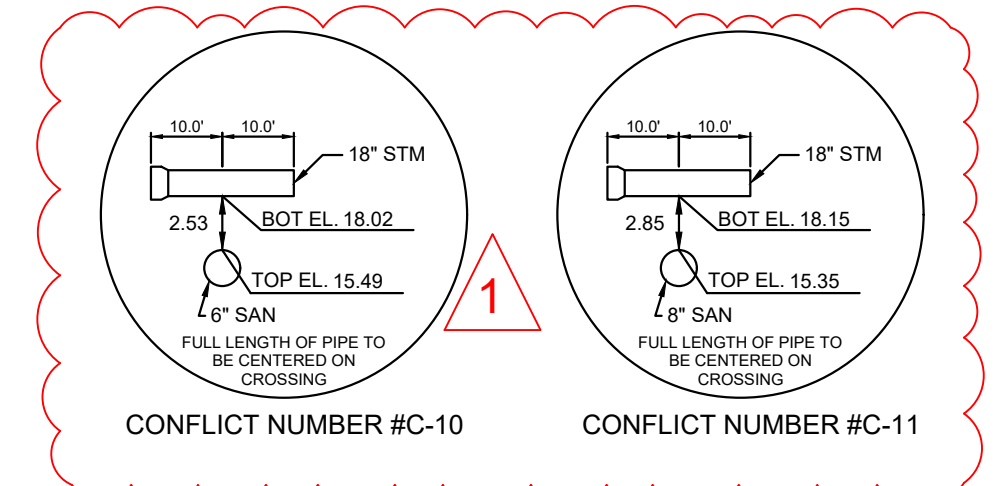
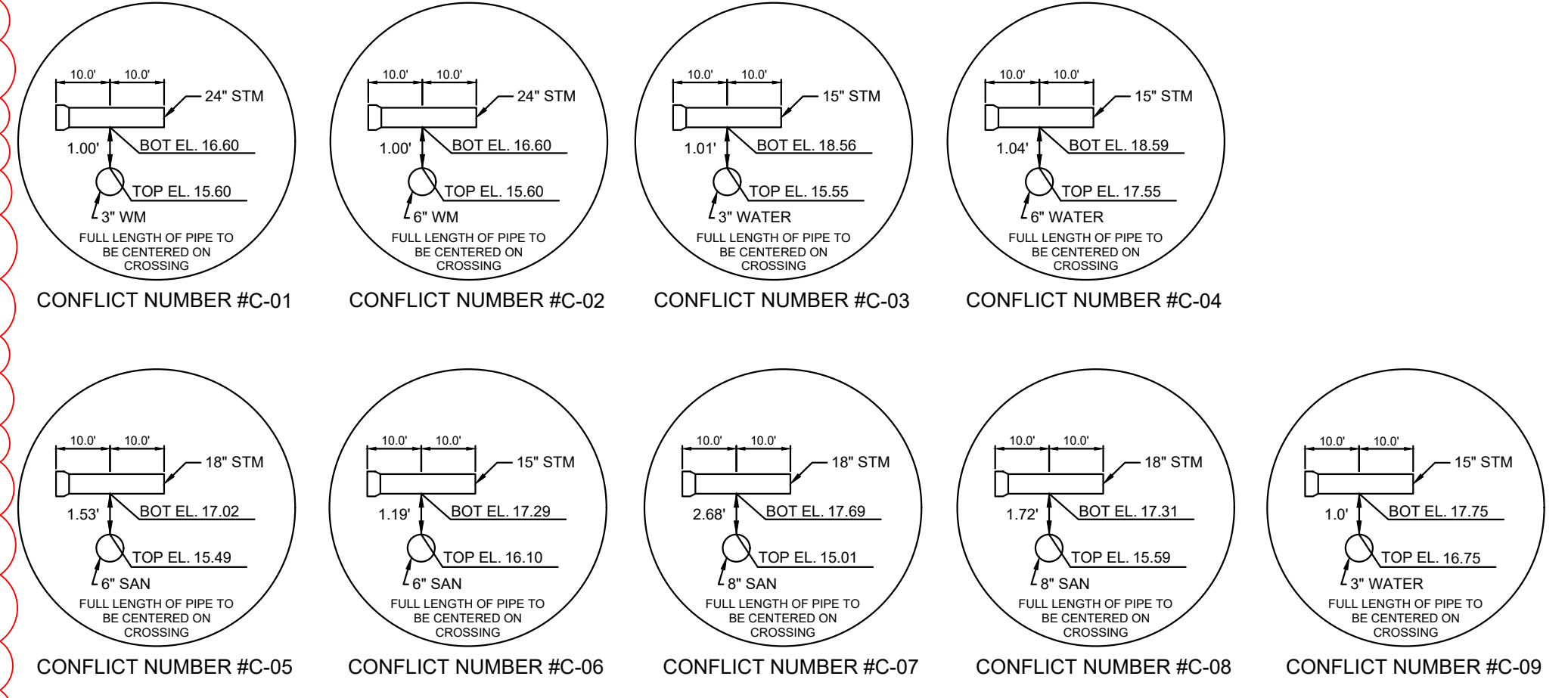
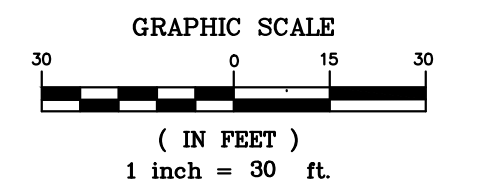


BENCHMARK INFO:
PROJECT BENCHMARK
LOCATED DIRECTLY
NORTH OF AVE G ROW
LINE, APPROX 100' WEST
OF THE SOUTH SCHOOL
ENTRANCE.

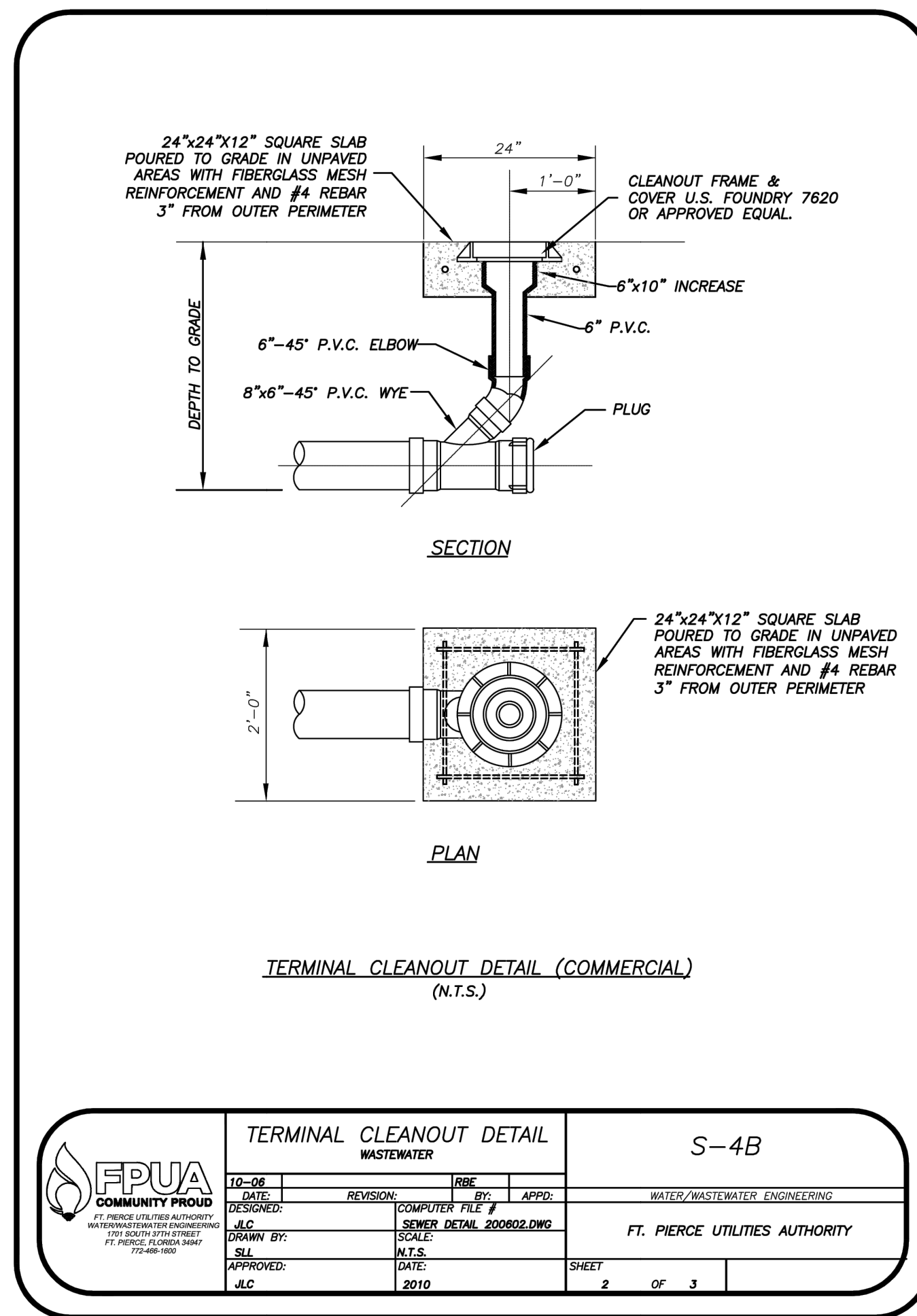
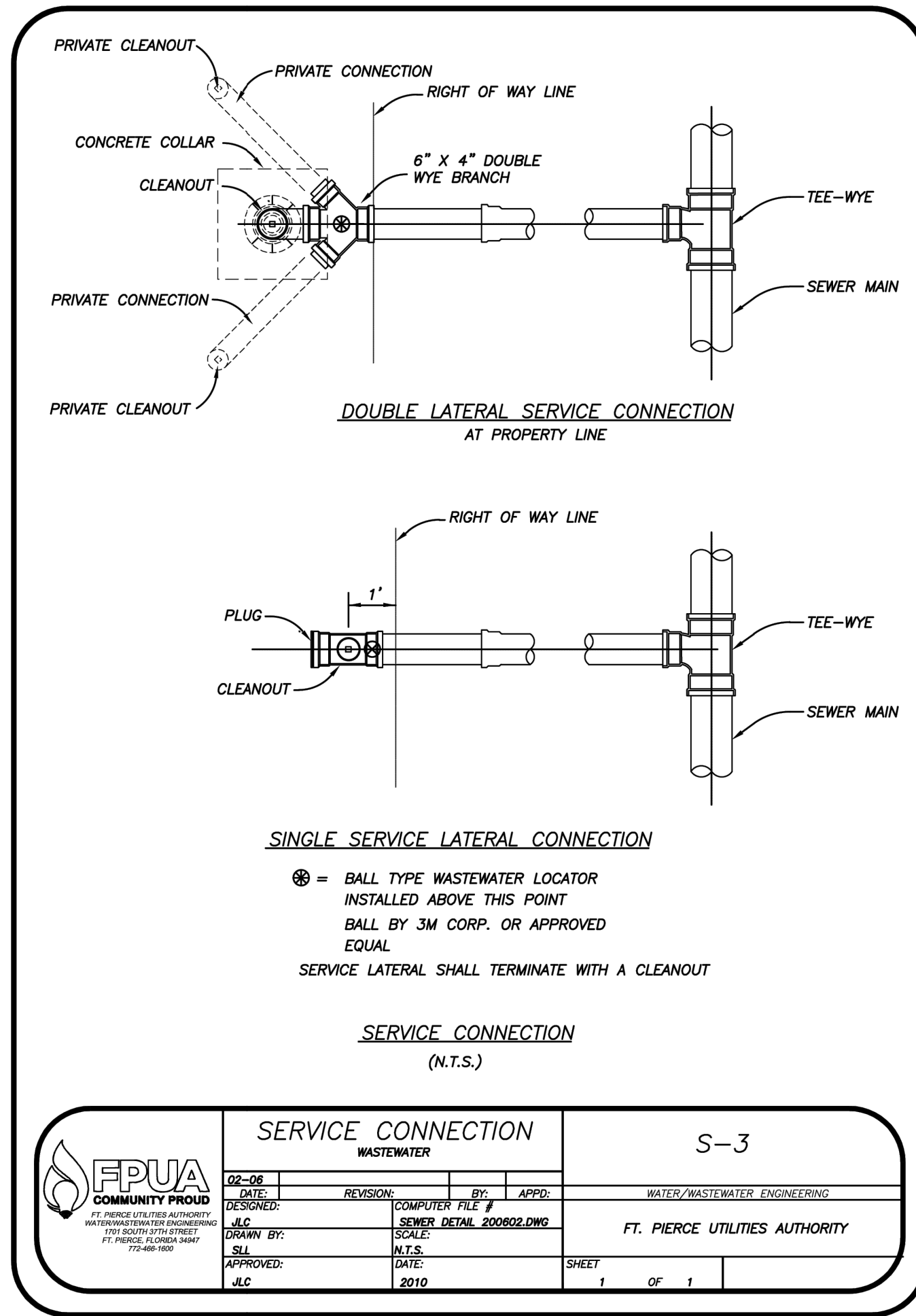
NOTES:
1. ALL ELEVATIONS AND
BENCHMARKS SHOWN
HEREON ARE RELATIVE
TO THE NORTH
AMERICAN VERTICAL
DATUM (N.A.V.D.) OF 1988.

GAS NOTES:
1. NATURAL GAS SERVICE CONFLICTS ARE NOT
INCLUDED IN THE PIPE CROSSING TABLE. A 12"
MINIMUM SEPARATION SHOULD BE MAINTAINED
BETWEEN GAS SERVICES AND ALL OTHER ON SITE
UTILITIES. ANY DEVIATIONS MUST BE REVIEWED BY
THE ENGINEER OF RECORD.

NOTES:
1. PVC WATER MAIN DEFLECTIONS AT
FITTINGS AND PIPE JOINTS SHALL NOT
EXCEED THE MANUFACTURER'S RECOMMENDED
MAXIMUM ANGLES.
2. THE LOCATION OF THE DISPLAYED
EXISTING UNDERGROUND UTILITIES IS
APPROXIMATE. THE CONTRACTOR IS
RESPONSIBLE FOR FIELD VERIFYING EXISTING
PUBLIC AND PRIVATE UTILITIES.
3. ALL FPUA OWNED WATER MAIN IS TO BE
C900 DR-18 PRESSURE CLASS PIPE.



5/28/2020 1:05:08 PM
P:\Projects\2020\100115\CDR - CA Moore Gymnasium\Fig25-051 Utility.dwg



NOTES:
 1) ALL ELEVATIONS AND BENCHMARKS SHOWN HEREON ARE RELATIVE TO THE NORTH AMERICAN VERTICAL DATUM (N.A.V.D.) OF 1988.

ARCHITECTS DESIGN COLLABORATIVE, LLC
 ARCHITECTURE | URBAN DESIGN | PLANNING | INTERIORS
 10489 SOUTHWEST MEETING ST. TRADITION, FLORIDA 34627
 PORT ST. LUCIE, FL 34987
 TEL: (772) 286-9304
 www.ADC-ARCHITECTS.NET

REGISTRATIONS HELD IN THE FOLLOWING STATES:
 CALIFORNIA, COLORADO, FLORIDA, GEORGIA, NORTH CAROLINA, MISSISSIPPI, TEXAS

CULPEPPER & TERPENING INC
 2800 E. 28th STREET, FT. PIERCE, FLORIDA 34901
 PHONE: 772.468.1800 FAX: 772.468.4907 www.cptinc.com

THESE DRAWINGS ARE INSTRUMENTS OF SERVICE. ARCHITECTS DESIGN COLLABORATIVE, LLC HEREBY PRESERVES ITS COMMON LAW COPYRIGHT AND OTHER PROPERTY RIGHTS IN THESE PLANS, SPECIFICATIONS, SECTIONS AND DETAILS. THESE PLANS, SPECIFICATIONS, SECTIONS AND DETAILS ARE NOT TO BE COPIED OR REPRODUCED WITHOUT WRITTEN APPROVAL OF ARCHITECTS DESIGN COLLABORATIVE, LLC. THESE DRAWINGS ARE NOT TO BE SCALED. (WRITTEN DIMENSIONS SHALL CONTROL, AND DISCREPANCY BETWEEN THESE DRAWINGS AND SPECIFICATIONS AND BETWEEN DRAWING AND FIELD CONDITIONS SHALL BE SOLELY THE RESPONSIBILITY OF THE CONTRACTOR. THESE PLANS ARE NOT TO BE SUBMITTED FOR PERMITS UNLESS SIGNED & SEALED BY ARCHITECTS DESIGN COLLABORATIVE, LLC.

SEAL

STEFAN K. MATTHEWS, P.E.
 FL. REG. NO. 38723
 DIGITAL SIGNATURE

REVISIONS:		
No.	Description	Date

CONTRACT DOCUMENTS FOR:

CA MOORE ELEMENTARY

ADDRESS:
 827 NORTH 29TH STREET, FORT PIERCE, FL 34907

DWG IDENTIFICATION		
UTILITY DETAILS		
PROJECT / PHASE	DATE	CHECKED / DRAWN BY
100% FB	12/4/05	/
THIS DRAWING HAS BEEN ISSUED ON THE DATE SHOWN & IS THE PURCHASE NOTICE		
JOB FILE NUMBER:		
25-051		
C601		

MECHANICAL JOINT RESTRAINT NOTES

NOTES:

- THE ENGINEER SHALL BE RESPONSIBLE FOR DETERMINING THE REQUIRED LENGTH TO BE RESTRAINED BASED UPON THE PROJECT AREA SOIL TYPE, PROPOSED TRENCH CONDITIONS AND DEPTH, PRESSURE OF 150 PSI, AND A SAFETY FACTOR OF TWO (2). A DRAWING OF EVERY TYPICAL FITTING ASSEMBLY WITHIN THE PROJECT SHALL BE SUBMITTED WHICH REFLECTS THE RESTRAINT DETAIL PROPOSED FOR USE, INCLUDING LENGTH OF PIPE RESTRAINT.
- REQUIRED RESTRAINED LENGTH CALCULATIONS SHALL ALSO CONSIDER THE CONDITIONS OF OTHER BENDS OR FITTINGS THAT WILL BE LOCATED WITHIN THE CALCULATED RESTRAINED LENGTH (L) OF THE BEND OR FITTING IN QUESTION.
- EVERY JOINT OR FITTING MUST BE RESTRAINED ON BOTH SIDES OF THE BEND AND FOR TEES ALONG THE BEND ALSO.

MECHANICAL JOINT ANCHORING REQUIREMENTS
N.T.S.

MECHANICAL JOINT ANCHORING REQUIREMENTS		M-3	
DATE: 02-09	REVISION: CONCRETE SLAB	SCALE: 1/4" = 1'-0"	APPD: WATER/WASTEWATER ENGINEERING
DESIGNED BY: J.M.	COMPUTER FILE #:	SCALE: MISC. DETAILS 200602.DWG	FT. PIERCE UTILITIES AUTHORITY
DRAWN BY: J.M.	DATE: 2010	SHEET: 1 OF 1	
APPROVED: J.C.			

MECHANICAL JOINT RESTRAINT NOTES

NOTES:

- THE ENGINEER SHALL BE RESPONSIBLE FOR DETERMINING THE REQUIRED LENGTH TO BE RESTRAINED BASED UPON THE PROJECT AREA SOIL TYPE, PROPOSED TRENCH CONDITIONS AND DEPTH, PRESSURE OF 150 PSI, AND A SAFETY FACTOR OF TWO (2). A DRAWING OF EVERY TYPICAL FITTING ASSEMBLY WITHIN THE PROJECT SHALL BE SUBMITTED WHICH REFLECTS THE RESTRAINT DETAIL PROPOSED FOR USE, INCLUDING LENGTH OF PIPE RESTRAINT.
- REQUIRED RESTRAINED LENGTH CALCULATIONS SHALL ALSO CONSIDER THE CONDITIONS OF OTHER BENDS OR FITTINGS THAT WILL BE LOCATED WITHIN THE CALCULATED RESTRAINED LENGTH (L) OF THE BEND OR FITTING IN QUESTION.
- EVERY JOINT OR FITTING MUST BE RESTRAINED ON BOTH SIDES OF THE BEND AND FOR TEES ALONG THE BEND ALSO.

MECHANICAL JOINT RESTRAINT NOTES
N.T.S.

MECHANICAL JOINT RESTRAINT NOTES		M-4	
DATE: 02-09	REVISION: CONCRETE SLAB	SCALE: 1/4" = 1'-0"	APPD: WATER/WASTEWATER ENGINEERING
DESIGNED BY: J.M.	COMPUTER FILE #:	SCALE: MISC. DETAILS 200602.DWG	FT. PIERCE UTILITIES AUTHORITY
DRAWN BY: J.M.	DATE: 2010	SHEET: 1 OF 1	
APPROVED: J.C.			

PAVEMENT RESTORATION
(COUNTY)

NOTES:

- PAVEMENT RESTORATIONS FOR LONGITUDINAL CUTS IN ALL STREETS SHALL BE FULL LANE WIDTH, WITH FULL LANE WIDTH REPAIRING FOR EACH LANE WITHIN THE LIMITS OF THE CUT.
- WHEN AN ARTERIAL OR MAJOR COLLECTOR STREET IS OPEN CUT WITHIN THE LIMITS OF THE ROADWAY INTERSECTION, THE ENTIRE INTERSECTION SHALL BE REPAVED WITH ASPHALT CONCRETE.
- WHEN STREETS OTHER THAN ARTERIALS OR MAJOR COLLECTORS ARE OPEN CUT MORE THAN TWO (2) FEET WITHIN THE LIMITS OF THE ROADWAY INTERSECTION, THE ENTIRE INTERSECTION SHALL BE REPAVED WITH ASPHALT CONCRETE. TWO OPEN CUTS OR LESS AT THE INTERSECTION WILL REQUIRE OVERLAYING WITH ASPHALT ONLY.
- THE CONTRACTOR SHALL BE REQUIRED TO DOCUMENT ALL PAVEMENT MARKINGS PRIOR TO OVERLAY. THE CONTRACTOR SHALL PLACE NEW PAVEMENT MARKINGS AT THE SAME LOCATION. PAVEMENT MARKINGS SHALL BE IN ACCORDANCE TO STATE SECTION 111.
- 2000 PSI CONCRETE SHALL MATCH EXISTING BASE (IF MIN.).

PAVEMENT RESTORATION
(COUNTY)

PAVEMENT RESTORATION		R-2	
DATE: 02-09	REVISION: CONCRETE SLAB	SCALE: 1/4" = 1'-0"	APPD: WATER/WASTEWATER ENGINEERING
DESIGNED BY: J.M.	COMPUTER FILE #:	SCALE: MISC. DETAILS 200602.DWG	FT. PIERCE UTILITIES AUTHORITY
DRAWN BY: J.M.	DATE: 2010	SHEET: 1 OF 1	
APPROVED: J.C.			

FORT PIERCE UTILITIES AUTHORITY
WATER DISTRIBUTION NOTES

- ALL CONSTRUCTION MATERIAL, INSTALLATION AND TESTING SHALL CONFORM TO THE STANDARD SPECIFICATIONS OF THE FORT PIERCE UTILITIES AUTHORITY.
- WATER MAINS WHERE SPECIFIED AS POLYVINYL CHLORIDE (PVC) SHALL CONFORM TO AWWA C-900 OR C-905, PRESSURE CLASS 150, DR (18). WATER MAINS WHERE SPECIFIED AS POLYETHYLENE (PE) SHALL CONFORM TO AWWA C-901 OR C-906, STANDARD CODE DESIGNATION PE-808, PIPE CLASS 200, DIMENSION RATIO (DR) 17 FOR DIRECT BURY, (DR) 11 FOR DIRECTIONAL BORING, AND (DR) 9 FOR 2 INCH AND SMALLER PIPELINES.
- WATER MAIN, WHERE SPECIFIED AS DUCTILE IRON PIPE, SHALL CONFORM TO ANSI/AWWA C151/A21.51 AND SHALL BE PRESSURE CLASS 250 (MINIMUM).
- POLYVINYL CHLORIDE WATER MAIN SHALL BE BLUE IN COLOR OR WHITE IN COLOR WITH BLUE STRIPES. THE USE OF IDENTIFICATION TAPE ATTACHED TO THE TOP OF THE PIPE MAY BE USED IN LIEU OF MARKING ON THE PIPE. ALSO DIP PIPE SHALL REQUIRE THE USE OF IDENTIFICATION TAPE AND THIN WIRE.
- FITTINGS SHALL BE DUCTILE IRON CONFORMING TO ANSI/AWWA C-110/A21.10, CLASS 250 MIN., CEMENT LINED AND FACTORY COATED.
- GATE VALVES SHALL BE MUELLER RESILIENT SEAT, KENNY KEN-SEAL, AMERICAN OR APPROVED EQUAL VALVES SHALL CONFORM TO AWWA C-508.
- WATER LINES SHALL BE BACKFILLED AND COMPACTED IN ACCORDANCE WITH FPUA DESIGN AND CONSTRUCTION STANDARDS. THE CONTRACTOR SHALL SUBMIT CERTIFIED DENSITY TESTS AS REQUIRED BY FPUA ENGINEERING AND THE CITY, COUNTY, FDOT, IN CASES WHERE PAVED AREAS FALL WITHIN THE JURISDICTION OF LOCAL OR STATE AGENCIES, THE COMPACTION REQUIREMENTS SHALL NOT BE LESS THAN THE MINIMUM REQUIRED BY THE APPROPRIATE RESPONSIBLE AGENCY.
- NO FIELD CHANGES OR DEVIATIONS FROM THE DESIGN SHALL BE MADE WITHOUT PRIOR APPROVAL OF THE FPUA ENGINEER AND CITY/COUNTY/FDOT ENGINEER.
- THE CONTRACTOR SHALL NOTIFY FPUA ENGINEERING AND CITY/COUNTY/FDOT ENGINEERING 48 HOURS PRIOR TO COMMENCING CONSTRUCTION.
- A PRE-CONSTRUCTION CONFERENCE BETWEEN THE ENGINEER, THE CONTRACTOR, FPUA, AND CITY/COUNTY/FDOT ENGINEER SHALL BE MANDATORY PRIOR TO COMMENCEMENT OF CONSTRUCTION.
- TRAFFIC CONTROL, BARRICADES, ETC., SHALL BE IN ACCORDANCE WITH THE FLORIDA DEPARTMENT OF TRANSPORTATION STANDARDS AND APPROVED BY THE CITY ENGINEER.
- MINIMUM COVER SHALL BE 36 INCHES EXCEPT AS APPROVED BY THE UTILITIES ENGINEER AND CITY/COUNTY/FDOT ENGINEER. PIPES WITH COVER LESS THAN 30 INCHES SHALL BE CONSTRUCTED OF DUCTILE IRON OR IN PVC CASING.
- DISTURBED AREAS SHALL BE RESTORED IN CONFORMANCE WITH THE APPLICABLE GOVERNING AGENCY REQUIREMENTS.
- EXISTING UTILITIES AND DRAINAGE SHALL BE FIELD VERIFIED PRIOR TO CONSTRUCTION AND PROTECTED BY THE CONTRACTOR.
- WATER MAINS SHALL BE TESTED AND DISINFECTED IN ACCORDANCE WITH THE APPLICABLE FLORIDA DEPARTMENT OF ENVIRONMENTAL PROTECTION AND AWWA C-651 FOR DISINFECTION.

WATER DISTRIBUTION
N.T.S.

WATER DISTRIBUTION		G-1	
DATE: 02-09	REVISION: CONCRETE SLAB	SCALE: 1/4" = 1'-0"	APPD: WATER/WASTEWATER ENGINEERING
DESIGNED BY: J.M.	COMPUTER FILE #:	SCALE: MISC. DETAILS 200602.DWG	FT. PIERCE UTILITIES AUTHORITY
DRAWN BY: J.M.	DATE: 2010	SHEET: 1 OF 2	
APPROVED: J.C.			

FORT PIERCE UTILITIES AUTHORITY
WATER DISTRIBUTION NOTES
CONTINUED.

- THE CONTRACTOR SHALL BE RESPONSIBLE FOR MAINTAINING EXISTING UTILITIES AND DRAINAGE.
- THE CONTRACTOR SHALL FURNISH RECORD DRAWING INFORMATION TO THE ENGINEER INCLUDING LOCATIONS OF VALVES, FITTINGS, SERVICE CONNECTIONS, BLOWOFFS, AIR RELEASE VALVES, AND ANY OTHER PERTINENT INFORMATION NECESSARY TO LOCATE ITEMS CONSTRUCTED UNDER THIS PROJECT, AS REQUIRED BY THE UTILITIES ENGINEER.
- THE CONTRACTOR SHALL TAP EXISTING LINES UNDER THE SUPERVISION OF THE FORT PIERCE UTILITIES AUTHORITY ONLY AFTER TESTING AND DISINFECTION HAS BEEN COMPLETED AND APPROVED ON THE TAPPING VALVE AND SLEEVE.
- WATER MAIN SHALL BE MARKED BY THE USE OF CONTINUOUS 10 GAUGE THIN MULTI STRANDED WIRE (BLUE IN COLOR) AND IDENTIFICATION TAPE WITH "WATER" MARKED ON TAPE, PERMANENTLY ATTACHED TO THE TOP OF THE WATER MAIN IN ACCORDANCE WITH THE FORT PIERCE UTILITIES AUTHORITY SPECIFICATIONS.
- SERVICE TAPS SHALL BE PLACED APPROXIMATELY TEN FEET AWAY FROM GATE VALVES, AS SHOWN, FOR TESTING. FOLLOWING TESTING AND STERILIZATION OF WATER LINE, CONTRACTOR SHALL PLACE A BRASS PLUG IN CORPORATION STOPS AND CURB STOPS SHALL BE REMOVED FROM TESTING LOCATIONS.
- MECHANICAL RESTRAINTS TO BE USED ON ALL FITTINGS AND PLACED IN ACCORDANCE WITH MANUFACTURER'S OR ENGINEER'S RECOMMENDATIONS (WHICHEVER IS MORE STRINGENT) AND FPUA REQUIREMENTS.
- ALL MAINS SHALL BE TESTED AT A MINIMUM OF 150 PSI. TESTING METHODS SHALL CONFORM TO AWWA C-600, - 2 HR MINIMUM TEST

$L = \frac{SD(P)}{140,000} \cdot \frac{1}{2}$
 $L =$ LEAKAGE IN GPH
 $S =$ LENGTH OF PIPE IN FEET
 $D =$ PIPE DIAMETER IN INCHES
 $P =$ TESTING PRESSURE IN PSI

- PRIOR TO ANY TESTING, ALL MAINS 6" IN DIA. AND LARGER SHALL HAVE A SWAB PASSED THRU THE ENTIRE LENGTH OF THE LINE. NOTE: SWAB SHOULD BE PLACED IN 1st JOINT OF NEW LINE. END OF MAIN SHOULD BE "TURNED UP" AT 45% AND EXTENDED SO THAT SWABBING AND A FULL BORE FLUSH CAN BE ACCOMPLISHED. BLOW-OFF ASSY CAN THEN BE PLACED. WHERE LINES BRANCH, SWABS WILL BE PLACED IN BRANCH LINES AND SEQUENTIALLY SWABBED AND FLUSHED.
- A MINIMUM SIX FEET AND PREFERABLY TEN FEET HORIZONTAL SEPARATION SHALL BE MAINTAINED BETWEEN THE WATER MAIN AND ANY WASTEWATER LINES. 6 INCHES MINIMUM VERTICAL SEPARATION IF WATER MAIN IS OVER WASTEWATER AND 12 INCHES IF WATER MAIN IS UNDER SHALL BE MAINTAINED BETWEEN THE WATER MAIN AND ANY WASTEWATER LINES. THE DISTANCE SHALL BE MEASURED FROM OUTSIDE OF PIPE TO OUTSIDE OF PIPE OR STRUCTURE. WHERE THIS MINIMUM SEPARATION CANNOT BE MAINTAINED, THE CROSSING SHALL BE ARRANGED SO THAT THE WASTEWATER PIPE JOINTS AND THE WATER MAIN PIPE JOINTS ARE EQUIDISTANT FROM THE POINT OF CROSSING, AND THE WATER MAIN SHALL BE CONSTRUCTED OF DUCTILE IRON PIPE (DIP) AT THE CROSSING. SUFFICIENT LENGTHS OF DIP MUST BE USED TO PROVIDE A MINIMUM SEPARATION OF 10 FEET BETWEEN ANY TWO JOINTS. ALL JOINTS ON THE WATER MAIN WITHIN 20 FEET OF THE CROSSING MUST BE MECHANICALLY RESTRAINED. A MINIMUM VERTICAL CLEARANCE OF 6 INCHES MUST BE MAINTAINED AT ALL CROSSINGS.
- WHERE A WATER MAIN IS TO BE INSTALLED BELOW A STORM DRAIN PIPE, A MINIMUM OF 6 INCHES VERTICAL CLEARANCE BETWEEN PIPES SHALL BE CONSTRUCTED OF DIP AT THE CROSSING, AND SHALL BE MECHANICALLY RESTRAINED WITHIN 20 FEET OF THE CROSSING.
- CONTRACTOR SHALL COMPLY WITH FLORIDA TRENCH SAFETY ACT REQUIREMENTS.

WATER DISTRIBUTION
N.T.S.

WATER DISTRIBUTION		G-1	
DATE: 02-09	REVISION: CONCRETE SLAB	SCALE: 1/4" = 1'-0"	APPD: WATER/WASTEWATER ENGINEERING
DESIGNED BY: J.M.	COMPUTER FILE #:	SCALE: MISC. DETAILS 200602.DWG	FT. PIERCE UTILITIES AUTHORITY
DRAWN BY: J.M.	DATE: 2010	SHEET: 2 OF 2	
APPROVED: J.C.			

FORT PIERCE UTILITIES AUTHORITY CONSTRUCTION NOTES

- ALL CONSTRUCTION MATERIAL, INSTALLATION AND TESTING SHALL CONFORM TO THE STANDARD SPECIFICATIONS OF THE FORT PIERCE UTILITIES AUTHORITY.
- GRAVITY SEWER MAIN SHALL BE POLYVINYL CHLORIDE SDR-26, GREEN OR WHITE IN COLOR. GRAVITY SEWER MAIN SHALL HAVE LOCATOR TAPE WITH "SEWER" MARKED ON TAPE AND SHALL COATED AT ALL CROSSINGS.
- THE MANHOLE BASE SHALL BE SET ON A FIRM, DRY AND STABLE OR COMPACTED BASE FOUNDATION. IF NECESSARY, THE CONTRACTOR SHALL UTILIZE ROCK TO PROVIDE A FIRM AND SUITABLE MANHOLE BASE FOUNDATION.
- WASTEWATER LINES SHALL BE BACKFILLED AND COMPACTED IN ACCORDANCE WITH FPUA DESIGN AND CONSTRUCTION STANDARDS. THE CONTRACTOR SHALL SUBMIT CERTIFIED DENSITY TESTS AS REQUIRED BY FPUA ENGINEERING AND THE CITY ENGINEERING DEPARTMENT. IN CASES WHERE PAVED AREAS FALL WITHIN THE JURISDICTION OF LOCAL OR STATE AGENCIES, THE COMPACTION REQUIREMENTS SHALL NOT BE LESS THAN THE MINIMUM REQUIRED BY THE APPROPRIATE RESPONSIBLE AGENCY.
- A 1% MINIMUM SLOPE SHALL BE MAINTAINED ON ALL SANITARY SERVICE LATERALS.
- THE CONTRACTOR SHALL FURNISH RECORD DRAWING INFORMATION TO THE ENGINEER CONSISTING OF PIPE SIZES, LOCATION OF SERVICE TEE WYES, DIAMETER OF SERVICES, LOCATION OF ANY FITTINGS, FINAL RIM AND INVERT ELEVATION OF ALL MANHOLES AND ANY OTHER PERTINENT INFORMATION NECESSARY TO LOCATE ITEMS CONSTRUCTED UNDER THIS PROJECT.
- MAINTAIN SIX FEET AND PREFERABLY 10 FEET HORIZONTAL DISTANCE BETWEEN WATER MAINS AND SEWER MAINS AS A MINIMUM.
- WASTEWATER FORCE MAINS, WASTEWATER COLLECTION LINES, AND STORM SEWERS SHOULD CROSS UNDER WATER MAINS WHENEVER POSSIBLE. A MINIMUM VERTICAL DISTANCE OF 12 INCHES BETWEEN THE INVERT OF THE UPPER PIPE AND THE CROWN OF THE LOWER PIPE SHALL BE PROVIDED WHENEVER POSSIBLE. WHERE THIS MINIMUM SEPARATION CANNOT BE MAINTAINED, THE CROSSING SHALL BE ARRANGED SO THAT THE WASTEWATER PIPE JOINTS AND THE WATER PIPE JOINTS ARE EQUIDISTANT FROM THE POINT OF CROSSING, AND THE WATER MAIN SHALL BE CONSTRUCTED OF DUCTILE IRON PIPE (DIP) AT THE CROSSING. SUFFICIENT LENGTHS OF DIP MUST BE USED TO PROVIDE A MINIMUM SEPARATION OF 10 FEET BETWEEN ANY TWO JOINTS. ALL JOINTS ON THE WATER MAIN WITHIN 20 FEET OF THE CROSSING MUST BE MECHANICALLY RESTRAINED. A MINIMUM VERTICAL CLEARANCE OF 6 INCHES MUST BE MAINTAINED AT ALL CROSSINGS.
- A PRE-CONSTRUCTION CONFERENCE BETWEEN THE ENGINEER, THE CONTRACTOR, AND FPUA/CITY/COUNTY/FDOT SHALL BE MANDATORY PRIOR TO THE COMMENCEMENT OF CONSTRUCTION.
- NO FIELD CHANGES OR DEVIATIONS FROM THE DESIGN SHALL BE MADE WITHOUT PRIOR APPROVAL FPUA/CITY/COUNTY/FDOT ENGINEER.
- TRAFFIC CONTROL, BARRICADES, ETC. SHALL BE IN ACCORDANCE WITH THE FLORIDA DEPARTMENT OF TRANSPORTATION STANDARDS.
- CONTRACTOR SHALL NOTIFY FORT PIERCE UTILITIES AUTHORITY 48 HOURS PRIOR TO COMMENCING CONSTRUCTION.
- WASTEWATER FORCE MAIN SHALL BE POLYVINYL CHLORIDE CONFORMING TO AWWA C-900.
- WASTEWATER FORCE MAIN SHALL BE GREEN IN COLOR.
- FITTINGS SHALL BE DUCTILE IRON, CONFORMING TO ANSI/AWWA C-110/A21.10 CLASS 250 MIN. AND INTERIOR EPOXY COATED.
- WASTEWATER FORCE MAIN SHALL BE MARKED BY THE USE OF CONTINUOUS 10 GAUGE THIN WIRE (GREEN IN COLOR) PERMANENTLY ATTACHED TO THE TOP OF THE FORCE MAIN WITH LOCATOR TAPE MARKED "SEWER" ON TAPE IN ACCORDANCE WITH FPUA SPECIFICATIONS.
- MINIMUM COVER SHALL BE 36 INCHES. PIPES WITH COVER LESS THAN 30 INCHES SHALL REQUIRE PRIOR APPROVAL OF THE UTILITIES ENGINEER AND SHALL BE CONSTRUCTED OF DUCTILE IRON PIPE.
- EACH SERVICE LATERAL WILL BE MARKED WITH A LOCATOR BALL AS MANUFACTURED BY SW CORPORATION, OR APPROVED EQUAL AS REQUIRED BY FPUA ENGINEER.
- ALL MANHOLES SHALL HAVE SEWER RAIN GUARDS INSTALLED AS REQUIRED BY FPUA ENGINEER. THE CONTRACTOR SHALL COMPLY WITH THE FLORIDA TRENCH SAFETY ACT REQUIREMENTS.

WASTEWATER CONSTRUCTION NOTES
FPUA REQUIREMENTS

WASTEWATER CONSTRUCTION NOTES		G-2	
DATE: 02-09	REVISION: CONCRETE SLAB	SCALE: 1/4" = 1'-0"	APPD: WATER/WASTEWATER ENGINEERING
DESIGNED BY: J.M.	COMPUTER FILE #:	SCALE: MISC. DETAILS 200602.DWG	FT. PIERCE UTILITIES AUTHORITY
DRAWN BY: J.M.	DATE: 2010	SHEET: 1 OF 1	
APPROVED: J.C.			

ARCHITECTS DESIGN COLLABORATIVE, LLC
ARCHITECTURE | URBAN DESIGN PLANNING | INTERIORS
10489 SOUTHWEST MEETING ST
TRACON, FLORIDA 32908
TEL: (772) 286-9004
WWW.ADC-ARCHITECTS.NET

REGISTRATIONS HELD BY THE FOLLOWING STATES:
CALIFORNIA, COLORADO, FLORIDA
GEORGIA, NORTH CAROLINA
MISSISSIPPI, TEXAS

CULPEPPER & TERPENING INC.
2885 S. 28th Street
P.O. Box 10000
Tallahassee, FL 32310
PHONE: 904.224.3337 FAX: 904.224.4477 WWW.CULPEPPER-TERPENING.COM

THESE DRAWINGS ARE INSTRUMENTS OF SERVICE. ARCHITECTS DESIGN COLLABORATIVE, LLC PRESERVES ITS COMMON LAW COPYRIGHT AND OTHER PROTECTIVE RIGHTS IN THESE PLANS, SPECIFICATIONS, SCHEDULES AND DETAILS. THESE PLANS, SPECIFICATIONS, SCHEDULES AND DETAILS ARE NOT TO BE COPIED OR REPRODUCED WITHOUT WRITTEN APPROVAL OF ARCHITECTS.

THESE DRAWINGS ARE NOT TO BE SCALED. DIMENSIONS SHALL CONTROL, AND DISCREPANCY BETWEEN THESE DRAWINGS AND SPECIFICATIONS AND BETWEEN THEM AND FIELD CONDITIONS SHALL BE SOLELY THE RESPONSIBILITY OF THE CONTRACTOR. THESE PLANS ARE NOT TO BE SUBMITTED FOR PERMITS UNLESS THEY ARE SEALED BY ARCHITECTS.

STEFAN K. MATTHEWS, P.E.
FL. REG. NO. 38723
DIGITAL SIGNATURE

REVISIONS:

No.	Description	Date

CONTRACT DOCUMENTS FOR:
CA MOORE ELEMENTARY
ADDRESS: 827 NORTH 29TH STREET, FORT PIERCE, FL 34947

DWG IDENTIFICATION

PROJECT PHASE:	DATE:	CHECKED/DRAWN BY:
100% PB	12/04/09	/

THIS DRAWING HAS BEEN ISSUED ON THE DATE SHOWN & IS THE PUBLISHED VERSION.

JOB FILE NUMBER:
25-051

C602

NOTES:
1) ALL ELEVATIONS AND BENCHMARKS SHOWN HEREON ARE RELATIVE TO THE NORTH AMERICAN VERTICAL DATUM (N.A.V.D.) OF 1988.

