



(772)631-5709 AA26002573

THESE DRAWINGS CONTAIN ARCHITECTURAL SYMBOLS USED FOR GRAPHIC PURPOSES ONLY. SIZE AND LOCATION MAY VARY TO MEET MANUFACTURER'S SPECIFICATIONS.

DO NOT SCALE DRAWINGS. ANY QUESTIONS ABOUT DIMENSIONS, CONTACT DESIGNER.

AVIATION MANAGEMENT AND REPAIRS FORT PIERCE AIRPORT

START DATE:	09.09.21
NO REVISION/ISSUE	DATE
1ST_REVISION	02.26.24
2ND_REVISION	
3RD_REVISION	

CLIENT:
AVIATION MAINTENANCE
PROFESSIONALS
4500 TAILWIND DR. FT.
PIERCE, FL

REAL

S-1

GENERAL FOUNDATION NOTES

- CONCRETE SHALL BE A MINIMUM OF 4", 6" & 10" THICK AS INDICATED OVER CLEAN, TERMITE TREATED, COMPACTED FILL AND 10 MIL POLYETHYLENE VAPOR BARRIER.
- CONCRETE 4" & 6" SLABS SHALL CONTAIN 6x6-W1.4xW1.4 WWF, (MINIMUM 1.5" COVERAGE); 10" CONCRETE SLAB SHALL CONTAIN #5 BARS @ 16"o.c. EACH WAY, (4" FROM BOTTOM);
- CONCRETE SHALL HAVE A MINIMUM COMPRESSIVE STRENGTH OF 3000 PSI.
- ALL 90° HOOKS ARE TO BE EXTENDED 10" MINIMUM BEYOND THE TURN. FIELD BENDS ARE TO BE DONE COLD AND THE DIAMETER OF THE BEND, MEASURED ON THE INSIDE OF THE BEND, IS NOT TO BE LESS THAN (6) BAR DIAMETERS.
- MINIMUM COVERAGE FOR REBAR SHALL BE 3" IN FOOTINGS AND 1-1/2" IN BOND BEAMS. HOOKS MAY BE ROTATED HORIZONTALLY IF REQUIRED TO ACHIEVE MINIMUM COVERAGES.
- REBAR OVERLAP SHALL BE 48 BAR DIAMETERS. (30" FOR #5 BARS)
- THE FOUNDATION DESIGN ASSUMES THAT THE SOIL HAS A MINIMUM LOAD CARRYING CAPACITY OF 2500 POUNDS PER SQUARE FOOT.
- GENERAL CONTRACTOR TO PROVIDE SOILS TESTS FOR REVIEW BY DESIGNER OF RECORD.
- FOUNDATION WORK TO START ONLY AFTER REVIEW AND APPROVAL OF SOILS TESTING REPORT..
- SATISFACTORY COMPACTION TEST OF FILL DOES NOT VERIFY LOWER SOILS ARE ADEQUATE.
- ALL SPECIFICATIONS AND DIMENSIONS TO BE VERIFIED BY CONTRACTOR.
- ALL EXTERIOR SLABS SHALL SLOPE MIN. 1/8" PER 12" FOR DRAINAGE.
- ENSURE ACCESSIBILITY TO ALL EXTERIOR DOORS. MAX. STEP @ DOOR OF 1/2".
- RUN STRIP FTG STEEL THRU PAD STEEL REINFORCING;
- ENSURE ALL LAP BARS LAP W/ BAR ENDS. IF REQUIRED REDUCE SPACING TO ENSURE END LAP, TYPICAL

REVIEWED FOR CODE
COMPLIANCE ST. LUCIE
COUNTY BOCC

Permit: BLDC-2312-001960

Type: Building

By: jpiinc

Date: 08/08/2024

HANGAR AREA: 39,975 SF
10" THICK SLAB;
S-1 OCCUPANCY

STORAGE & REPAIR AREAS: 12,660 SF
6" THICK SLAB;
S-1 OCCUPANCY

ADMINISTRATIVE AREA: 9,720 SF
4" THICK SLAB;
B OCCUPANCY

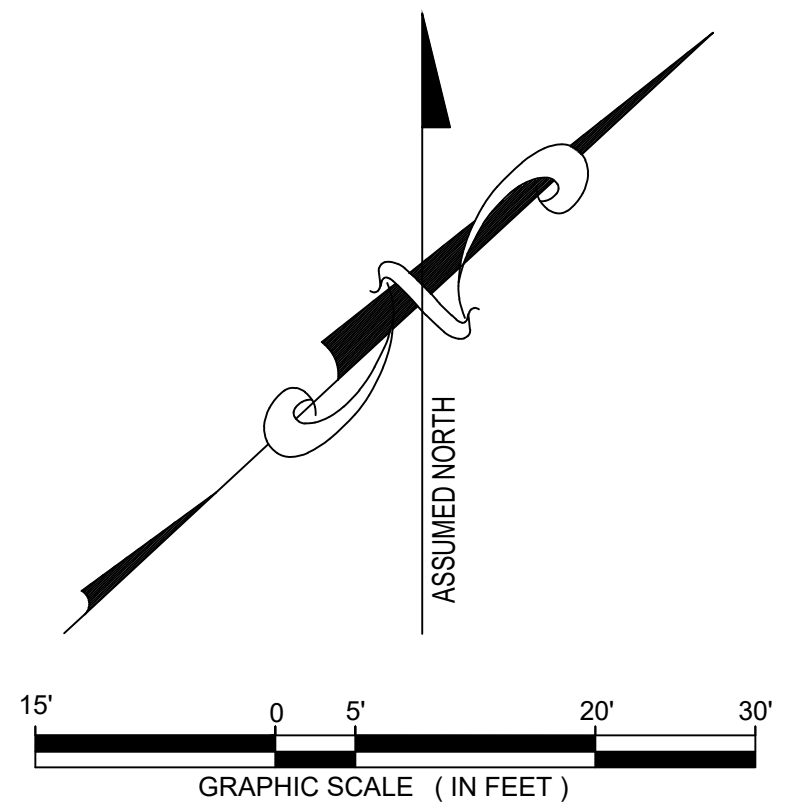
1" DEEP IN 4" & 6" SLABS & 2"
DEEP IN HANGAR SLAB BY 1/8"
WIDE CUT IN CONCRETE SLAB (TYP)

NOTES:

- SAWCUT WITHIN 12 HOUR PERIOD AFTER CONCRETE IS POURED UNLESS OTHERWISE AGREED TO BY ENGINEER OF RECORD.
- ALSO REFER TO STANDARD NOTES.

TYP. SAWCUT DETAIL

SCALE: NTS



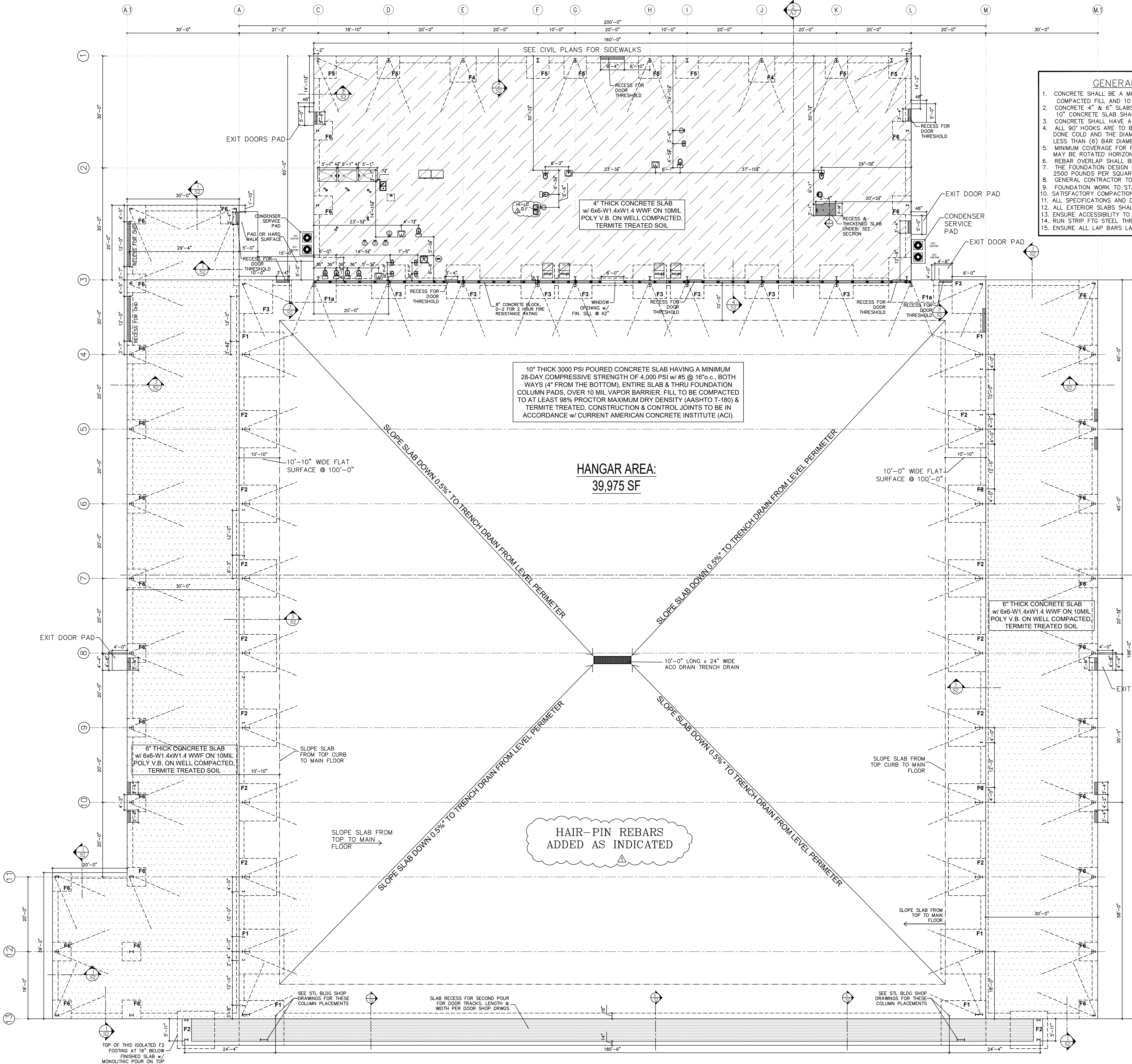
ANCHOR BOLT NOTES:

- ALL ANCHOR BOLTS TO BE ASTM A36 & A449;
- STEEL BLDG MANUFACTURER TO SPECIFY BOLT DIAMETERS & QUANTITIES OF BOLTS PER COLUMN.
- ELEVATIONS OF SLAB BEARING TO BE SET AT 0'-8".
- NO GROUT TO BE USED UNDER BEARING COLUMN PLATES.
- STEEL BLDG MANUFACTURER TO SPECIFY BEARING PLATE SIZES & THICKNESS.
- STEEL BLDG MANUFACTURER'S BOLT SETTING PLAN TO BE USED FOR SETTING BOLTS;
- BOLT LENGTHS TO BE 24" w/ MIN. 20" EMBEDMENT; SEE PAGE S-2 FOR BOLT DETAIL.

FOUNDATION PLAN

SCALE: 1/12" = 1'-0"

G.C. TO COORDINATE STEEL
COLUMN LOCATIONS w/ HANGAR
DOOR SHOP DRWGS & STACKING
CLEARANCE REQUIREMENTS





(772)631-5709 AA26002573

THESE DRAWINGS CONTAIN ARCHITECTURAL SYMBOLS USED FOR GRAPHIC PURPOSES ONLY. SIZE AND LOCATION MAY VARY TO MEET MANUFACTURER'S SPECIFICATIONS.

DO NOT SCALE DRAWINGS ANY QUESTIONS ABOUT DIMENSIONS, CONTACT DESIGNER.

AVIATION MANAGEMENT AND REPAIRS FORT PIERCE AIRPORT

START DATE:	09.09.21
NO REVISION/ISSUE	DATE
1ST_REVISION	02.26.24
2ND_REVISION	
3RD_REVISION	

CLIENT:
AVIATION MAINTENANCE
PROFESSIONALS
4500 TAILWIND DR. FT.
PIERCE, FL

REAL

REVIEWED FOR CODE
COMPLIANCE ST. LUCIE
COUNTY BOCC

Permit: BLDC-2312-001960

Type: Building

By: jpiinc

Date: 08/08/2024

S-2

FOOTING SCHEDULE:

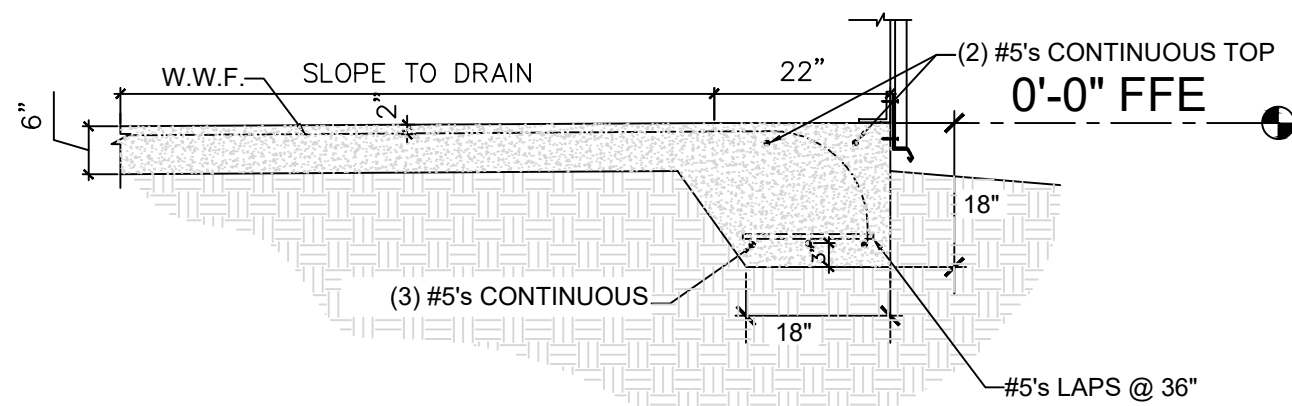
FTG ID	SIZE (LENGTH X WIDTH X THICK)	REINFORCEMENT	REMARKS
F-1	12'-0"SQx30"DEEP	#5 @ 10" EW TOP&BOT	#5 HAIRPINS WHERE INDICATED
F-1a	12'-0"SQx30"DEEP w/ 6'-0" SQ KNOTCH	#5 @ 10" EW TOP&BOT	#5 HAIRPINS WHERE INDICATED
F-2	10'-0"SQx30"DEEP	#5 @ 10" EW TOP&BOT	#5 HAIRPINS WHERE INDICATED
F-3	9'-0"SQx30"DEEP	#5 @ 10" EW TOP&BOT	#5 HAIRPINS WHERE INDICATED
F-4	7'-0" SQx30"DEEP	#5 @ 10" EW TOP&BOT	#5 HAIRPINS WHERE INDICATED
F-5	6'-0" SQx30"DEEP	#6 @ 10" EW TOP&BOT	#5 HAIRPINS WHERE INDICATED
F-6	5'-0"SQx28"DEEP	#5 @ 10" EW TOP&BOT	#5 HAIRPINS WHERE INDICATED

NOTE:

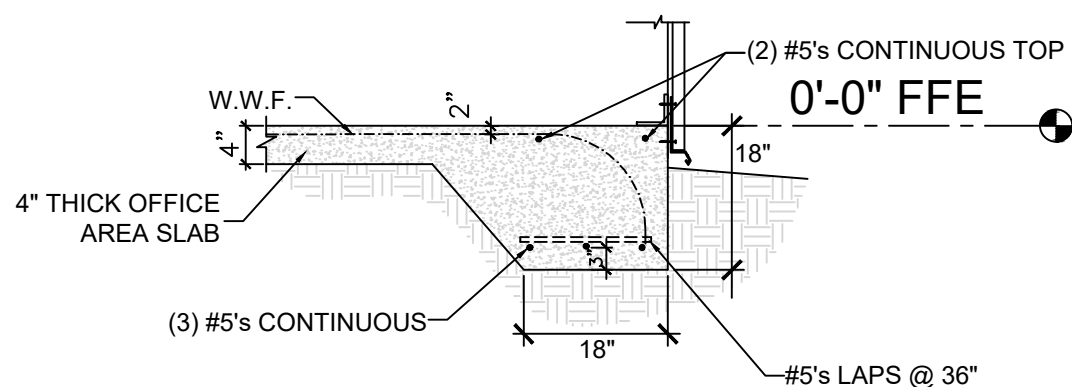
1. EXTEND ALL REBAR OF CONTIN. FOOTINGS THRU PADS;
2. FOOTING SIZES & EXACT PLACEMENT TO BE CONFIRMED BY SHOP DRWG REACTIONS

GENERAL MASONRY & CONCRETE NOTES

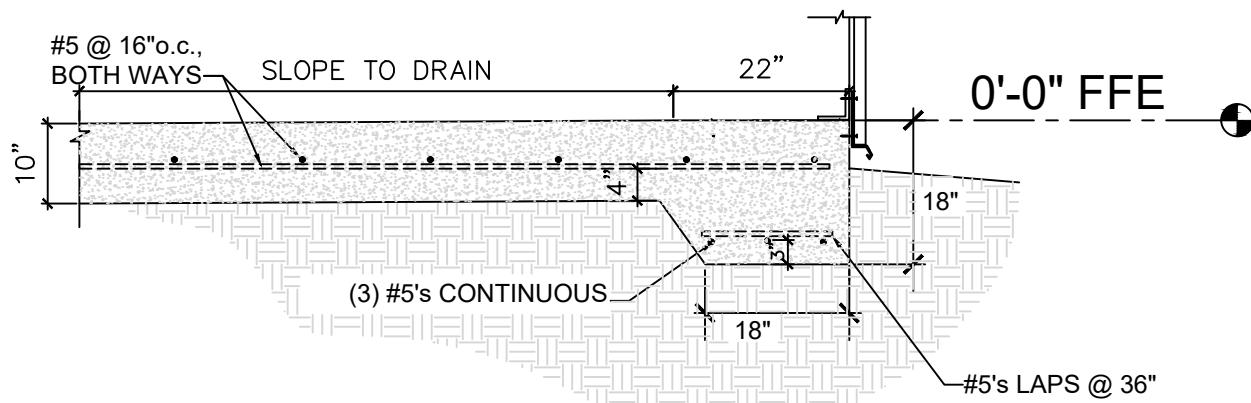
1. MASONRY CONSTRUCTION SHALL CONFORM TO 2020 FBC AND ACI 530/530.1-13.
2. CONCRETE BLOCKS SHALL CONFORM TO ASTM-C90 WITH F'M=1500PSI.
3. MORTAR SHALL CONFORM TO ASTM C-270 TYPE "M" OR "S".
4. REINFORCE WALLS SHALL CONFORM TO ACI 530-95 AND AS SHOWN ON PLANS AND SECTIONS USING VERTICAL #5 IN GROUTED CELLS WITH PROPER DOWELS AND CORNER BARS CONFORMING TO ASTM A-615
5. WHERE SHOWN ON FOUNDATION PLAN, CONCRETE BLOCK TO BE FILLED SOLID WITH GROUT F'C=3000 PSI MINIMUM AND (1) #5 VERTICAL BAR, MAX.32"O.C. & AS PER NOTE #4 ABOVE. CONCRETE SHALL HAVE A MINIMUM COMPRESSIVE STRENGTH OF NOT LESS THAN 3000 PSI.
6. ALL 90° HOOKS ARE TO BE EXTENDED 18" MINIMUM BEYOND THE TURN. FIELD BENDS ARE TO BE DONE COLD AND THE DIAMETER OF THE BEND, MEASURED ON THE INSIDE OF THE BAR, IS NOT TO BE LESS THAN (6) BAR DIAMETERS)
7. MINIMUM COVERAGE FOR REBAR SHALL BE 1-1/2" IN CONCRETE BEAMS. HOOKS MAY BE ROTATED HORIZONTALLY IF REQUIRED TO ACHIEVE MINIMUM COVERAGES.
8. REBAR OVERLAP SHALL BE 48 BAR DIAMETERS. (30" MIN. FOR #5 BARS)
9. ALL SPECIFICATIONS AND DIMENSIONS TO BE VERIFIED BY CONTRACTOR.



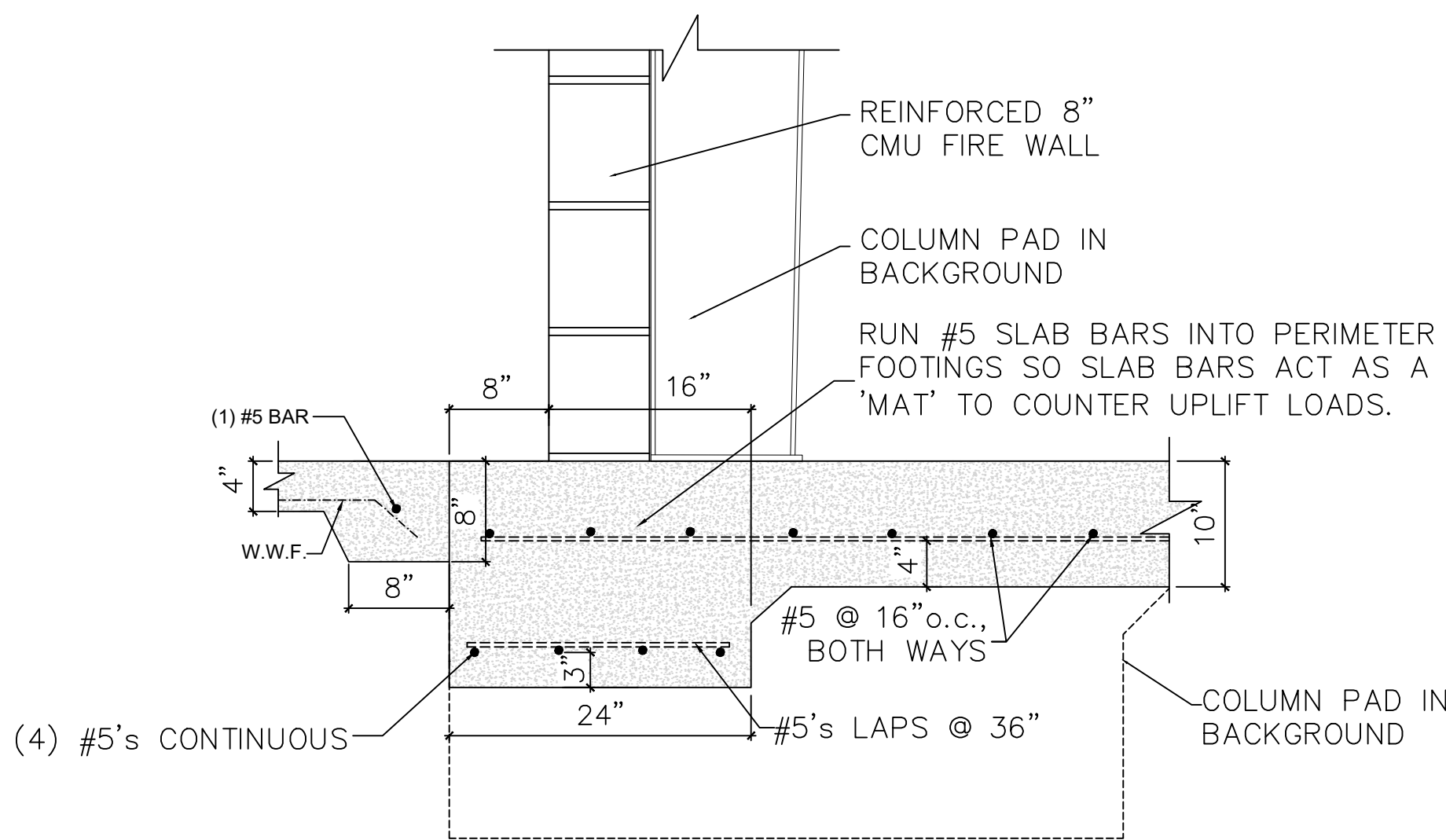
1 SHOP PERIMETER FOOTING
SCALE: 1/2" = 1'-0"



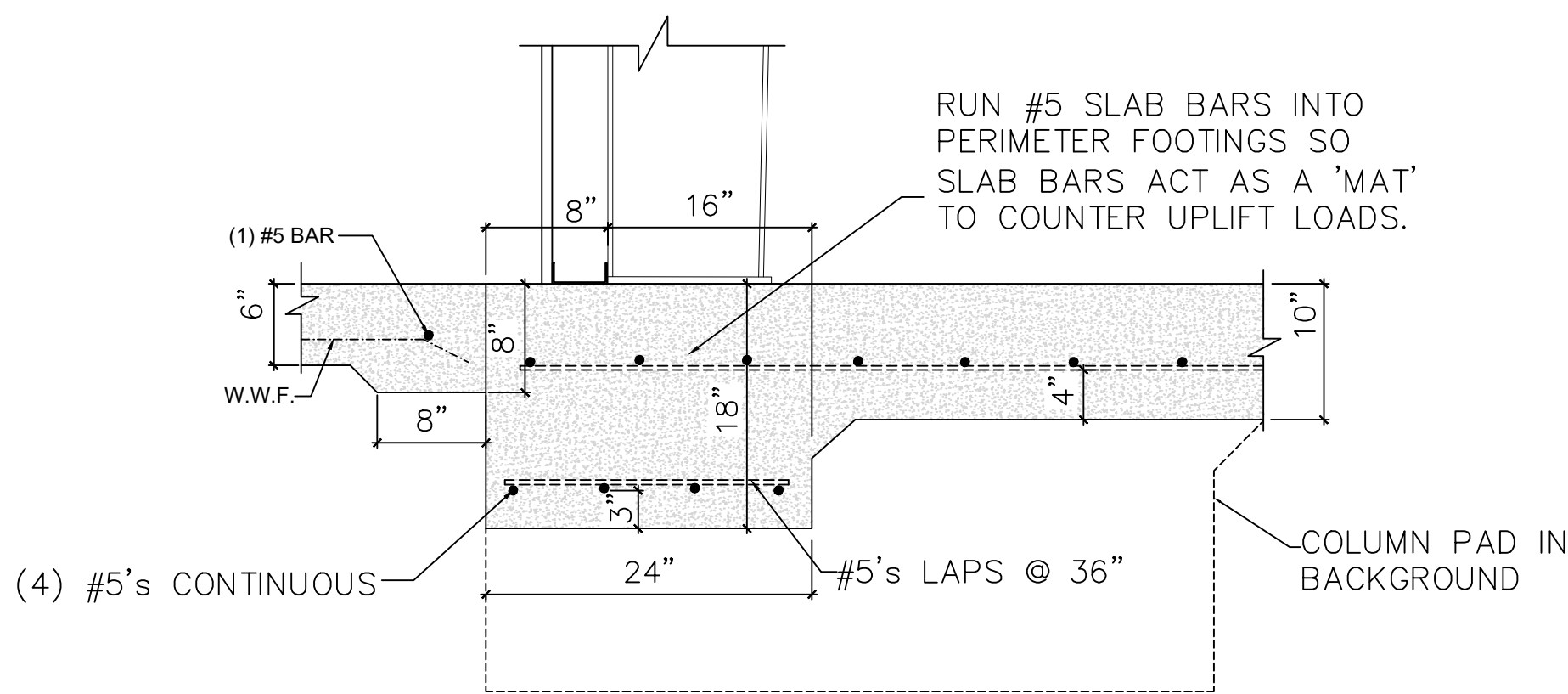
2 OFFICE PERIMETER FOOTING
SCALE: 1/2" = 1'-0"



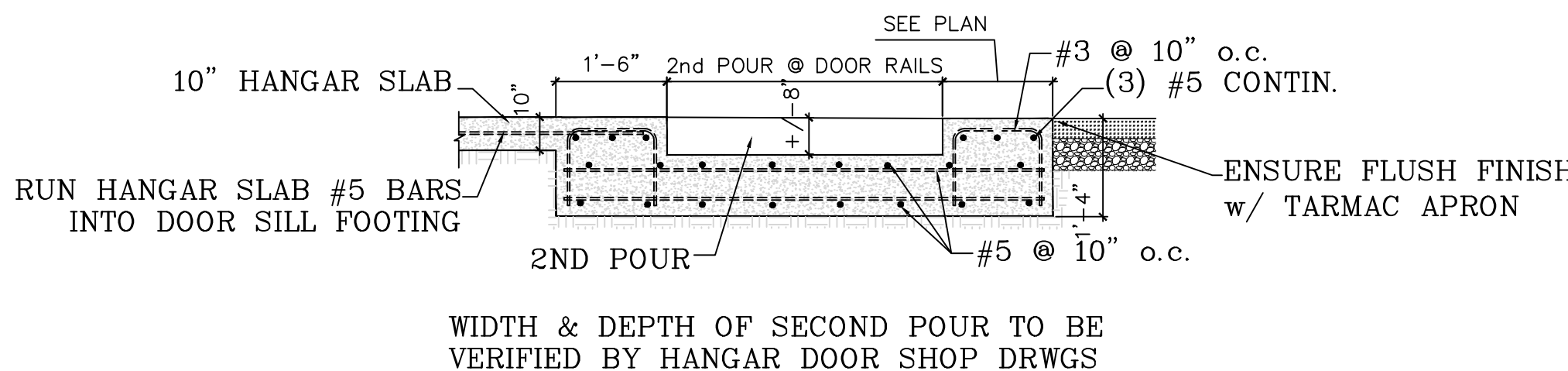
3 HANGAR PERIMETER FOOTING
SCALE: 1/2" = 1'-0"



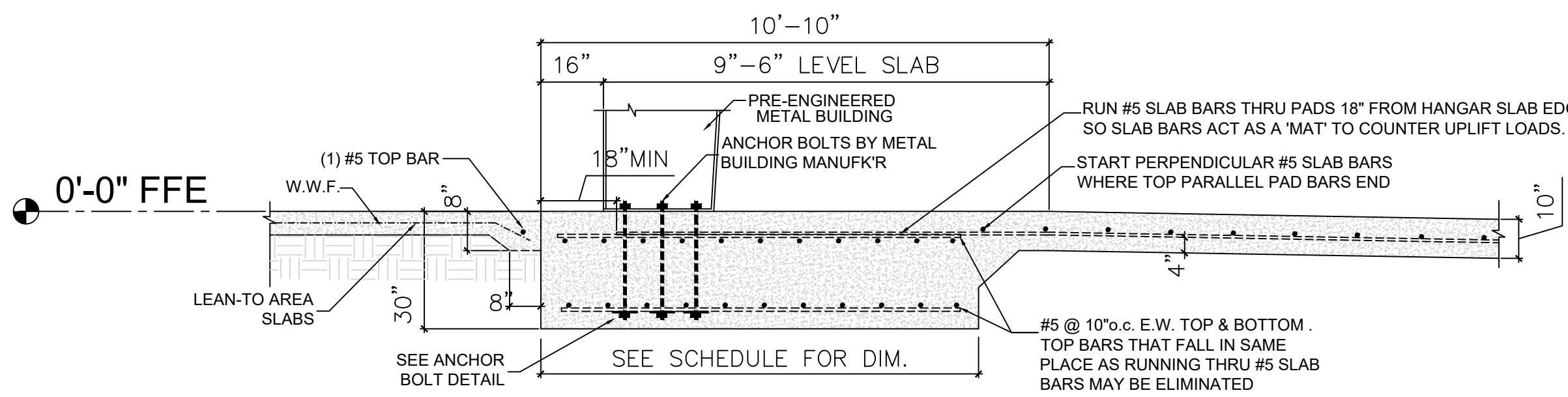
4 HANGAR TO ADMIN. FOOTING
SCALE: 1" = 1'-0"



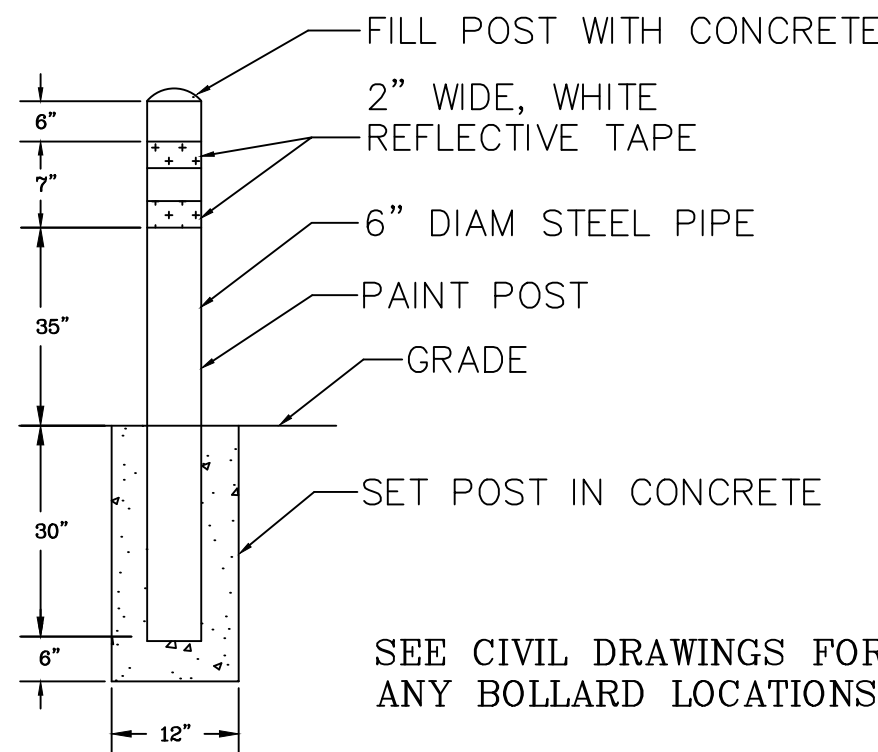
5 HANGAR TO SHOPS FOOTING
SCALE: 1" = 1'-0"



6 HANGAR DOOR SILL AT STACKING
SCALE: 1/2"=1'-0"

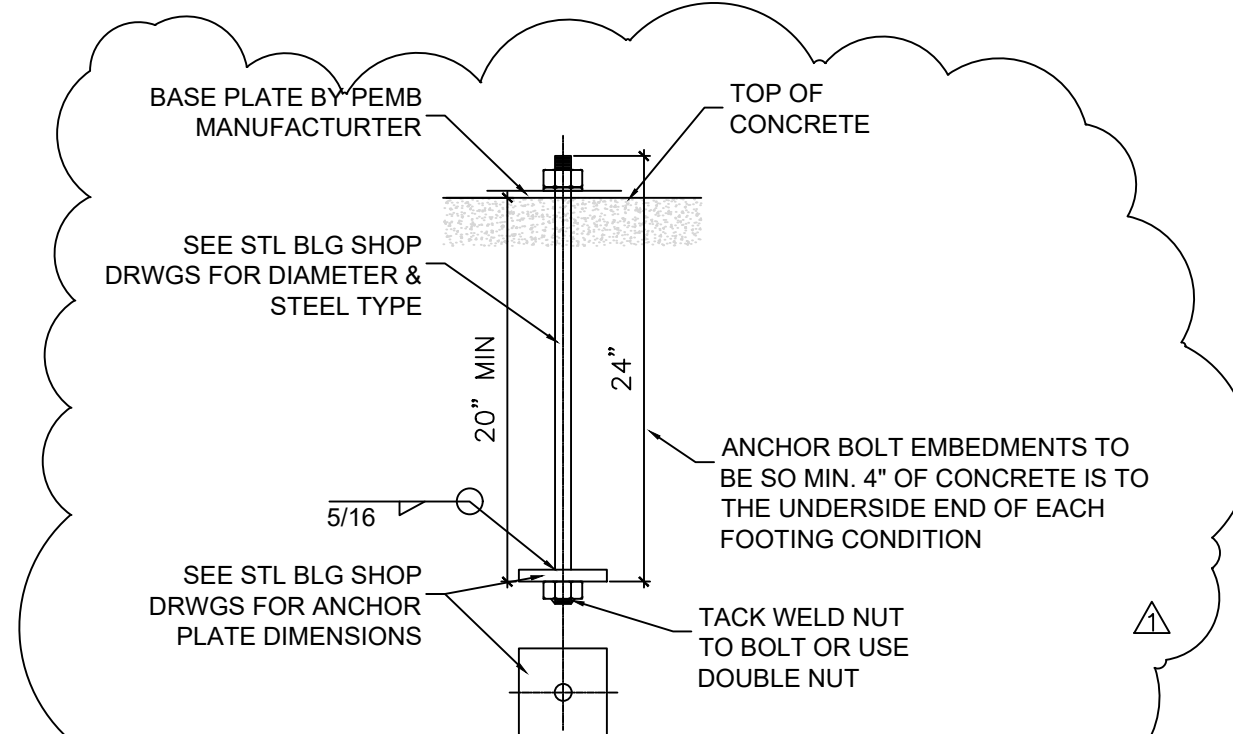


7 TYPICAL PAD FOOTING
SCALE: 3/8" = 1'-0"



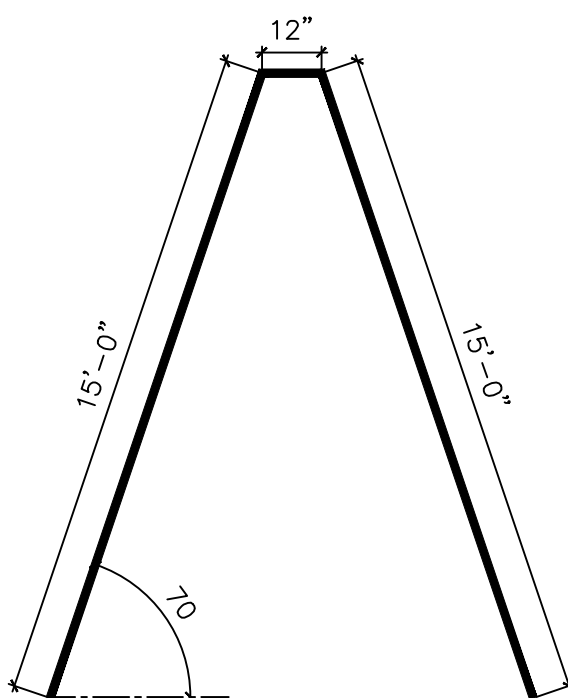
BOLLARD DETAIL

N.T.S.



ANCHOR BOLT DETAIL

SCALE: 1" = 1'-0"



TYPICAL HAIRPIN BARS

SCALE: N.T.S.

SEE FOUNDATION PLAN FOR LOCATIONS