

CONTRACTOR

NOTES

IT IS THE CONTRACTOR'S RESPONSIBILITY TO REVIEW ALL DRAWINGS AND SPECIFICATIONS, INCLUDING BUT NOT LIMITED TO ARCHITECTURAL, CIVIL, STRUCTURAL, MECHANICAL, PLUMBING, AND ELECTRICAL PRIOR TO SUBMITTING A BID. REPORT ANY DISCREPANCIES TO ARCHITECT OR ENGINEER PRIOR TO BID.

ALUMINUM CONDUCTOR NOTES

- 1. ALUMINUM CONDUCTORS SHALL BE AA-8000 SERIES ALUMINUM ALLOY, COMPACT STRANDED, TYPE XHHN INSULATION.
2. ALUMINUM CONDUCTORS SHALL BE USED ONLY WHERE SPECIFIED ON THESE DRAWINGS. WHERE CONDUCTORS ARE NOT SPECIFIED THEY SHALL BE COPPER.
3. ALL ALUMINUM WIRING INSTALLATION SHALL MEET, AS A MINIMUM, THE NATIONAL ELECTRICAL INSTALLATION STANDARD (NEIS) AND NATIONAL ELECTRICAL CONTRACTORS ASSOCIATION (NECA) AIA/04-2000 'RECOMMENDED PRACTICE FOR INSTALLATION OF ALUMINUM BUILDING WIRE AND CABLE'.

PROJECT NOTES

- 1. ALL WORK SHALL CONFORM TO:
A. FLORIDA BUILDING CODE (FBC) 2023 - 8th EDITION.
B. FLORIDA FIRE PREVENTION CODE (FFPC) 2023 - 8th EDITION.
C. FLORIDA BUILDING CODE ENERGY CONSERVATION (FBC-EC) 2023 - 8th EDITION.
D. NATIONAL ELECTRIC CODE (NEC) - 2023
2. ALL MATERIALS SHALL BE NEW AND OF DOMESTIC ORIGIN AND SHALL BEAR UNDERWRITERS' LABEL WHERE APPLICABLE.

MC CABLE NOTES

- MC CABLE, METAL-CLAD CABLE GENERAL NOTES
BRANCH CIRCUITS MAY BE METAL CLAD CABLE TYPE (MC), PROVIDED:
WHERE PANEL IS FLUSH MOUNTED, THE CABLE SHALL RUN IN WALL CAVITY.
WHERE PANEL IS SURFACE MOUNTED, CONTRACTOR SHALL PROVIDE METAL STUDS WITH DRYWALL TO CREATE A CAVITY TO RUN THE MC CABLE WITHIN.

SOUND SYSTEM RESPONSIBILITIES

- 1. SOUND SYSTEM IS PROVIDED BY OWNER UNDER SEPARATE CONTRACT.
2. CONTRACTOR SHALL COORDINATE AND PROVIDE ALL BACK BOXES, CONDUITS, PULL WIRE, AND ETC. AS REQUIRED BY SYSTEM SUPPLIER/INSTALLER. COORDINATE ALL WORK WITH OWNER'S SOUND SYSTEM REPRESENTATIVE.

SECURITY SYSTEM NOTES

- 1. SYSTEM TO BE PROVIDED AND INSTALLED BY OWNER'S VENDOR.
2. ELECTRICAL CONTRACTOR SHALL PROVIDE JUNCTION BOXES AND CONDUIT WITH PULLWIRES FOR ALL MOUNTED DEVICES, DOOR CONTACTS, CAMERAS, ETC. CONTROL WIRING BY SYSTEM VENDOR. COORDINATE WITH OWNER'S SYSTEM VENDOR.
3. COORDINATE WITH SECURITY SYSTEM VENDOR FOR ADDITIONAL REQUIREMENTS AND PROVIDE LINE VOLTAGE NECESSARY FOR A COMPLETE AND OPERATIONAL SYSTEM.

NOTES

- UNLESS OTHERWISE NOTED ON FLOOR PLANS, OR UNLESS LOCATED ABOVE HARD CEILING, ALL EMPTY CONDUITS FOR ALARM SYSTEM SHALL TERMINATE ABOVE ACCESSIBLE CEILING AND SHALL:
1. TERMINATE AT AN ACCESSIBLE LOCATION.
2. PROVIDE A 90 DEGREE BEND INTO THE CEILING SPACE.
3. PROVIDE A CONNECTOR AND A PLASTIC BUSHING AT THE END OF THE CONDUIT.
4. PROVIDE A PULL WIRE IN THE CONDUIT FOR USE BY OTHERS.
5. CONDUITS SHALL BE TERMINATED WITHIN THE BAR JOISTS.

LOW VOLTAGE WIRING

WHERE LOW VOLTAGE WIRING IS PERMITTED BY THESE DRAWINGS AND APPROVED BY THE LOCAL AUTHORITY HAVING JURISDICTION TO BE FREE-WIRED, THESE WIRES SHALL BE PLENUM RATED AND U.L. LISTED FOR THE APPLICATION.

LEGEND

LEGEND table containing symbols and descriptions for electrical components like linear light fixture, downlight, wall bracket, exit light, battery powered emergency light, track lighting, etc.

NOTES

- 1. PROVIDE A 5KVA GENERAL PURPOSE TRANSFORMER, 480V, 1-PHASE PRIMARY, 120/240V 1-PHASE SECONDARY, IN A NEMA 3R ENCLOSURE MINIMUM. MOUNT THE TRANSFORMER AND ITS ASSOCIATED PRIMARY AND SECONDARY PROTECTION DISCONNECTS ON A 4"x4"x6" CONCRETE PEDESTAL BURIED 4'-0". MOUNT THE DISCONNECTS AND THE TRANSFORMER BACK TO BACK. ON THE PRIMARY SIDE, PROVIDE A 30 AMP, 600 VOLT, 1-PHASE NEMA 3R FUSED DISCONNECT WITH 20 AMP CLASS 'R' FUSES AND CLASS 'R' REJECTION CLIPS. ON THE SECONDARY SIDE, PROVIDE A 30 AMP 240V, 1-PHASE FUSED DISCONNECT WITH 20 AMP CLASS 'R' FUSES WITH CLASS 'R' REJECTION CLIPS. POWER THE SIGN AND THE MAINTENANCE RECEPTACLE FROM THIS DISCONNECT. COORDINATE WITH THE SIGN CONTRACTOR AND MAKE ALL FINAL TERMINATIONS AS REQUIRED.
2. MAINTENANCE RECEPTACLE TO BE MOUNTED AT THE SIGN OR AT THE PEDESTAL, AS DIRECTED BY THE SIGN VENDOR. SEE SIGN NOTE THIS SHEET FOR MORE INFORMATION.
3. 3-#6, 1-#6 E.G. IN 1-1/4" CONDUIT.
4. THE SIGN CIRCUIT VIA THE DISCONNECT SHALL RUN VIA A PHOTOCELL, FOR PHOTOCELL ON/OFF CONTROL.

SITE SIGN NOTE

RUN CONDUCTORS FROM (1) 30 AMP, 2 POLE CIRCUIT BREAKER IN PANEL, INDICATED TO DISCONNECT LIGHTING IN KEY NOTES, THIS SHEET, ONE FOR SIGN LIGHTING AND ONE FOR A MAINTENANCE OUTLET AT THE SIGN OR PEDESTAL. THE ELECTRICAL CONTRACTOR SHALL VERIFY WITH THE SIGN SUPPLIER FOR MAINTENANCE DISCONNECT EXACT TERMINATION REQUIREMENTS AND POINT OF CONNECTION AT THE SIGN. CONTACT THE ARCHITECT/ENGINEER FOR DIRECTIVES IF THERE IS ANY VARIATION IN REQUIREMENTS FROM THE INFORMATION DESCRIBED IN THIS NOTE.

SHEET INDEX

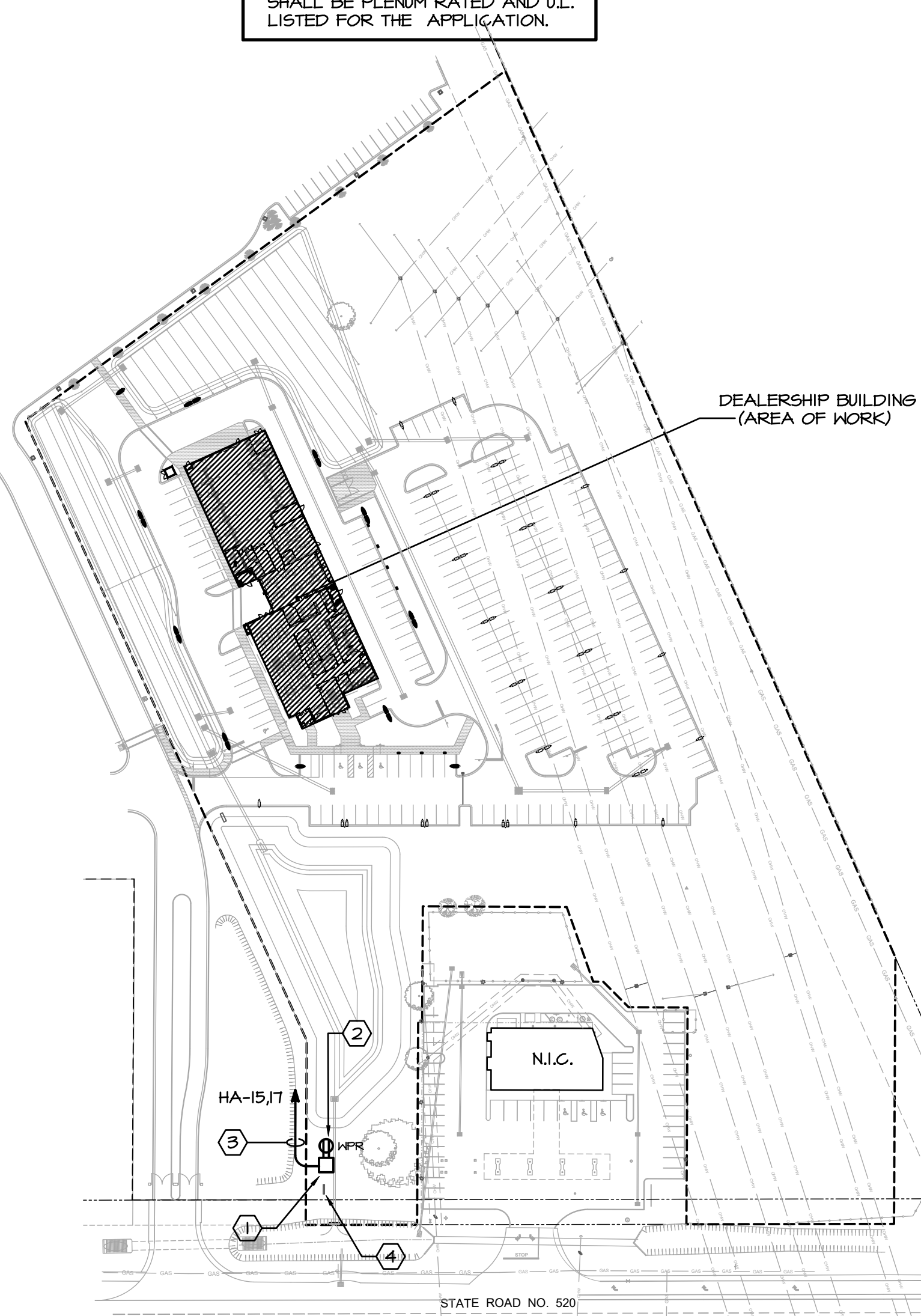
Table with columns SHEET and TITLE, listing sheets E001 through E500 and their titles like ELECTRICAL LEGEND AND NOTES, ELECTRICAL SITE PLAN, etc.

2023 FLORIDA BUILDING CODE, ENERGY CONSERVATION (8TH EDITION)

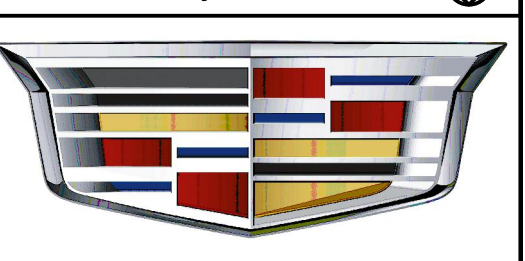
- SECTION C405.5 ELECTRIC POWER
C405.5.3 VOLTAGE DROP: THE CONDUCTORS FOR FEEDERS AND BRANCH CIRCUITS COMBINED ARE DESIGNED AND SIZED FOR A MAXIMUM OF 5% VOLTAGE DROP TOTAL.
C405.5.4.1 DRAWINGS: CONSTRUCTION DOCUMENTS SHALL REQUIRE THAT WITHIN 30 DAYS AFTER THE DATE OF SYSTEM ACCEPTANCE, RECORD DRAWINGS OF THE ACTUAL INSTALLATION SHALL BE PROVIDED TO THE BUILDING OWNER, INCLUDING:
1. A SINGLE-LINE DIAGRAM OF THE BUILDING ELECTRICAL DISTRIBUTION SYSTEM AND
2. FLOOR PLANS INDICATING LOCATION AND AREA SERVED FOR ALL DISTRIBUTION.
C405.5.4.2 MANUALS: CONSTRUCTION DOCUMENTS SHALL REQUIRE THAT AN OPERATING MANUAL AND MAINTENANCE MANUAL BE PROVIDED TO THE BUILDING OWNER. THE MANUALS SHALL INCLUDE, AT A MINIMUM, THE FOLLOWING:
1. SUBMITTAL DATA STATING EQUIPMENT RATINGS AND SELECTED OPTIONS FOR EACH PIECE OF EQUIPMENT REQUIRING MAINTENANCE.
2. OPERATION MANUALS AND MAINTENANCE MANUALS FOR EACH PIECE OF EQUIPMENT REQUIRING MAINTENANCE. REQUIRED ROUTINE MAINTENANCE ACTIONS SHALL BE CLEARLY IDENTIFIED.
3. NAMES AND ADDRESSES OF AT LEAST ONE QUALIFIED SERVICE AGENCY.
SECTION C408 SYSTEM COMMISSIONING
C408.3.1 FUNCTIONAL TESTING:
1. PRIOR TO PASSING FINAL INSPECTION, THE REGISTERED DESIGN PROFESSIONAL SHALL PROVIDE EVIDENCE THAT THE LIGHTING CONTROL SYSTEMS HAVE BEEN TESTED TO ENSURE THAT CONTROL HARDWARE AND SOFTWARE ARE CALIBRATED, ADJUSTED, PROGRAMMED AND IN PROPER WORKING CONDITION IN ACCORDANCE WITH THE CONSTRUCTION DOCUMENTS AND MANUFACTURER'S INSTRUCTIONS. FUNCTIONAL TESTING SHALL BE IN ACCORDANCE WITH SECTIONS C408.3.1.1 THROUGH C408.3.1.3 FOR THE APPLICABLE CONTROL TYPE.
C408.3.2 DOCUMENTATION REQUIREMENTS:
1. THE CONSTRUCTION DOCUMENTS SHALL SPECIFY THAT DOCUMENTS DESCRIBED IN THIS SECTION BE PROVIDED TO THE BUILDING OWNER'S AUTHORIZED AGENT WITHIN 90 DAYS FROM THE DATE OF RECEIPT OF THE CERTIFICATE OF OCCUPANCY.

CONCEALED CONDUIT(S) AND DEVICE(S) NOTE

NO CONDUITS AND OR DEVICES SHALL BE SURFACE MOUNTED IN ANY AREA IN THE BUILDING WITH THE EXCEPTION OF THE ELECTRIC ROOM, COMPRESSOR ROOM, AND SIMILAR ROOMS. THE INTENT OF THIS DOCUMENT, IN ALL UNFINISHED AREAS, UNLESS SPECIFICALLY NOTED OTHERWISE, IS TO HAVE ALL CONDUITS CONCEALED IN ALL AREAS INSIDE BLOCK WALLS AND/OR INSIDE TILT UP PANELS AND DEVICES FLUSH MOUNTED IN THE THOSE WALLS AND/OR PANELS, INCLUDING BUT NOT LIMITED TO POWER OUTLETS, DATA OUTLETS, CONTROLS ETC. COORDINATE DEVICE LOCATIONS WITH THE APPROPRIATE PARTIES AND TILT PANEL CONTRACTOR AND PROVIDE ACCORDINGLY, COORDINATE WITH OWNER'S REPRESENTATIVE AND GENERAL CONTRACTOR ON SITE FOR ANY SITUATION WHERE FLUSH MOUNTED DEVICES CAN NOT BE INSTALLED IN A PARTICULAR AREA, AND GET OWNER'S APPROVAL PRIOR TO COMMENCING WORK. ALL DEVICE LOCATIONS SHALL BE FIELD VERIFIED PRIOR TO ROUGH IN. THIS IS TYPICAL OF ALL ELECTRIC SHEETS IN THIS DOCUMENT.



HARTMANN architecture inc. 4427 W. Kennedy Blvd. Suite 250 Tampa, Florida 33609 813.251.2190 AR09622



MIKE ERDMAN CADILLAC 4750 Highway 520 Cocoa, FL 32926

ELECTRICAL LEGEND AND NOTES

Table for project information including Project Number (22026), Drawn By (RR), Checked By (SC), Issue Date (02.09.24), and Sheet Number.

E001

CHEHAYEB & ASSOCIATES, INC. CONSULTING PROFESSIONAL ENGINEERS 3702 AZEELI ST. TAMPA, FL 33609 (813) 878-1415 (fax) 878-0918 LIC. #49521 SOUHEL CHEHAYEB CERT. #7340 22-93

GENERAL NOTES

NOTES

- CONDUIT RUN BELOW GRADE SHALL BE PVC SCHEDULE 40, 90° ELBOWS, 2" AND LARGER SHALL BE GALVANIZED RIGID CONDUITS. RISERS SHALL BE RIGID STEEL CONDUITS WHERE EXPOSED TO OUTSIDE ELEMENTS, AND SUBJECT TO PHYSICAL DAMAGE. REFER TO SPECIFICATIONS.
- ALL UNDERGROUND SITE CONDUIT SHALL BE BURIED A MINIMUM OF 36 INCHES DEEP BELOW FINISHED GRADE TO TOP OF CONDUIT UNLESS OTHERWISE NOTED.
- PROVIDE COLOR TAPE FOR IDENTIFICATION AT 18 INCHES DEEP (ABOVE SERVICE CONDUIT RUNS) PER N.E.C. 300-5 (D) (3).
- ALL TURNS SHALL BE MADE WITH LONG SHEEP ELLS.
- CONTRACTOR SHALL PROVIDE ALL EXCAVATING AND BACK FILLING REQUIRED FOR ALL NEW WORK INCLUDING FILL, COMPACTION, SURFACE, ETC. TO MEET ALL REQUIREMENTS AS APPLICABLE FOR THE AREA.
- PRIOR TO THE START OF CONSTRUCTION, CONTRACTOR SHALL DETERMINE THE PRESENCE AND LOCATION OF ANY UNDERGROUND FACILITIES SUCH AS TELEPHONE, ELECTRIC POWER, WATER, GAS, SEWAGE LINES, ETC. WHETHER PREVIOUSLY EXISTING OR AS INSTALLED BY OTHER TRADES, TO AVOID INTERFERENCE WITH ANY SUCH SYSTEM.
- ALL SPARE, EMPTY CONDUITS SHALL BE LABELED AS TO THEIR FUNCTION.
- CONTRACTOR SHALL MAINTAIN AN AS-BUILT DIMENSIONAL DRAWING ON SITE SHOWING ALL UNDERGROUND SERVICE ROUTINGS AND TERMINATION POINTS.
- CONTRACTOR SHALL MEET ON SITE WITH REPRESENTATIVES OF THE UTILITY COMPANIES INCLUDING POWER, TELEPHONE, AND CABLE TO DETERMINE THE FOLLOWING: (PRIOR TO BID AND PRIOR TO ROUGH IN.)

- POWER COMPANY:**
- VERIFY EXACT TRANSFORMER(S) LOCATION PRIOR TO BID.
 - VERIFY PRIMARY CONDUIT WORK REQUIRED AND RESPONSIBILITY PRIOR TO BID.
 - VERIFY METERING METHOD AND REQUIREMENTS, IF DIFFERENT FROM WHAT IS SHOWN ON THE DRAWINGS, NOTIFY ENGINEER IMMEDIATELY.
- TELEPHONE COMPANY:**
- ORIGINATION AND TERMINATION OF THE SERVICE CONDUITS.
 - INSTALLATION SPECIFICATIONS, SIZE AND QUANTITY REQUIRED. HOWEVER, MAINTAIN QUANTITY AND SIZES SHOWN ON PLANS, IF IN EXCESS OF UTILITY REQUIREMENTS.

NOTE:
CONTRACTOR'S FAILURE TO COMPLY WITH THESE COORDINATION PROCEDURES WILL CONSTITUTE THE CONTRACTOR ASSUMING ALL COSTS ASSOCIATED WITH REPLACING ANY AND ALL WORK ALREADY IN PLACE TO MEET UTILITY COMPANIES' RULES AND REQUIREMENTS.

UTILITY COORDINATION

TO THE BEST OF OUR ABILITY THE SERVICE HAS BEEN COORDINATED WITH THE UTILITY COMPANY REPRESENTATIVE(S) FOR:

- TRANSFORMER(S) LOCATION.
- CUSTOMER RESPONSIBILITY.
- REQUESTED VOLTAGE & AVAILABILITY.
- PRIMARY CONDUITS RESPONSIBILITY AND REQUIREMENT.

IT IS THE CONTRACTOR RESPONSIBILITY TO REVISIT THESE ITEMS WITH UTILITY PROJECT ENGINEER TO VERIFY THAT THE CURRENT DESIGN SHOWN ON THE CONSTRUCTION DOCUMENT(S) ARE STILL IN COMPLIANCE WITH THE UTILITY PLANS TO SERVICE THIS SITE.

ANY COST ASSOCIATED WITH UTILITY FEES SHALL BE THE RESPONSIBILITY OF THE CONTRACTOR TO ADDRESS WITH THE DEVELOPER.

THIS COORDINATION SHALL BE A PART OF SITE MEETING TO BE SCHEDULED BY THE CONTRACTOR WITH THE UTILITY PERSONNEL PRIOR TO THE START OF THE PROJECT.

COORDINATION SHALL ALSO BE MADE WITH TELEPHONE AND CABLE SERVICE REPRESENTATIVE(S) FOR VERIFICATION OF THEIR REQUIREMENTS INCLUDING POINT OF CONNECTION AND TERMINATION POINTS.

UTILITY COORDINATION DUE-DILIGENCE PROGRESS

CONTACT HAS BEEN MADE WITH THE UTILITY COMPANY. HOWEVER, NO DESIGN OR POINT OF CONNECTION HAS BEEN VERIFIED WITH THE SAME. THEREFORE, THE CONTRACTOR SHALL CONTACT THE POWER COMPANY FOR MORE INFORMATION REGARDING THE DESIGN SHOWN IN THE PLANS, INCLUDING ANY PERTINENT INFORMATION REGARDING METERING, PRIMARY SERVICE CONDUIT RESPONSIBILITY, SOURCE OF POWER, VOLTAGE ETC.. PRIOR TO SUBMITTING A BID OR QUALIFY THAT IN THE BASE BID TO THE G.C..

THE SAME IS TRUE FOR THE TELEDATA SERVICES. HOWEVER, THE CONDUITS(S) SHOWN IN THIS DOCUMENT SHALL BE THE MINIMUM(S) AND QUANTITY ALLOWED. THE MAIN COORDINATION WITH THE UTILITY COMPANY, REGARDING TELEDATA, IS THE DESTINATION POINT AND ANY SPECIAL REQUIREMENTS NOT SHOWN IN THIS DOCUMENT.

BACKFLOW PREVENTOR

CONTRACTOR SHALL PROVIDE A 1-1/4" CONDUIT WITH WIRE AS REQUIRED FROM BACKFLOW PREVENTOR TO MAIN FIRE ALARM CONTROL PANEL. FIELD VERIFY LOCATION OF BACKFLOW PREVENTOR WITH CIVIL DRAWINGS AND SITE CONTRACTOR PRIOR TO BID. BACKFLOW PREVENTOR SHALL ALSO BE CHAINED AND LOCKED.

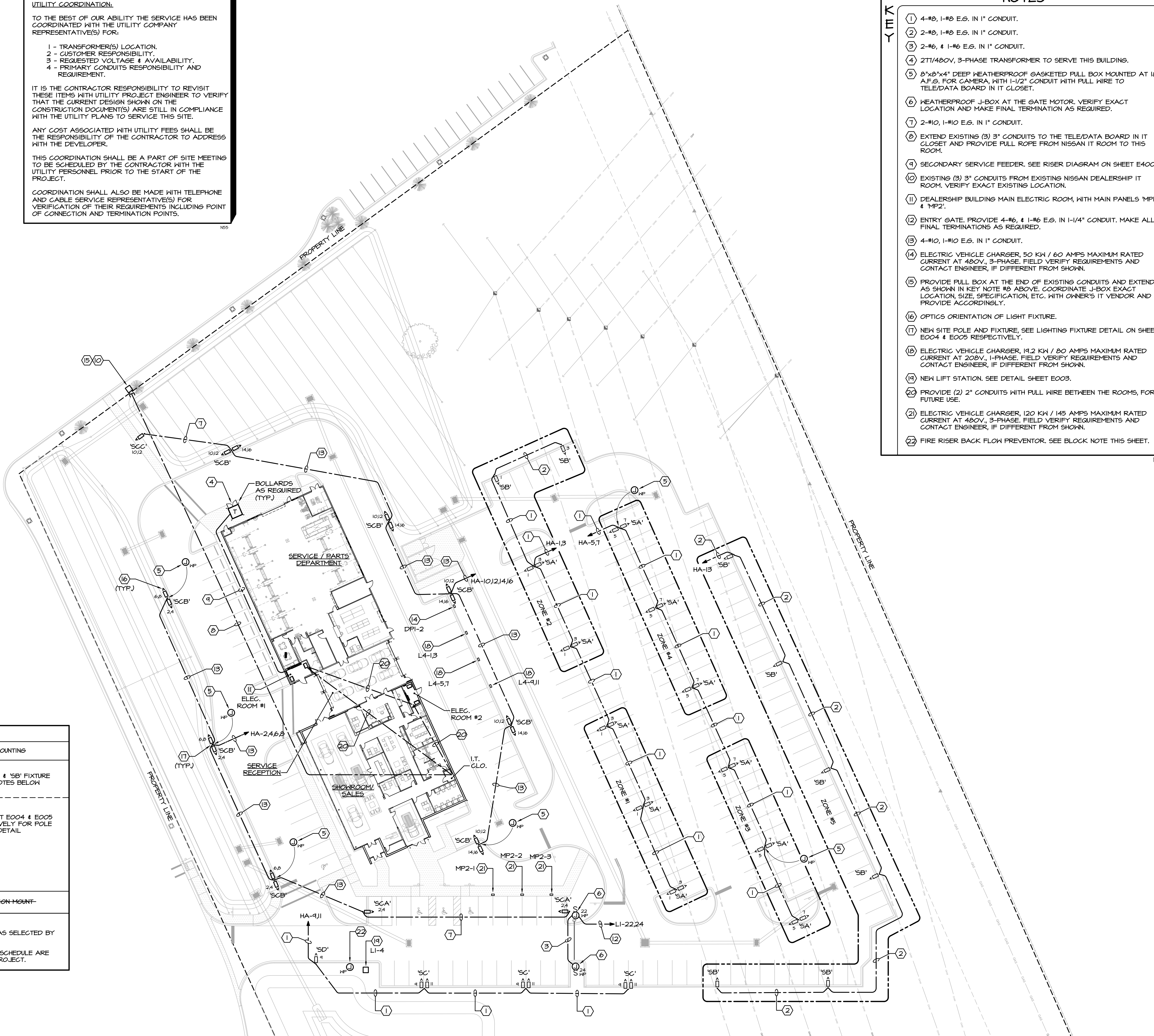
LIGHTING FIXTURE SCHEDULE

| TYPE | MANUF. | CATALOG NO. | VOLT | LAMPS | LOAD (W) | MOUNTING |
|------|----------------|--|----------|-------|----------|--|
| SA | LSI INDUSTRIES | (2) MRM-LED-30L-SIL-5H-40-TOCRI-CBA-DIM-ALBCSI | 277 | LED | 464 | TYPE 'SA' & 'SB' FIXTURE SEE NOTES BELOW |
| SB | LSI INDUSTRIES | MRM-LED-30L-SIL-3-40-TOCRI-CBA-DIM-ALBCSI | 277 | LED | 232 | SEE SHEET E004 & E005 RESPECTIVELY FOR POLE DETAIL |
| SC | LSI INDUSTRIES | (2) MRM-LED-36L-SIL-FT-40-TOCRI-CBA-DIM | 277 | LED | 576 | |
| SD | LSI INDUSTRIES | MRM-LED-30L-SIL-3-40-TOCRI-CBA-DIM | 277 | LED | 232 | |
| SCA | LSI INDUSTRIES | MRM-LED-48L-SIL-FT-40-TOCRI-CBA-DIM | 480 | LED | 401 | |
| SCB | LSI INDUSTRIES | (2) MRM-LED-48L-SIL-5H-40-TOCRI-CBA-DIM | 480 | LED | 802 | |
| SCC | LSI INDUSTRIES | MRM-LED-48L-SIL-5H-40-TOCRI-CBA-DIM | 480 | LED | 401 | |
| SF | SONARY | FL3-250N-N-040-CBA-SFF | 120V-277 | LED | 259 | STATION MOUNT |

- GENERAL NOTES:**
- PROVIDE NECESSARY MOUNTING HARDWARE AND ACCESSORIES FOR ALL FIXTURES.
 - ALL FIXTURE SHOWN ARE DESIGNED TO MATCH OTHER EXISTING SITE LIGHTING FIXTURES ON THIS SITE.
 - FIXTURE AND POLE FINISH COLOR AS SELECTED BY ARCHITECT.
 - NOT ALL FIXTURES SHOWN ON THIS SCHEDULE ARE REQUIRED IN THIS PHASE OF THE PROJECT.

'SA' & 'SB' - FIXTURE NOTES:

- FIXTURE SHALL BE OUT FITTED WITH AIRLINK BLUE WIRELESS MOTION AND PHOTOCELL SENSOR/CONTROLLER (8'-24" MOUNTING HEIGHT).
- SENSORS SHALL BE SET AT BOTTOM TRIM OF 50%.
- FIXTURES SHALL BE ZONED AS SHOWN ON PLANS AND SHALL NOT EXCEED 1500 WATT.
- LIGHTS SHALL BE SET AT 50% WHEN MOTION IS NOT DETECTED. UPON DETECTION OF MOTION THE FIXTURE GOES TO 100%. AFTER NO MOTION IS DETECTED FOR 15 MINUTES THE LIGHTS SHALL GO BACK TO 50% LEVEL.
- LIGHTS SHALL SHUT OFF WHEN LIGHT AT 4 FC IS DETECTED.



NOTES

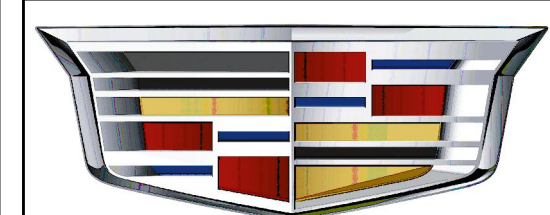
- 4-#8, 1-#8 E.S. IN 1" CONDUIT.
- 2-#8, 1-#8 E.S. IN 1" CONDUIT.
- 2-#6, 1-#6 E.S. IN 1" CONDUIT.
- 277/480V, 3-PHASE TRANSFORMER TO SERVE THIS BUILDING.
- 8"x8"x4" DEEP WEATHERPROOF GASKETED PULL BOX MOUNTED AT 18" A.F.S. FOR CAMERA, WITH 1/2" CONDUIT WITH PULL WIRE TO TELE/ATA BOARD IN IT CLOSET.
- WEATHERPROOF J-BOX AT THE GATE MOTOR. VERIFY EXACT LOCATION AND MAKE FINAL TERMINATION AS REQUIRED.
- 2-#10, 1-#10 E.S. IN 1" CONDUIT.
- EXTEND EXISTING (3) 3" CONDUITS TO THE TELE/ATA BOARD IN IT CLOSET AND PROVIDE FULL ROPE FROM NISSAN IT ROOM TO THIS ROOM.
- SECONDARY SERVICE FEEDER. SEE RISER DIAGRAM ON SHEET E400.
- EXISTING (3) 3" CONDUITS FROM EXISTING NISSAN DEALERSHIP IT ROOM. VERIFY EXACT EXISTING LOCATION.
- DEALERSHIP BUILDING MAIN ELECTRIC ROOM, WITH MAIN PANELS 'MP1' & 'MP2'.
- ENTRY GATE. PROVIDE 4-#6, 1-#6 E.S. IN 1-1/4" CONDUIT. MAKE ALL FINAL TERMINATIONS AS REQUIRED.
- 4-#10, 1-#10 E.S. IN 1" CONDUIT.
- ELECTRIC VEHICLE CHARGER, 50 KW / 60 AMPS MAXIMUM RATED CURRENT AT 480V, 3-PHASE. FIELD VERIFY REQUIREMENTS AND CONTACT ENGINEER, IF DIFFERENT FROM SHOWN.
- PROVIDE PULL BOX AT THE END OF EXISTING CONDUITS AND EXTEND AS SHOWN IN KEY NOTE #8 ABOVE. COORDINATE J-BOX EXACT LOCATION, SIZE, SPECIFICATION, ETC. WITH OWNER'S IT VENDOR AND PROVIDE ACCORDINGLY.
- OPTICS ORIENTATION OF LIGHT FIXTURE.
- NEW SITE POLE AND FIXTURE. SEE LIGHTING FIXTURE DETAIL ON SHEET E004 & E005 RESPECTIVELY.
- ELECTRIC VEHICLE CHARGER, 14.2 KW / 80 AMPS MAXIMUM RATED CURRENT AT 208V, 1-PHASE. FIELD VERIFY REQUIREMENTS AND CONTACT ENGINEER, IF DIFFERENT FROM SHOWN.
- NEW LIFT STATION. SEE DETAIL SHEET E003.
- PROVIDE (2) 2" CONDUITS WITH PULL WIRE BETWEEN THE ROOMS, FOR FUTURE USE.
- ELECTRIC VEHICLE CHARGER, 120 KW / 145 AMPS MAXIMUM RATED CURRENT AT 480V, 3-PHASE. FIELD VERIFY REQUIREMENTS AND CONTACT ENGINEER, IF DIFFERENT FROM SHOWN.
- FIRE RISER BACK FLOW PREVENTOR. SEE BLOCK NOTE THIS SHEET.

architecture design planning

HARTMANN architecture inc.

4427 W. Kennedy Blvd.
Suite 250
Tampa, Florida 33609
813.251.2190
AR09622

Project Name



MIKE ERDMAN CADILLAC
4750 Highway 520
Cocoa, FL 32926

Sheet Title

ELECTRICAL SITE PLAN

Revisions

State Registration
Souheil Chehayeb, P.E.
FL Lic. No. 49521

Project Number

22026

Drawn By

RR

Checked By

SC

Issue Date

02.09.24

Sheet Number

E002

UTILITY CONTACTS

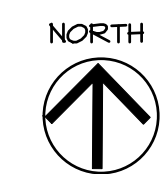
POWER COMPANY: FP#1 PROJECT #12741254
CHRISTIAN CRUZ
(321) 126-4804 (O) / (954) 242-5237 (C)
christian.cruz@fp.com

TELEPHONE COMPANY: ATT
THOMAS SHEPPARD
(321) 744-6567
ts245@att.com

CONTRACTOR SHALL NOTIFY EACH UTILITY COMPANY REPRESENTATIVE LISTED ABOVE OF THE PRE-CONSTRUCTION MEETING SCHEDULE.

SITE LIGHTING CONTROLS

SITE LIGHTING IS PROVIDED WITH 50/50 CONTROLS WHERE 50% OF THE LIGHTS REMAIN ON ALL NIGHT PHOTOCELL ON/OFF, AND THE OTHER 50% WILL BE CONTROLLED VIA PHOTOCELL ON AND TIME CLOCK OFF ONE HOUR AFTER CLOSING.



ELECTRICAL SITE PLAN
SCALE: 1" = 30'-0"

CHEHAYEB & ASSOCIATES, INC.
CONSULTING PROFESSIONAL ENGINEERS

3702 AZEEL ST. TAMPA, FL 33609 (813) 878-1415 (Fax) 878-0919
LIC. #49521 SOUHEIL CHEHAYEB CERT. #7340 22-93

| Luminaire Locations | | Location | | | | | | | | | | | Azim | | |
|---------------------|-------|----------|--------|-------|----|-------------|----|--------|------|--------|--------|------|------|--|--|
| No. | Label | X | Y | Z | MH | Orientation | TH | X | Y | Z | | | | | |
| 1 | SA | 456.37 | 858.31 | 14.00 | 14 | | | 246.35 | 0.00 | | | | | | |
| 2 | SA | 481.35 | 823.96 | 14.00 | 14 | | | 246.35 | 0.00 | | | | | | |
| 3 | SA | 398.03 | 831.92 | 14.00 | 14 | | | 246.35 | 0.00 | | | | | | |
| 4 | SA | 422.77 | 777.35 | 14.00 | 14 | | | 246.35 | 0.00 | | | | | | |
| 5 | SA | 505.81 | 749.32 | 14.00 | 14 | | | 246.35 | 0.00 | | | | | | |
| 6 | SA | 447.61 | 722.88 | 14.00 | 14 | | | 246.35 | 0.00 | | | | | | |
| 7 | SA | 530.78 | 696.76 | 14.00 | 14 | | | 246.35 | 0.00 | | | | | | |
| 8 | SA | 472.39 | 666.36 | 14.00 | 14 | | | 246.35 | 0.00 | | | | | | |
| 9 | SA | 555.48 | 640.01 | 14.00 | 14 | | | 246.35 | 0.00 | | | | | | |
| 10 | SA | 495.24 | 610.81 | 14.00 | 14 | | | 246.35 | 0.00 | | | | | | |
| 11 | SA | 578.78 | 589.20 | 14.00 | 14 | | | 246.35 | 0.00 | | | | | | |
| 12 | SB | 534.98 | 838.92 | 14.00 | 14 | | | 246.35 | 0.00 | 532.05 | 838.88 | 0.00 | | | |
| 13 | SB | 568.05 | 798.95 | 14.00 | 14 | | | 243.17 | 0.00 | 565.59 | 795.71 | 0.00 | | | |
| 14 | SB | 600.88 | 684.14 | 14.00 | 14 | | | 243.17 | 0.00 | 598.42 | 682.90 | 0.00 | | | |
| 15 | SB | 633.89 | 621.80 | 14.00 | 14 | | | 243.17 | 0.00 | 631.44 | 620.36 | 0.00 | | | |
| 16 | SB | 616.68 | 615.51 | 14.00 | 14 | | | 152.97 | 0.00 | 617.61 | 613.98 | 0.00 | | | |
| 17 | SB | 370.74 | 894.95 | 14.00 | 14 | | | 156.27 | 0.00 | 371.85 | 892.43 | 0.00 | | | |
| 18 | SB | 522.35 | 543.30 | 14.00 | 14 | | | 0.00 | 0.00 | 522.95 | 540.05 | 0.00 | | | |
| 19 | SB | 598.68 | 543.89 | 14.00 | 14 | | | 0.00 | 0.00 | 598.68 | 540.44 | 0.00 | | | |
| 20 | SC | 392.35 | 543.27 | 30.00 | 30 | | | 0.00 | 0.00 | 0.00 | 0.00 | 0.00 | | | |
| 21 | SC | 462.07 | 543.27 | 30.00 | 30 | | | 0.00 | 0.00 | 0.00 | 0.00 | 0.00 | | | |
| 22 | SC | 532.65 | 543.27 | 30.00 | 30 | | | 0.00 | 0.00 | 0.00 | 0.00 | 0.00 | | | |
| 23 | SD | 248.63 | 560.12 | 30.00 | 30 | | | 0.00 | 0.00 | 248.63 | 562.87 | 0.00 | | | |
| 24 | SCA | 280.83 | 608.88 | 30.00 | 30 | | | 0.00 | 0.00 | 283.88 | 608.82 | 0.00 | | | |
| 25 | SCA | 422.17 | 596.11 | 30.00 | 30 | | | 0.00 | 0.00 | 419.42 | 596.11 | 0.00 | | | |
| 26 | SCB | 380.06 | 641.84 | 30.00 | 30 | | | 65.18 | 0.00 | | | | | | |
| 27 | WAE | 253.09 | 745.86 | 14.00 | 14 | | | 248.41 | 0.00 | 253.24 | 745.85 | 0.00 | | | |
| 28 | SCB1 | 381.21 | 638.14 | 30.00 | 30 | | | 0.00 | 0.00 | 381.21 | 638.14 | 0.00 | | | |
| 29 | SCB2 | 336.90 | 644.13 | 30.00 | 30 | | | 335.18 | 0.00 | 336.90 | 644.13 | 0.00 | | | |
| 30 | SCB | 341.03 | 613.44 | 30.00 | 30 | | | 245.77 | 0.00 | | | | | | |
| 31 | SCB1 | 339.90 | 615.94 | 30.00 | 30 | | | 335.77 | 0.00 | 339.90 | 615.94 | 0.00 | | | |
| 32 | SCB2 | 342.16 | 610.93 | 30.00 | 30 | | | 155.77 | 0.00 | 342.16 | 610.93 | 0.00 | | | |
| 33 | SCB | 298.77 | 603.02 | 30.00 | 30 | | | 241.77 | 0.00 | | | | | | |
| 34 | SCB1 | 297.65 | 605.52 | 30.00 | 30 | | | 335.77 | 0.00 | 297.65 | 605.52 | 0.00 | | | |
| 35 | SCB2 | 299.90 | 600.51 | 30.00 | 30 | | | 155.77 | 0.00 | 299.90 | 600.51 | 0.00 | | | |
| 36 | SCB | 147.08 | 610.56 | 30.00 | 30 | | | 64.89 | 0.00 | | | | | | |
| 37 | SCB1 | 148.26 | 608.07 | 30.00 | 30 | | | 154.69 | 0.00 | 148.26 | 608.07 | 0.00 | | | |
| 38 | SCB2 | 145.90 | 613.04 | 30.00 | 30 | | | 334.69 | 0.00 | 145.90 | 613.04 | 0.00 | | | |
| 39 | SCB | 220.38 | 617.55 | 30.00 | 30 | | | 66.61 | 0.00 | | | | | | |
| 40 | SCB1 | 221.38 | 614.99 | 30.00 | 30 | | | 158.61 | 0.00 | 221.38 | 614.99 | 0.00 | | | |
| 41 | SCB2 | 219.37 | 620.11 | 30.00 | 30 | | | 338.61 | 0.00 | 219.37 | 620.11 | 0.00 | | | |
| 42 | SCB | 382.22 | 723.26 | 30.00 | 30 | | | 245.77 | 0.00 | | | | | | |
| 43 | SCB1 | 381.09 | 728.76 | 30.00 | 30 | | | 335.77 | 0.00 | 381.09 | 728.76 | 0.00 | | | |
| 44 | SCB2 | 383.34 | 720.74 | 30.00 | 30 | | | 155.77 | 0.00 | 383.34 | 720.74 | 0.00 | | | |
| 45 | SCB | 178.98 | 719.13 | 30.00 | 30 | | | 68.61 | 0.00 | | | | | | |
| 46 | SCB1 | 179.08 | 707.57 | 30.00 | 30 | | | 158.61 | 0.00 | 179.08 | 707.57 | 0.00 | | | |
| 47 | SCB2 | 177.08 | 712.69 | 30.00 | 30 | | | 338.61 | 0.00 | 177.08 | 712.69 | 0.00 | | | |
| 48 | SCB | 191.04 | 613.94 | 30.00 | 30 | | | 153.99 | 0.00 | | | | | | |
| 49 | SCB1 | 188.58 | 610.34 | 30.00 | 30 | | | 243.29 | 0.00 | 188.58 | 610.34 | 0.00 | | | |
| 50 | SCB2 | 193.50 | 612.81 | 30.00 | 30 | | | 63.29 | 0.00 | 193.50 | 612.81 | 0.00 | | | |
| 51 | WAE | 187.64 | 627.65 | 10.00 | 10 | | | 335.97 | 0.00 | 187.64 | 627.65 | 0.00 | | | |
| 52 | WAE | 248.51 | 685.21 | 10.00 | 10 | | | 332.65 | 0.00 | 248.51 | 685.21 | 0.00 | | | |
| 53 | WAE | 230.46 | 677.61 | 10.00 | 10 | | | 334.49 | 0.00 | 230.46 | 677.61 | 0.00 | | | |
| 54 | WAE | 280.79 | 788.54 | 10.00 | 10 | | | 66.99 | 0.00 | 280.79 | 788.54 | 0.00 | | | |
| 55 | WAE | 384.93 | 619.16 | 10.00 | 10 | | | 66.62 | 0.00 | 384.93 | 619.16 | 0.00 | | | |
| 56 | WAE | 316.33 | 745.95 | 10.00 | 10 | | | 65.00 | 0.00 | 316.33 | 745.95 | 0.00 | | | |

| Surface Schedule | | Reflection | | Normal | | Area(ft ²) | |
|------------------|-------|------------|------|--------|-------|------------------------|----------|
| Name | Color | Front | Back | X | Y | Z | |
| Bottom | 0% | 0% | 0% | 0.00 | 0.00 | 1.00 | 18710.80 |
| Side 1 | 0% | 0% | 0% | -0.82 | -0.45 | 0.00 | 9.99 |
| Side 2 | 0% | 0% | 0% | -0.41 | 0.91 | 0.00 | 987.18 |
| Side 3 | 0% | 0% | 0% | -0.92 | -0.39 | 0.00 | 132.44 |
| Side 4 | 0% | 0% | 0% | -0.91 | -0.42 | 0.00 | 970.56 |
| Side 5 | 0% | 0% | 0% | 0.42 | -0.91 | 0.00 | 637.32 |
| Side 6 | 0% | 0% | 0% | -0.91 | -0.41 | 0.00 | 4093.33 |
| Side 7 | 0% | 0% | 0% | -0.41 | 0.91 | 0.00 | 2897.30 |
| Side 8 | 0% | 0% | 0% | 0.91 | 0.41 | 0.00 | 184.13 |
| Side 9 | 0% | 0% | 0% | 0.42 | -0.91 | 0.00 | 111.13 |
| Side 10 | 0% | 0% | 0% | 0.91 | 0.41 | 0.00 | 918.68 |
| Side 11 | 0% | 0% | 0% | 0.91 | 0.41 | 0.00 | 184.13 |
| Side 12 | 0% | 0% | 0% | 0.41 | 0.91 | 0.00 | 1164.91 |
| Side 13 | 0% | 0% | 0% | 0.91 | 0.41 | 0.00 | 3185.91 |
| Side 14 | 0% | 0% | 0% | 0.41 | -0.91 | 0.00 | 1143.60 |
| Side 15 | 0% | 0% | 0% | 0.91 | 0.41 | 0.00 | 444.16 |
| Side 16 | 0% | 0% | 0% | 0.41 | 0.91 | 0.00 | 126.30 |
| Side 17 | 0% | 0% | 0% | -0.90 | -0.44 | 0.00 | 130.55 |
| Side 18 | 0% | 0% | 0% | 0.42 | -0.91 | 0.00 | 380.48 |
| Side 19 | 0% | 0% | 0% | 0.91 | 0.42 | 0.00 | 123.18 |
| Side 20 | 0% | 0% | 0% | 0.41 | -0.90 | 0.00 | 38.64 |
| Side 21 | 0% | 0% | 0% | -0.91 | -0.41 | 0.00 | 460.84 |
| Side 22 | 0% | 0% | 0% | 0.40 | -0.92 | 0.00 | 222.42 |
| Side 23 | 0% | 0% | 0% | -0.91 | -0.41 | 0.00 | 2833.69 |
| Side 24 | 0% | 0% | 0% | 0.41 | -0.91 | 0.00 | 94.55 |
| Side 25 | 0% | 0% | 0% | -0.90 | -0.44 | 0.00 | 227.34 |
| Side 26 | 0% | 0% | 0% | -0.83 | -0.56 | 0.00 | 5.41 |
| Top | 0% | 0% | 0% | 0.00 | 0.00 | 1.00 | 18710.80 |

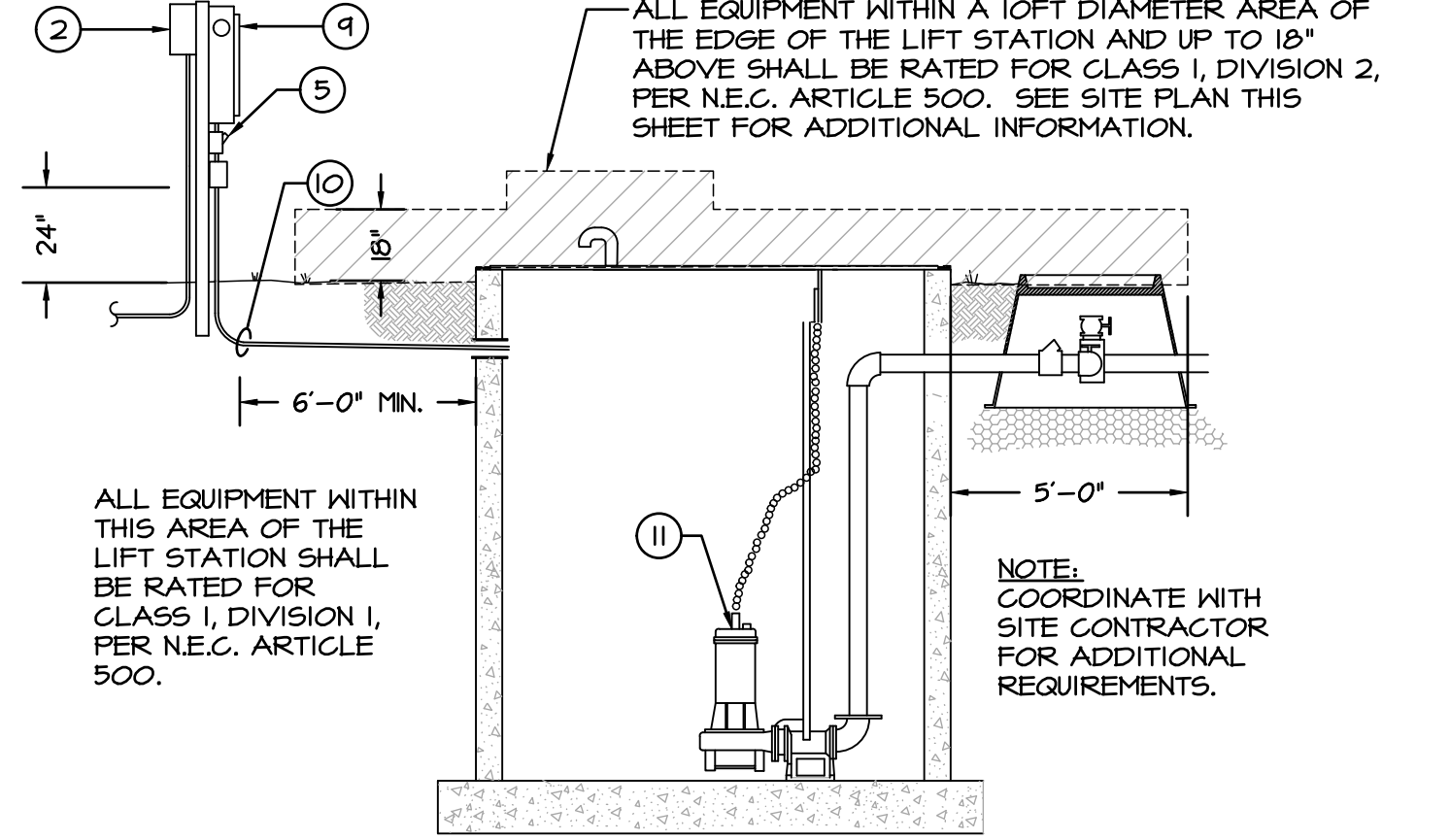
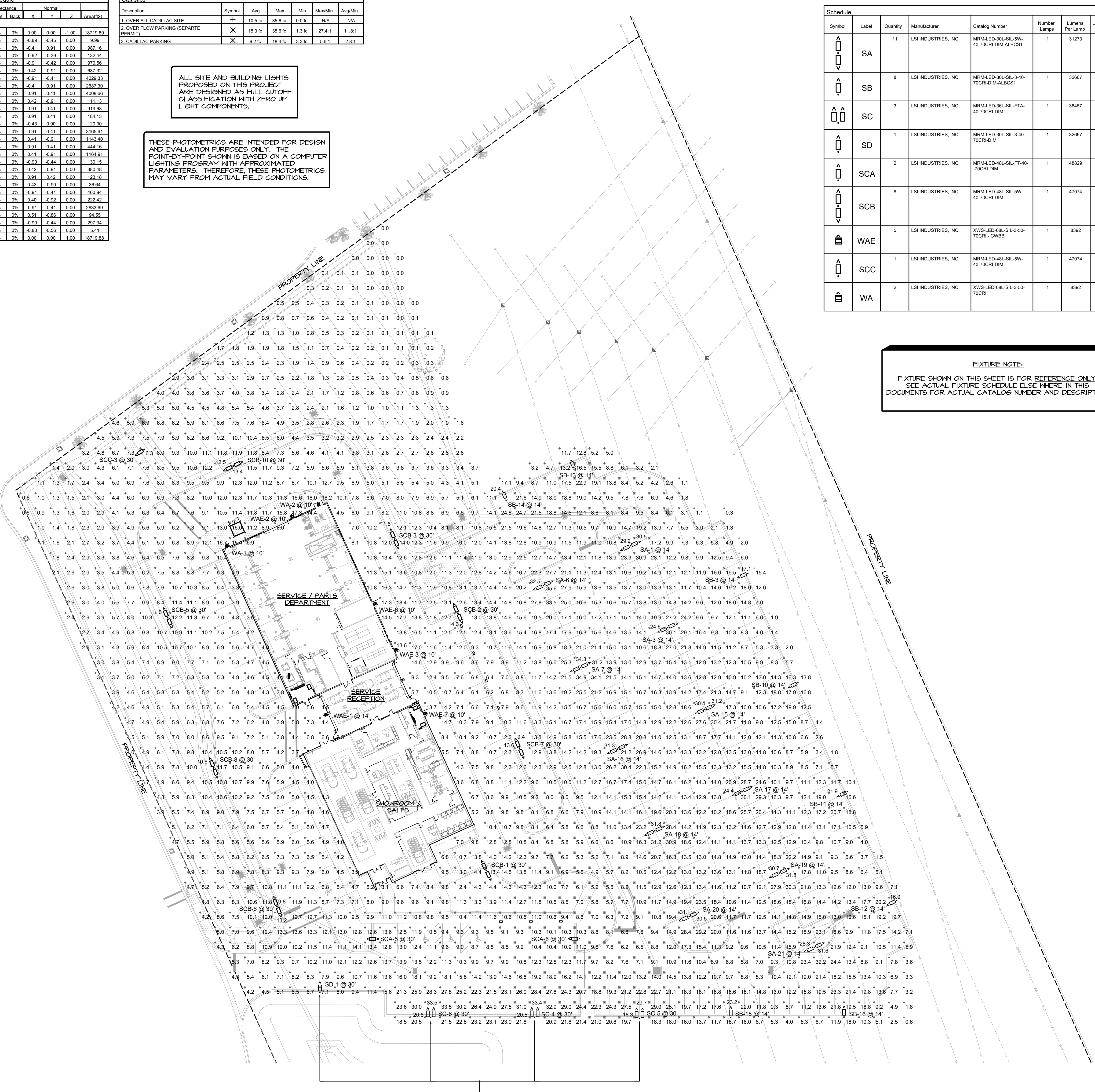
| Statistics | | Symbol | | Avg. | | Max | | Min | | Max/Min | | Avg/Min | |
|--|------|--------|-------|------|-------|-------|---------|---------|------|---------|------|---------|---------|
| Description | Area | Symbol | Area | Avg | Max | Min | Max/Min | Avg/Min | Area | Symbol | Area | Avg | Max/Min |
| 1. OVER ALL CADILLAC SITE | ± | 10.5% | 35.6% | 0.0% | N/A | N/A | | | | | | | |
| 2. OVER FLOW PARKING (SEPARATE PERMIT) | ± | 15.3% | 35.6% | 1.3% | 27.41 | 11.81 | | | | | | | |
| 3. CADILLAC PARKING | ± | 9.2% | 18.4% | 3.3% | 5.61 | 2.81 | | | | | | | |

ALL SITE AND BUILDING LIGHTS PROPOSED ON THIS PROJECT ARE DESIGNED AS FULL CUTOFF LIGHT COMPONENTS.

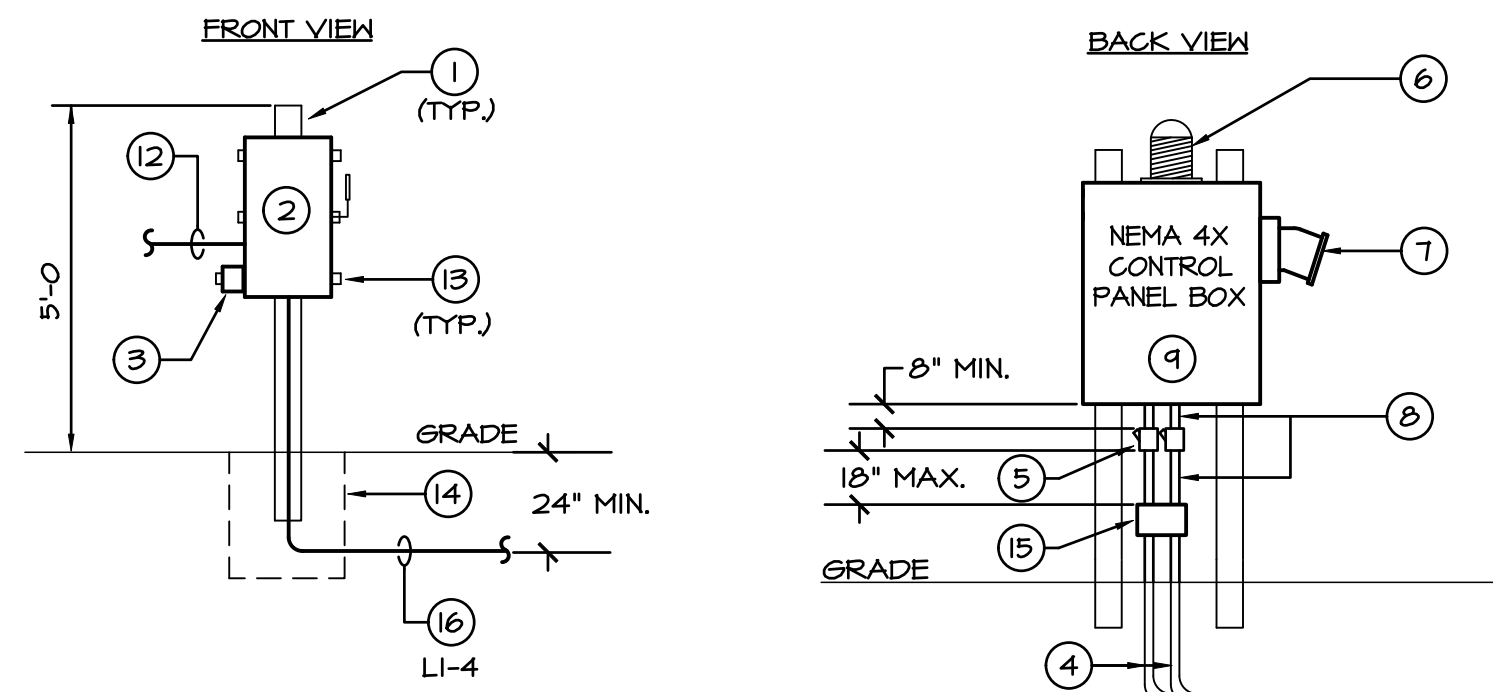
THESE PHOTOMETRICS ARE INTENDED FOR DESIGN AND EVALUATION PURPOSES ONLY. THE POINT-BY-POINT SHOWN IS BASED ON A COMPUTER LIGHTING PROGRAM WITH APPROXIMATED PARAMETERS. THEREFORE, THESE PHOTOMETRICS MAY VARY FROM ACTUAL FIELD CONDITIONS.

| Symbol | Label | Quantity | Manufacturer | Catalog Number | Number Lamps | Lumens Per Lamp | Light Loss Factor | Wattage |
|--------|-------|----------|----------------------|---------------------------------------|--------------|-----------------|-------------------|---------|
| SA | SA | 11 | LSI INDUSTRIES, INC. | MRLA-LED-30L-SL-50-40-70CR-DIM-ALBCS1 | 1 | 31273 | 1 | 464 |
| SB | SB | 8 | LSI INDUSTRIES, INC. | MRLA-LED-30L-SL-3-40-70CR-DIM-ALBCS1 | 1 | 32667 | 1 | 232 |
| SC | SC | 3 | LSI INDUSTRIES, INC. | MRLA-LED-30L-SL-FTA-40-70CR-DIM | 1 | 35457 | 1 | 576 |
| SD | SD | 1 | LSI INDUSTRIES, INC. | MRLA-LED-30L-SL-3-40-70CR-DIM | 1 | 32667 | 1 | 232 |
| SCA | SCA | 2 | LSI INDUSTRIES, INC. | MRLA-LED-48L-SL-FT-40-70CR-DIM | 1 | 48626 | 1 | 401 |
| SCB | SCB | 8 | LSI INDUSTRIES, INC. | MRLA-LED-48L-SL-50-40-70CR-DIM | 1 | 47074 | 1 | 802 |
| WAE | WAE | 5 | LSI INDUSTRIES, INC. | XWS-LED-08L-SL-3-50-70CR-C-1888 | 1 | 8392 | 1 | 61 |
| SCC | SCC | 1 | LSI INDUSTRIES, INC. | MRLA-LED-48L-SL-50-40-70CR-DIM | 1 | 47074 | 1 | 401 |
| WA | WA | 2 | LSI INDUSTRIES, INC. | XWS-LED-08L-SL-3-50-70CR-C | 1 | 8392 | 1 | 61 |

FIXTURE NOTE:
FIXTURE SHOWN ON THIS SHEET IS FOR REFERENCE ONLY. SEE ACTUAL FIXTURE SCHEDULE ELSE WHERE IN THIS DOCUMENTS FOR ACTUAL CATALOG NUMBER AND DESCRIPTION.



LIFT STATION ELECTRICAL DETAIL
NO SCALE



DISCONNECT ELEVATION
NO SCALE

CONTROL PANEL ELEVATION
NO SCALE

- NOTES**
1. 6"x6"x10'-0" CONCRETE POST BURIED 5'-0" IN GROUND.
 2. 60/240 D.E. RK-5 FUSES, 240V., WEATHER PROOF (NFR), WIRED AS 120V. PROVIDE CLASS 'R' REJECTION CLIPS.
 3. PROVIDE TRANSIENT VOLTAGE SURGE SUPPRESSOR (TVSS) ON THE LOAD SIDE OF THE DISCONNECT, 120V., 1-PHASE.
 4. (2) 2" CONDUITS PER N.E.C. SECTION 901.0 "WIRING METHODS" WITH BELL ENDS AT NET WELL.
 5. SEAL-OFF FITTING FOR EACH CONDUIT. WITHIN 18" OF ELECTRICAL ENCLOSURE.
 6. OVERFLOW ALARM LIGHT BY PUMP SUPPLIER. LOCATE VISIBLE FROM STREET.
 7. EMERGENCY GENERATOR RECEPTACLE BY PUMP SUPPLIER.
 8. GALVANIZED RIGID CONDUITS WITH SEAL OFF FITTINGS BY CONTRACTOR.
 9. CONTROL PANEL BY PUMP SUPPLIER, REFER TO ELECTRICAL ELEVATION.
 10. CONDUIT STUBS INTO NET WELL BY ELECTRICAL CONTRACTOR.
 11. (2) MOTORS (1 hp E.A.) (120V., 1-PHASE).
 12. 2-#6 CU., 1-#6 E.G. IN 1-1/4" CONDUIT TO PUMP CONTROL PANEL. (BACK TO BACK WITH DISCONNECT).
 13. 1-5/8"x1-5/8" ALUMINUM CHANNEL (LENGTH AND HOLE PATTERN AS REQUIRED). ALL FASTENERS AND ACCESSORIES SHALL BE CORROSION RESISTANT WITH MINIMUM 1/2" THREAD SIZE.
 14. PROVIDE ADDITIONAL CONCRETE POUR AS REQUIRED.
 15. NEMA 4X, 24"x6"x8"x4" JBOX, WITH TERMINAL STRIPS, AND BACK PLATE.
 16. 2-#3, 1-#3 E.G. IN 1-1/4" CONDUIT.

- NOTES:**
1. CONTRACTOR SHALL VERIFY ALL RESPONSIBILITIES, WIRING DETAIL, ETC. WITH PUMP SUPPLIER/INSTALLER PRIOR TO ROUGH-IN AND PROVIDE ACCORDINGLY.
 2. CONTRACTOR SHALL VERIFY PUMP VOLTAGE TO BE 120V., 1-PHASE. REPORT ANY DISCREPANCIES TO ARCHITECT FOR DIRECTIVES PRIOR TO COMMENCING WORK.
 3. THE HORIZONTAL DISTANCE FROM FACE OF CONTROL PANEL TO EDGE OF NET WELL SHALL BE A MINIMUM OF 6'-0".
 4. THE PEDESTAL CONTROL PANEL AND RELATED COMPONENTS SHALL NOT BE PAINTED.

PHOTOMETRIC SITE PLAN
SCALE: 1" = 30'-0"

CHEHAYEY & ASSOCIATES, INC.
CONSULTING PROFESSIONAL ENGINEERS
3702 AZEELI ST. TAMPA, FL 33609 (813) 878-1415 (fax) 878-0918
LIC. #49521 SOUHEIL CHEHAYEB CERT. #7340

architecture design planning

HARTMANN architecture inc.
4427 W. Kennedy Blvd. Suite 250
Tampa, Florida 33609
813.251.2190
AR09622

Project Name

MIKE ERDMAN CADILLAC
4750 Highway 520
Cocoa, FL 32926

Sheet Title

PHOTOMETRIC SITE PLAN

Revisions

State Registration
Souheil Chehayeb, P.E.
FL Lic. No. 49521

Project Number
22026

Drawn By
RR

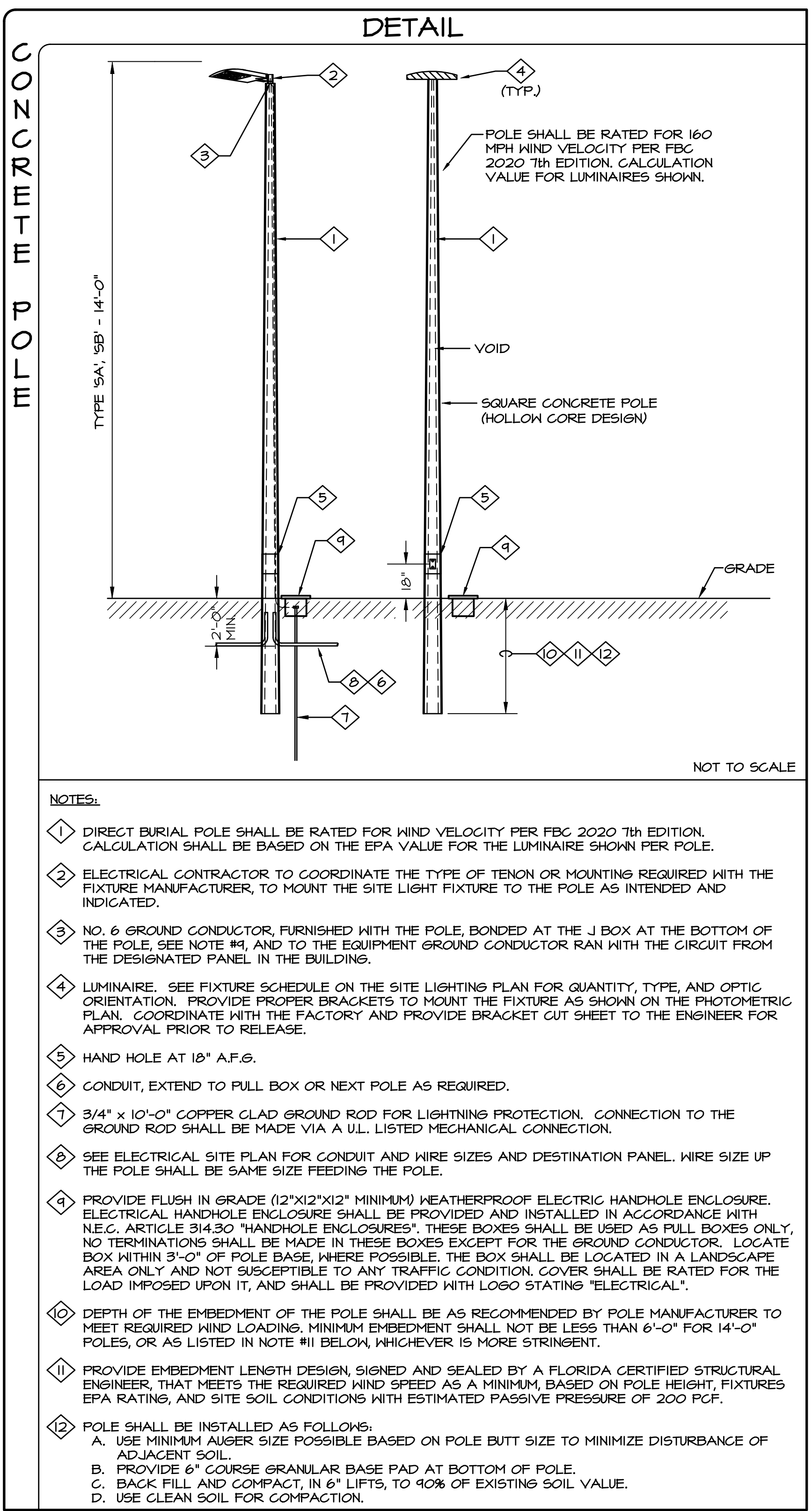
Checked By
SC

Issue Date
02.09.24

Sheet Number

E003

To the best of the knowledge of the architects & engineers, and their consultants and subcontractors, the information herein complies with the applicable building codes and regulations.



NOTES:
 1. DIRECT BURIAL POLE SHALL BE RATED FOR WIND VELOCITY PER FCC 2020 7th EDITION, CALCULATION SHALL BE BASED ON THE EPA VALUE FOR THE LUMINAIRE SHOWN PER POLE.
 2. ELECTRICAL CONTRACTOR TO COORDINATE THE TYPE OF TENON OR MOUNTING REQUIRED WITH THE FIXTURE MANUFACTURER, TO MOUNT THE SITE LIGHT FIXTURE TO THE POLE AS INTENDED AND INDICATED.
 3. NO. 6 GROUND CONDUCTOR, FURNISHED WITH THE POLE, BONDED AT THE J BOX AT THE BOTTOM OF THE POLE, SEE NOTE #4, AND TO THE EQUIPMENT GROUND CONDUCTOR RAN WITH THE CIRCUIT FROM THE DESIGNATED PANEL IN THE BUILDING.
 4. LUMINAIRE: SEE FIXTURE SCHEDULE ON THE SITE LIGHTING PLAN FOR QUANTITY, TYPE, AND OPTIC ORIENTATION. PROVIDE PROPER BRACKETS TO MOUNT THE FIXTURE AS SHOWN ON THE PHOTOMETRIC PLAN. COORDINATE WITH THE FACTORY AND PROVIDE BRACKET CUT SHEET TO THE ENGINEER FOR APPROVAL PRIOR TO RELEASE.
 5. HAND HOLE AT 18" A.F.S.
 6. CONDUIT, EXTEND TO PULL BOX OR NEXT POLE AS REQUIRED.
 7. 3/4" x 10'-0" COPPER CLAD GROUND ROD FOR LIGHTNING PROTECTION. CONNECTION TO THE GROUND ROD SHALL BE MADE VIA A U.L. LISTED MECHANICAL CONNECTION.
 8. SEE ELECTRICAL SITE PLAN FOR CONDUIT AND WIRE SIZES AND DESTINATION PANEL. WIRE SIZE UP THE POLE SHALL BE SAME SIZE FEEDING THE POLE.
 9. PROVIDE FLUSH IN GRADE (12"x12"x12" MINIMUM) WEATHERPROOF ELECTRIC HANDHOLE ENCLOSURE. ELECTRICAL HANDHOLE ENCLOSURE SHALL BE PROVIDED AND INSTALLED IN ACCORDANCE WITH N.E.C. ARTICLE 314.30 "HANDHOLE ENCLOSURES". THESE BOXES SHALL BE USED AS PULL BOXES ONLY. NO TERMINATIONS SHALL BE MADE IN THESE BOXES EXCEPT FOR THE GROUND CONDUCTOR. LOCATE BOX WITHIN 3'-0" OF POLE BASE, WHERE POSSIBLE, THE BOX SHALL BE LOCATED IN A LANDSCAPE AREA ONLY AND NOT SUSCEPTIBLE TO ANY TRAFFIC CONDITION. COVER SHALL BE RATED FOR THE LOAD IMPOSED UPON IT, AND SHALL BE PROVIDED WITH LOGO STATING "ELECTRICAL".
 10. DEPTH OF THE EMBEDMENT OF THE POLE SHALL BE AS RECOMMENDED BY POLE MANUFACTURER TO MEET REQUIRED MINIMUM EMBEDMENT SHALL NOT BE LESS THAN 6'-0" FOR 14'-0" POLES, OR AS LISTED IN NOTE #11 BELOW, WHICHEVER IS MORE STRINGENT.
 11. PROVIDE EMBEDMENT LENGTH DESIGN, SIGNED AND SEALED BY A FLORIDA CERTIFIED STRUCTURAL ENGINEER, THAT MEETS THE REQUIRED WIND SPEED AS A MINIMUM BASED ON POLE HEIGHT, FIXTURES, EPA RATINGS, AND SITE SOIL CONDITIONS WITH ESTIMATED PASSIVE PRESSURE OF 200 PCF.
 12. POLE SHALL BE INSTALLED AS FOLLOWS:
 A. USE MINIMUM AUGER SIZE POSSIBLE BASED ON POLE BUTT SIZE TO MINIMIZE DISTURBANCE OF ADJACENT SOIL.
 B. PROVIDE 6" COURSE GRANULAR BASE PAD AT BOTTOM OF POLE.
 C. BACK FILL AND COMPACT IN 6" LIFTS, TO 10% OF EXISTING SOIL VALUE.
 D. USE CLEAN SOIL FOR COMPACTION.

Mirada Medium (MRM) Outdoor LED Area Light
 Catalog # MRM-LED-36L-5L-5W-LV-40-70CRI-04M-ALBCS1
 Prepared By: MRM Date: Type: SA

OVERVIEW
 Lumen Package 7000 - 48,000
 Voltage Range 48 - 401
 Efficiency Range (LPW) 97 - 160
 Weight (Shipping) 30 (3.6)

QUICK LINKS
 Ordering Guide Performance Photometrics Dimensions

FEATURES & SPECIFICATIONS
Construction
 • Rugged die-cast aluminum housing contains factory prewired driver and optical lens. Cast aluminum wiring access door located underneath.
 • Designed to mount to square or round poles.
 • Fixtures are finished with LSI's DuraGrip™ polyester powder coat finishing process. The DuraGrip finish withstands extreme weather changes without cracking or peeling. Other standard LSI finishes available. Consult factory.
 • Shipping weight: 27 lbs in carton.
Optical System
 • Available in 5000K, 4000K, and 3000K color temperatures per ANSI C78.373. Also available in Integrated Glazed to provide IP66 rated sealed optical chamber in 1 component.
 • Proprietary silicone refractor optics provide exceptional coverage and uniformity inIES Type 2, 3, 5W, FT, FTA and AM.
 • Silicone optical material does not yellow or crack with age and provides a typical light transmission of 95%.
 • Zero uplight.
 • Available in 5000K, 4000K, and 3000K color temperatures per ANSI C78.373. Also available in Integrated Glazed to provide IP66 rated sealed optical chamber with Peak Intensity at 60°.
 • Minimum CRI of 70.
 • Integral baffle (LI) and house-side shield (HS) options available for improved backlight control without sacrificing street side performance. See page 9 for more details.
Electrical
 • High-performance programmable driver features over-voltage, under-voltage, short-circuit and over temperature protection. Custom lumen and wattage packages available.
 • 0-10V dimming (0% - 100%) standard.
 • Standard universal voltage (120-277 VAC) input 50/60 Hz or optional High Voltage (247-480 VAC).
 • L80 Calculated Life >100,000 Hours (See Lumen Maintenance on Page 5).
 • Total harmonic distortion <20%.
 • Operating temperature: -40°C to +50°C (-40°F to 122°F). 42 and 48L lumen packages rated to +40°C.
Installation
 • Designed to mount to square or round poles.
 • A single fastener secures the hinged door underneath the housing and provides quick & easy access to the electrical compartment.
 • Standard universal lock accepts up to 12 sq. w/in.
 • LSI's LSI's Traditional 3" drill pattern B3 for easy fastening of LSI products. (See drawing on page 9).
Warranty
 • LSI LED Fixtures carry a 5-year warranty.
Listings
 • Listed to UL 1598 and UL 8750.
 • Meets Buy American Act requirements.
 • IES compliant with 3000K color temperature selection.
 • Title 24 Compliant, see local ordinance for qualification information.
 • Suitable for wet locations.
 • IP66 rated luminaire per IEC 60598.
 • 50 rated for ANSI C78.373 high vibration applications are qualified.
Controls
 • Optional integral passive infrared Bluetooth® motion and photocell sensor (see page 9 for more details).
 • Features operate independently and can be commissioned via iOS or Android. Configuration app.
 • LSI's "AduLink" wireless control system options reduce energy and maintenance costs while optimizing light quality. 24/7 (see page 9 for more details).
 • Specifications and dimensions subject to change without notice.

Page 2/8 Rev. 08/16/21
 (513) 372-3200 • ©2020 LSI Industries Inc. All Rights Reserved. Specifications subject to change without notice.
 SPEC-1048-A-049

Mirada Medium (MRM) Outdoor LED Area Light
 Catalog # MRM-LED-36L-5L-5W-LV-40-70CRI-04M-ALBCS1
 Prepared By: MRM Date: Type: SB & SD

OVERVIEW
 Lumen Package 7000 - 48,000
 Voltage Range 48 - 401
 Efficiency Range (LPW) 97 - 160
 Weight (Shipping) 30 (3.6)

QUICK LINKS
 Ordering Guide Performance Photometrics Dimensions

FEATURES & SPECIFICATIONS
Construction
 • Rugged die-cast aluminum housing contains factory prewired driver and optical lens. Cast aluminum wiring access door located underneath.
 • Designed to mount to square or round poles.
 • Fixtures are finished with LSI's DuraGrip™ polyester powder coat finishing process. The DuraGrip finish withstands extreme weather changes without cracking or peeling. Other standard LSI finishes available. Consult factory.
 • Shipping weight: 27 lbs in carton.
Optical System
 • Available in 5000K, 4000K, and 3000K color temperatures per ANSI C78.373. Also available in Integrated Glazed to provide IP66 rated sealed optical chamber in 1 component.
 • Proprietary silicone refractor optics provide exceptional coverage and uniformity inIES Type 2, 3, 5W, FT, FTA and AM.
 • Silicone optical material does not yellow or crack with age and provides a typical light transmission of 95%.
 • Zero uplight.
 • Available in 5000K, 4000K, and 3000K color temperatures per ANSI C78.373. Also available in Integrated Glazed to provide IP66 rated sealed optical chamber with Peak Intensity at 60°.
 • Minimum CRI of 70.
 • Integral baffle (LI) and house-side shield (HS) options available for improved backlight control without sacrificing street side performance. See page 9 for more details.
Electrical
 • High-performance programmable driver features over-voltage, under-voltage, short-circuit and over temperature protection. Custom lumen and wattage packages available.
 • 0-10V dimming (0% - 100%) standard.
 • Standard universal voltage (120-277 VAC) input 50/60 Hz or optional High Voltage (247-480 VAC).
 • L80 Calculated Life >100,000 Hours (See Lumen Maintenance on Page 5).
 • Total harmonic distortion <20%.
 • Operating temperature: -40°C to +50°C (-40°F to 122°F). 42 and 48L lumen packages rated to +40°C.
Installation
 • Designed to mount to square or round poles.
 • A single fastener secures the hinged door underneath the housing and provides quick & easy access to the electrical compartment.
 • Standard universal lock accepts up to 12 sq. w/in.
 • LSI's LSI's Traditional 3" drill pattern B3 for easy fastening of LSI products. (See drawing on page 9).
Warranty
 • LSI LED Fixtures carry a 5-year warranty.
Listings
 • Listed to UL 1598 and UL 8750.
 • Meets Buy American Act requirements.
 • IES compliant with 3000K color temperature selection.
 • Title 24 Compliant, see local ordinance for qualification information.
 • Suitable for wet locations.
 • IP66 rated luminaire per IEC 60598.
 • 50 rated for ANSI C78.373 high vibration applications are qualified.
Controls
 • Optional integral passive infrared Bluetooth® motion and photocell sensor (see page 9 for more details).
 • Features operate independently and can be commissioned via iOS or Android. Configuration app.
 • LSI's "AduLink" wireless control system options reduce energy and maintenance costs while optimizing light quality. 24/7 (see page 9 for more details).
 • Specifications and dimensions subject to change without notice.

Page 2/8 Rev. 08/16/21
 (513) 372-3200 • ©2020 LSI Industries Inc. All Rights Reserved. Specifications subject to change without notice.
 SPEC-1048-A-049

Mirada Medium (MRM) Outdoor LED Area Light
 Catalog # MRM-LED-36L-5L-5W-LV-40-70CRI-04M-ALBCS1
 Prepared By: MRM Date: Type: SC

OVERVIEW
 Lumen Package 7000 - 48,000
 Voltage Range 48 - 401
 Efficiency Range (LPW) 97 - 160
 Weight (Shipping) 30 (3.6)

QUICK LINKS
 Ordering Guide Performance Photometrics Dimensions

FEATURES & SPECIFICATIONS
Construction
 • Rugged die-cast aluminum housing contains factory prewired driver and optical lens. Cast aluminum wiring access door located underneath.
 • Designed to mount to square or round poles.
 • Fixtures are finished with LSI's DuraGrip™ polyester powder coat finishing process. The DuraGrip finish withstands extreme weather changes without cracking or peeling. Other standard LSI finishes available. Consult factory.
 • Shipping weight: 27 lbs in carton.
Optical System
 • Available in 5000K, 4000K, and 3000K color temperatures per ANSI C78.373. Also available in Integrated Glazed to provide IP66 rated sealed optical chamber in 1 component.
 • Proprietary silicone refractor optics provide exceptional coverage and uniformity inIES Type 2, 3, 5W, FT, FTA and AM.
 • Silicone optical material does not yellow or crack with age and provides a typical light transmission of 95%.
 • Zero uplight.
 • Available in 5000K, 4000K, and 3000K color temperatures per ANSI C78.373. Also available in Integrated Glazed to provide IP66 rated sealed optical chamber with Peak Intensity at 60°.
 • Minimum CRI of 70.
 • Integral baffle (LI) and house-side shield (HS) options available for improved backlight control without sacrificing street side performance. See page 9 for more details.
Electrical
 • High-performance programmable driver features over-voltage, under-voltage, short-circuit and over temperature protection. Custom lumen and wattage packages available.
 • 0-10V dimming (0% - 100%) standard.
 • Standard universal voltage (120-277 VAC) input 50/60 Hz or optional High Voltage (247-480 VAC).
 • L80 Calculated Life >100,000 Hours (See Lumen Maintenance on Page 5).
 • Total harmonic distortion <20%.
 • Operating temperature: -40°C to +50°C (-40°F to 122°F). 42 and 48L lumen packages rated to +40°C.
Installation
 • Designed to mount to square or round poles.
 • A single fastener secures the hinged door underneath the housing and provides quick & easy access to the electrical compartment.
 • Standard universal lock accepts up to 12 sq. w/in.
 • LSI's LSI's Traditional 3" drill pattern B3 for easy fastening of LSI products. (See drawing on page 9).
Warranty
 • LSI LED Fixtures carry a 5-year warranty.
Listings
 • Listed to UL 1598 and UL 8750.
 • Meets Buy American Act requirements.
 • IES compliant with 3000K color temperature selection.
 • Title 24 Compliant, see local ordinance for qualification information.
 • Suitable for wet locations.
 • IP66 rated luminaire per IEC 60598.
 • 50 rated for ANSI C78.373 high vibration applications are qualified.
Controls
 • Optional integral passive infrared Bluetooth® motion and photocell sensor (see page 9 for more details).
 • Features operate independently and can be commissioned via iOS or Android. Configuration app.
 • LSI's "AduLink" wireless control system options reduce energy and maintenance costs while optimizing light quality. 24/7 (see page 9 for more details).
 • Specifications and dimensions subject to change without notice.

Page 2/8 Rev. 08/16/21
 (513) 372-3200 • ©2020 LSI Industries Inc. All Rights Reserved. Specifications subject to change without notice.
 SPEC-1048-A-049

architecture design planning

HARTMANN architecture inc.

4427 W. Kennedy Blvd.
 Suite 250
 Tampa, Florida 33609
 813.251.2190
 AR09622

Project Name

MIKE ERDMAN CADILLAC
 4750 Highway 520
 Cocoa, FL 32926

Sheet Title

FIXTURE INFORMATION

Revisions

State Registration
 Souheil Chehayeb, P.E.
 FL Lic. No. 49521

Project Number
 22026

Drawn By
 RR

Checked By
 SC

Issue Date
 02.09.24

Sheet Number

E005

To the best of the knowledge of the architects & engineers, and their professional consultants, the applicable building codes are:

Project Number
 22026

Drawn By
 RR

Checked By
 SC

Issue Date
 02.09.24

Sheet Number

E005

To the best of the knowledge of the architects & engineers, and their professional consultants, the applicable building codes are:

FIXTURE NOTE
 FIXTURE SHOWN ON THIS SHEET IS FOR REFERENCE ONLY. SEE ACTUAL FIXTURE SCHEDULE ELSE WHERE IN THIS DOCUMENTS FOR ACTUAL CATALOG NUMBER AND DESCRIPTION.

CHEHAYEB & ASSOCIATES, INC.
 CONSULTING PROFESSIONAL ENGINEERS

3702 AZEEL ST.
 TAMPA, FL 33609

(813) 876-1415
 (fax) 876-0918

FLC #49521 SOUHEIL CHEHAYEB CERT. #7340